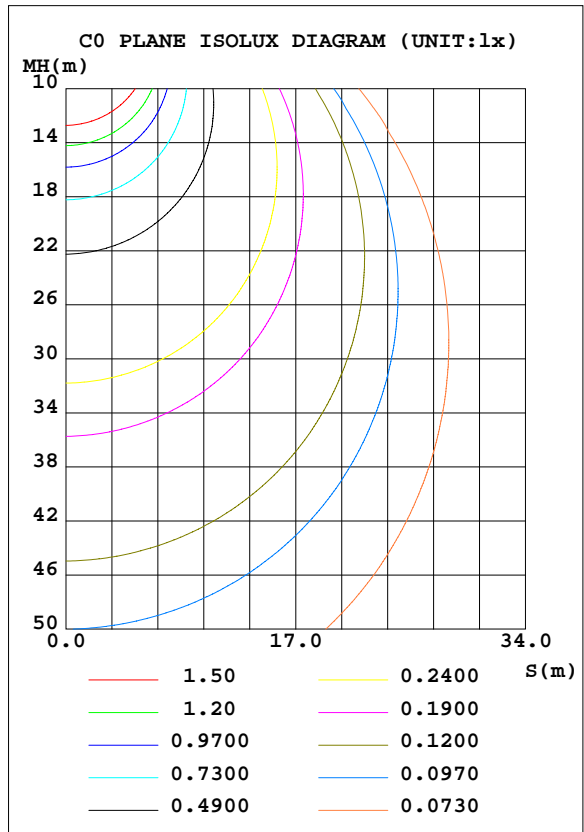
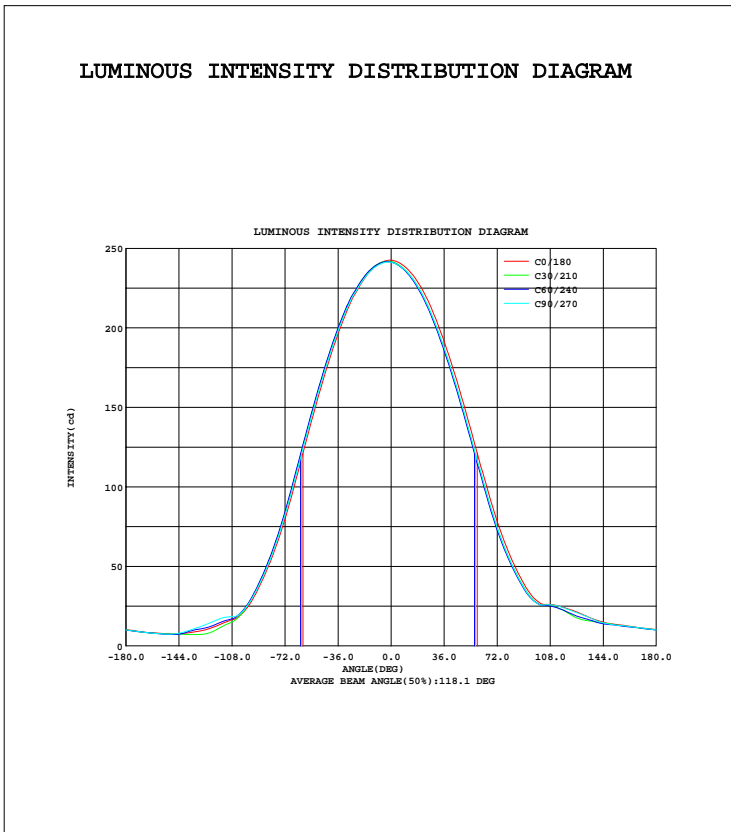




Test:U:120.5V I:0.1196A P:14.30W PF:0.9925 Lamp Flux:21.9782x33 lm		
NAME: 4313	TYPE:LED	WEIGHT:
SPEC.:4313	DIM.:	SERIAL No.:1
	SUR.:	PROTECTION ANGLE:

DATA OF LAMP		PHOTOMETRIC DATA Eff: 62.98 lm/W			
MODEL		I <sub>max</sub> (cd)	242.6	S/MH(C0/180)	1.29
NOMINAL POWER(W)	15	LOR(%)	124.2	S/MH(C90/270)	1.30
RATED VOLTAGE(V)	120	TOTAL FLUX(lm)	900.68	η UP, DN(C0-180)	9.2,53.4
NOMINAL FLUX(lm)	21.9782	CIE CLASS	SEMI-D.	η UP, DN(C180-360)	6.5,55.1
LAMPS INSIDE	33	η up(%)	15.7	CIBSE SHR NOM	1.25
TEST VOLTAGE(V)	120.6	η down(%)	108.5	CIBSE SHR MAX	1.35



C Range: 0 - 360DEG  
 C Interval: 15.0DEG  
 Test Speed: HIGH  
 Temperature:25.3DEG  
 Operators:DAMIN  
 Test Date:2014-12-17

γ Range: 0 - 180DEG  
 γ Interval: 1.0DEG  
 Test System:EVERFINE GO-2000B\_V1 SYSTEM V2.0.291  
 Humidity:65.0%  
 Test Distance:7.400m [K=1.0000]  
 Remarks:

## ZONAL FLUX DIAGRAM

## ZONAL FLUX DIAGRAM:

$\gamma$	C0	C45	C90	C135	C180	C225	C270	C315	$\gamma$	$\Phi$ zone	$\Phi$ total	$\Phi$ lum,lamp
10	238.0	235.8	235.8	237.2	239.2	239.5	238.7	236.9	0- 10	22.85	22.85	2.54,3.15
20	226.1	222.8	223.0	226.1	228.3	229.7	228.7	225.3	10- 20	65.70	88.56	9.83,12.2
30	206.4	202.9	202.7	208.2	210.6	212.2	212.0	206.1	20- 30	100.4	189.0	21,26.1
40	180.5	176.3	176.3	183.1	185.4	187.9	187.5	180.5	30- 40	122.3	311.3	34.6,42.9
50	149.7	145.1	145.3	153.0	154.7	158.0	157.3	149.6	40- 50	129.1	440.4	48.9,60.7
60	116.0	111.4	112.0	119.7	120.5	124.2	123.4	115.2	50- 60	120.6	560.9	62.3,77.3
70	84.27	79.46	80.22	86.74	86.11	90.28	88.68	82.15	60- 70	100.1	661.0	73.4,91.1
80	58.49	54.93	55.29	60.30	57.73	60.84	59.47	54.89	70- 80	74.52	735.5	81.7,101
90	39.39	36.88	36.78	40.49	36.26	38.46	37.63	34.12	80- 90	51.39	786.9	87.4,108
100	27.68	26.67	26.38	27.15	21.45	22.28	22.46	20.65	90-100	32.88	819.8	91,113
110	25.87	25.21	25.75	23.00	15.78	15.59	18.28	17.21	100-110	23.10	842.9	93.6,116
120	23.32	21.27	22.98	18.80	11.98	11.72	15.62	12.86	110-120	18.73	861.6	95.7,119
130	19.80	16.31	19.51	15.51	9.352	8.108	11.94	8.176	120-130	13.68	875.3	97.2,121
140	16.05	14.64	15.70	15.30	8.034	7.473	8.909	7.237	130-140	9.840	885.1	98.3,122
150	13.82	13.56	13.42	14.06	7.615	7.427	7.386	7.445	140-150	6.926	892.0	99,123
160	12.66	12.21	12.39	12.63	8.114	7.876	7.829	7.970	150-160	4.800	896.8	99.6,124
170	11.35	11.10	11.28	11.37	8.981	8.802	8.861	9.035	160-170	2.869	899.7	99.9,124
180	10.29	10.01	10.05	10.31	10.32	10.00	10.06	10.32	170-180	0.9656	900.7	100,124
DEG	LUMINOUS INTENSITY:cd									UNIT:lm		

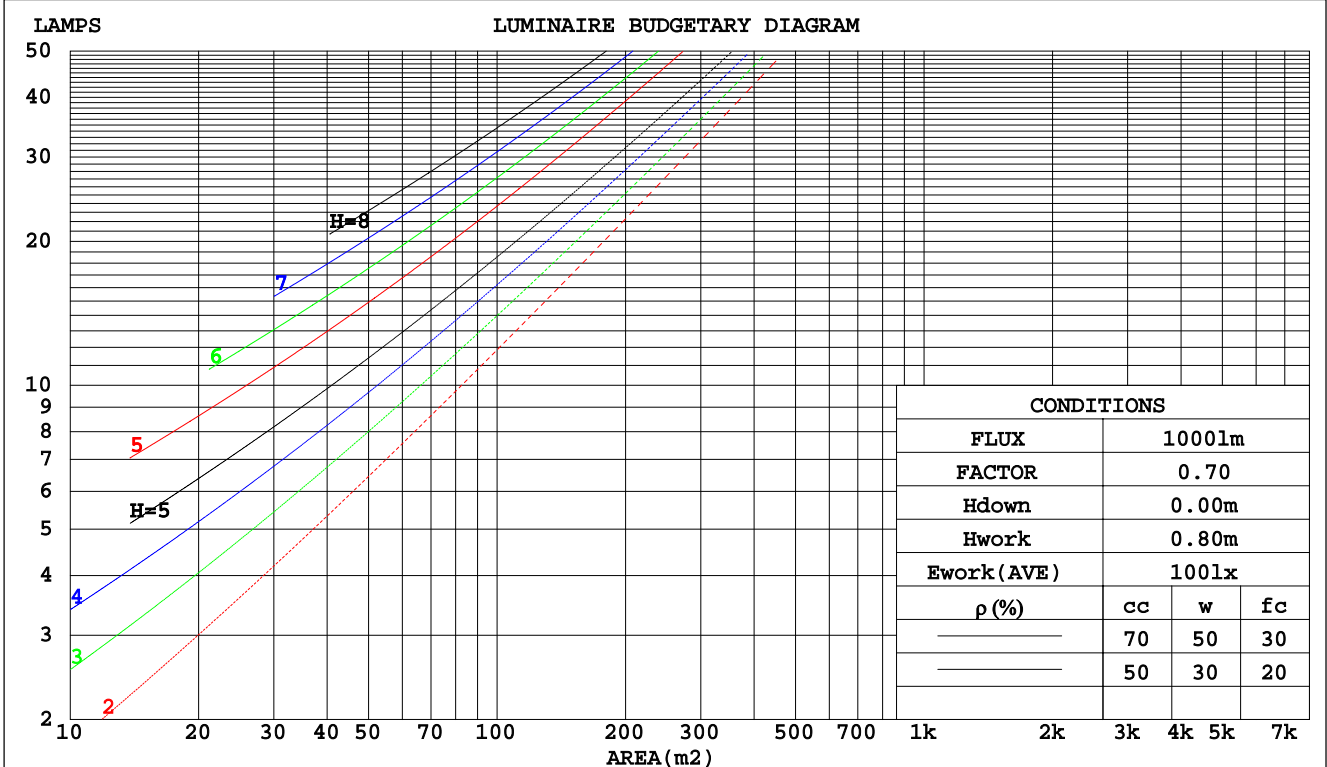
C Range: 0 - 360DEG  
 C Interval: 15.0DEG  
 Test Speed: HIGH  
 Temperature:25.3DEG  
 Operators:DAMIN  
 Test Date:2014-12-17

$\gamma$  Range: 0 - 180DEG  
 $\gamma$  Interval: 1.0DEG  
 Test System:EVERFINE GO-2000B\_V1 SYSTEM V2.0.291  
 Humidity:65.0%  
 Test Distance:7.400m [K=1.0000]  
 Remarks:

CU AND LUMINAIRE BUDGETARY ESTIMATE DIAGRAM

Test:U:120.5V I:0.1196A P:14.30W PF:0.9925 Lamp Flux:21.9782x33 lm		
NAME: 4313	TYPE:LED	WEIGHT:
SPEC.:4313	DIM.:	SERIAL No.:1
	SUR.:	PROTECTION ANGLE:

pcc	80%			70%			50%			30%			10%			0
	50%	30%	10%	50%	30%	10%	50%	30%	10%	50%	30%	10%	50%	30%	10%	0
pw																0
pfc	20%			20%			20%			20%			20%			0
RCR	RCR:Room Cavity Ratio      Coefficients of Utilization(CU)															
0.0	1.44	1.44	1.44	1.39	1.39	1.39	1.29	1.29	1.29	1.20	1.20	1.20	1.12	1.12	1.12	1.08
1.0	1.22	1.16	1.10	1.18	1.12	1.07	1.10	1.05	1.01	1.02	.98	.95	.95	.92	.89	.86
2.0	1.05	.96	.88	1.02	.93	.86	.95	.88	.82	.88	.82	.77	.82	.77	.73	.70
3.0	.92	.81	.73	.89	.79	.71	.83	.74	.68	.77	.70	.64	.72	.66	.61	.58
4.0	.81	.70	.61	.78	.68	.60	.73	.64	.57	.68	.61	.55	.64	.58	.52	.49
5.0	.72	.61	.52	.70	.59	.51	.65	.56	.49	.61	.53	.47	.57	.51	.45	.42
6.0	.65	.53	.45	.63	.52	.44	.59	.50	.43	.55	.47	.41	.52	.45	.40	.37
7.0	.59	.47	.40	.57	.46	.39	.53	.44	.38	.50	.42	.36	.47	.40	.35	.32
8.0	.53	.43	.35	.52	.42	.35	.49	.40	.33	.46	.38	.32	.43	.36	.31	.29
9.0	.49	.38	.32	.47	.38	.31	.45	.36	.30	.42	.35	.29	.40	.33	.28	.26
10.0	.45	.35	.28	.44	.34	.28	.41	.33	.27	.39	.32	.26	.37	.30	.26	.23



C Range: 0 - 360DEG  
 C Interval: 15.0DEG  
 Test Speed: HIGH  
 Temperature: 25.3DEG  
 Operators: DAMIN  
 Test Date: 2014-12-17

γ Range: 0 - 180DEG  
 γ Interval: 1.0DEG  
 Test System: EVERFINE GO-2000B\_V1 SYSTEM V2.0.291  
 Humidity: 65.0%  
 Test Distance: 7.400m [K=1.0000]  
 Remarks:

WEC AND CCEC

Test:U:120.5V I:0.1196A P:14.30W PF:0.9925 Lamp Flux:21.9782x33 lm		
NAME: 4313	TYPE:LED	WEIGHT:
SPEC.:4313	DIM.:	SERIAL No.:1
	SUR.:	PROTECTION ANGLE:

ρcc	80%			70%			50%			30%			10%			0
ρw	50%	30%	10%	50%	30%	10%	50%	30%	10%	50%	30%	10%	50%	30%	10%	0
ρfc	20%			20%			20%			20%			20%			0
RCR	RCR:Room Cavity Ratio						Wall Exitance Coefficients(WEC)									
0.0																
1.0	.444	.252	.080	.430	.245	.078	.404	.232	.074	.381	.220	.071	.359	.208	.067	
2.0	.393	.215	.066	.381	.210	.065	.358	.199	.062	.337	.189	.059	.317	.179	.057	
3.0	.354	.188	.056	.343	.184	.055	.322	.174	.053	.303	.166	.051	.285	.158	.049	
4.0	.321	.167	.049	.311	.163	.048	.292	.155	.046	.275	.148	.045	.259	.141	.043	
5.0	.294	.150	.043	.285	.146	.043	.268	.139	.041	.252	.133	.040	.237	.127	.038	
6.0	.270	.135	.039	.262	.132	.038	.247	.126	.037	.232	.121	.035	.219	.115	.034	
7.0	.250	.124	.035	.243	.121	.034	.229	.116	.033	.216	.111	.032	.203	.106	.031	
8.0	.233	.114	.032	.226	.111	.031	.213	.106	.030	.201	.102	.029	.190	.097	.028	
9.0	.217	.105	.029	.211	.103	.029	.199	.099	.028	.188	.094	.027	.178	.090	.026	
10.0	.204	.098	.027	.198	.096	.027	.187	.092	.026	.177	.088	.025	.167	.084	.024	

ρcc	80%			70%			50%			30%			10%			0
ρw	50%	30%	10%	50%	30%	10%	50%	30%	10%	50%	30%	10%	50%	30%	10%	0
ρfc	20%			20%			20%			20%			20%			0
RCR	RCR:Room Cavity Ratio						Ceiling Cavity Exitance Coefficients(CCEC)									
0.0	.356	.356	.356	.304	.304	.304	.208	.208	.208	.119	.119	.119	.038	.038	.038	
1.0	.349	.314	.283	.298	.269	.243	.204	.185	.168	.117	.107	.098	.038	.035	.032	
2.0	.339	.285	.239	.291	.245	.207	.199	.170	.144	.115	.099	.085	.037	.032	.028	
3.0	.330	.264	.212	.283	.228	.183	.194	.158	.129	.112	.092	.076	.036	.030	.025	
4.0	.320	.248	.193	.275	.214	.168	.189	.149	.118	.109	.088	.070	.035	.029	.023	
5.0	.311	.236	.180	.267	.204	.157	.184	.142	.111	.106	.084	.066	.034	.027	.022	
6.0	.302	.226	.171	.259	.195	.149	.179	.137	.105	.104	.080	.063	.033	.026	.021	
7.0	.293	.217	.164	.252	.188	.143	.174	.132	.102	.101	.078	.060	.033	.025	.020	
8.0	.285	.210	.159	.245	.182	.139	.170	.128	.098	.099	.076	.059	.032	.025	.019	
9.0	.277	.204	.155	.239	.177	.135	.165	.125	.096	.096	.074	.057	.031	.024	.019	
10.0	.270	.199	.152	.233	.173	.133	.161	.122	.094	.094	.072	.056	.031	.024	.019	

C Range: 0 - 360DEG  
 C Interval: 15.0DEG  
 Test Speed: HIGH  
 Temperature:25.3DEG  
 Operators:DAMIN  
 Test Date:2014-12-17

γ Range: 0 - 180DEG  
 γ Interval: 1.0DEG  
 Test System:EVERFINE GO-2000B\_V1 SYSTEM V2.0.291  
 Humidity:65.0%  
 Test Distance:7.400m [K=1.0000]  
 Remarks:

## UGR(Unified Glare Rating) Table

Test:U:120.5V I:0.1196A P:14.30W PF:0.9925 Lamp Flux:21.9782x33 lm										
NAME: 4313					TYPE:LED			WEIGHT:		
SPEC.:4313					DIM.:			SERIAL No.:1		
					SUR.:			PROTECTION ANGLE:		
ceiling/cavity	0.7	0.7	0.5	0.5	0.3	0.7	0.7	0.5	0.5	0.3
walls	0.5	0.3	0.5	0.3	0.3	0.5	0.3	0.5	0.3	0.3
working plane	0.2	0.2	0.2	0.2	0.2	0.2	0.2	0.2	0.2	0.2
Room dimensions	Viewed crosswise					Viewed endwise				
x = 2H y = 2H	14.8	16.2	15.2	16.6	17.1	14.6	16.0	15.1	16.5	16.9
3H	16.7	18.0	17.1	18.4	18.9	16.5	17.8	16.9	18.2	18.7
4H	17.7	18.9	18.1	19.4	19.9	17.4	18.6	17.9	19.1	19.6
6H	18.7	19.9	19.2	20.4	20.9	18.4	19.6	18.9	20.1	20.6
8H	19.3	20.4	19.8	20.9	21.5	19.0	20.1	19.5	20.6	21.2
12H	19.9	21.0	20.5	21.5	22.1	19.6	20.7	20.2	21.2	21.8
4H 2H	15.4	16.6	15.9	17.1	17.6	15.3	16.5	15.8	17.0	17.5
3H	17.5	18.6	18.0	19.1	19.6	17.3	18.4	17.8	18.9	19.5
4H	18.6	19.6	19.2	20.1	20.7	18.4	19.4	19.0	19.9	20.5
6H	19.9	20.8	20.5	21.3	22.0	19.6	20.5	20.2	21.1	21.7
8H	20.6	21.4	21.2	22.0	22.6	20.3	21.1	20.9	21.7	22.3
12H	21.4	22.1	22.0	22.7	23.4	21.1	21.8	21.7	22.4	23.1
8H 4H	19.0	19.8	19.6	20.4	21.1	18.8	19.7	19.4	20.3	20.9
6H	20.5	21.2	21.2	21.8	22.5	20.3	21.0	20.9	21.6	22.3
8H	21.4	22.0	22.0	22.7	23.4	21.2	21.8	21.8	22.4	23.1
12H	22.4	23.0	23.1	23.6	24.4	22.2	22.7	22.8	23.3	24.1
12H 4H	19.1	19.9	19.7	20.5	21.1	18.9	19.7	19.5	20.3	21.0
6H	20.7	21.3	21.3	22.0	22.7	20.5	21.1	21.2	21.8	22.5
8H	21.7	22.2	22.3	22.9	23.6	21.5	22.0	22.1	22.6	23.4
Variations with the observer position at spacings:										
S = 1.0H	+ 0.1 / - 0.1					+ 0.1 / - 0.1				
1.5H	+ 0.2 / - 0.3					+ 0.2 / - 0.3				
2.0H	+ 0.2 / - 0.3					+ 0.2 / - 0.3				

CIE Pub.117 Corrected 725.3 lm Total Lamp Luminous Flux. (8log(F/F0) = -1.1)

C Range: 0 - 360DEG  
 C Interval: 15.0DEG  
 Test Speed: HIGH  
 Temperature:25.3DEG  
 Operators:DAMIN  
 Test Date:2014-12-17

$\gamma$  Range: 0 - 180DEG  
 $\gamma$  Interval: 1.0DEG  
 Test System:EVERFINE GO-2000B\_V1 SYSTEM V2.0.291  
 Humidity:65.0%  
 Test Distance:7.400m [K=1.0000]  
 Remarks:

## UTILIZATION FACTORS TABLE

Test:U:120.5V I:0.1196A P:14.30W PF:0.9925 Lamp Flux:21.9782x33 lm		
NAME: 4313	TYPE:LED	WEIGHT:
SPEC.:4313	DIM.:	SERIAL No.:1
	SUR.:	PROTECTION ANGLE:

REFLECTANCE										
Ceiling	0.8	0.8	0.8	0.7	0.7	0.7	0.5	0.5	0.5	0
Walls	0.7	0.5	0.3	0.7	0.5	0.3	0.7	0.5	0.3	0
Working plane	0.2	0.2	0.2	0.2	0.2	0.2	0.2	0.2	0.2	0
ROOM INDEX	UTILIZATION FACTORS(PERCENT) $k(RI) \times RCR = 5$									
k = 0.60	64	49	40	62	48	40	60	47	39	31
0.80	76	60	50	74	59	50	71	58	49	40
1.00	85	70	60	83	69	60	79	70	58	48
1.25	94	79	69	91	78	69	87	75	67	56
1.50	100	86	76	97	84	75	92	81	73	61
2.00	109	96	87	106	94	85	99	90	82	69
2.50	114	103	94	111	100	92	104	95	88	74
3.00	119	108	100	115	105	98	107	100	93	79
4.00	124	115	108	120	112	105	112	106	100	84
5.00	128	120	113	123	116	110	115	109	105	88
ROOM INDEX	UF(total)									Direct
According to DIN EN 13032-2 2004			Suspended				SHRNOM = 1.25			

C Range: 0 - 360DEG  
 C Interval: 15.0DEG  
 Test Speed: HIGH  
 Temperature:25.3DEG  
 Operators:DAMIN  
 Test Date:2014-12-17

$\gamma$  Range: 0 - 180DEG  
 $\gamma$  Interval: 1.0DEG  
 Test System:EVERFINE GO-2000B\_V1 SYSTEM V2.0.291  
 Humidity:65.0%  
 Test Distance:7.400m [K=1.0000]  
 Remarks:

ISOCANDELA DIAGRAM

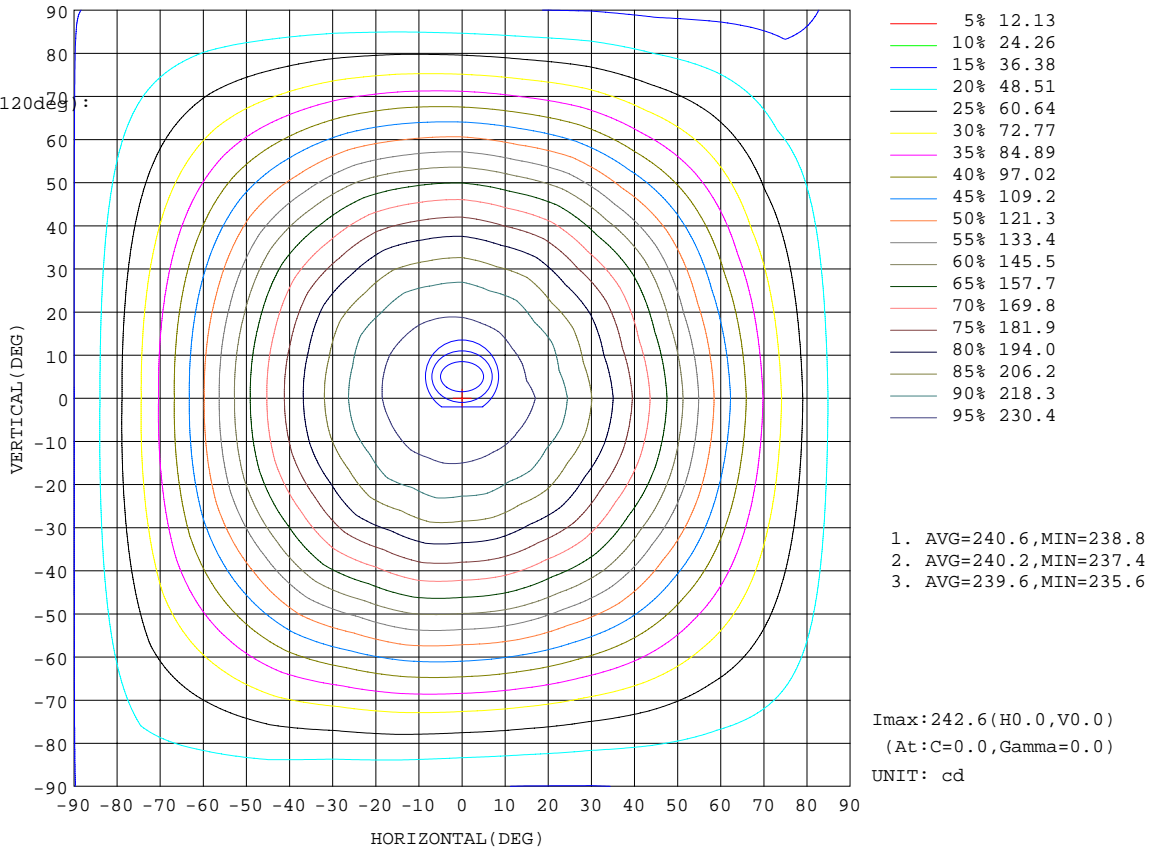
Test:U:120.5V I:0.1196A P:14.30W PF:0.9925 Lamp Flux:21.9782x33 lm		
NAME: 4313	TYPE:LED	WEIGHT:
SPEC.:4313	DIM.:	SERIAL No.:1
	SUR.:	PROTECTION ANGLE:

Conical surface Flux(90deg):

375.95 lm  
 %lum = 41.7%  
 %lamp = 51.8%

Conical surface Flux(120deg):

560.93 lm  
 %lum = 62.3%  
 %lamp = 77.3%

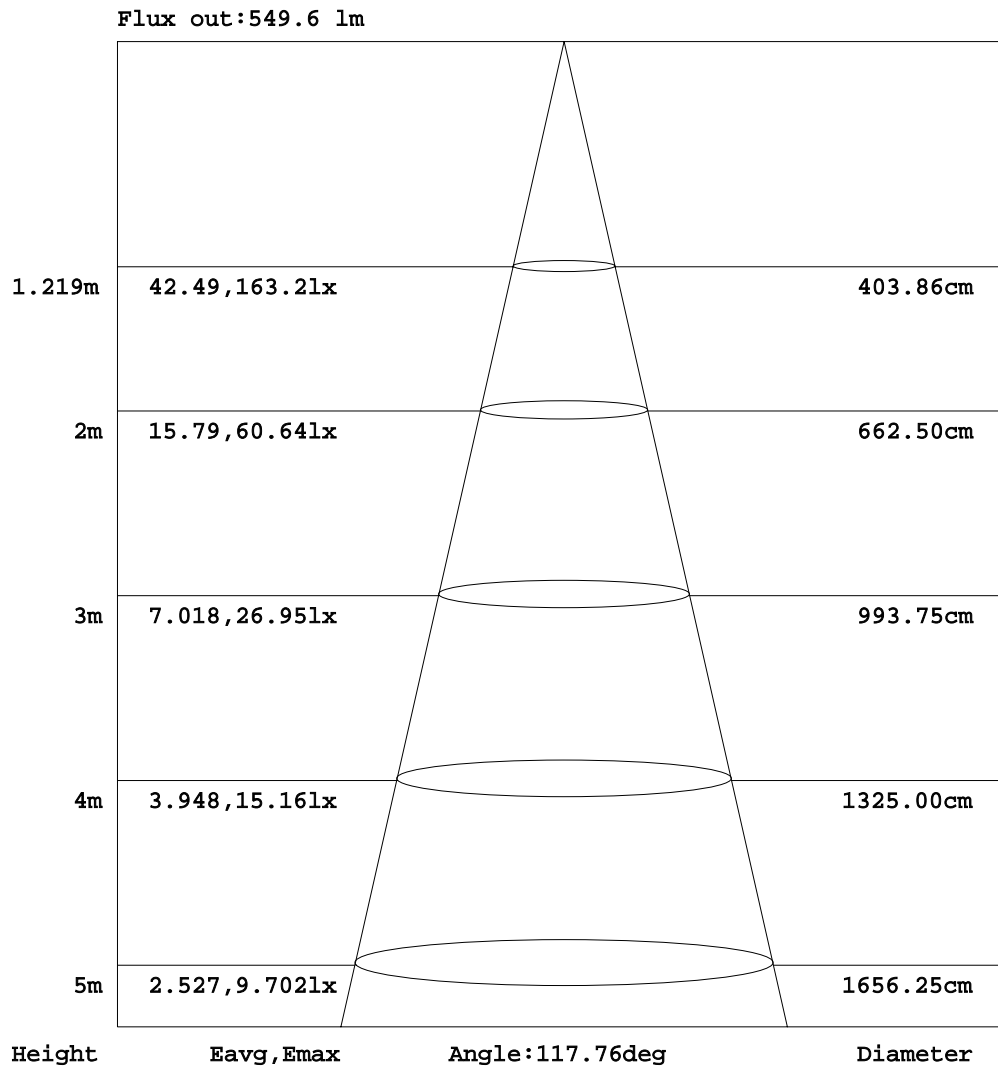


C Range: 0 - 360DEG  
 C Interval: 15.0DEG  
 Test Speed: HIGH  
 Temperature: 25.3DEG  
 Operators: DAMIN  
 Test Date: 2014-12-17

γ Range: 0 - 180DEG  
 γ Interval: 1.0DEG  
 Test System: EVERFINE GO-2000B\_V1 SYSTEM V2.0.291  
 Humidity: 65.0%  
 Test Distance: 7.400m [K=1.0000]  
 Remarks:

AAI Figure

Test:U:120.5V I:0.1196A P:14.30W PF:0.9925 Lamp Flux:21.9782x33 lm		
NAME: 4313	TYPE:LED	WEIGHT:
SPEC.:4313	DIM.:	SERIAL No.:1
	SUR.:	PROTECTION ANGLE:



Note:The Curves indicate the illuminated area and the average illumination when the luminaire is at different distance.

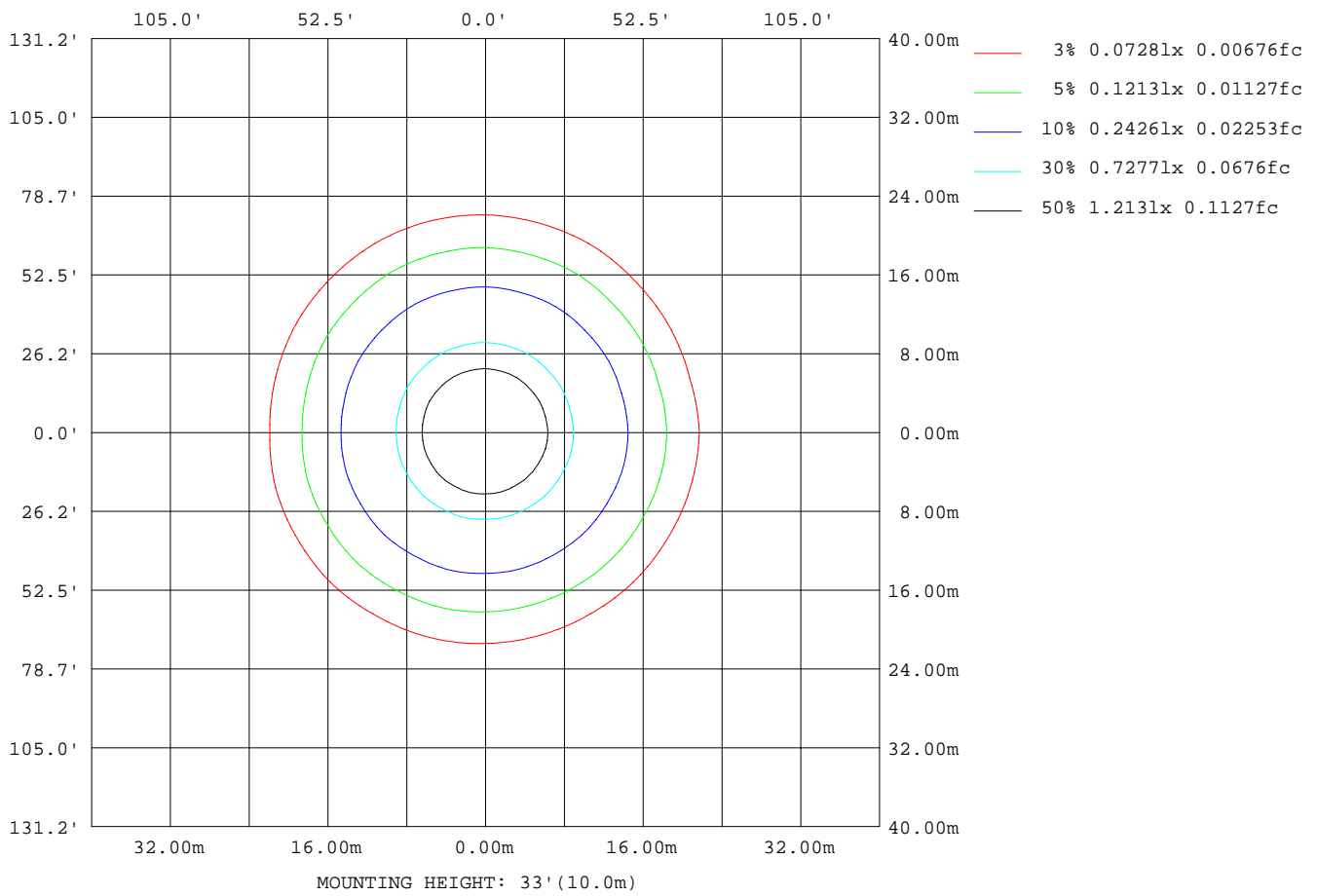
C Range: 0 - 360DEG  
 C Interval: 15.0DEG  
 Test Speed: HIGH  
 Temperature:25.3DEG  
 Operators:DAMIN  
 Test Date:2014-12-17

γ Range: 0 - 180DEG  
 γ Interval: 1.0DEG  
 Test System:EVERFINE GO-2000B\_V1 SYSTEM V2.0.291  
 Humidity:65.0%  
 Test Distance:7.400m [K=1.0000]  
 Remarks:



ISOLUX DIAGRAM

Test:U:120.5V I:0.1196A P:14.30W PF:0.9925 Lamp Flux:21.9782x33 lm		
NAME: 4313	TYPE:LED	WEIGHT:
SPEC.:4313	DIM.:	SERIAL No.:1
	SUR.:	PROTECTION ANGLE:



C Range: 0 - 360DEG  
 C Interval: 15.0DEG  
 Test Speed: HIGH  
 Temperature:25.3DEG  
 Operators:DAMIN  
 Test Date:2014-12-17

γ Range: 0 - 180DEG  
 γ Interval: 1.0DEG  
 Test System:EVERFINE GO-2000B\_V1 SYSTEM V2.0.291  
 Humidity:65.0%  
 Test Distance:7.400m [K=1.0000]  
 Remarks:

## LED Avg.L Report

Test:U:120.5V I:0.1196A P:14.30W PF:0.9925 Lamp Flux:21.9782x33 lm		
NAME: 4313	TYPE:LED	WEIGHT:
SPEC.:4313	DIM.:	SERIAL No.:1
	SUR.:	PROTECTION ANGLE:

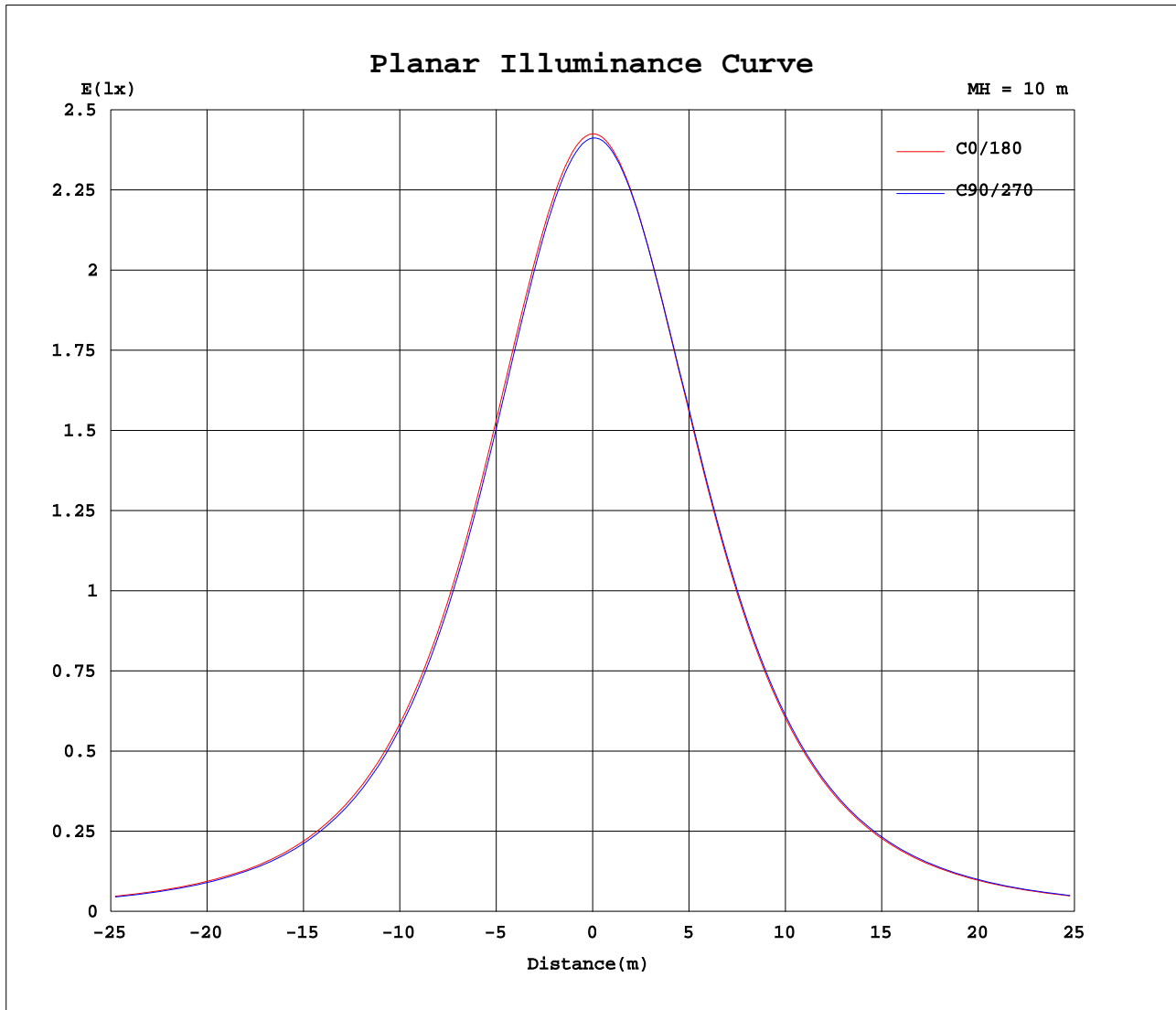
AvgL	cd/m2
L_0~180(65)av	2402
L_0~180(75)av	2733
L_0~180(85)av	5423
L_90~270(65)av	2384
L_90~270(75)av	2702
L_90~270(85)av	5342
L_45(65)av	2388
L_45(75)av	2713
L_45(85)av	5385

Standard: GB/T 29293-2012

C Range: 0 - 360DEG  
 C Interval: 15.0DEG  
 Test Speed: HIGH  
 Temperature:25.3DEG  
 Operators:DAMIN  
 Test Date:2014-12-17

$\gamma$  Range: 0 - 180DEG  
 $\gamma$  Interval: 1.0DEG  
 Test System:EVERFINE GO-2000B\_V1 SYSTEM V2.0.291  
 Humidity:65.0%  
 Test Distance:7.400m [K=1.0000]  
 Remarks:

## Planar Illuminance Curve



C Range: 0 - 360DEG  
C Interval: 15.0DEG  
Test Speed: HIGH  
Temperature: 25.3DEG  
Operators: DAMIN  
Test Date: 2014-12-17

$\gamma$  Range: 0 - 180DEG  
 $\gamma$  Interval: 1.0DEG  
Test System: EVERFINE GO-2000B\_V1 SYSTEM V2.0.291  
Humidity: 65.0%  
Test Distance: 7.400m [K=1.0000]  
Remarks:

LUMINOUS DISTRIBUTION INTENSITY DATA

Test:U:120.5V I:0.1196A P:14.30W PF:0.9925 Lamp Flux:21.9782x33 lm		
NAME: 4313	TYPE:LED	WEIGHT:
SPEC.:4313	DIM.:	SERIAL No.:1
	SUR.:	PROTECTION ANGLE:

Table--1

UNIT: cd

C( DEG) γ (DEG)	0	15	30	45	60	75	90	105	120	135	150	165	180	195	210	225	240	255	270
0	243	242	242	242	241	241	241	241	241	241	241	241	243	242	242	242	241	241	241
5	241	240	240	240	239	239	239	240	240	240	240	240	242	242	242	241	241	241	241
10	238	237	236	236	235	236	236	236	236	237	237	238	239	239	240	239	239	239	239
15	233	232	231	230	230	230	230	231	231	233	233	233	235	235	236	236	236	235	235
20	226	224	223	223	222	223	223	224	225	226	226	227	228	229	230	230	230	229	229
25	217	216	214	214	213	214	214	216	216	219	218	220	220	221	222	222	222	222	221
30	206	205	202	203	201	203	203	205	205	208	208	210	211	211	213	212	214	212	212
35	194	193	190	190	188	190	190	193	193	196	196	198	199	199	202	201	202	201	201
40	181	179	176	176	174	176	176	179	179	183	183	185	185	186	189	188	189	188	187
45	166	164	161	161	159	161	161	164	164	169	168	171	171	172	174	174	175	174	173
50	150	148	145	145	143	145	145	149	149	153	153	155	155	156	159	158	160	158	157
55	133	131	128	128	126	128	129	132	132	137	136	139	138	139	142	141	143	141	141
60	116	114	111	111	110	111	112	115	115	120	120	122	121	122	125	124	126	124	123
65	100	97.5	95.2	94.8	93.7	94.2	95.7	98.1	99.2	103	104	105	103	105	107	107	108	107	106
70	84.3	82.1	80.0	79.5	78.4	78.9	80.2	82.4	83.5	86.7	87.5	88.9	86.1	88.1	90.0	90.3	91.0	90.3	88.7
75	70.5	68.6	66.7	66.2	65.2	65.5	66.7	68.7	69.8	72.7	73.3	74.5	71.0	72.7	74.3	74.5	75.1	74.6	73.1
80	58.5	56.9	55.3	54.9	54.1	54.3	55.3	57.0	57.9	60.3	60.9	61.8	57.7	59.2	60.6	60.8	61.3	60.8	59.5
85	48.3	46.9	45.6	45.2	44.5	44.7	45.4	46.8	47.6	49.7	50.2	51.0	46.3	47.6	48.8	48.9	49.2	48.8	47.7
90	39.4	38.4	37.1	36.9	36.2	36.2	36.8	38.0	38.6	40.5	40.9	41.6	36.3	37.3	38.4	38.5	38.9	38.5	37.6
95	32.2	31.6	30.5	30.6	29.9	29.9	30.2	31.0	31.6	32.8	33.0	33.7	27.7	28.4	29.1	29.4	29.8	29.7	29.0
100	27.7	27.1	26.4	26.7	26.4	26.1	26.4	26.4	26.8	27.1	27.1	28.0	21.5	21.3	21.9	22.3	23.0	23.0	22.5
105	26.1	25.7	25.6	25.8	25.4	25.4	25.8	24.6	24.9	24.2	23.6	24.2	17.5	16.3	16.9	17.7	18.4	18.7	18.7
110	25.9	25.1	25.0	25.2	24.7	25.3	25.8	24.1	23.8	23.0	21.9	22.7	15.8	14.1	14.2	15.6	16.5	17.8	18.3
115	24.8	23.8	23.2	23.5	23.2	24.2	24.6	23.1	22.0	21.0	19.6	21.1	14.0	12.1	12.0	13.9	15.1	16.8	17.4
120	23.3	22.2	20.7	21.3	21.2	22.5	23.0	21.7	20.0	18.8	17.2	19.4	12.0	10.3	9.50	11.7	13.1	15.1	15.6
125	21.7	20.6	18.1	18.6	19.1	20.8	21.2	20.4	18.2	16.8	16.1	18.2	10.4	9.07	7.80	9.57	11.5	13.5	13.7
130	19.8	19.0	16.5	16.3	17.6	19.2	19.5	19.1	17.2	15.5	15.8	17.2	9.35	8.40	7.19	8.11	10.6	12.0	11.9
135	17.8	17.2	15.7	15.2	16.3	17.3	17.7	17.4	16.3	15.3	15.8	16.5	8.60	8.02	7.21	7.61	9.66	10.4	10.5
140	16.0	15.8	15.0	14.6	14.8	15.4	15.7	15.4	15.3	15.3	15.4	15.6	8.03	7.70	7.24	7.47	8.20	8.84	8.91
145	14.7	14.5	14.3	14.0	13.8	14.2	14.3	14.3	14.1	14.7	14.9	14.8	7.69	7.52	7.38	7.22	7.30	7.80	7.80
150	13.8	13.7	13.6	13.6	13.3	13.4	13.4	13.5	13.6	14.1	14.2	14.1	7.61	7.47	7.54	7.43	7.25	7.36	7.39
155	13.2	13.0	12.9	12.9	12.8	12.9	12.9	13.1	13.1	13.3	13.3	13.4	7.81	7.59	7.69	7.55	7.43	7.48	7.54
160	12.7	12.5	12.4	12.2	12.1	12.2	12.4	12.6	12.5	12.6	12.6	12.7	8.11	7.99	7.93	7.88	7.88	7.84	7.83
165	11.9	11.8	11.7	11.8	11.7	11.7	11.8	11.8	11.8	11.9	11.9	11.9	8.40	8.23	8.31	8.26	8.27	8.29	8.28
170	11.3	11.2	11.1	11.1	11.2	11.2	11.3	11.3	11.3	11.4	11.3	11.4	8.98	8.82	8.79	8.80	8.80	8.82	8.86
175	10.8	10.7	10.6	10.6	10.5	10.6	10.6	10.7	10.7	10.9	10.9	10.9	9.67	9.51	9.42	9.37	9.33	9.34	9.42
180	10.3	10.2	10.1	10.0	9.98	9.96	10.1	10.1	10.2	10.3	10.4	10.4	10.3	10.1	10.1	10.0	9.99	9.97	10.1

C Range: 0 - 360DEG  
 C Interval: 15.0DEG  
 Test Speed: HIGH  
 Temperature:25.3DEG  
 Operators:DAMIN  
 Test Date:2014-12-17

γ Range: 0 - 180DEG  
 γ Interval: 1.0DEG  
 Test System:EVERFINE GO-2000B\_V1 SYSTEM V2.0.291  
 Humidity:65.0%  
 Test Distance:7.400m [K=1.0000]  
 Remarks:

LUMINOUS DISTRIBUTION INTENSITY DATA

Test:U:120.5V I:0.1196A P:14.30W PF:0.9925 Lamp Flux:21.9782x33 lm		
NAME: 4313	TYPE:LED	WEIGHT:
SPEC.:4313	DIM.:	SERIAL No.:1
	SUR.:	PROTECTION ANGLE:

Table--2

UNIT: cd

C( DEG) γ (DEG)	285	300	315	330	345														
0	241	241	241	241	241														
5	241	240	240	240	239														
10	238	238	237	237	236														
15	234	233	232	232	231														
20	228	227	225	225	224														
25	219	220	217	217	215														
30	209	210	206	206	204														
35	198	198	194	194	192														
40	185	184	180	181	178														
45	170	170	166	166	163														
50	154	154	150	149	147														
55	137	137	133	133	130														
60	120	120	115	115	113														
65	103	102	98.6	97.8	96.3														
70	86.5	85.4	82.2	81.4	80.1														
75	71.2	70.2	67.5	66.9	65.8														
80	57.9	57.2	54.9	54.4	53.4														
85	46.4	45.9	43.9	43.5	42.6														
90	36.5	36.0	34.1	33.8	33.2														
95	28.2	27.6	26.1	25.8	25.4														
100	22.1	21.7	20.7	20.4	20.4														
105	18.3	18.4	18.1	18.0	18.3														
110	17.3	17.5	17.2	16.8	17.5														
115	16.3	16.0	15.3	14.9	16.2														
120	14.5	13.9	12.9	12.6	14.8														
125	12.6	11.4	10.2	10.7	13.2														
130	11.0	9.30	8.18	9.43	11.5														
135	9.62	8.10	7.44	8.63	9.84														
140	8.21	7.56	7.24	7.97	8.49														
145	7.47	7.19	7.25	7.53	7.70														
150	7.35	7.28	7.45	7.46	7.46														
155	7.64	7.65	7.84	7.53	7.74														
160	7.98	7.91	7.97	8.13	8.21														
165	8.36	8.35	8.53	8.49	8.56														
170	8.98	9.01	9.04	9.08	9.14														
175	9.51	9.55	9.70	9.75	9.79														
180	10.1	10.2	10.3	10.4	10.4														

C Range: 0 - 360DEG  
 C Interval: 15.0DEG  
 Test Speed: HIGH  
 Temperature:25.3DEG  
 Operators:DAMIN  
 Test Date:2014-12-17

γ Range: 0 - 180DEG  
 γ Interval: 1.0DEG  
 Test System:EVERFINE GO-2000B\_V1 SYSTEM V2.0.291  
 Humidity:65.0%  
 Test Distance:7.400m [K=1.0000]  
 Remarks: