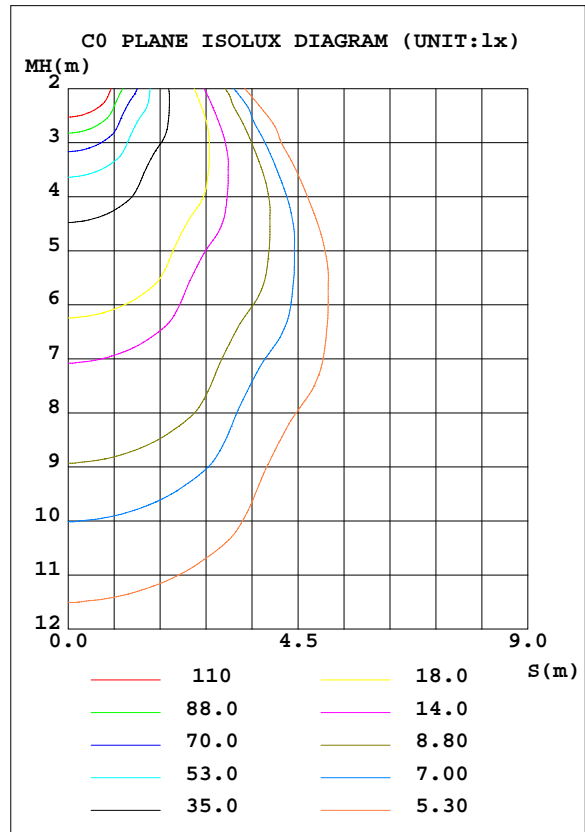
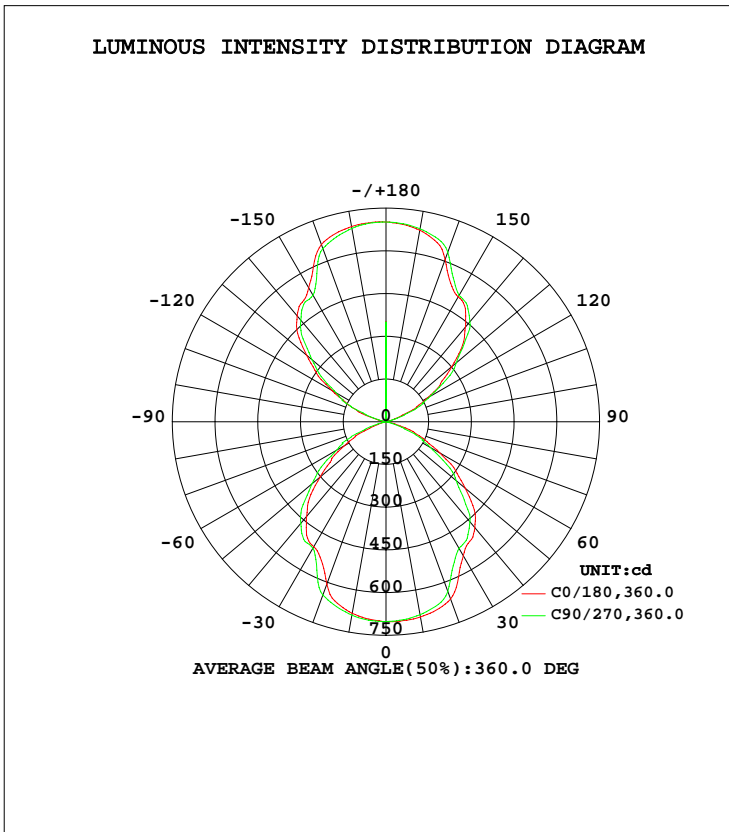


LUMINAIRE PHOTOMETRIC TEST REPORT

Test:U:120.1V I:0.3460A P:40.37W PF:0.9715 Lamp Flux:3095.63x1 lm		
NAME: 4416	TYPE:N/A	WEIGHT:N/A
SPEC.:N/A	DIM.: N/A	SERIAL No.:N/A
MFR.:	SUR.:N/A	Shielding Angle:N/A

DATA OF LAMP		PHOTOMETRIC DATA Eff: 76.68 lm/W			
MODEL	RSZ160325504-10	Imax(cd)	702.7	S/MH(C0/180)	1.16
NOMINAL POWER(W)	42	LOR(%)	100.0	S/MH(C90/270)	1.10
RATED VOLTAGE(V)	120	TOTAL FLUX(lm)	3095.6	η UP, DN(C0-180)	25.6,25.1
NOMINAL FLUX(lm)	3095.63	CIE CLASS	DIFFUSE	η UP, DN(C180-360)	24.4,24.9
LAMPS INSIDE	1	η up(%)	50.0	CIBSE SHR NOM	1.25
TEST VOLTAGE(V)	120	η down(%)	50.0	CIBSE SHR MAX	1.35



C Range: 0 - 360DEG
 C Interval: 22.5DEG
 Test Speed: MEDIUM
 Temperature:25.3DEG
 Operators:Hexy
 Test Date:2016-06-03

γ Range: 0 - 180DEG
 γ Interval: 1.0DEG
 Test System:EVERFINE GO-R3000_V2 SYSTEM V2.0.351
 Humidity:49%
 Test Distance:2.437m [K=1.0000]
 Remarks:

ZONAL FLUX DIAGRAM

ZONAL FLUX DIAGRAM:

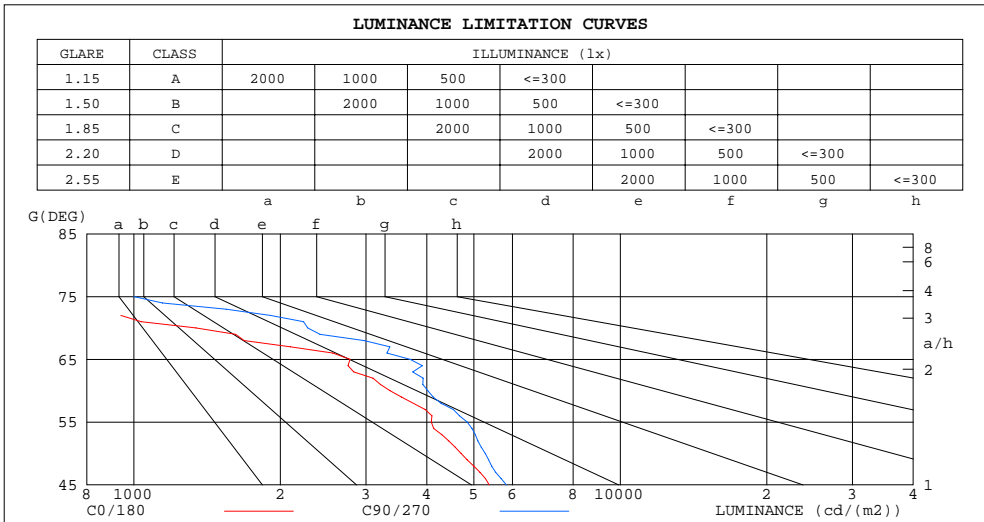
γ	C0	C45	C90	C135	C180	C225	C270	C315	γ	Φ zone	Φ total	Φ lum,lamp
10	683.0	686.8	689.3	694.6	696.1	692.7	688.1	685.0	0- 10	66.41	66.41	2.15,2.15
20	607.4	625.8	647.8	657.4	662.6	655.4	634.3	616.8	10- 20	189.2	255.6	8.26,8.26
30	507.2	510.3	513.5	530.9	543.5	526.5	513.1	508.4	20- 30	263.1	518.7	16.8,16.8
40	433.6	455.5	465.8	482.5	485.1	471.0	458.6	444.0	30- 40	310.8	829.5	26.8,26.8
50	302.4	334.8	339.0	350.8	363.5	346.5	322.6	325.2	40- 50	310.0	1139	36.8,36.8
60	168.1	186.8	200.9	243.1	218.2	230.7	179.8	176.9	50- 60	242.2	1382	44.6,44.6
70	45.89	54.61	77.90	102.3	101.5	80.82	66.98	55.73	60- 70	133.0	1515	48.9,48.9
80	4.614	4.240	5.894	7.565	9.631	6.842	5.191	4.260	70- 80	30.08	1545	49.9,49.9
90	1.806	1.004	1.036	1.131	1.920	1.524	1.483	1.369	80- 90	2.951	1548	50,50
100	9.631	7.565	5.894	4.240	4.614	4.260	5.191	6.842	90-100	2.951	1551	50.1,50.1
110	101.5	102.3	77.90	54.61	45.89	55.73	66.98	80.82	100-110	30.08	1581	51.1,51.1
120	218.2	243.1	200.9	186.8	168.1	176.9	179.8	230.7	110-120	133.0	1714	55.4,55.4
130	363.5	350.8	339.0	334.8	302.4	325.2	322.6	346.5	120-130	242.2	1956	63.2,63.2
140	485.1	482.5	465.8	455.5	433.6	444.0	458.6	471.0	130-140	310.0	2266	73.2,73.2
150	543.5	530.9	513.5	510.3	507.2	508.4	513.1	526.5	140-150	310.8	2577	83.2,83.2
160	662.6	657.4	647.8	625.8	607.4	616.8	634.3	655.4	150-160	263.1	2840	91.7,91.7
170	696.1	694.6	689.3	686.8	683.0	685.0	688.1	692.7	160-170	189.2	3029	97.9,97.9
180	701.4	701.4	701.4	701.4	701.4	701.4	701.4	701.4	170-180	66.41	3096	100,100
DEG	LUMINOUS INTENSITY:cd Less than 25% Percent = 15.3 %									UNIT:lm		

C Range: 0 - 360DEG
 C Interval: 22.5DEG
 Test Speed: MEDIUM
 Temperature:25.3DEG
 Operators:Hexy
 Test Date:2016-06-03

γ Range: 0 - 180DEG
 γ Interval: 1.0DEG
 Test System:EVERFINE GO-R3000_V2 SYSTEM V2.0.351
 Humidity:49%
 Test Distance:2.437m [K=1.0000]
 Remarks:

LUMINANCE LIMITATION CURVES

Test:U:120.1V I:0.3460A P:40.37W PF:0.9715 Lamp Flux:3095.63x1 lm		
NAME:	TYPE:N/A	WEIGHT:N/A
SPEC.:N/A	DIM.: N/A	SERIAL No.:N/A
MFR.:	SUR.:N/A	Shielding Angle:N/A



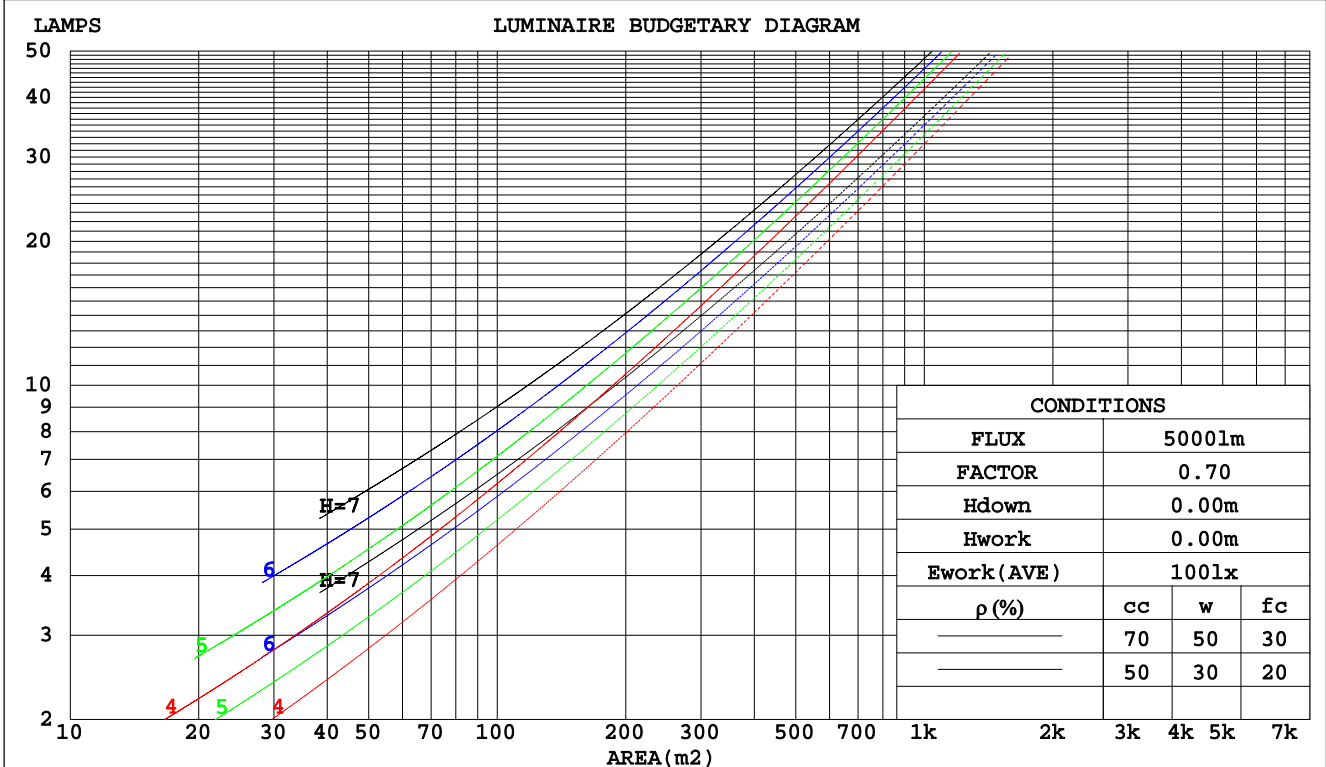
C Range: 0 - 360DEG
 C Interval: 22.5DEG
 Test Speed: MEDIUM
 Temperature: 25.3DEG
 Operators: Hexy
 Test Date: 2016-06-03

γ Range: 0 - 180DEG
 γ Interval: 1.0DEG
 Test System: EVERFINE GO-R3000_V2 SYSTEM V2.0.351
 Humidity: 49%
 Test Distance: 2.437m [K=1.0000]
 Remarks:

CU AND LUMINAIRE BUDGETARY ESTIMATE DIAGRAM

Test:U:120.1V I:0.3460A P:40.37W PF:0.9715 Lamp Flux:3095.63x1 lm		
NAME:	TYPE:N/A	WEIGHT:N/A
SPEC.:N/A	DIM.: N/A	SERIAL No.:N/A
MFR.:	SUR.:N/A	Shielding Angle:N/A

pcc	80%			70%			50%			30%			10%			0
	50%	30%	10%	50%	30%	10%	50%	30%	10%	50%	30%	10%	50%	30%	10%	0
pw																0
pfc																0
RCR	RCR:Room Cavity Ratio			Coefficients of Utilization(CU)												
0.0	1.07	1.07	1.07	.99	.99	.99	.83	.83	.83	.69	.69	.69	.56	.56	.56	.50
1.0	.95	.91	.88	.88	.85	.82	.74	.72	.70	.62	.61	.59	.51	.50	.49	.44
2.0	.83	.78	.73	.77	.72	.68	.66	.62	.59	.55	.53	.51	.46	.44	.42	.38
3.0	.74	.67	.61	.69	.62	.58	.59	.54	.50	.49	.46	.43	.41	.39	.37	.33
4.0	.66	.58	.52	.61	.54	.49	.52	.47	.43	.44	.41	.38	.37	.34	.32	.28
5.0	.59	.51	.45	.55	.48	.43	.47	.42	.38	.40	.36	.33	.33	.30	.28	.25
6.0	.53	.45	.39	.49	.42	.37	.42	.37	.33	.36	.32	.29	.30	.27	.25	.22
7.0	.48	.40	.35	.45	.38	.33	.39	.33	.29	.33	.29	.26	.28	.25	.22	.20
8.0	.43	.36	.31	.41	.34	.29	.35	.30	.26	.30	.26	.23	.26	.22	.20	.18
9.0	.40	.32	.27	.37	.31	.26	.32	.27	.23	.28	.24	.21	.24	.20	.18	.16
10.0	.36	.29	.25	.34	.28	.23	.30	.25	.21	.26	.22	.19	.22	.19	.16	.15



C Range: 0 - 360DEG
 C Interval: 22.5DEG
 Test Speed: MEDIUM
 Temperature: 25.3DEG
 Operators: Hexy
 Test Date: 2016-06-03

γ Range: 0 - 180DEG
 γ Interval: 1.0DEG
 Test System: EVERFINE GO-R3000_V2 SYSTEM V2.0.351
 Humidity: 49%
 Test Distance: 2.437m [K=1.0000]
 Remarks:

WEC AND CCEC

Test:U:120.1V I:0.3460A P:40.37W PF:0.9715 Lamp Flux:3095.63x1 lm		
NAME:	TYPE:N/A	WEIGHT:N/A
SPEC.:N/A	DIM.: N/A	SERIAL No.:N/A
MFR.:	SUR.:N/A	Shielding Angle:N/A

ρcc	80%			70%			50%			30%			10%			0
ρw	50%	30%	10%	50%	30%	10%	50%	30%	10%	50%	30%	10%	50%	30%	10%	0
ρfc	20%			20%			20%			20%			20%			0
RCR	RCR:Room Cavity Ratio						Wall Exitance Coefficients(WEC)									
0.0																
1.0	.256	.145	.046	.234	.133	.042	.192	.110	.035	.155	.089	.029	.120	.069	.022	
2.0	.243	.133	.041	.223	.123	.038	.185	.103	.032	.151	.085	.026	.119	.067	.021	
3.0	.228	.121	.036	.209	.112	.034	.175	.095	.029	.143	.079	.024	.114	.063	.020	
4.0	.213	.111	.033	.196	.103	.030	.165	.087	.026	.135	.073	.022	.108	.059	.018	
5.0	.199	.101	.029	.184	.094	.027	.155	.080	.024	.128	.067	.020	.102	.055	.016	
6.0	.186	.093	.027	.172	.087	.025	.145	.074	.022	.120	.062	.018	.097	.051	.015	
7.0	.174	.086	.024	.161	.080	.023	.137	.069	.020	.113	.058	.017	.091	.047	.014	
8.0	.164	.080	.023	.152	.075	.021	.129	.064	.018	.107	.054	.016	.086	.044	.013	
9.0	.154	.075	.021	.143	.070	.020	.121	.060	.017	.101	.051	.015	.082	.042	.012	
10.0	.146	.070	.019	.135	.065	.018	.115	.056	.016	.096	.048	.014	.078	.039	.011	

ρcc	80%			70%			50%			30%			10%			0
ρw	50%	30%	10%	50%	30%	10%	50%	30%	10%	50%	30%	10%	50%	30%	10%	0
ρfc	20%			20%			20%			20%			20%			0
RCR	RCR:Room Cavity Ratio						Ceiling Cavity Exitance Coefficients(CCEC)									
0.0	.571	.571	.571	.488	.488	.488	.333	.333	.333	.191	.191	.191	.061	.061	.061	
1.0	.561	.541	.523	.480	.464	.450	.328	.319	.311	.189	.185	.181	.060	.059	.059	
2.0	.552	.519	.491	.473	.447	.424	.324	.309	.296	.187	.180	.173	.060	.058	.057	
3.0	.545	.503	.469	.467	.434	.407	.321	.301	.285	.185	.176	.168	.060	.057	.055	
4.0	.538	.491	.454	.462	.424	.395	.318	.295	.278	.184	.173	.164	.059	.056	.054	
5.0	.532	.481	.444	.457	.416	.386	.315	.291	.273	.182	.171	.162	.059	.056	.053	
6.0	.526	.474	.436	.452	.410	.380	.312	.287	.269	.181	.169	.160	.058	.055	.053	
7.0	.520	.467	.430	.447	.405	.375	.309	.284	.266	.180	.167	.158	.058	.055	.052	
8.0	.515	.462	.426	.443	.401	.372	.307	.282	.264	.178	.166	.157	.058	.054	.052	
9.0	.510	.458	.423	.439	.397	.369	.304	.279	.262	.177	.165	.156	.057	.054	.052	
10.0	.505	.454	.420	.435	.394	.367	.302	.277	.261	.176	.164	.156	.057	.054	.052	

C Range: 0 - 360DEG
 C Interval: 22.5DEG
 Test Speed: MEDIUM
 Temperature:25.3DEG
 Operators:Hexy
 Test Date:2016-06-03

γ Range: 0 - 180DEG
 γ Interval: 1.0DEG
 Test System:EVERFINE GO-R3000_V2 SYSTEM V2.0.351
 Humidity:49%
 Test Distance:2.437m [K=1.0000]
 Remarks:

UGR(Unified Glare Rating) Table

Test:U:120.1V I:0.3460A P:40.37W PF:0.9715 Lamp Flux:3095.63x1 lm										
NAME:					TYPE:N/A			WEIGHT:N/A		
SPEC.:N/A					DIM.: N/A			SERIAL No.:N/A		
MFR.:					SUR.:N/A			Shielding Angle:N/A		
ceiling/cavity	0.7	0.7	0.5	0.5	0.3	0.7	0.7	0.5	0.5	0.3
walls	0.5	0.3	0.5	0.3	0.3	0.5	0.3	0.5	0.3	0.3
working plane	0.2	0.2	0.2	0.2	0.2	0.2	0.2	0.2	0.2	0.2
Room dimensions	Viewed crosswise					Viewed endwise				
x = 2H y = 2H	14.0	14.9	14.9	15.8	16.8	14.7	15.6	15.5	16.4	17.5
3H	14.2	15.0	15.1	15.9	17.0	15.2	16.0	16.0	16.8	18.0
4H	14.1	14.8	15.0	15.7	16.8	15.1	15.8	16.0	16.7	17.9
6H	13.9	14.6	14.8	15.5	16.7	14.9	15.6	15.8	16.5	17.7
8H	13.8	14.5	14.7	15.4	16.6	14.8	15.5	15.8	16.4	17.6
12H	13.7	14.4	14.7	15.3	16.5	14.8	15.4	15.7	16.3	17.5
4H 2H	14.2	14.9	15.1	15.8	16.9	14.7	15.4	15.6	16.3	17.5
3H	14.4	15.0	15.3	15.9	17.1	15.2	15.8	16.1	16.8	17.9
4H	14.2	14.8	15.2	15.7	16.9	15.1	15.7	16.1	16.6	17.9
6H	14.0	14.5	15.0	15.5	16.7	15.0	15.5	15.9	16.4	17.7
8H	14.0	14.4	14.9	15.4	16.6	14.9	15.3	15.9	16.3	17.6
12H	13.9	14.3	14.9	15.2	16.5	14.8	15.2	15.8	16.2	17.5
8H 4H	14.0	14.4	15.0	15.4	16.7	14.9	15.3	15.9	16.3	17.6
6H	13.8	14.2	14.8	15.2	16.5	14.7	15.1	15.7	16.1	17.4
8H	13.7	14.0	14.7	15.1	16.4	14.6	15.0	15.7	16.0	17.3
12H	13.6	13.9	14.7	14.9	16.3	14.6	14.8	15.6	15.8	17.2
12H 4H	13.9	14.3	14.9	15.3	16.6	14.8	15.2	15.8	16.2	17.5
6H	13.7	14.0	14.7	15.0	16.4	14.6	15.0	15.7	16.0	17.3
8H	13.6	13.9	14.7	14.9	16.3	14.5	14.8	15.6	15.8	17.2
Variations with the observer position at spacings:										
S = 1.0H	+ 0.6 / - 0.7					+ 0.5 / - 0.6				
1.5H	+ 0.3 / - 0.5					+ 0.3 / - 0.3				
2.0H	+ 1.0 / - 1.2					+ 1.1 / - 1.2				

CIE Pub.117 Corrected 3096 lm Total Lamp Luminous Flux.(8log(F/F0) = 3.9)

C Range: 0 - 360DEG
 C Interval: 22.5DEG
 Test Speed: MEDIUM
 Temperature:25.3DEG
 Operators:Hexy
 Test Date:2016-06-03

γ Range: 0 - 180DEG
 γ Interval: 1.0DEG
 Test System:EVERFINE GO-R3000_V2 SYSTEM V2.0.351
 Humidity:49%
 Test Distance:2.437m [K=1.0000]
 Remarks:

UTILIZATION FACTORS TABLE

Test:U:120.1V I:0.3460A P:40.37W PF:0.9715 Lamp Flux:3095.63x1 lm		
NAME:	TYPE:N/A	WEIGHT:N/A
SPEC.:N/A	DIM.: N/A	SERIAL No.:N/A
MFR.:	SUR.:N/A	Shielding Angle:N/A

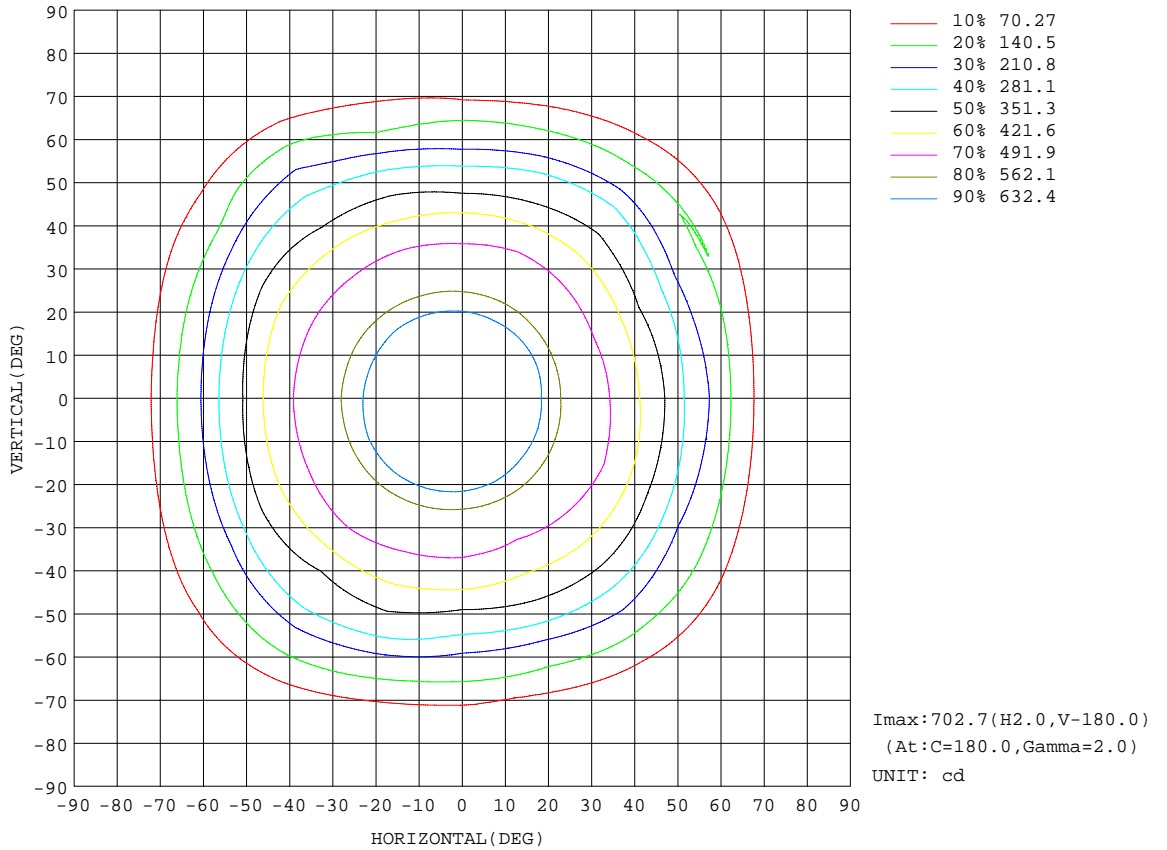
REFLECTANCE										
Ceiling	0.8	0.8	0.8	0.7	0.7	0.7	0.5	0.5	0.5	0
Walls	0.7	0.5	0.3	0.7	0.5	0.3	0.7	0.5	0.3	0
Working plane	0.2	0.2	0.2	0.2	0.2	0.2	0.2	0.2	0.2	0
ROOM INDEX	UTILIZATION FACTORS(PERCENT) $k(RI) \times RCR = 5$									
k = 0.60	46	36	30	44	35	29	39	32	27	19
0.80	56	45	39	53	43	37	47	39	34	24
1.00	64	53	47	60	51	45	53	47	41	29
1.25	71	61	54	66	58	52	58	51	47	33
1.50	76	66	60	71	63	57	61	55	51	35
2.00	83	74	68	77	70	64	66	61	57	39
2.50	87	79	73	81	74	69	69	65	61	40
3.00	90	83	78	84	78	73	71	67	64	42
4.00	94	88	84	87	82	78	74	71	68	44
5.00	97	92	88	89	85	82	76	73	71	45
ROOM INDEX	UF(total)									Direct
According to DIN EN 13032-2 2004			Suspended				SHRNOM = 1.25			

C Range: 0 - 360DEG
 C Interval: 22.5DEG
 Test Speed: MEDIUM
 Temperature:25.3DEG
 Operators:Hexy
 Test Date:2016-06-03

γ Range: 0 - 180DEG
 γ Interval: 1.0DEG
 Test System:EVERFINE GO-R3000_V2 SYSTEM V2.0.351
 Humidity:49%
 Test Distance:2.437m [K=1.0000]
 Remarks:

ISOCANDELA DIAGRAM

Test:U:120.1V I:0.3460A P:40.37W PF:0.9715 Lamp Flux:3095.63x1 lm		
NAME:	TYPE:N/A	WEIGHT:N/A
SPEC.:N/A	DIM.: N/A	SERIAL No.:N/A
MFR.:	SUR.:N/A	Shielding Angle:N/A

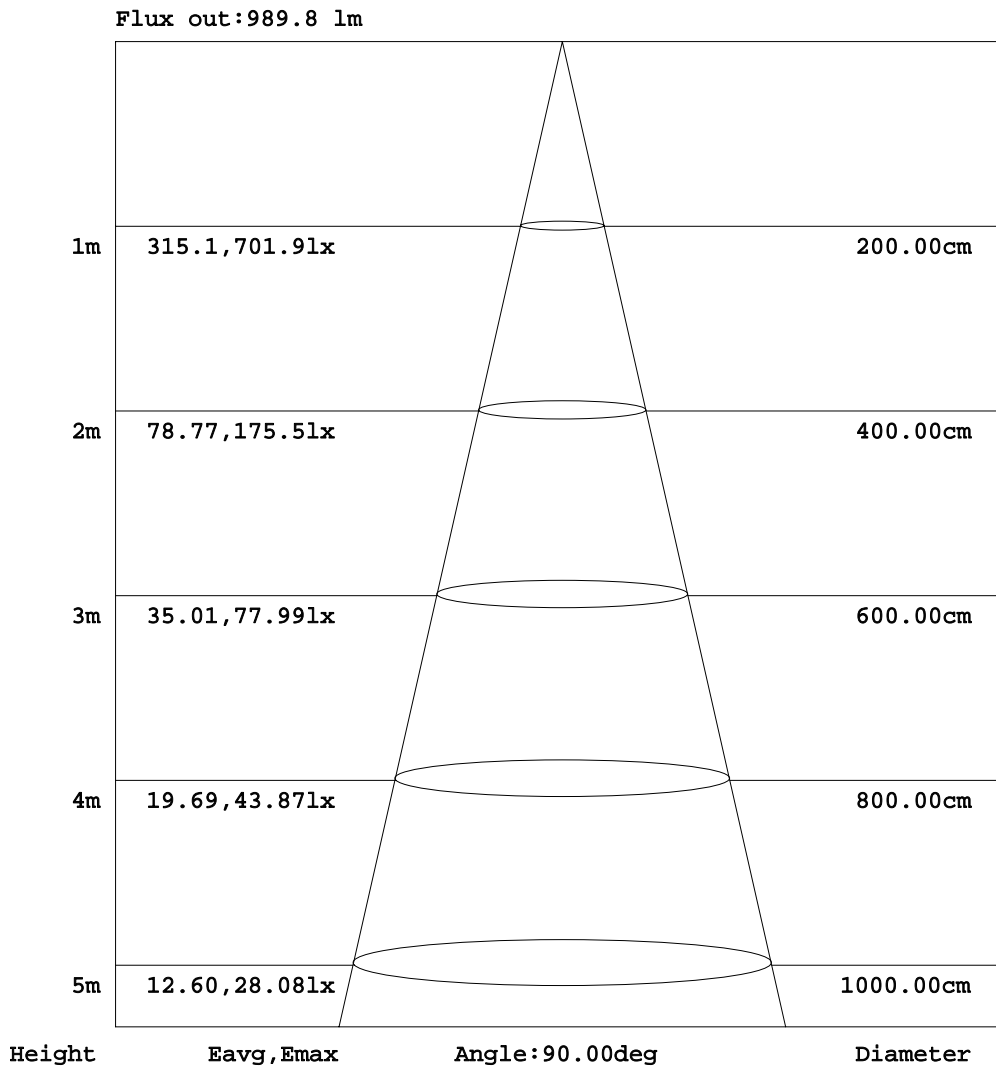


C Range: 0 - 360DEG
 C Interval: 22.5DEG
 Test Speed: MEDIUM
 Temperature: 25.3DEG
 Operators: Hexy
 Test Date: 2016-06-03

γ Range: 0 - 180DEG
 γ Interval: 1.0DEG
 Test System: EVERFINE GO-R3000_V2 SYSTEM V2.0.351
 Humidity: 49%
 Test Distance: 2.437m [K=1.0000]
 Remarks:

AAI Figure

Test:U:120.1V I:0.3460A P:40.37W PF:0.9715 Lamp Flux:3095.63x1 lm		
NAME:	TYPE:N/A	WEIGHT:N/A
SPEC.:N/A	DIM.: N/A	SERIAL No.:N/A
MFR.:	SUR.:N/A	Shielding Angle:N/A



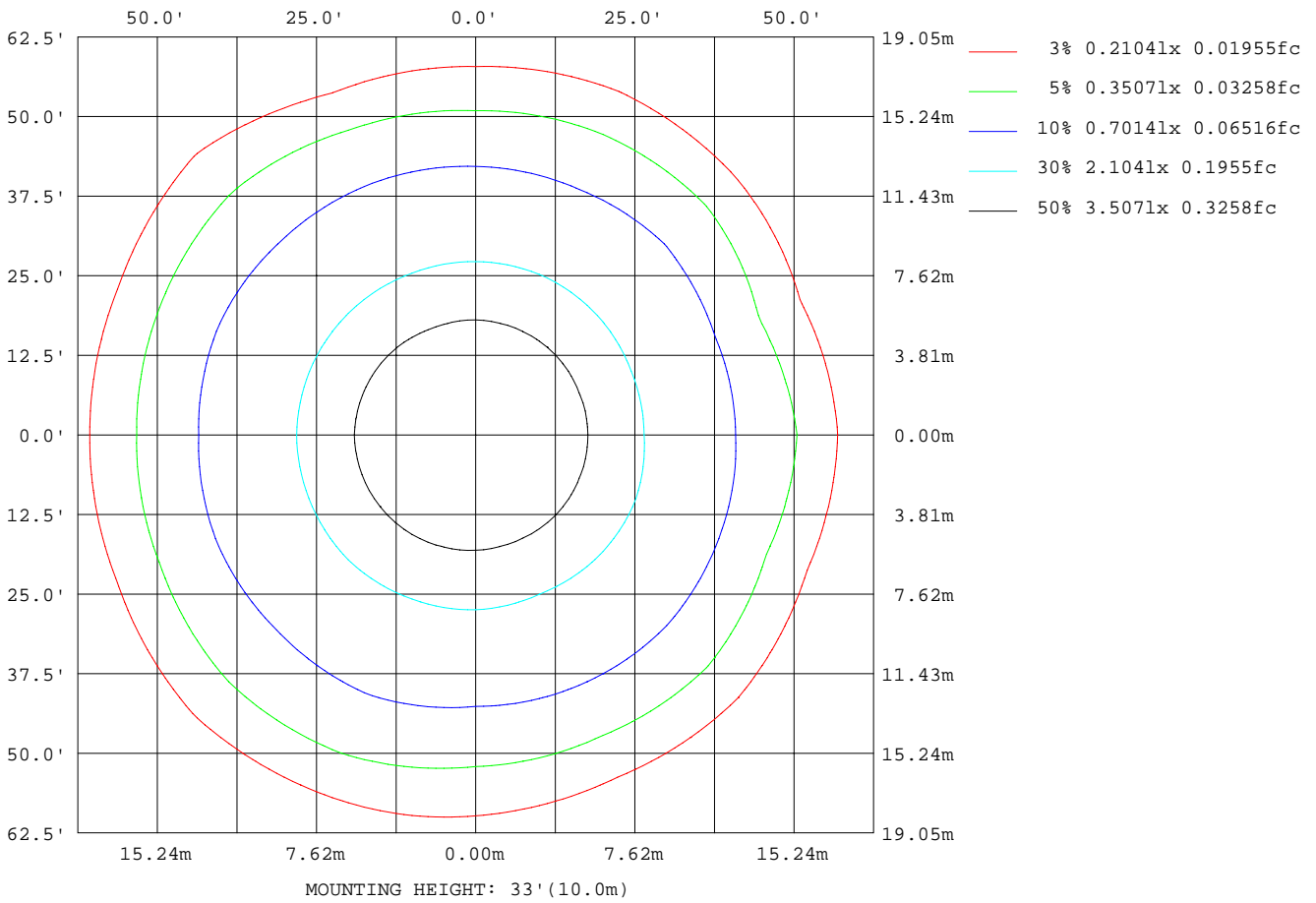
Note:The Curves indicate the illuminated area and the average illumination when the luminaire is at different distance.

C Range: 0 - 360DEG
C Interval: 22.5DEG
Test Speed: MEDIUM
Temperature:25.3DEG
Operators:Hexy
Test Date:2016-06-03

γ Range: 0 - 180DEG
γ Interval: 1.0DEG
Test System:EVERFINE GO-R3000_V2 SYSTEM V2.0.351
Humidity:49%
Test Distance:2.437m [K=1.0000]
Remarks:

ISOLUX DIAGRAM

Test:U:120.1V I:0.3460A P:40.37W PF:0.9715 Lamp Flux:3095.63x1 lm		
NAME:	TYPE:N/A	WEIGHT:N/A
SPEC.:N/A	DIM.: N/A	SERIAL No.:N/A
MFR.:	SUR.:N/A	Shielding Angle:N/A



C Range: 0 - 360DEG
 C Interval: 22.5DEG
 Test Speed: MEDIUM
 Temperature:25.3DEG
 Operators:Hexy
 Test Date:2016-06-03

γ Range: 0 - 180DEG
 γ Interval: 1.0DEG
 Test System:EVERFINE GO-R3000_V2 SYSTEM V2.0.351
 Humidity:49%
 Test Distance:2.437m [K=1.0000]
 Remarks:

LED Avg.L Report

Test:U:120.1V I:0.3460A P:40.37W PF:0.9715 Lamp Flux:3095.63x1 lm		
NAME:	TYPE:N/A	WEIGHT:N/A
SPEC.:N/A	DIM.: N/A	SERIAL No.:N/A
MFR.:	SUR.:N/A	Shielding Angle:N/A

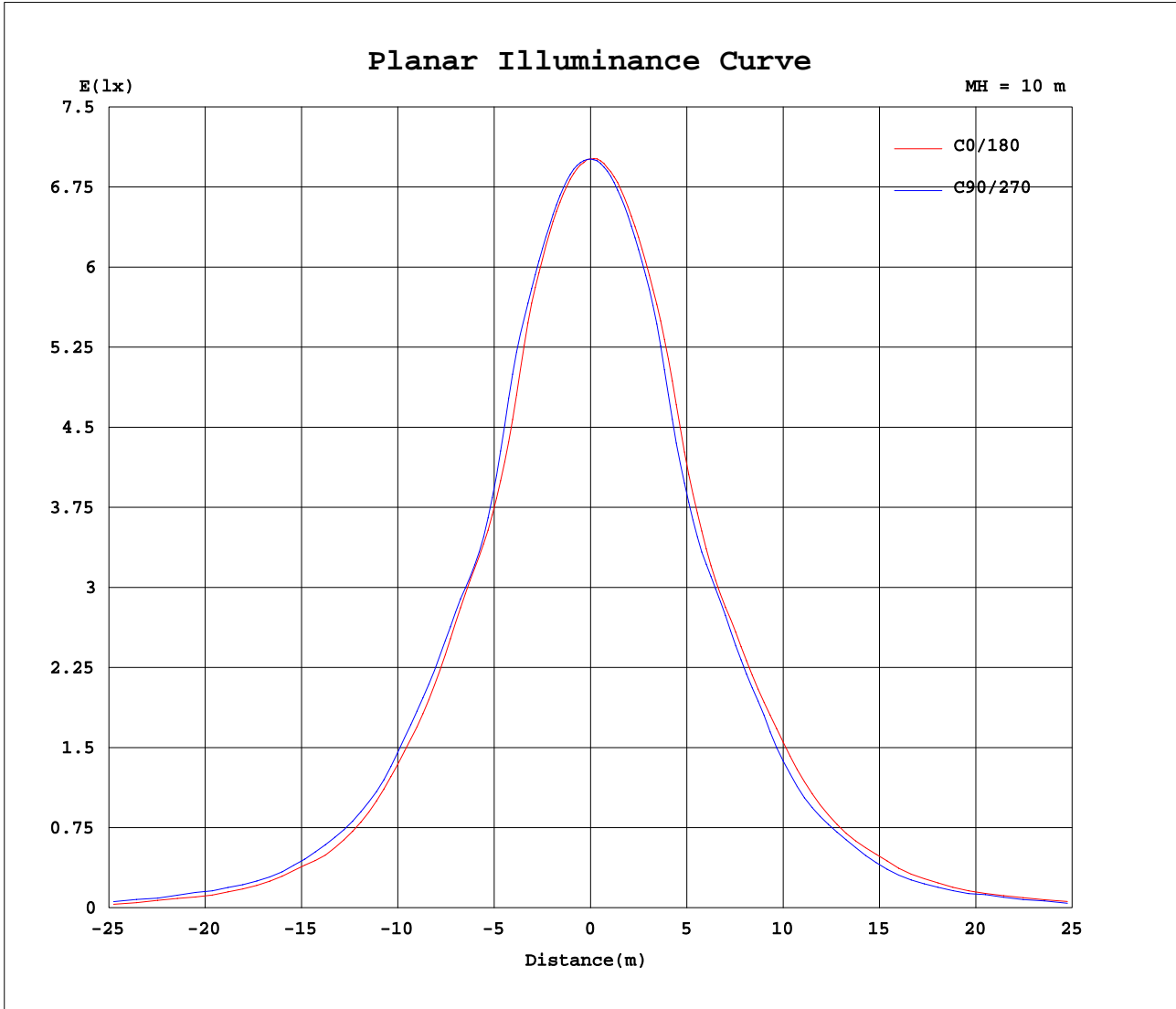
AvgL	cd/m2
L_0~180(65)av	3179
L_0~180(75)av	876
L_0~180(85)av	362
L_90~270(65)av	3405
L_90~270(75)av	877
L_90~270(85)av	225
L_45(65)av	3460
L_45(75)av	897
L_45(85)av	235

Standard: GB/T 29293-2012

C Range: 0 - 360DEG
 C Interval: 22.5DEG
 Test Speed: MEDIUM
 Temperature:25.3DEG
 Operators:Hexy
 Test Date:2016-06-03

γ Range: 0 - 180DEG
 γ Interval: 1.0DEG
 Test System:EVERFINE GO-R3000_V2 SYSTEM V2.0.351
 Humidity:49%
 Test Distance:2.437m [K=1.0000]
 Remarks:

Planar Illuminance Curve



C Range: 0 - 360DEG
 C Interval: 22.5DEG
 Test Speed: MEDIUM
 Temperature: 25.3DEG
 Operators: Hexy
 Test Date: 2016-06-03

γ Range: 0 - 180DEG
 γ Interval: 1.0DEG
 Test System: EVERFINE GO-R3000_V2 SYSTEM V2.0.351
 Humidity: 49%
 Test Distance: 2.437m [K=1.0000]
 Remarks:

LUMINOUS DISTRIBUTION INTENSITY DATA

Test:U:120.1V I:0.3460A P:40.37W PF:0.9715 Lamp Flux:3095.63x1 lm		
NAME:	TYPE:N/A	WEIGHT:N/A
SPEC.:N/A	DIM.: N/A	SERIAL No.:N/A
MFR.:	SUR.:N/A	Shielding Angle:N/A

Table--1

UNIT: cd

C(DEG) \ γ (DEG)	0	22.5	45	67.5	90	112.5	135	157.5	180	202.5	225	247.5	270	292.5	315	337.5			
0	701	701	701	701	701	701	701	701	701	701	701	701	701	701	701	701			
5	696	696	697	698	700	701	701	702	701	701	700	699	698	697	697	696			
10	683	685	687	688	689	694	695	696	696	694	693	691	688	685	685	683			
15	660	662	666	671	672	678	680	682	684	682	679	675	671	668	666	663			
20	607	617	626	640	648	653	657	661	663	659	655	645	634	624	617	613			
25	537	541	551	562	575	590	602	610	603	594	582	568	558	549	542	536			
30	507	508	510	506	513	523	531	538	543	535	527	511	513	510	508	503			
35	486	497	494	491	504	510	518	514	512	507	503	500	498	498	489	479			
40	434	454	456	450	466	472	482	482	485	479	471	461	459	455	444	432			
45	380	378	396	399	412	426	424	435	439	436	414	400	389	386	381	354			
50	302	322	335	339	339	371	351	378	363	376	347	339	323	321	325	296			
55	235	233	258	270	278	316	310	305	298	301	296	281	260	273	266	210			
60	168	160	187	184	201	234	243	217	218	219	231	188	180	187	177	150			
65	118	115	124	128	156	156	176	145	151	136	167	122	132	131	119	107			
70	45.9	46.6	54.6	63.7	77.9	103	102	82.4	101	79.1	80.8	72.6	67.0	57.3	55.7	50.1			
75	11.1	13.7	13.3	19.2	25.9	33.2	35.0	34.9	34.2	32.8	30.6	24.3	19.6	14.0	14.0	11.3			
80	4.61	4.07	4.24	5.09	5.89	6.90	7.56	8.20	9.63	7.83	6.84	5.95	5.19	4.52	4.26	4.12			
85	2.32	1.54	1.35	1.48	1.83	2.30	2.60	2.99	3.98	3.00	2.53	2.18	2.08	1.80	1.71	1.80			
90	1.81	1.24	1.00	1.00	1.04	1.07	1.13	1.26	1.92	1.53	1.52	1.38	1.48	1.39	1.37	1.50			
95	3.98	2.99	2.60	2.30	1.83	1.48	1.35	1.54	2.32	1.80	1.71	1.80	2.08	2.18	2.53	3.00			
100	9.63	8.20	7.56	6.90	5.89	5.09	4.24	4.07	4.61	4.12	4.26	4.52	5.19	5.95	6.84	7.83			
105	34.2	34.9	35.0	33.2	25.9	19.2	13.3	13.7	11.1	11.3	14.0	14.0	19.6	24.3	30.6	32.8			
110	101	82.4	102	103	77.9	63.7	54.6	46.6	45.9	50.1	55.7	57.3	67.0	72.6	80.8	79.1			
115	151	145	176	156	156	128	124	115	118	107	119	131	132	122	167	136			
120	218	217	243	234	201	184	187	160	168	150	177	187	180	188	231	219			
125	298	305	310	316	278	270	258	233	235	210	266	273	260	281	296	301			
130	363	378	351	371	339	339	335	322	302	296	325	321	323	339	347	376			
135	439	435	424	426	412	399	396	378	380	354	381	386	389	400	414	436			
140	485	482	482	472	466	450	456	454	434	432	444	455	459	461	471	479			
145	512	514	518	510	504	491	494	497	486	479	489	498	498	500	503	507			
150	543	538	531	523	513	506	510	508	507	503	508	510	513	511	527	535			
155	603	610	602	590	575	562	551	541	537	536	542	549	558	568	582	594			
160	663	661	657	653	648	640	626	617	607	613	617	624	634	645	655	659			
165	684	682	680	678	672	671	666	662	660	663	666	668	671	675	679	682			
170	696	696	695	694	689	688	687	685	683	683	685	685	688	691	693	694			
175	701	702	701	701	700	698	697	696	696	696	697	697	698	699	700	701			
180	701	701	701	701	701	701	701	701	701	701	701	701	701	701	701	701			

C Range: 0 - 360DEG
 C Interval: 22.5DEG
 Test Speed: MEDIUM
 Temperature:25.3DEG
 Operators:Hexy
 Test Date:2016-06-03

γ Range: 0 - 180DEG
 γ Interval: 1.0DEG
 Test System:EVERFINE GO-R3000_V2 SYSTEM V2.0.351
 Humidity:49%
 Test Distance:2.437m [K=1.0000]
 Remarks: