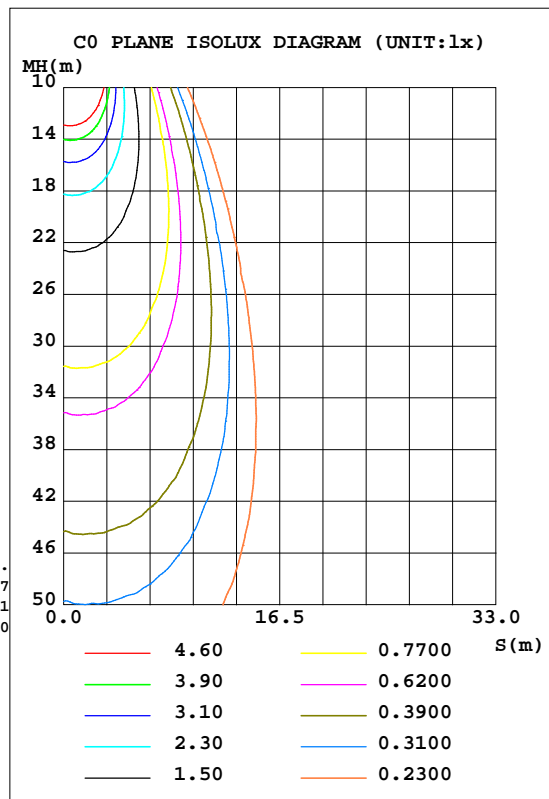
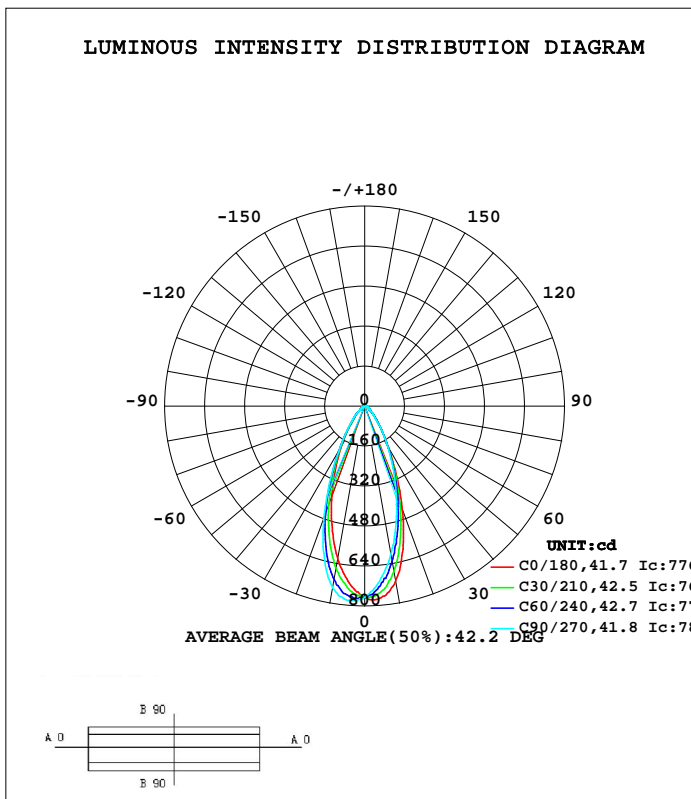


LUMINAIRE PHOTOMETRIC TEST REPORT

Test:U:120.4V I:0.0684A P:8.176W PF:0.9929 Lamp Flux:580.469x1 lm		
NAME: 8821	TYPE:LED tirm	WEIGHT:
SPEC.:8W CRI90	DIM.:	SERIAL No.:1
MFR.: AOM-LITE	SUR.:φ65MM	Shielding Angle:

DATA OF LAMP		PHOTOMETRIC DATA Eff: 70.99 lm/W			
MODEL	AC COB	I _{max} (cd)	787.8	S/MH(C0/180)	0.63
NOMINAL POWER(W)	8	LOR(%)	100.0	S/MH(C90/270)	0.73
RATED VOLTAGE(V)	120	TOTAL FLUX(lm)	580.47	η UP, DN(C0-180)	1.6,46.0
NOMINAL FLUX(lm)	580.469	CIE CLASS	DIRECT	η UP, DN(C180-360)	1.4,51.0
LAMPS INSIDE	1	η up(%)	3.0	CIBSE SHR NOM	0.50
TEST VOLTAGE(V)	120	η down(%)	97.0	CIBSE SHR MAX	0.70



C Range: 0 - 360DEG
 C Interval: 10.0DEG
 Test Speed: MEDIUM
 Temperature:25.3DEG
 Operators:Kevin
 Test Date:2016-06-21

γ Range: 0 - 180DEG
 γ Interval: 0.5DEG
 Test System:EVERFINE GO-2000B_V1 SYSTEM V2.0.351
 Humidity:65.0%
 Test Distance:6.950m [K=1.0000]
 Remarks:

ZONAL FLUX DIAGRAM

ZONAL FLUX DIAGRAM:

γ	C0	C45	C90	C135	C180	C225	C270	C315	γ	φ zone	φ total	%lum,lamp
5	768.7	733.3	701.8	685.9	710.8	750.0	780.1	784.9	0- 5	17.96	17.96	3.41,3.41
10	712.5	649.8	603.3	589.6	622.1	682.0	738.5	745.2	5- 10	50.32	68.28	13.13
15	593.6	529.6	485.3	473.9	503.6	571.0	628.0	632.6	10- 15	72.27	140.5	26.7,26.7
20	441.6	400.3	369.0	359.2	386.1	441.6	479.0	475.4	15- 20	79.64	220.2	41.8,41.8
25	298.1	279.2	266.7	259.2	276.6	310.3	324.7	320.9	20- 25	73.75	293.9	55.8,55.8
30	189.9	185.8	182.9	180.1	188.8	203.9	207.4	204.6	25- 30	60.28	354.2	67.3,67.3
35	120.7	121.1	121.4	122.7	123.9	127.4	130.1	129.0	30- 35	45.86	400.1	76.76
40	78.54	77.83	73.01	74.61	70.55	76.17	81.39	81.00	35- 40	32.68	432.8	82.2,82.2
45	54.60	52.48	51.19	50.83	51.16	52.16	56.05	55.67	40- 45	23.35	456.1	86.6,86.6
50	28.38	27.49	26.76	26.19	25.66	26.34	28.15	28.91	45- 50	16.26	472.4	89.7,89.7
55	21.04	20.34	19.91	19.75	19.29	19.38	19.85	21.32	50- 55	10.06	482.4	91.6,91.6
60	16.14	15.54	14.67	15.07	14.64	14.43	14.60	16.35	55- 60	8.069	490.5	93.2,93.2
65	12.53	12.21	11.27	11.83	11.52	11.38	10.99	12.92	60- 65	6.503	497.0	94.4,94.4
70	8.726	8.478	7.916	8.016	7.901	7.858	7.555	8.894	65- 70	4.980	502.0	95.3,95.3
75	6.498	6.130	5.491	5.747	5.821	6.004	5.151	6.963	70- 75	3.671	505.7	96.96
80	4.150	3.657	3.014	3.385	3.862	4.265	2.954	4.522	75- 80	2.549	508.2	96.5,96.5
85	1.661	2.010	1.375	1.796	2.299	2.934	1.470	2.571	80- 85	1.513	509.7	96.8,96.8
90	1.286	1.529	1.289	1.470	1.686	2.654	1.648	2.409	85- 90	0.9812	510.7	97.97
95	1.306	1.770	1.312	1.585	1.559	2.160	1.534	2.071	90- 95	0.9720	511.7	97.2,97.2
100	1.358	2.304	1.364	1.836	1.453	1.742	1.436	1.703	95-100	0.8833	512.6	97.4,97.4
105	1.444	2.356	1.464	2.295	1.421	1.548	1.375	1.493	100-105	0.8715	513.4	97.5,97.5
110	1.530	2.362	1.554	2.564	1.464	1.454	1.410	1.433	105-110	0.8794	514.3	97.7,97.7
115	1.694	2.214	1.752	2.438	1.577	1.446	1.513	1.438	110-115	0.8632	515.2	97.9,97.9
120	1.832	2.074	1.913	2.268	1.743	1.502	1.657	1.494	115-120	0.8575	516.0	98.98
125	1.910	2.110	2.239	2.262	1.715	1.692	1.771	1.677	120-125	0.8467	516.9	98.2,98.2
130	2.197	2.392	2.635	2.482	2.064	1.971	2.209	1.942	125-130	0.9016	517.8	98.3,98.3
135	2.591	2.885	3.146	2.988	2.518	2.392	2.539	2.339	130-135	0.9844	518.8	98.5,98.5
140	3.137	3.284	3.986	3.433	3.167	2.893	3.281	2.765	135-140	1.110	519.9	98.7,98.7
145	3.736	3.878	4.198	3.986	3.789	3.461	3.504	3.304	140-145	1.173	521.0	99.99
150	4.230	4.443	4.563	4.529	4.236	4.046	3.963	3.894	145-150	1.166	522.2	99.2,99.2
155	4.955	5.074	5.304	5.139	5.057	4.741	4.739	4.531	150-155	1.148	523.4	99.4,99.4
160	5.506	5.608	5.599	5.482	5.394	5.318	5.232	5.138	155-160	1.078	524.4	99.6,99.6
165	5.662	5.526	5.496	5.299	5.300	5.296	5.485	5.362	160-165	0.8856	525.3	99.8,99.8
170	5.544	5.452	5.350	5.274	5.259	5.285	5.397	5.331	165-170	0.6339	526.0	99.9,99.9
175	5.555	5.569	5.403	5.428	5.360	5.449	5.442	5.477	170-175	0.3859	526.3	100,100
180	5.578	5.591	5.552	5.542	5.581	5.591	5.526	5.536	175-180	0.1314	526.5	100,100
DEG	LUMINOUS INTENSITY:cd									UNIT:lm		

Conical surface Flux(90deg): 456.11 lm

%lum = 86.6%
%lamp = 86.6%

Conical surface Flux(120deg): 490.5 lm

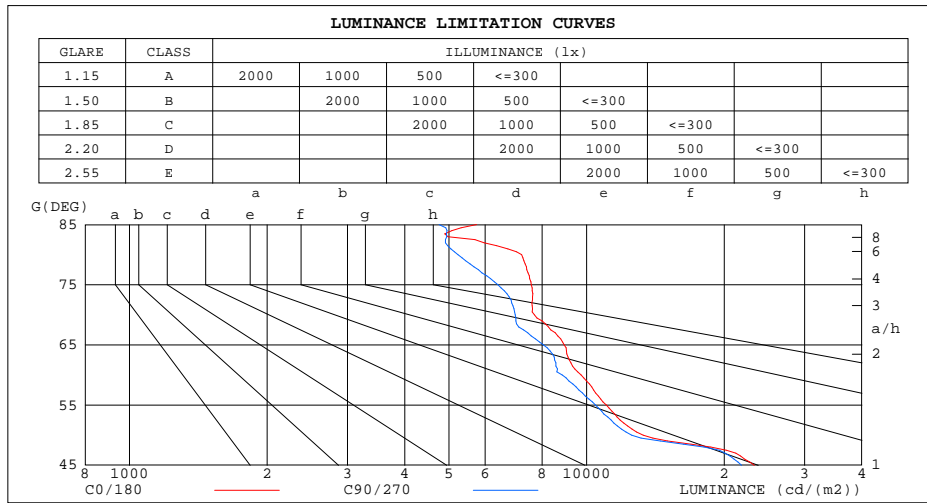
%lum = 93.2%
%lamp = 93.2%

C Range: 0 - 360DEG
C Interval: 10.0DEG
Test Speed: MEDIUM
Temperature:25.3DEG
Operators:Kevin
Test Date:2016-06-21

γ Range: 0 - 180DEG
γ Interval: 0.5DEG
Test System:EVERFINE GO-2000B_V1 SYSTEM V2.0.351
Humidity:65.0%
Test Distance:6.950m [K=1.0000]
Remarks:

LUMINANCE LIMITATION CURVES

Test:U:120.4V I:0.0684A P:8.176W PF:0.9929 Lamp Flux:580.469x1 lm		
NAME: 8821	TYPE:LED tirm	WEIGHT:
SPEC.:8W CRI90	DIM.:	SERIAL No.:1
MFR.: AOM-LITE	SUR.:φ65MM	Shielding Angle:



LUMINANCE cd/(m2)		
G(DEG)	C0/180	C90/270
85	5746	4759
80	7208	5235
75	7572	6397
70	7694	6980
65	8941	8040
60	9732	8851
55	11063	10466
50	13313	12556
45	23285	21832

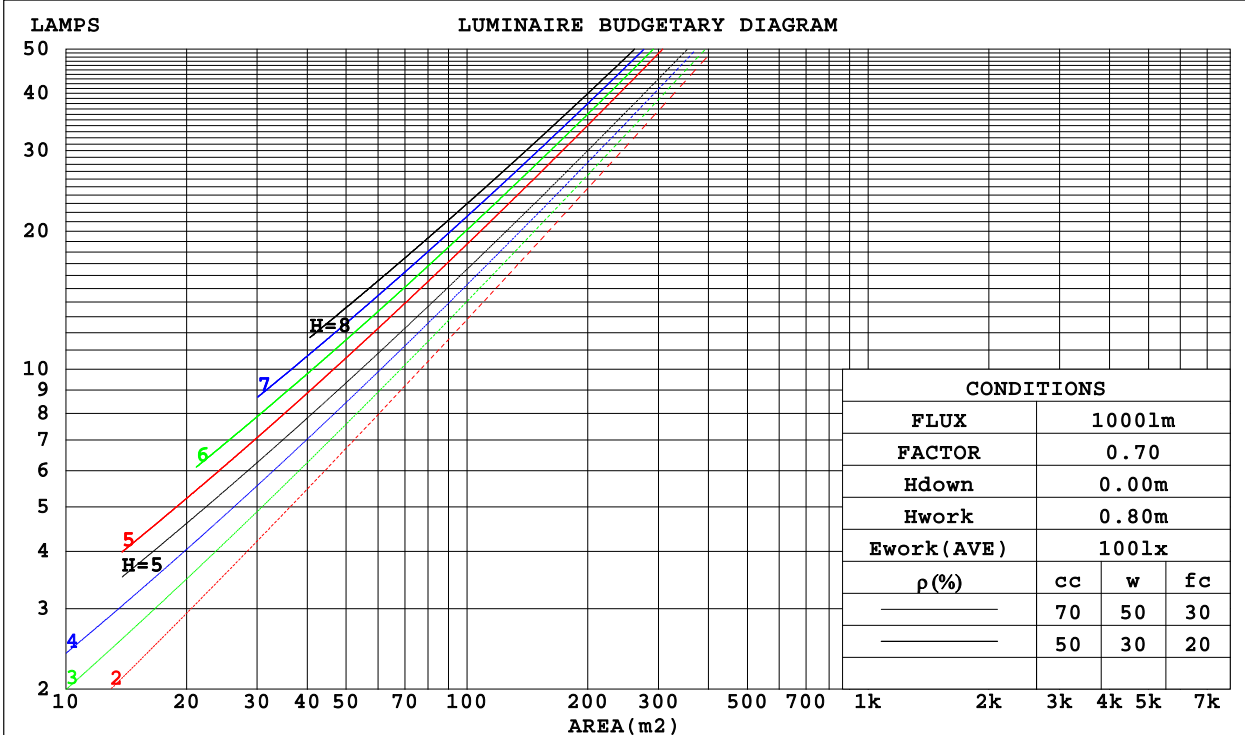
C Range: 0 - 360DEG
 C Interval: 10.0DEG
 Test Speed: MEDIUM
 Temperature:25.3DEG
 Operators:Kevin
 Test Date:2016-06-21

γ Range: 0 - 180DEG
 γ Interval: 0.5DEG
 Test System:EVERFINE GO-2000B_V1 SYSTEM V2.0.351
 Humidity:65.0%
 Test Distance:6.950m [K=1.0000]
 Remarks:

CU AND LUMINAIRE BUDGETARY ESTIMATE DIAGRAM

Test:U:120.4V I:0.0684A P:8.176W PF:0.9929 Lamp Flux:580.469x1 lm		
NAME: 8821	TYPE:LED tirm	WEIGHT:
SPEC.:8W CRI90	DIM.:	SERIAL No.:1
MFR.: AOM-LITE	SUR.:φ65MM	Shielding Angle:

ρ _{cc}	80%			70%			50%			30%			10%			0
ρ _w	50%	30%	10%	50%	30%	10%	50%	30%	10%	50%	30%	10%	50%	30%	10%	0
ρ _{fc}	20%			20%			20%			20%			20%			0
RCR	RCR:Room Cavity Ratio						Coefficients of Utilization(CU)									
0.0	1.18	1.18	1.18	1.15	1.15	1.15	1.09	1.09	1.09	1.04	1.04	1.04	.99	.99	.99	.97
1.0	1.09	1.06	1.04	1.07	1.04	1.02	1.02	1.00	.98	.98	.96	.95	.94	.93	.92	.90
2.0	1.01	.97	.93	.99	.95	.92	.95	.92	.89	.92	.89	.87	.88	.86	.85	.83
3.0	.94	.88	.84	.92	.87	.83	.89	.85	.82	.86	.83	.80	.83	.81	.78	.77
4.0	.87	.81	.77	.86	.81	.76	.83	.79	.75	.81	.77	.74	.79	.75	.73	.71
5.0	.82	.76	.71	.81	.75	.71	.78	.73	.70	.76	.72	.69	.74	.71	.68	.66
6.0	.77	.70	.66	.76	.70	.66	.74	.69	.65	.72	.68	.64	.71	.67	.64	.62
7.0	.72	.66	.62	.71	.66	.61	.70	.65	.61	.68	.64	.60	.67	.63	.60	.58
8.0	.68	.62	.58	.67	.62	.58	.66	.61	.57	.65	.60	.57	.64	.60	.56	.55
9.0	.65	.59	.55	.64	.58	.54	.63	.58	.54	.62	.57	.54	.61	.56	.53	.52
10.0	.61	.55	.52	.61	.55	.51	.60	.55	.51	.59	.54	.51	.58	.54	.51	.49



C Range: 0 - 360DEG
 C Interval: 10.0DEG
 Test Speed: MEDIUM
 Temperature:25.3DEG
 Operators:Kevin
 Test Date:2016-06-21

γ Range: 0 - 180DEG
 γ Interval: 0.5DEG
 Test System:EVERFINE GO-2000B_V1 SYSTEM V2.0.351
 Humidity:65.0%
 Test Distance:6.950m [K=1.0000]
 Remarks:

WEC AND CCEC

Test:U:120.4V I:0.0684A P:8.176W PF:0.9929 Lamp Flux:580.469xl lm		
NAME: 8821	TYPE:LED tirm	WEIGHT:
SPEC.:8W CRI90	DIM.:	SERIAL No.:1
MFR.: AOM-LITE	SUR.:φ65MM	Shielding Angle:

ρcc	80%			70%			50%			30%			10%			0
ρw	50%	30%	10%	50%	30%	10%	50%	30%	10%	50%	30%	10%	50%	30%	10%	0
ρfc	20%			20%			20%			20%			20%			0
RCR	RCR:Room Cavity Ratio						Wall Exitance Coefficients(WEC)									
0.0																
1.0	.195	.111	.035	.188	.107	.034	.173	.099	.032	.160	.092	.030	.148	.086	.028	
2.0	.185	.101	.031	.178	.098	.030	.166	.092	.029	.154	.087	.027	.144	.081	.026	
3.0	.174	.093	.028	.168	.090	.027	.158	.085	.026	.148	.081	.025	.139	.077	.024	
4.0	.164	.085	.025	.159	.083	.025	.150	.079	.024	.141	.076	.023	.133	.072	.022	
5.0	.155	.079	.023	.150	.077	.022	.142	.074	.022	.134	.071	.021	.127	.068	.020	
6.0	.146	.073	.021	.142	.072	.021	.135	.069	.020	.128	.067	.020	.122	.064	.019	
7.0	.139	.069	.019	.135	.067	.019	.129	.065	.019	.123	.063	.018	.117	.061	.018	
8.0	.132	.064	.018	.129	.063	.018	.123	.061	.018	.117	.060	.017	.112	.058	.017	
9.0	.126	.061	.017	.123	.060	.017	.118	.058	.016	.113	.056	.016	.108	.055	.016	
10.0	.120	.058	.016	.117	.057	.016	.113	.055	.016	.108	.054	.015	.104	.052	.015	

ρcc	80%			70%			50%			30%			10%			0
ρw	50%	30%	10%	50%	30%	10%	50%	30%	10%	50%	30%	10%	50%	30%	10%	0
ρfc	20%			20%			20%			20%			20%			0
RCR	RCR:Room Cavity Ratio						Ceiling Cavity Exitance Coefficients(CCEC)									
0.0	.213	.213	.213	.182	.182	.182	.124	.124	.124	.071	.071	.071	.023	.023	.023	
1.0	.195	.180	.166	.167	.155	.143	.114	.106	.099	.066	.062	.058	.021	.020	.019	
2.0	.181	.156	.134	.155	.134	.116	.106	.093	.081	.061	.054	.047	.020	.017	.015	
3.0	.169	.137	.111	.145	.118	.096	.100	.082	.068	.058	.048	.040	.018	.016	.013	
4.0	.159	.122	.094	.137	.106	.082	.094	.074	.058	.054	.043	.034	.017	.014	.011	
5.0	.151	.111	.082	.129	.096	.071	.089	.067	.050	.052	.039	.030	.017	.013	.010	
6.0	.143	.102	.072	.123	.088	.063	.085	.062	.045	.049	.036	.027	.016	.012	.009	
7.0	.136	.094	.065	.117	.082	.057	.081	.057	.040	.047	.034	.024	.015	.011	.008	
8.0	.130	.088	.059	.112	.077	.052	.078	.054	.037	.045	.032	.022	.015	.010	.007	
9.0	.125	.083	.055	.108	.072	.048	.075	.051	.034	.044	.030	.020	.014	.010	.007	
10.0	.120	.079	.051	.104	.068	.044	.072	.048	.032	.042	.028	.019	.014	.009	.006	

C Range: 0 - 360DEG
 C Interval: 10.0DEG
 Test Speed: MEDIUM
 Temperature:25.3DEG
 Operators:Kevin
 Test Date:2016-06-21

γ Range: 0 - 180DEG
 γ Interval: 0.5DEG
 Test System:EVERFINE GO-2000B_V1 SYSTEM V2.0.351
 Humidity:65.0%
 Test Distance:6.950m [K=1.0000]
 Remarks:

UGR(Unified Glare Rating) Table

Test:U:120.4V I:0.0684A P:8.176W PF:0.9929 Lamp Flux:580.469x1 lm										
NAME: 8821					TYPE:LED tirm			WEIGHT:		
SPEC.:8W CRI90					DIM.:			SERIAL No.:1		
MFR.: AOM-LITE					SUR.:φ65MM			Shielding Angle:		
ceiling/cavity	0.7	0.7	0.5	0.5	0.3	0.7	0.7	0.5	0.5	0.3
walls	0.5	0.3	0.5	0.3	0.3	0.5	0.3	0.5	0.3	0.3
working plane	0.2	0.2	0.2	0.2	0.2	0.2	0.2	0.2	0.2	0.2
Room dimensions	Viewed crosswise					Viewed endwise				
x = 2H y = 2H	18.4	19.4	18.7	19.6	19.8	18.2	19.2	18.5	19.4	19.6
3H	18.9	19.8	19.2	20.1	20.3	18.6	19.5	18.9	19.8	20.0
4H	19.2	20.0	19.5	20.3	20.6	18.8	19.6	19.1	19.9	20.2
6H	19.4	20.2	19.7	20.5	20.8	18.9	19.7	19.3	20.0	20.3
8H	19.4	20.2	19.8	20.5	20.8	18.9	19.7	19.3	20.0	20.3
12H	19.4	20.2	19.8	20.5	20.8	18.9	19.7	19.3	20.0	20.3
4H 2H	18.5	19.3	18.8	19.6	19.9	18.3	19.2	18.6	19.4	19.7
3H	19.2	19.9	19.5	20.2	20.6	18.9	19.6	19.3	19.9	20.3
4H	19.5	20.2	19.9	20.6	20.9	19.2	19.9	19.6	20.2	20.6
6H	19.9	20.5	20.3	20.9	21.3	19.4	20.0	19.8	20.4	20.8
8H	20.0	20.5	20.4	20.9	21.4	19.4	20.0	19.9	20.4	20.8
12H	20.0	20.5	20.5	21.0	21.4	19.5	20.0	19.9	20.4	20.9
8H 4H	19.6	20.2	20.1	20.6	21.0	19.3	19.8	19.7	20.2	20.7
6H	20.1	20.5	20.5	21.0	21.4	19.6	20.0	20.0	20.5	20.9
8H	20.2	20.6	20.7	21.1	21.6	19.7	20.1	20.2	20.5	21.0
12H	20.4	20.7	20.9	21.2	21.7	19.8	20.1	20.3	20.6	21.1
12H 4H	19.6	20.1	20.0	20.5	21.0	19.3	19.8	19.7	20.2	20.6
6H	20.1	20.5	20.6	20.9	21.4	19.6	20.0	20.1	20.5	21.0
8H	20.3	20.6	20.8	21.1	21.6	19.7	20.1	20.2	20.6	21.1
Variations with the observer position at spacings:										
S = 1.0H	+ 0.9 / - 1.1					+ 1.0 / - 1.4				
1.5H	+ 1.5 / - 1.2					+ 1.7 / - 1.3				
2.0H	+ 2.1 / - 0.8					+ 2.2 / - 1.1				

CIE Pub.117 Corrected 526.5 lm Total Lamp Luminous Flux.(8log(F/F0) = -2.2)

C Range: 0 - 360DEG
 C Interval: 10.0DEG
 Test Speed: MEDIUM
 Temperature:25.3DEG
 Operators:Kevin
 Test Date:2016-06-21

γ Range: 0 - 180DEG
 γ Interval: 0.5DEG
 Test System:EVERFINE GO-2000B_V1 SYSTEM V2.0.351
 Humidity:65.0%
 Test Distance:6.950m [K=1.0000]
 Remarks:

UTILIZATION FACTORS TABLE

Test:U:120.4V I:0.0684A P:8.176W PF:0.9929 Lamp Flux:580.469x1 lm		
NAME: 8821	TYPE:LED tirm	WEIGHT:
SPEC.:8W CRI90	DIM.:	SERIAL No.:1
MFR.: AOM-LITE	SUR.:φ65MM	Shielding Angle:

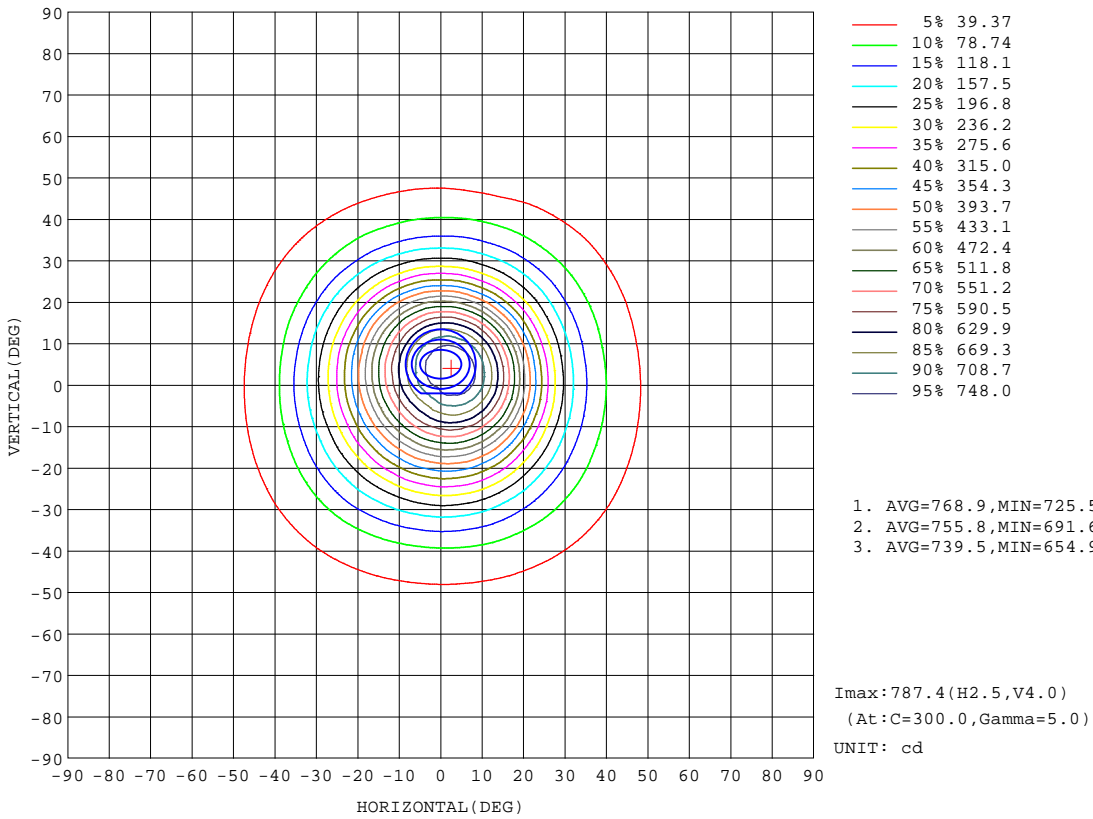
REFLECTANCE										
Ceiling	0.8	0.8	0.8	0.7	0.7	0.7	0.5	0.5	0.5	0
Walls	0.7	0.5	0.3	0.7	0.5	0.3	0.7	0.5	0.3	0
Working plane	0.2	0.2	0.2	0.2	0.2	0.2	0.2	0.2	0.2	0
ROOM INDEX	UTILIZATION FACTORS(PERCENT) k(RI) x RCR = 5									
k = 0.60	80	73	69	80	73	69	79	72	68	64
0.80	88	81	77	88	81	77	86	80	76	72
1.00	94	87	83	93	86	82	91	86	82	77
1.25	98	92	88	97	91	87	95	90	86	81
1.50	102	96	92	100	95	91	97	93	90	84
2.00	105	100	96	103	99	95	100	96	93	87
2.50	107	103	99	105	101	98	102	98	96	89
3.00	109	105	102	107	103	100	103	100	98	90
4.00	111	108	105	109	106	104	105	103	101	92
5.00	113	110	108	110	108	106	106	104	102	94
ROOM INDEX	UF(total)									Direct
According to DIN EN 13032-2 2004			Suspended				SHRNOM = 1.25			

C Range: 0 - 360DEG
 C Interval: 10.0DEG
 Test Speed: MEDIUM
 Temperature:25.3DEG
 Operators:Kevin
 Test Date:2016-06-21

γ Range: 0 - 180DEG
 γ Interval: 0.5DEG
 Test System:EVERFINE GO-2000B_V1 SYSTEM V2.0.351
 Humidity:65.0%
 Test Distance:6.950m [K=1.0000]
 Remarks:

ISOCANDELA DIAGRAM

Test:U:120.4V I:0.0684A P:8.176W PF:0.9929 Lamp Flux:580.469x1 lm		
NAME: 8821	TYPE:LED tirm	WEIGHT:
SPEC.:8W CRI90	DIM.:	SERIAL No.:1
MFR.: AOM-LITE	SUR.:φ65MM	Shielding Angle:

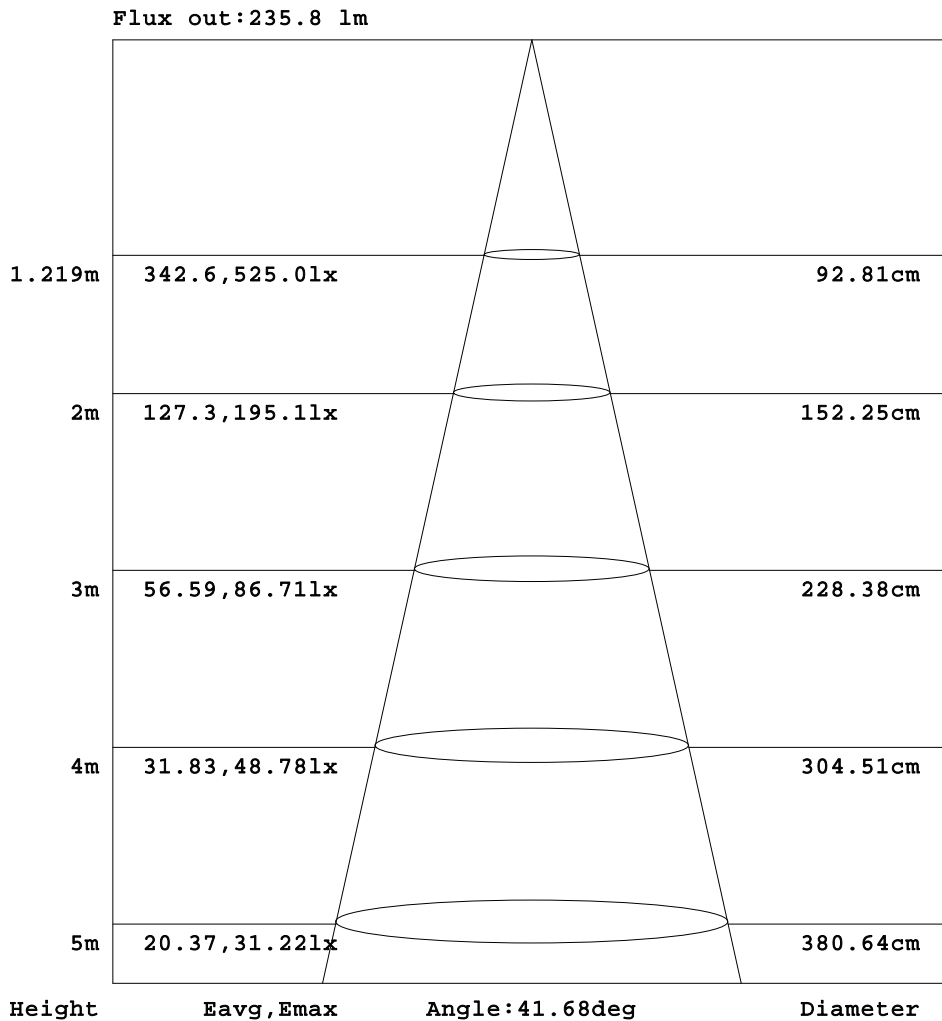


C Range: 0 - 360DEG
 C Interval: 10.0DEG
 Test Speed: MEDIUM
 Temperature:25.3DEG
 Operators:Kevin
 Test Date:2016-06-21

γ Range: 0 - 180DEG
 γ Interval: 0.5DEG
 Test System:EVERFINE GO-2000B_V1 SYSTEM V2.0.351
 Humidity:65.0%
 Test Distance:6.950m [K=1.0000]
 Remarks:

AAI Figure

Test:U:120.4V I:0.0684A P:8.176W PF:0.9929 Lamp Flux:580.469x1 lm		
NAME: 8821	TYPE:LED tirm	WEIGHT:
SPEC.:8W CRI90	DIM.:	SERIAL No.:1
MFR.: AOM-LITE	SUR.:φ65MM	Shielding Angle:



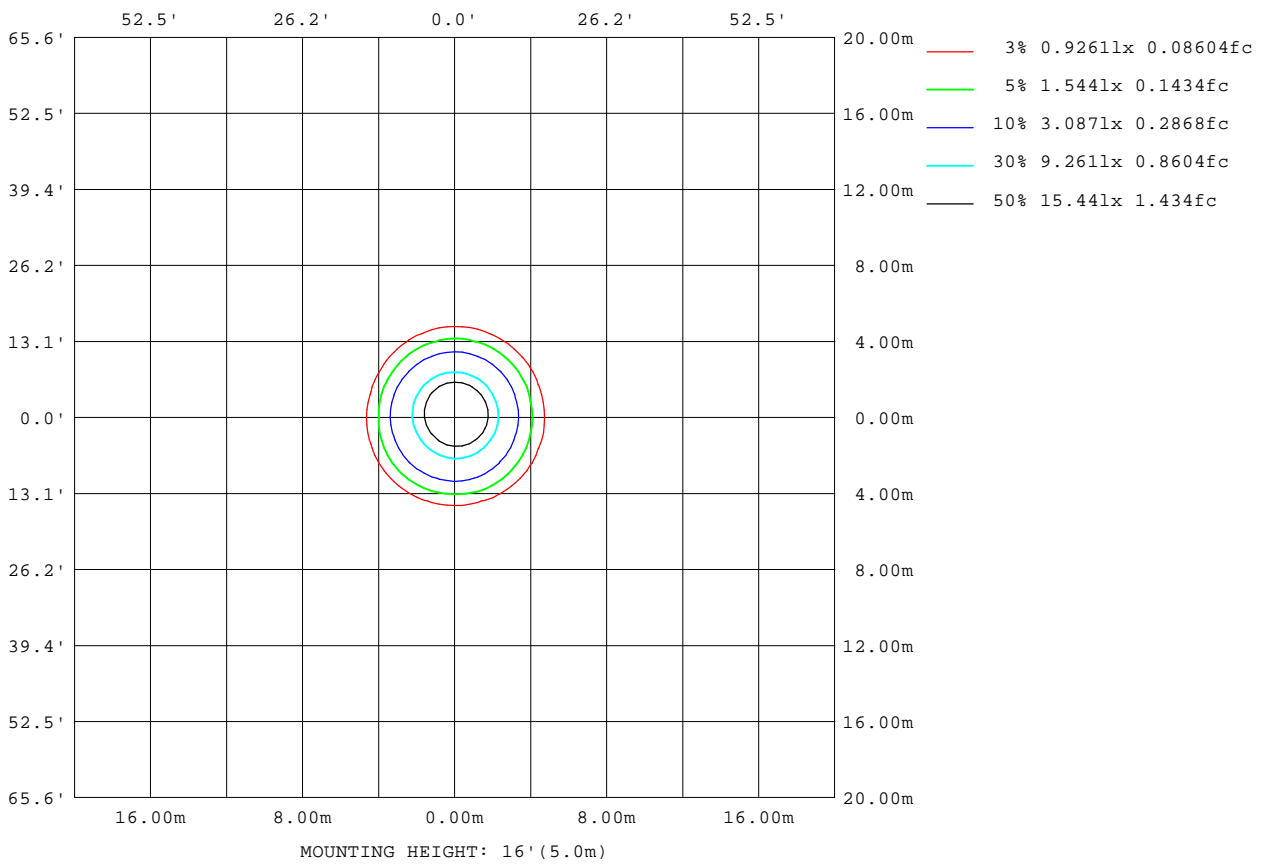
Note:The Curves indicate the illuminated area and the average illumination when the luminaire is at different distance.

C Range: 0 - 360DEG
 C Interval: 10.0DEG
 Test Speed: MEDIUM
 Temperature:25.3DEG
 Operators:Kevin
 Test Date:2016-06-21

γ Range: 0 - 180DEG
 γ Interval: 0.5DEG
 Test System:EVERFINE GO-2000B_V1 SYSTEM V2.0.351
 Humidity:65.0%
 Test Distance:6.950m [K=1.0000]
 Remarks:

ISOLUX DIAGRAM

Test:U:120.4V I:0.0684A P:8.176W PF:0.9929 Lamp Flux:580.469x1 lm		
NAME: 8821	TYPE:LED tirm	WEIGHT:
SPEC.:8W CRI90	DIM.:	SERIAL No.:1
MFR.: AOM-LITE	SUR.:φ65MM	Shielding Angle:



C Range: 0 - 360DEG
 C Interval: 10.0DEG
 Test Speed: MEDIUM
 Temperature:25.3DEG
 Operators:Kevin
 Test Date:2016-06-21

γ Range: 0 - 180DEG
 γ Interval: 0.5DEG
 Test System:EVERFINE GO-2000B_V1 SYSTEM V2.0.351
 Humidity:65.0%
 Test Distance:6.950m [K=1.0000]
 Remarks:

LED Avg.L Report

Test:U:120.4V I:0.0684A P:8.176W PF:0.9929 Lamp Flux:580.469x1 lm		
NAME: 8821	TYPE:LED tirm	WEIGHT:
SPEC.:8W CRI90	DIM.:	SERIAL No.:1
MFR.: AOM-LITE	SUR.:φ65MM	Shielding Angle:

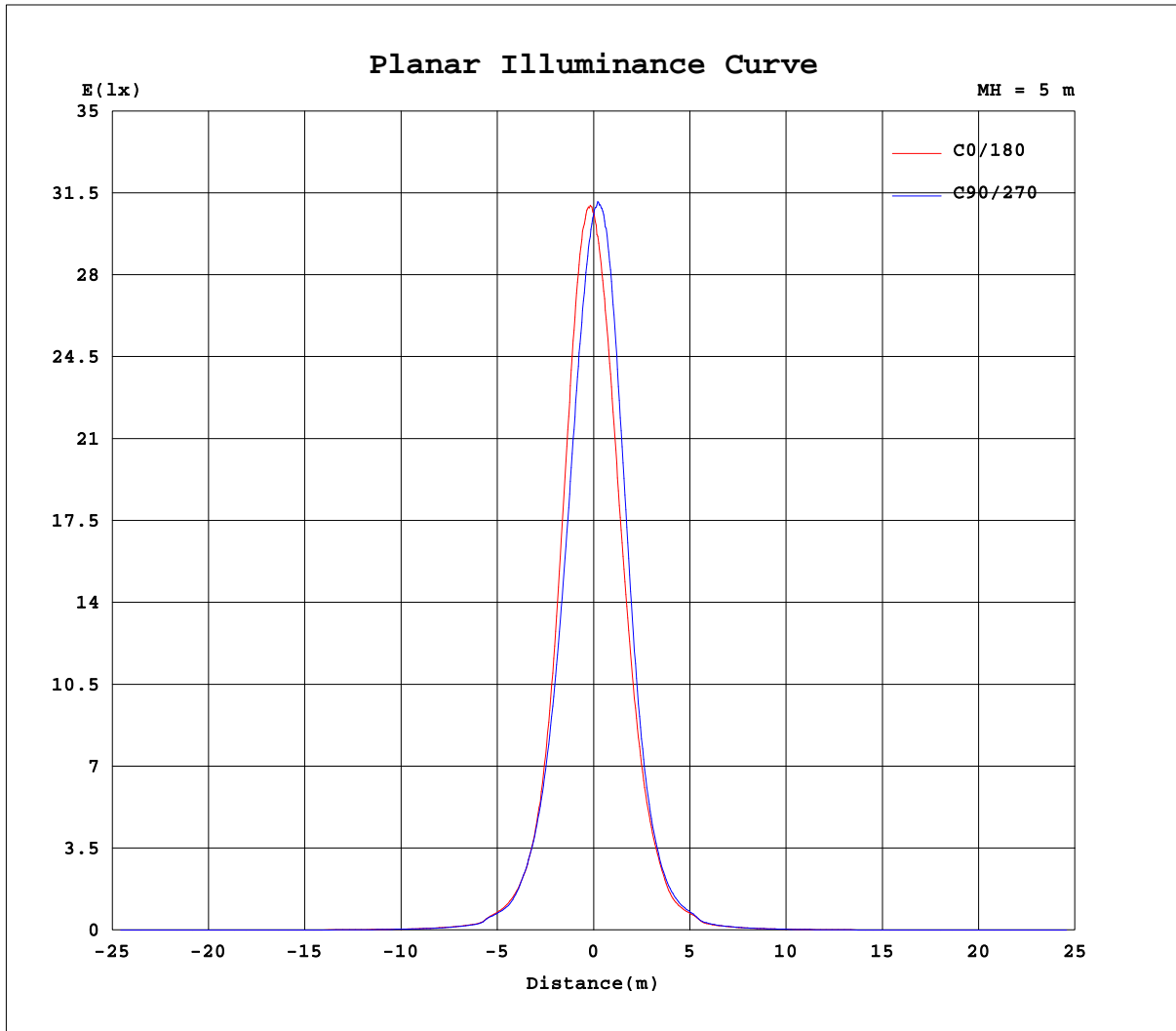
AvgL	cd/m2
L_0~180(65)av	8580
L_0~180(75)av	7177
L_0~180(85)av	6850
L_90~270(65)av	7939
L_90~270(75)av	6200
L_90~270(85)av	4922
L_45(65)av	8644
L_45(75)av	7276
L_45(85)av	8172

Standard: GB/T 29293-2012

C Range: 0 - 360DEG
 C Interval: 10.0DEG
 Test Speed: MEDIUM
 Temperature:25.3DEG
 Operators:Kevin
 Test Date:2016-06-21

γ Range: 0 - 180DEG
 γ Interval: 0.5DEG
 Test System:EVERFINE GO-2000B_V1 SYSTEM V2.0.351
 Humidity:65.0%
 Test Distance:6.950m [K=1.0000]
 Remarks:

Planar Illuminance Curve



C Range: 0 - 360DEG
 C Interval: 10.0DEG
 Test Speed: MEDIUM
 Temperature: 25.3DEG
 Operators: Kevin
 Test Date: 2016-06-21

γ Range: 0 - 180DEG
 γ Interval: 0.5DEG
 Test System: EVERFINE GO-2000B_V1 SYSTEM V2.0.351
 Humidity: 65.0%
 Test Distance: 6.950m [K=1.0000]
 Remarks:

LUMINOUS DISTRIBUTION INTENSITY DATA

Test:U:120.4V I:0.0684A P:8.176W PF:0.9929 Lamp Flux:580.469xl lm		
NAME: 8821	TYPE:LED tirm	WEIGHT:
SPEC.:8W CRI90	DIM.:	SERIAL No.:1
MFR.: AOM-LITE	SUR.:φ65MM	Shielding Angle:

Table--1

UNIT: cd

C(DEG) γ (DEG)	0	10	20	30	40	50	60	70	80	90	100	110	120	130	140	150	160	170	180
0	767	751	765	765	766	767	766	763	763	764	762	761	758	760	758	759	760	766	767
5	769	762	754	747	737	730	721	712	706	702	695	690	684	686	685	693	696	705	711
10	713	698	685	672	655	645	632	623	613	603	595	593	590	590	589	595	599	611	622
15	594	580	565	551	535	524	513	502	493	485	480	476	472	473	474	479	485	494	504
20	442	434	422	412	404	397	388	382	376	369	363	361	359	359	359	365	369	376	386
25	298	295	287	279	280	279	275	274	269	267	262	260	258	259	259	261	264	270	277
30	190	189	186	186	186	186	186	186	183	183	180	180	178	180	180	180	181	185	189
35	121	120	120	120	120	122	122	123	122	121	120	121	121	123	123	122	121	122	124
40	78.5	78.1	77.5	78.2	77.9	77.8	76.5	76.4	74.4	73.0	72.7	73.1	74.2	74.8	74.4	73.6	71.3	71.3	70.5
45	54.6	53.9	53.8	53.4	52.7	52.3	51.2	51.2	50.9	51.2	51.1	50.8	51.0	51.0	50.6	51.2	50.5	51.4	51.2
50	28.4	28.1	27.9	27.8	27.6	27.4	27.0	27.0	26.7	26.8	26.5	26.4	26.4	26.3	26.1	26.1	25.8	25.7	25.7
55	21.0	20.7	20.4	20.5	20.4	20.3	20.0	19.9	19.7	19.9	19.8	19.8	19.9	19.9	19.6	19.6	19.4	19.4	19.3
60	16.1	15.9	15.7	15.8	15.6	15.5	15.2	15.0	14.8	14.7	14.7	14.7	14.9	15.1	15.0	15.0	14.9	14.8	14.6
65	12.5	12.5	12.5	12.6	12.3	12.1	11.8	11.6	11.3	11.3	11.2	11.4	11.5	11.8	11.9	11.9	11.7	11.7	11.5
70	8.73	8.76	8.71	8.77	8.59	8.36	8.17	8.07	7.95	7.92	7.84	7.83	7.81	7.99	8.04	8.11	8.08	8.06	7.90
75	6.50	6.53	6.41	6.34	6.24	6.02	5.82	5.70	5.54	5.49	5.47	5.54	5.59	5.79	5.71	5.77	5.82	5.89	5.82
80	4.15	4.13	3.98	3.91	3.79	3.52	3.28	3.16	3.09	3.01	3.04	3.11	3.16	3.37	3.40	3.51	3.61	3.74	3.86
85	1.66	1.94	2.22	2.19	2.18	1.84	1.59	1.46	1.41	1.38	1.43	1.50	1.58	1.80	1.79	1.90	1.99	2.12	2.30
90	1.29	1.38	1.40	1.54	1.66	1.40	1.35	1.31	1.32	1.29	1.35	1.39	1.45	1.54	1.40	1.39	1.35	1.34	1.69
95	1.31	1.41	1.45	1.70	2.04	1.50	1.42	1.38	1.37	1.31	1.40	1.44	1.54	1.71	1.46	1.42	1.38	1.38	1.56
100	1.36	1.48	1.54	1.97	2.89	1.72	1.52	1.46	1.43	1.36	1.47	1.53	1.73	2.09	1.58	1.49	1.44	1.43	1.45
105	1.44	1.59	1.66	2.05	2.88	1.83	1.66	1.61	1.55	1.46	1.62	1.73	2.03	2.86	1.73	1.69	1.74	1.62	1.42
110	1.53	1.70	1.78	2.09	2.83	1.90	1.71	1.69	1.58	1.55	1.69	1.78	2.11	3.29	1.84	1.74	1.62	1.61	1.46
115	1.69	1.82	1.89	2.09	2.55	1.88	1.80	1.82	1.79	1.75	1.83	1.87	2.14	3.08	1.79	1.83	1.82	1.81	1.58
120	1.83	1.91	1.92	2.02	2.29	1.86	1.86	2.00	1.93	1.91	1.94	1.99	2.13	2.72	1.81	1.81	1.88	1.92	1.74
125	1.91	1.94	1.98	2.07	2.22	2.00	2.08	2.28	2.23	2.24	2.25	2.26	2.33	2.53	2.00	1.95	1.96	1.91	1.72
130	2.20	2.24	2.29	2.35	2.41	2.38	2.38	2.56	2.56	2.64	2.60	2.59	2.62	2.60	2.37	2.35	2.29	2.24	2.06
135	2.59	2.63	2.67	2.79	2.79	2.98	3.21	3.20	3.15	3.15	3.17	3.20	3.36	3.10	2.87	2.76	2.74	2.71	2.52
140	3.14	3.18	3.26	3.30	3.27	3.30	3.63	3.96	3.99	3.99	3.99	3.93	3.81	3.49	3.38	3.38	3.40	3.40	3.17
145	3.74	3.75	3.77	3.80	3.87	3.89	3.94	3.99	4.14	4.20	4.17	4.09	4.18	4.02	3.95	3.90	3.89	3.92	3.79
150	4.23	4.27	4.31	4.37	4.43	4.46	4.50	4.53	4.56	4.56	4.57	4.61	4.76	4.57	4.49	4.43	4.41	4.40	4.24
155	4.95	4.83	4.80	5.00	5.07	5.08	5.14	5.14	5.15	5.30	5.10	5.09	5.21	5.22	5.06	4.93	5.10	5.04	5.06
160	5.51	5.46	5.33	5.43	5.54	5.68	5.54	5.50	5.57	5.60	5.46	5.39	5.46	5.51	5.45	5.29	5.29	5.44	5.39
165	5.66	5.67	5.43	5.39	5.54	5.51	5.43	5.41	5.43	5.50	5.35	5.32	5.26	5.30	5.30	5.25	5.27	5.32	5.30
170	5.54	5.53	5.51	5.47	5.45	5.46	5.43	5.42	5.39	5.35	5.32	5.27	5.24	5.25	5.30	5.30	5.34	5.33	5.26
175	5.55	5.53	5.54	5.54	5.56	5.58	5.54	5.50	5.45	5.40	5.43	5.43	5.38	5.42	5.44	5.43	5.41	5.39	5.36
180	5.58	5.56	5.58	5.58	5.59	5.60	5.56	5.54	5.53	5.55	5.53	5.52	5.52	5.54	5.55	5.51	5.50	5.52	5.58

C Range: 0 - 360DEG
 C Interval: 10.0DEG
 Test Speed: MEDIUM
 Temperature:25.3DEG
 Operators:Kevin
 Test Date:2016-06-21

γ Range: 0 - 180DEG
 γ Interval: 0.5DEG
 Test System:EVERFINE GO-2000B_V1 SYSTEM V2.0.351
 Humidity:65.0%
 Test Distance:6.950m [K=1.0000]
 Remarks:

LUMINOUS DISTRIBUTION INTENSITY DATA

Test:U:120.4V I:0.0684A P:8.176W PF:0.9929 Lamp Flux:580.469xl lm		
NAME: 8821	TYPE:LED tirm	WEIGHT:
SPEC.:8W CRI90	DIM.:	SERIAL No.:1
MFR.: AOM-LITE	SUR.:φ65MM	Shielding Angle:

Table--2

UNIT: cd

C(DEG) γ (DEG)	190	200	210	220	230	240	250	260	270	280	290	300	310	320	330	340	350		
0	751	765	765	766	767	766	763	763	764	762	761	758	760	758	759	760	766		
5	716	726	735	745	755	761	771	777	780	786	785	788	786	784	782	778	777		
10	633	647	658	675	689	705	719	729	738	744	747	747	747	743	736	731	720		
15	517	532	546	563	579	596	610	622	628	634	636	638	634	631	621	613	601		
20	397	409	420	437	447	459	469	478	479	483	483	483	476	475	466	459	446		
25	282	291	300	307	313	321	323	326	325	328	324	326	322	319	312	308	302		
30	192	196	199	203	204	208	208	208	207	209	207	209	206	203	198	196	192		
35	124	125	126	127	127	129	129	131	130	131	131	131	130	128	126	123	121		
40	70.8	72.5	73.6	75.2	77.1	79.1	79.3	80.8	81.4	82.2	81.8	82.1	81.0	80.9	79.8	79.1	77.8		
45	51.0	50.7	50.9	51.8	52.6	54.0	54.8	56.1	56.1	56.1	55.6	56.2	55.5	55.8	54.9	54.3	52.6		
50	25.3	25.5	25.7	26.0	26.7	27.0	27.3	27.9	28.1	27.8	27.6	28.1	28.7	29.1	28.9	28.7	28.3		
55	19.0	19.0	19.0	19.2	19.5	19.5	19.5	20.2	19.9	20.0	20.0	20.4	21.1	21.6	21.6	21.3	21.0		
60	14.5	14.4	14.3	14.4	14.5	14.4	14.3	14.5	14.6	14.7	14.9	15.2	16.0	16.7	16.6	16.4	16.0		
65	11.5	11.5	11.4	11.3	11.4	11.2	10.9	10.8	11.0	11.0	11.4	11.8	12.5	13.3	12.9	12.7	12.5		
70	7.88	7.88	7.77	7.71	8.01	7.67	7.42	7.42	7.56	7.85	8.00	8.18	8.49	9.30	8.87	8.65	8.53		
75	5.79	5.73	5.66	5.69	6.32	5.74	5.35	5.25	5.15	5.44	5.63	5.88	6.25	7.67	6.75	6.42	6.45		
80	3.90	3.78	3.72	3.74	4.79	3.83	3.35	3.27	2.95	3.22	3.34	3.53	3.93	5.12	4.42	4.22	4.29		
85	2.42	2.24	2.20	2.25	3.62	2.51	1.86	1.78	1.47	1.65	1.66	1.82	2.07	3.07	2.65	2.49	2.51		
90	1.97	1.94	1.97	2.04	3.27	2.61	2.05	2.01	1.65	2.00	1.97	2.05	2.08	2.74	2.35	2.05	2.04		
95	1.73	1.66	1.71	1.77	2.55	2.25	1.80	1.77	1.53	1.80	1.69	1.76	1.83	2.32	2.07	1.81	1.78		
100	1.52	1.49	1.53	1.56	1.93	1.83	1.60	1.57	1.44	1.50	1.46	1.51	1.54	1.86	1.73	1.55	1.53		
105	1.43	1.57	1.48	1.46	1.63	1.64	1.52	1.47	1.38	1.40	1.39	1.42	1.43	1.56	1.54	1.46	1.44		
110	1.44	2.15	1.48	1.45	1.46	1.54	1.50	1.48	1.41	1.39	1.40	1.42	1.38	1.49	1.50	1.46	1.44		
115	1.53	1.57	1.53	1.42	1.47	1.57	1.56	1.56	1.51	1.48	1.47	1.46	1.39	1.48	1.54	1.52	1.52		
120	1.68	1.63	1.53	1.48	1.52	1.57	1.61	1.68	1.66	1.63	1.56	1.48	1.49	1.50	1.60	1.64	1.65		
125	1.69	1.67	1.68	1.68	1.71	1.83	1.90	1.83	1.77	1.72	1.77	1.70	1.67	1.68	1.75	1.68	1.67		
130	2.03	1.99	1.98	1.97	1.97	2.11	2.15	2.22	2.21	2.19	2.04	1.95	1.93	1.95	1.94	1.97	1.96		
135	2.47	2.43	2.41	2.38	2.40	2.75	2.66	2.62	2.54	2.55	2.54	2.41	2.38	2.30	2.34	2.37	2.36		
140	3.18	3.05	2.98	2.90	2.88	2.99	3.29	3.32	3.28	3.25	3.14	2.91	2.76	2.77	2.82	2.86	2.88		
145	3.68	3.56	3.53	3.47	3.45	3.41	3.48	3.49	3.50	3.44	3.35	3.30	3.30	3.31	3.34	3.41	3.46		
150	4.20	4.14	4.11	4.06	4.03	4.01	4.01	3.98	3.96	3.94	3.90	3.88	3.88	3.90	3.93	3.99	4.02		
155	4.87	4.70	4.69	4.68	4.80	4.72	4.58	4.66	4.74	4.64	4.59	4.51	4.50	4.56	4.57	4.60	4.69		
160	5.32	5.19	5.15	5.30	5.33	5.17	5.02	5.18	5.23	5.09	5.14	5.13	5.14	5.13	5.01	5.08	5.26		
165	5.21	5.19	5.22	5.33	5.27	5.21	5.25	5.33	5.49	5.34	5.27	5.39	5.40	5.32	5.21	5.24	5.39		
170	5.29	5.31	5.31	5.29	5.28	5.30	5.32	5.37	5.40	5.43	5.40	5.38	5.34	5.32	5.35	5.39	5.44		
175	5.37	5.41	5.43	5.46	5.44	5.42	5.43	5.45	5.44	5.48	5.49	5.50	5.49	5.46	5.46	5.45	5.50		
180	5.54	5.58	5.57	5.60	5.58	5.56	5.54	5.55	5.53	5.54	5.51	5.51	5.54	5.53	5.51	5.49	5.53		

C Range: 0 - 360DEG
 C Interval: 10.0DEG
 Test Speed: MEDIUM
 Temperature:25.3DEG
 Operators:Kevin
 Test Date:2016-06-21

γ Range: 0 - 180DEG
 γ Interval: 0.5DEG
 Test System:EVERFINE GO-2000B_V1 SYSTEM V2.0.351
 Humidity:65.0%
 Test Distance:6.950m [K=1.0000]
 Remarks: