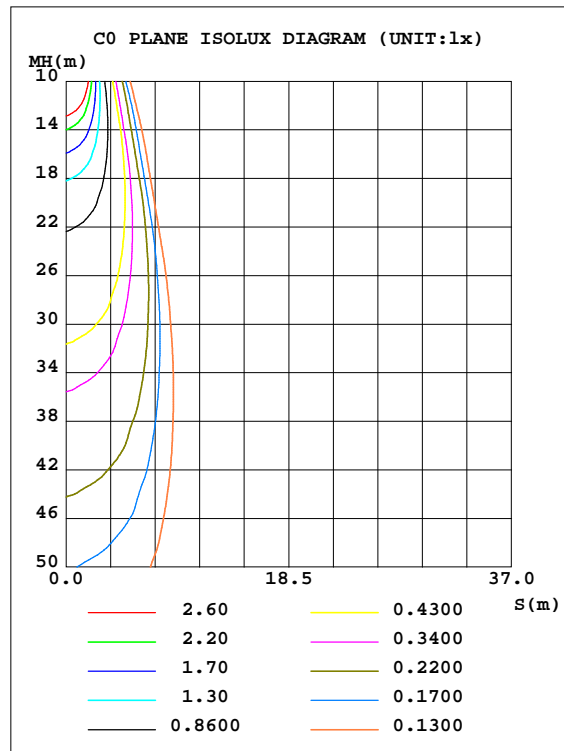
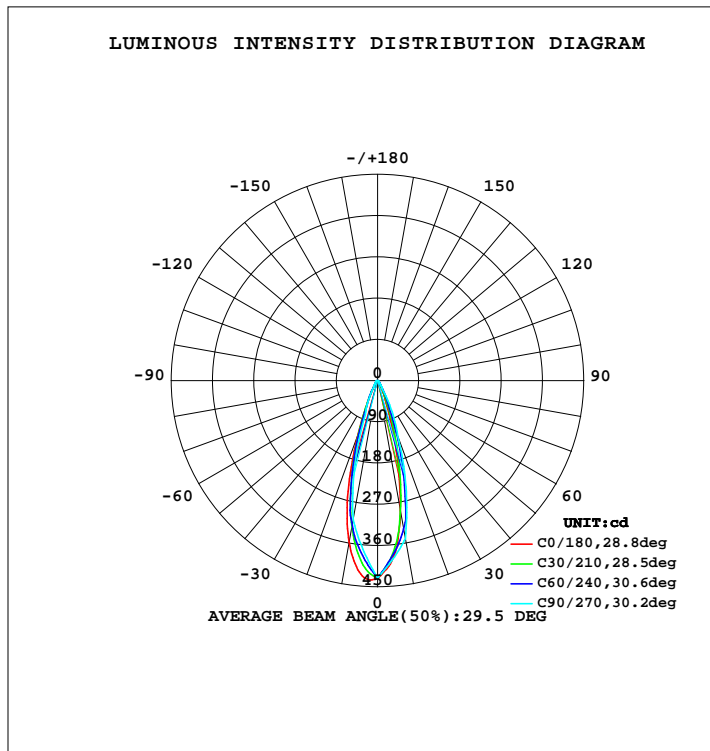


**LUMINAIRE PHOTOMETRIC TEST REPORT**

NAME: RXEL37RW	TYPE:	WEIGHT:
SPEC.:	DIM.:	SERIAL No.: 20141023-1
MFR.:	SUR.:	PROTECTION ANGLE:

DATA OF LAMP		PHOTOMETRIC DATA			
MODEL		I <sub>max</sub> (cd)	435.1	S/MH(C0/180)	0.51
NOMINAL POWER(W)	3	LOR(%)	100.0	S/MH(C90/270)	0.46
RATED VOLTAGE(V)	120	TOTAL FLUX(lm)	134.06	h UP, DN(C0-180)	0.0, 52.6
NOMINAL FLUX(lm)	67.0283	CIE CLASS	DIRECT	h UP, DN(C180-360)	0.0, 47.4
LAMPS INSIDE	2	h up(%)	0.0	CIBSE SHR NOM	0.50
TEST VOLTAGE(V)	120	h down(%)	100.0	CIBSE SHR MAX	0.50



C Range: 0 - 360DEG  
C Interval: 5.0DEG  
Test Speed: HIGH  
Temperature: 30DEG  
Operators:  
Test Date: 2014-10-23

g Range: 0 - 90DEG  
g Interval: 0.5DEG  
Test System: EVERFINE GO-2000H\_V1 SYSTEM V2.0.287  
Humidity: 65.0%  
Test Distance: 13.450m [K=1.0000]  
Remarks: EMERGE

ZONAL FLUX DIAGRAM

ZONAL FLUX DIAGRAM:

g	C0	C45	C90	C135	C180	C225	C270	C315	g	F zone	F total	%lum,lamp
5	388.6	380.5	390.3	399.3	423.9	390.4	369.6	359.1	0- 5	9.633	9.633	7.19,7.19
10	287.5	307.7	350.1	338.6	358.0	320.7	308.7	259.4	5- 10	24.88	34.51	25.7,25.7
15	158.4	208.3	240.0	252.2	250.1	225.8	194.1	147.9	10- 15	30.48	64.99	48.5,48.5
20	64.80	103.9	129.8	136.6	128.0	121.7	79.53	69.68	15- 20	24.63	89.62	66.9,66.9
25	29.62	44.48	75.94	55.74	51.34	53.80	48.97	30.00	20- 25	14.82	104.4	77.9,77.9
30	14.69	21.13	22.04	22.90	20.89	24.26	18.40	14.19	25- 30	8.248	112.7	84.1,84.1
35	8.104	11.58	14.57	12.10	10.61	12.87	13.08	8.812	30- 35	4.400	117.1	87.3,87.3
40	6.312	7.253	7.106	7.302	7.291	7.610	7.753	6.809	35- 40	3.033	120.1	89.6,89.6
45	5.120	5.915	5.920	5.939	5.814	6.316	6.990	6.008	40- 45	2.438	122.6	91.4,91.4
50	4.594	4.961	4.735	4.974	5.054	5.327	6.228	5.358	45- 50	2.242	124.8	93.1,93.1
55	4.140	4.349	4.184	4.306	4.290	4.798	5.426	4.485	50- 55	2.100	126.9	94.7,94.7
60	3.443	3.670	3.634	3.802	3.704	4.346	4.623	3.675	55- 60	1.929	128.8	96.1,96.1
65	2.596	2.930	2.943	3.116	2.986	3.484	3.654	2.981	60- 65	1.686	130.5	97.4,97.4
70	1.928	2.171	2.251	2.382	2.241	2.713	2.685	2.278	65- 70	1.369	131.9	98.4,98.4
75	1.182	1.420	1.600	1.763	1.513	2.033	2.039	1.591	70- 75	1.033	132.9	99.2,99.2
80	0.6362	0.8613	0.9489	1.058	0.9573	1.429	1.393	1.115	75- 80	0.7165	133.6	99.7,99.7
85	0.2526	0.2404	0	0.2579	0.4034	0.4494	0	0.3533	80- 85	0.3703	134.0	100,100
90	0	0	0	0	0.0000	0	0	0	85- 90	0.0468	134.1	100,100
95									90- 95			
100									95-100			
105									100-105			
110									105-110			
115									110-115			
120									115-120			
125									120-125			
130									125-130			
135									130-135			
140									135-140			
145									140-145			
150									145-150			
155									150-155			
160									155-160			
165									160-165			
170									165-170			
175									170-175			
180									175-180			
DEG	LUMINOUS INTENSITY:cd								UNIT:lm			

C Range: 0 - 360DEG  
 C Interval: 5.0DEG  
 Test Speed: HIGH  
 Temperature:30DEG  
 Operators:  
 Test Date:2014-10-23

g Range: 0 - 90DEG  
 g Interval: 0.5DEG  
 Test System:EVERFINE GO-2000H\_V1 SYSTEM V2.0.287  
 Humidity:65.0%  
 Test Distance:13.450m [K=1.0000]  
 Remarks: EMERGE



WEC AND CCEC

NAME:	TYPE:	WEIGHT:
SPEC.:	DIM.:	SERIAL No.:20141023-1
MFR.:	SUR.:	PROTECTION ANGLE:

rcc	80%			70%			50%			30%			10%			0
rw	50%	30%	10%	50%	30%	10%	50%	30%	10%	50%	30%	10%	50%	30%	10%	0
r fc	20%			20%			20%			20%			20%			0
RCR	RCR:Room Cavity Ratio						Wall Exitance Coefficients(WEC)									
0.0																
1.0	.169	.096	.030	.162	.093	.029	.150	.086	.027	.138	.080	.026	.128	.074	.024	
2.0	.158	.086	.027	.152	.084	.026	.142	.079	.024	.132	.074	.023	.123	.070	.022	
3.0	.147	.078	.023	.142	.076	.023	.133	.072	.022	.125	.069	.021	.117	.065	.020	
4.0	.137	.071	.021	.133	.070	.021	.126	.067	.020	.119	.064	.019	.112	.061	.019	
5.0	.129	.066	.019	.125	.064	.019	.119	.062	.018	.113	.059	.018	.107	.057	.017	
6.0	.121	.061	.017	.118	.060	.017	.112	.058	.017	.107	.056	.016	.102	.054	.016	
7.0	.114	.057	.016	.112	.056	.016	.107	.054	.016	.102	.052	.015	.098	.051	.015	
8.0	.108	.053	.015	.106	.052	.015	.102	.051	.015	.098	.050	.014	.094	.048	.014	
9.0	.103	.050	.014	.101	.049	.014	.097	.048	.014	.094	.047	.013	.090	.046	.013	
10.0	.098	.047	.013	.097	.047	.013	.093	.046	.013	.090	.045	.013	.087	.044	.013	

rcc	80%			70%			50%			30%			10%			0
rw	50%	30%	10%	50%	30%	10%	50%	30%	10%	50%	30%	10%	50%	30%	10%	0
r fc	20%			20%			20%			20%			20%			0
RCR	RCR:Room Cavity Ratio						Ceiling Cavity Exitance Coefficients(CCEC)									
0.0	.190	.190	.190	.163	.163	.163	.111	.111	.111	.064	.064	.064	.020	.020	.020	
1.0	.171	.157	.146	.146	.135	.125	.100	.093	.087	.057	.054	.050	.018	.017	.016	
2.0	.154	.133	.114	.132	.114	.099	.091	.079	.069	.052	.046	.040	.017	.015	.013	
3.0	.141	.113	.092	.121	.098	.080	.083	.068	.056	.048	.040	.033	.015	.013	.011	
4.0	.129	.098	.075	.111	.085	.065	.076	.059	.046	.044	.035	.027	.014	.011	.009	
5.0	.119	.087	.062	.103	.075	.054	.071	.052	.038	.041	.031	.023	.013	.010	.007	
6.0	.111	.077	.052	.095	.067	.046	.066	.047	.032	.038	.027	.019	.012	.009	.006	
7.0	.104	.069	.045	.089	.060	.039	.062	.042	.028	.036	.025	.016	.012	.008	.005	
8.0	.097	.062	.039	.084	.054	.034	.058	.038	.024	.034	.022	.014	.011	.007	.005	
9.0	.091	.057	.034	.079	.049	.029	.055	.035	.021	.032	.021	.012	.010	.007	.004	
10.0	.087	.052	.029	.075	.045	.026	.052	.032	.018	.030	.019	.011	.010	.006	.004	

C Range: 0 - 360DEG  
 C Interval: 5.0DEG  
 Test Speed: HIGH  
 Temperature:30DEG  
 Operators:  
 Test Date:2014-10-23

g Range: 0 - 90DEG  
 g Interval: 0.5DEG  
 Test System:EVERFINE GO-2000H\_V1 SYSTEM V2.0.287  
 Humidity:65.0%  
 Test Distance:13.450m [K=1.0000]  
 Remarks: EMERGE

UGR(Unified Glare Rating) Table

NAME:					TYPE:					WEIGHT:					
SPEC.:					DIM.:					SERIAL No.:20141023-1					
MFR.:					SUR.:					PROTECTION ANGLE:					
ceiling/cavity	0.7	0.7	0.5	0.5	0.3	0.7	0.7	0.5	0.5	0.3	0.7	0.7	0.5	0.5	0.3
walls	0.5	0.3	0.5	0.3	0.3	0.5	0.3	0.5	0.3	0.3	0.5	0.3	0.5	0.3	0.3
working plane	0.2	0.2	0.2	0.2	0.2	0.2	0.2	0.2	0.2	0.2	0.2	0.2	0.2	0.2	0.2
Room dimensions	Viewed crosswise					Viewed endwise									
x = 2H y = 2H	11.4	12.2	11.6	12.4	12.5	12.3	13.1	12.5	13.3	13.4	12.3	13.1	12.5	13.3	13.4
3H	12.6	13.3	12.8	13.5	13.7	13.6	14.4	13.9	14.6	14.8	13.6	14.4	13.9	14.6	14.8
4H	13.0	13.7	13.3	13.9	14.1	14.2	14.9	14.5	15.1	15.3	14.2	14.9	14.5	15.1	15.3
6H	13.2	13.9	13.5	14.1	14.4	14.6	15.3	14.9	15.5	15.8	14.6	15.3	14.9	15.5	15.8
8H	13.3	13.9	13.6	14.2	14.4	14.7	15.3	15.0	15.6	15.8	14.7	15.3	15.0	15.6	15.8
12H	13.3	13.9	13.6	14.2	14.4	14.6	15.3	15.0	15.5	15.8	14.6	15.3	15.0	15.5	15.8
4H 2H	12.1	12.8	12.4	13.0	13.3	12.8	13.5	13.1	13.8	14.0	12.8	13.5	13.1	13.8	14.0
3H	13.4	14.1	13.8	14.3	14.6	14.4	15.0	14.7	15.3	15.5	14.4	15.0	14.7	15.3	15.5
4H	13.9	14.5	14.3	14.8	15.1	15.0	15.6	15.4	15.9	16.2	15.0	15.6	15.4	15.9	16.2
6H	14.3	14.8	14.6	15.1	15.4	15.6	16.1	15.9	16.4	16.8	15.6	16.1	15.9	16.4	16.8
8H	14.3	14.8	14.7	15.1	15.5	15.7	16.2	16.1	16.5	16.9	15.7	16.2	16.1	16.5	16.9
12H	14.3	14.8	14.8	15.2	15.5	15.6	16.1	16.1	16.5	16.9	15.6	16.1	16.1	16.5	16.9
8H 4H	14.2	14.7	14.6	15.0	15.4	15.2	15.7	15.6	16.0	16.4	15.2	15.7	15.6	16.0	16.4
6H	14.6	15.0	15.1	15.4	15.8	15.9	16.3	16.3	16.7	17.1	15.9	16.3	16.3	16.7	17.1
8H	14.7	15.1	15.2	15.5	15.9	16.0	16.4	16.5	16.8	17.2	16.0	16.4	16.5	16.8	17.2
12H	14.8	15.1	15.3	15.6	16.0	16.0	16.3	16.5	16.8	17.2	16.0	16.3	16.5	16.8	17.2
12H 4H	14.2	14.7	14.6	15.0	15.4	15.2	15.6	15.6	16.0	16.4	15.2	15.6	15.6	16.0	16.4
6H	14.7	15.0	15.1	15.5	15.9	15.9	16.2	16.3	16.7	17.1	15.9	16.2	16.3	16.7	17.1
8H	14.8	15.1	15.3	15.6	16.1	16.1	16.4	16.5	16.8	17.3	16.1	16.4	16.5	16.8	17.3
Variations with the observer position at spacings:															
S = 1.0H	+ 0.2 / - 0.2					+ 0.3 / - 0.4									
1.5H	+ 0.2 / - 0.2					+ 0.4 / - 0.4									
2.0H	+ 0.3 / - 0.3					+ 0.2 / - 0.3									

CIE Pub.117 Corrected 134.1 lm Total Lamp Luminous Flux.(8log(F/F0) = -7.0)

C Range: 0 - 360DEG  
 C Interval: 5.0DEG  
 Test Speed: HIGH  
 Temperature:30DEG  
 Operators:  
 Test Date:2014-10-23

g Range: 0 - 90DEG  
 g Interval: 0.5DEG  
 Test System:EVERFINE GO-2000H\_V1 SYSTEM V2.0.287  
 Humidity:65.0%  
 Test Distance:13.450m [K=1.0000]  
 Remarks: EMERGE

## UTILIZATION FACTORS TABLE

NAME:	TYPE:	WEIGHT:
SPEC.:	DIM.:	SERIAL No.:20141023-1
MFR.:	SUR.:	PROTECTION ANGLE:

REFLECTANCE										
Ceiling	0.8	0.8	0.8	0.7	0.7	0.7	0.5	0.5	0.5	0
Walls	0.7	0.5	0.3	0.7	0.5	0.3	0.7	0.5	0.3	0
Working plane	0.2	0.2	0.2	0.2	0.2	0.2	0.2	0.2	0.2	0
ROOM INDEX	UTILIZATION FACTORS(PERCENT) $k(RI) \times RCR = 5$									
k = 0.60	85	78	74	85	78	74	84	78	74	70
0.80	93	86	82	92	86	82	91	85	82	78
1.00	97	91	87	96	91	87	95	91	86	82
1.25	101	96	92	100	95	92	98	94	91	86
1.50	104	99	95	103	98	95	101	97	94	89
2.00	107	103	99	106	102	98	103	100	97	91
2.50	109	105	102	107	104	101	104	101	99	93
3.00	111	107	104	109	106	103	106	103	101	94
4.00	113	110	108	111	108	106	107	105	104	96
5.00	114	112	110	112	110	108	108	107	105	98
ROOM INDEX	UF(total)									Direct
According to DIN EN 13032-2 2004			Suspended				SHRNOM = 1.25			

C Range: 0 - 360DEG  
 C Interval: 5.0DEG  
 Test Speed: HIGH  
 Temperature:30DEG  
 Operators:  
 Test Date:2014-10-23

g Range: 0 - 90DEG  
 g Interval: 0.5DEG  
 Test System:EVERFINE GO-2000H\_V1 SYSTEM V2.0.287  
 Humidity:65.0%  
 Test Distance:13.450m [K=1.0000]  
 Remarks: EMERGE

ISOCANDELA DIAGRAM

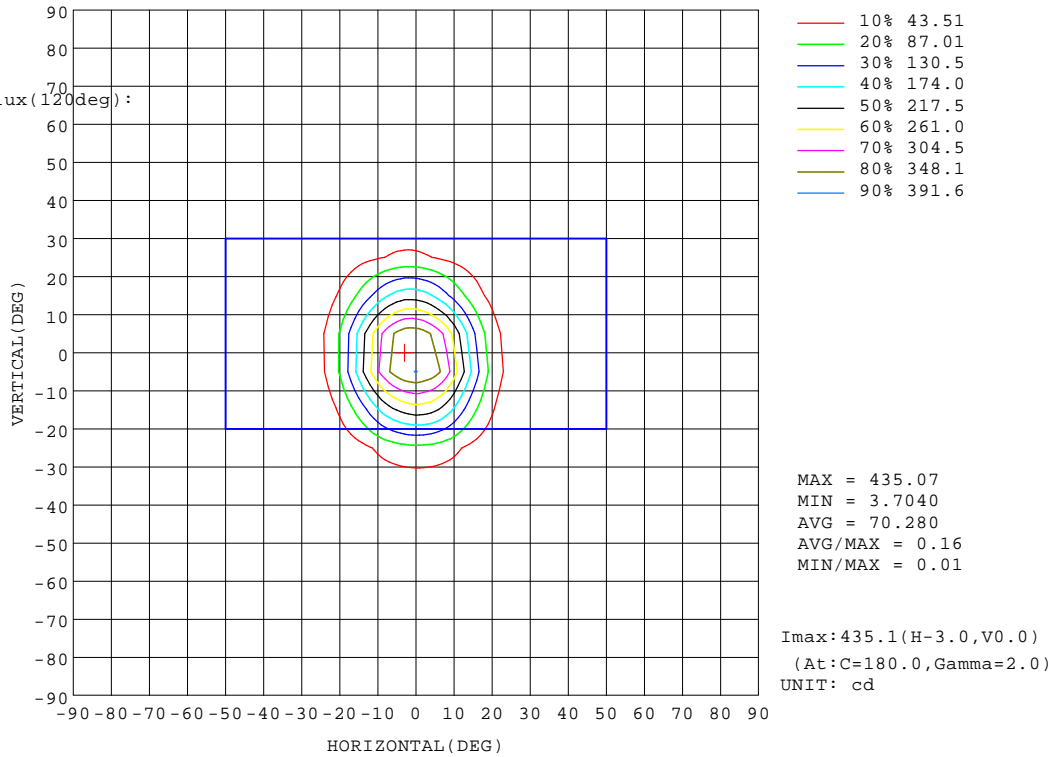
NAME:	TYPE:	WEIGHT:
SPEC.:	DIM.:	SERIAL No.:20141023-1
MFR.:	SUR.:	PROTECTION ANGLE:

Conical surface Flux(90deg):

122.56 lm  
 %lum = 91.4%  
 %lamp = 91.4%

Conical surface Flux(120deg):

128.83 lm  
 %lum = 96.1%  
 %lamp = 96.1%

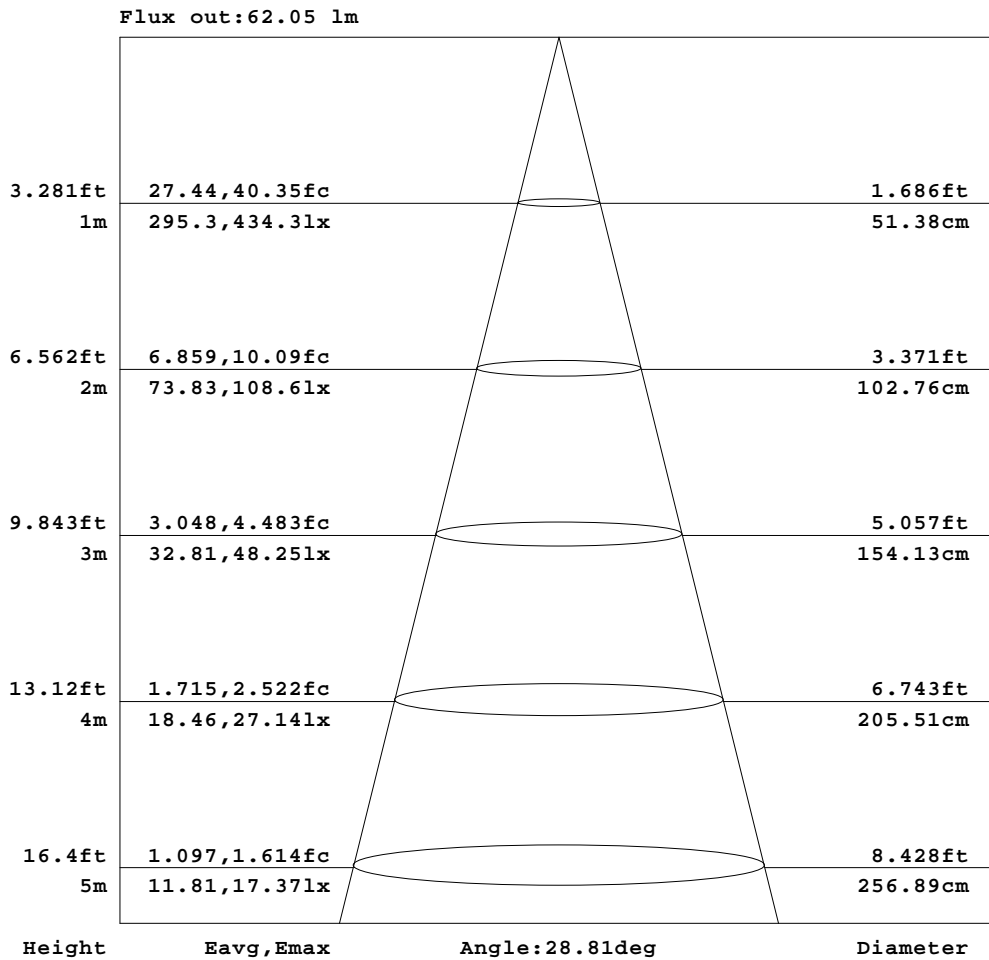


C Range: 0 - 360DEG  
 C Interval: 5.0DEG  
 Test Speed: HIGH  
 Temperature:30DEG  
 Operators:  
 Test Date:2014-10-23

g Range: 0 - 90DEG  
 g Interval: 0.5DEG  
 Test System:EVERFINE GO-2000H\_V1 SYSTEM V2.0.287  
 Humidity:65.0%  
 Test Distance:13.450m [K=1.0000]  
 Remarks: EMERGE

AAI Figure

NAME:	TYPE:	WEIGHT:
SPEC.:	DIM.:	SERIAL No.:20141023-1
MFR.:	SUR.:	PROTECTION ANGLE:



Note:The Curves indicate the illuminated area and the average illumination when the luminaire is at different distance.

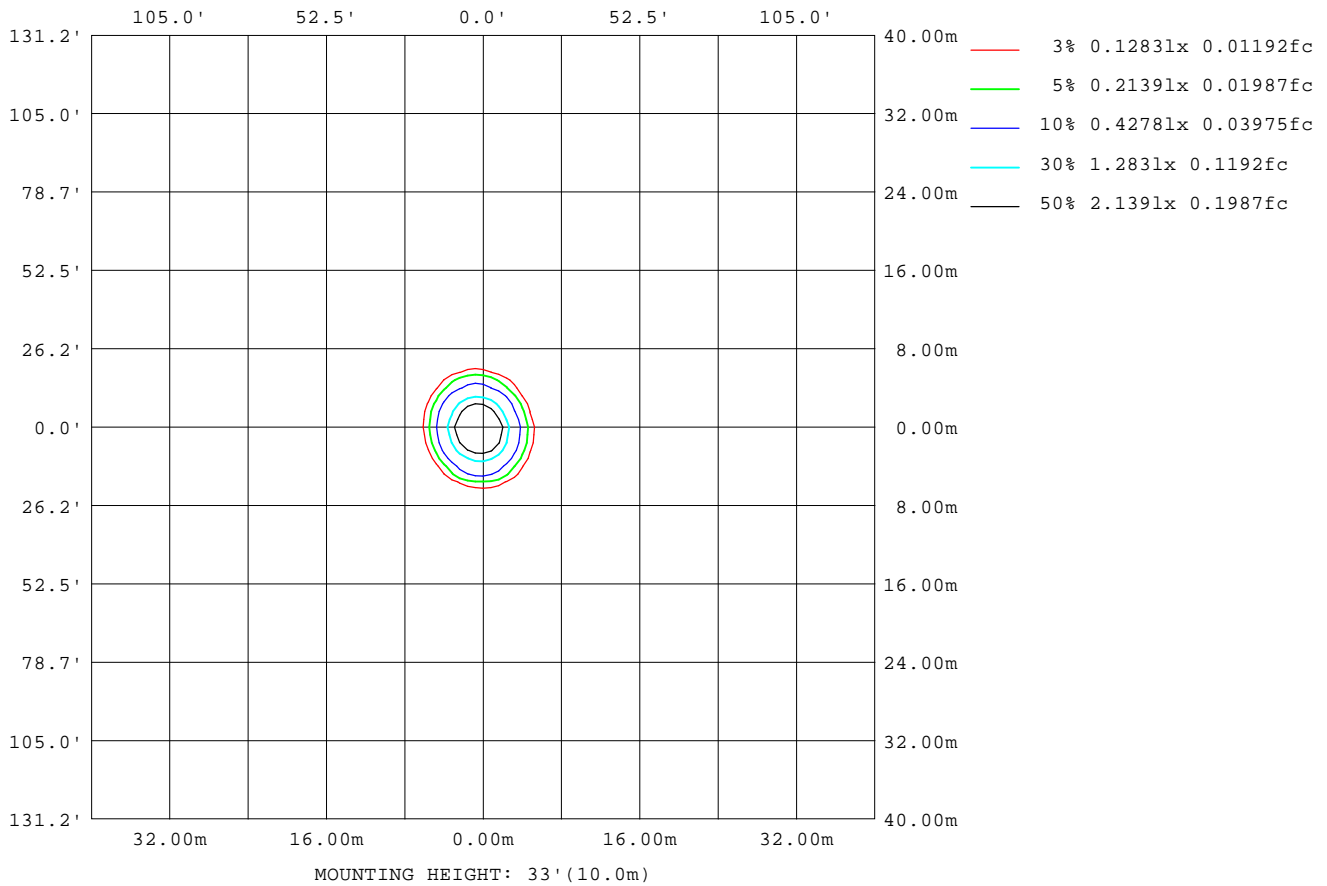
C Range: 0 - 360DEG  
 C Interval: 5.0DEG  
 Test Speed: HIGH  
 Temperature:30DEG  
 Operators:  
 Test Date:2014-10-23

g Range: 0 - 90DEG  
 g Interval: 0.5DEG  
 Test System:EVERFINE GO-2000H\_V1 SYSTEM V2.0.287  
 Humidity:65.0%  
 Test Distance:13.450m [K=1.0000]  
 Remarks: EMERGE



ISOLUX DIAGRAM

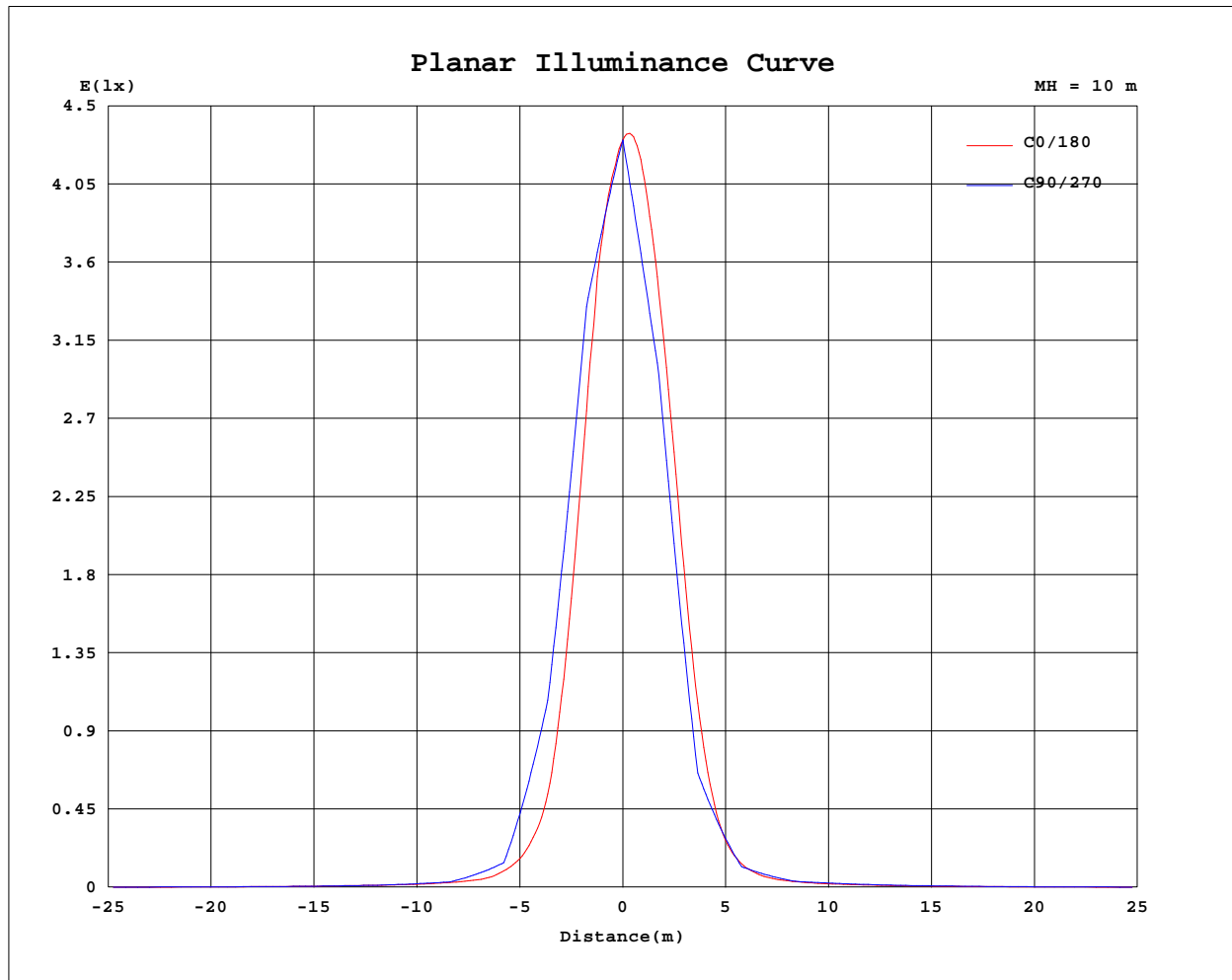
NAME:	TYPE:	WEIGHT:
SPEC.:	DIM.:	SERIAL No.:20141023-1
MFR.:	SUR.:	PROTECTION ANGLE:



C Range: 0 - 360DEG  
 C Interval: 5.0DEG  
 Test Speed: HIGH  
 Temperature:30DEG  
 Operators:  
 Test Date:2014-10-23

g Range: 0 - 90DEG  
 g Interval: 0.5DEG  
 Test System:EVERFINE GO-2000H\_V1 SYSTEM V2.0.287  
 Humidity:65.0%  
 Test Distance:13.450m [K=1.0000]  
 Remarks: EMERGE

## Planar Illuminance Curve



C Range: 0 - 360DEG  
C Interval: 5.0DEG  
Test Speed: HIGH  
Temperature: 30DEG  
Operators:  
Test Date: 2014-10-23

g Range: 0 - 90DEG  
g Interval: 0.5DEG  
Test System: EVERFINE GO-2000H\_V1 SYSTEM V2.0.287  
Humidity: 65.0%  
Test Distance: 13.450m [K=1.0000]  
Remarks: EMERGE







