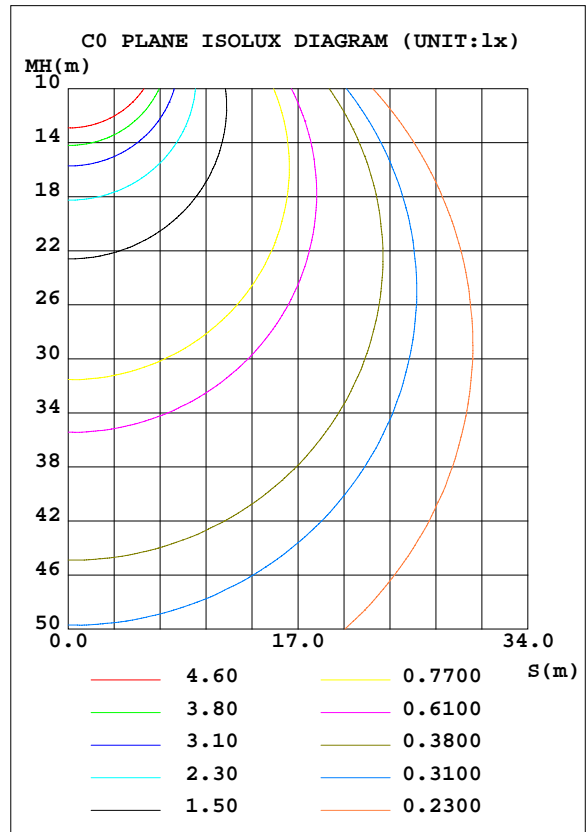
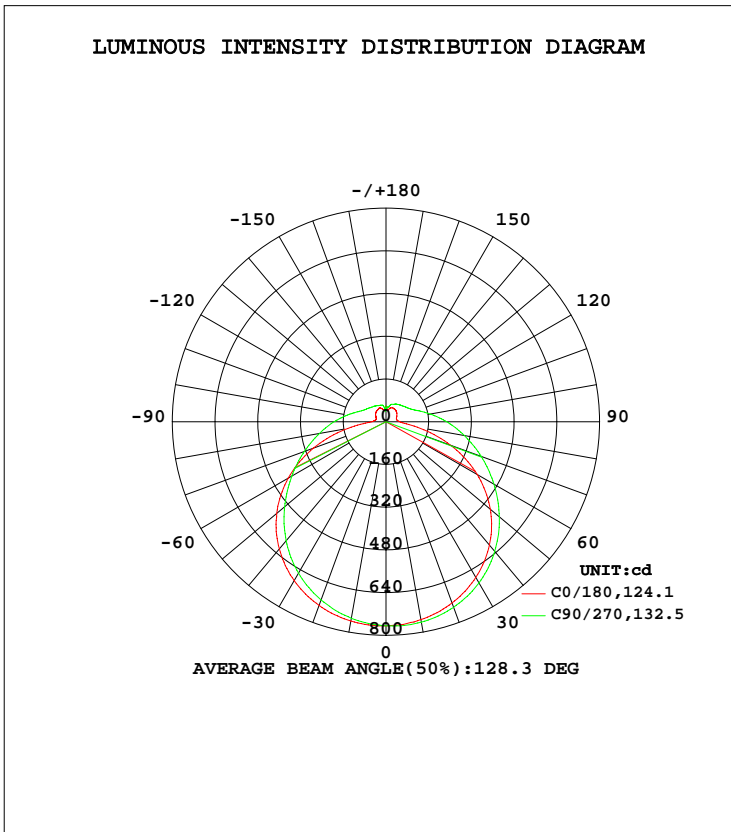


LUMINAIRE PHOTOMETRIC TEST REPORT

Test:U:120.1V I:0.2881A P:34.09W PF:0.9856 Lamp Flux:3230.47x1 lm		
NAME: 4105-40-WH	TYPE:N/A	WEIGHT:N/A
SPEC.:N/A	DIM.: N/A	SERIAL No.:N/A
MFR.:	SUR.:N/A	Shielding Angle:N/A

DATA OF LAMP		PHOTOMETRIC DATA Eff: 94.76 lm/W			
MODEL	4105-40-WH	Imax(cd)	766.2	S/MH(C0/180)	1.31
NOMINAL POWER(W)	35	LOR(%)	100.0	S/MH(C90/270)	1.36
RATED VOLTAGE(V)	120	TOTAL FLUX(lm)	3230.5	η UP, DN(C0-180)	7.5,40.7
NOMINAL FLUX(lm)	3230.47	CIE CLASS	SEMI-D.	η UP, DN(C180-360)	8.3,43.4
LAMPS INSIDE	1	η up(%)	15.8	CIBSE SHR NOM	1.50
TEST VOLTAGE(V)	120	η down(%)	84.2	CIBSE SHR MAX	1.55



C Range: 0 - 360DEG
 C Interval: 22.5DEG
 Test Speed: 10.0deg/s
 Temperature:25.1DEG
 Operators:Arno
 Test Date:

γ Range: 0 - 180DEG
 γ Interval: 1.0DEG
 Test System:EVERFINE GO-R5000_V2 SYSTEM V2.0.351
 Humidity:44%
 Test Distance:2.500m [K=0.9819]
 Remarks:

ZONAL FLUX DIAGRAM

ZONAL FLUX DIAGRAM:

γ	C0	C45	C90	C135	C180	C225	C270	C315	γ	Φ zone	Φ total	%lum,lamp
10	757.6	751.5	747.5	748.5	752.2	758.4	762.2	761.2	0- 10	72.51	72.51	2.24,2.24
20	732.4	719.4	710.5	713.0	722.4	734.0	740.0	738.0	10- 20	209.9	282.4	8.74,8.74
30	687.4	668.8	654.8	658.6	673.1	689.0	696.9	695.6	20- 30	325.1	607.5	18.8,18.8
40	621.6	598.8	582.0	584.9	602.6	623.8	633.6	632.6	30- 40	404.7	1012	31.3,31.3
50	534.3	510.2	495.8	494.3	510.1	539.0	553.9	550.1	40- 50	439.0	1451	44.9,44.9
60	422.9	407.5	407.3	393.7	394.4	438.0	466.9	452.5	50- 60	424.3	1876	58.1,58.1
70	289.0	304.7	325.4	298.2	257.6	333.1	379.6	352.6	60- 70	366.8	2242	69.4,69.4
80	145.8	213.8	253.0	214.7	119.7	236.4	298.3	258.3	70- 80	281.6	2524	78.1,78.1
90	54.18	142.4	194.6	149.1	52.14	156.9	227.5	178.2	80- 90	194.8	2719	84.2,84.2
100	40.01	94.41	146.7	103.9	41.54	102.5	168.3	118.4	90-100	132.3	2851	88.3,88.3
110	39.29	72.93	111.4	81.37	41.93	80.43	124.1	87.67	100-110	94.74	2946	91.2,91.2
120	44.69	67.19	91.32	73.86	47.45	75.13	100.2	78.29	110-120	74.91	3021	93.5,93.5
130	50.51	65.70	81.32	69.65	52.85	73.30	89.54	73.63	120-130	63.54	3084	95.5,95.5
140	53.88	64.29	74.59	68.02	56.82	71.75	82.29	71.35	130-140	53.11	3137	97.1,97.1
150	56.05	62.60	69.86	65.04	57.78	67.23	76.88	69.76	140-150	41.94	3179	98.4,98.4
160	54.56	62.82	65.84	62.39	55.89	60.49	69.76	68.59	150-160	29.70	3209	99.3,99.3
170	45.96	56.26	61.29	48.81	44.20	47.65	56.61	63.70	160-170	16.54	3226	99.8,99.8
180	58.35	57.07	61.34	56.45	58.54	58.66	48.24	44.95	170-180	4.966	3230	100,100
DEG	LUMINOUS INTENSITY:cd Less than 25% Percent = 13.8 %									UNIT:lm		

Conical surface Flux(90deg): 1230.5 lm

%lum = 38.1%
 %lamp = 38.1%

Conical surface Flux(120deg): 1875.5 lm

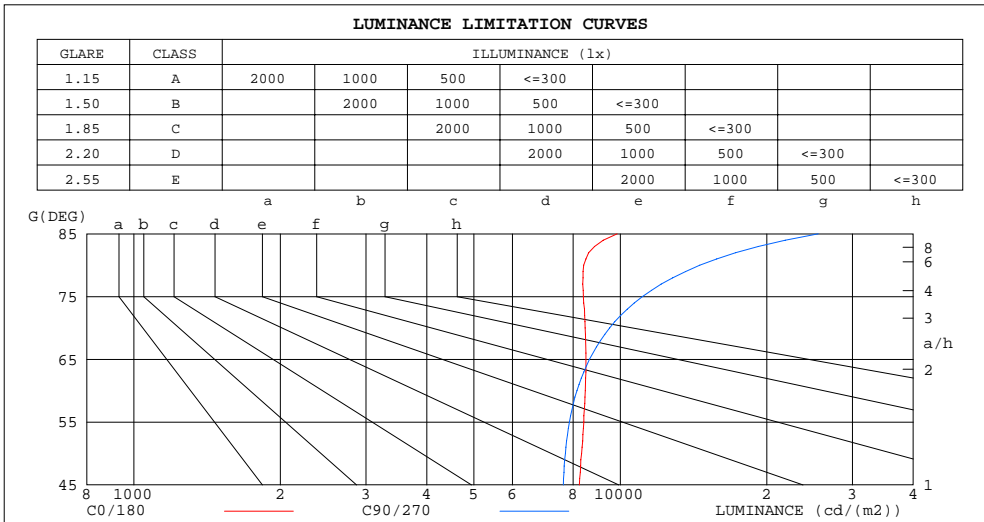
%lum = 58.1%
 %lamp = 58.1%

C Range: 0 - 360DEG
 C Interval: 22.5DEG
 Test Speed: 10.0deg/s
 Temperature:25.1DEG
 Operators:Arno
 Test Date:

γ Range: 0 - 180DEG
 γ Interval: 1.0DEG
 Test System:EVERFINE GO-R5000_V2 SYSTEM V2.0.351
 Humidity:44%
 Test Distance:2.500m [K=0.9819]
 Remarks:

LUMINANCE LIMITATION CURVES

Test:U:120.1V I:0.2881A P:34.09W PF:0.9856 Lamp Flux:3230.47x1 lm		
NAME:4105-40-WH	TYPE:N/A	WEIGHT:N/A
SPEC.:N/A	DIM.: N/A	SERIAL No.:N/A
MFR.:	SUR.:N/A	Shielding Angle:N/A



LUMINANCE cd/(m2)		
G (DEG)	C0/180	C90/270
85	9848	25520
80	8410	14562
75	8394	11103
70	8467	9508
65	8499	8643
60	8473	8142
55	8416	7860
50	8328	7709
45	8238	7636

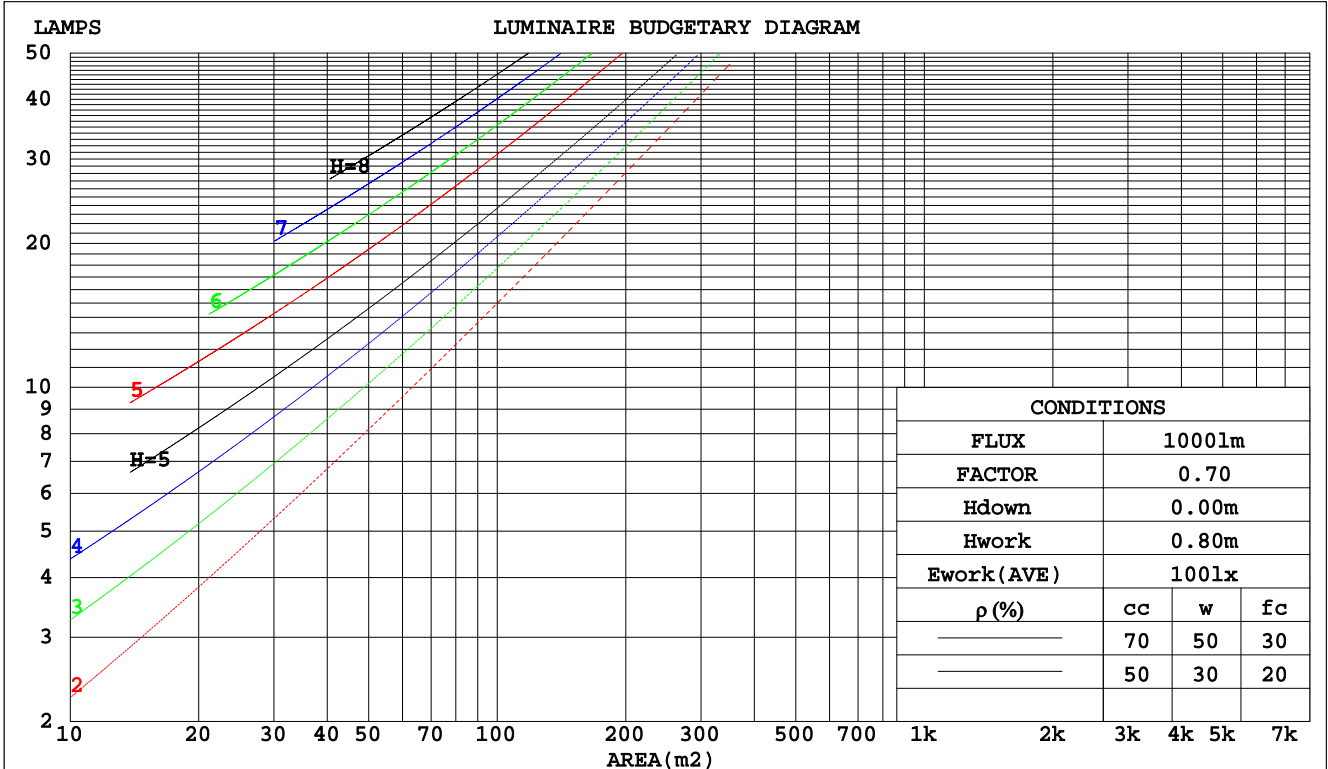
C Range: 0 - 360DEG
 C Interval: 22.5DEG
 Test Speed: 10.0deg/s
 Temperature:25.1DEG
 Operators:Arno
 Test Date:

γ Range: 0 - 180DEG
 γ Interval: 1.0DEG
 Test System:EVERFINE GO-R5000_V2 SYSTEM V2.0.351
 Humidity:44%
 Test Distance:2.500m [K=0.9819]
 Remarks:

CU AND LUMINAIRE BUDGETARY ESTIMATE DIAGRAM

Test:U:120.1V I:0.2881A P:34.09W PF:0.9856 Lamp Flux:3230.47x1 lm		
NAME: 4105-40-WH	TYPE:N/A	WEIGHT:N/A
SPEC.:N/A	DIM.: N/A	SERIAL No.:N/A
MFR.:	SUR.:N/A	Shielding Angle:N/A

pcc	80%			70%			50%			30%			10%			0
	50%	30%	10%	50%	30%	10%	50%	30%	10%	50%	30%	10%	50%	30%	10%	0
pw																
pfc	20%			20%			20%			20%			20%			0
RCR	RCR:Room Cavity Ratio															
	Coefficients of Utilization(CU)															
0.0	1.15	1.15	1.15	1.11	1.11	1.11	1.02	1.02	1.02	.95	.95	.95	.87	.87	.87	.84
1.0	.97	.92	.87	.93	.89	.85	.86	.82	.79	.79	.76	.74	.73	.71	.69	.66
2.0	.83	.76	.69	.80	.73	.67	.74	.68	.63	.68	.64	.60	.63	.59	.56	.53
3.0	.73	.64	.57	.70	.62	.55	.64	.58	.52	.60	.54	.49	.55	.50	.47	.44
4.0	.64	.55	.47	.61	.53	.46	.57	.50	.44	.53	.47	.42	.49	.44	.39	.37
5.0	.57	.47	.40	.55	.46	.39	.51	.43	.38	.47	.41	.36	.44	.38	.34	.31
6.0	.51	.42	.35	.49	.40	.34	.46	.38	.33	.42	.36	.31	.39	.34	.30	.27
7.0	.46	.37	.31	.44	.36	.30	.41	.34	.29	.38	.32	.27	.36	.30	.26	.24
8.0	.42	.33	.27	.40	.32	.26	.38	.30	.25	.35	.29	.24	.33	.27	.23	.21
9.0	.38	.30	.24	.37	.29	.24	.35	.28	.23	.32	.26	.22	.30	.25	.21	.19
10.0	.35	.27	.22	.34	.26	.21	.32	.25	.20	.30	.24	.20	.28	.23	.19	.17



C Range: 0 - 360DEG
 C Interval: 22.5DEG
 Test Speed: 10.0deg/s
 Temperature:25.1DEG
 Operators:Arno
 Test Date:

γ Range: 0 - 180DEG
 γ Interval: 1.0DEG
 Test System:EVERFINE GO-R5000_V2 SYSTEM V2.0.351
 Humidity:44%
 Test Distance:2.500m [K=0.9819]
 Remarks:

WEC AND CCEC

Test:U:120.1V I:0.2881A P:34.09W PF:0.9856 Lamp Flux:3230.47x1 lm		
NAME: 4105-40-WH	TYPE:N/A	WEIGHT:N/A
SPEC.:N/A	DIM.: N/A	SERIAL No.:N/A
MFR.:	SUR.:N/A	Shielding Angle:N/A

ρcc	80%			70%			50%			30%			10%			0
ρw	50%	30%	10%	50%	30%	10%	50%	30%	10%	50%	30%	10%	50%	30%	10%	0
ρfc	20%			20%			20%			20%			20%			0
RCR	RCR:Room Cavity Ratio						Wall Exitance Coefficients(WEC)									
0.0																
1.0	.366	.208	.066	.354	.202	.064	.331	.190	.061	.310	.179	.057	.291	.169	.054	
2.0	.322	.177	.054	.311	.172	.053	.291	.162	.050	.272	.153	.048	.255	.144	.045	
3.0	.289	.154	.046	.279	.150	.045	.261	.141	.043	.244	.134	.041	.228	.126	.039	
4.0	.262	.136	.040	.253	.132	.039	.236	.125	.037	.221	.119	.036	.206	.112	.034	
5.0	.239	.122	.035	.231	.118	.035	.216	.112	.033	.202	.106	.032	.189	.101	.030	
6.0	.219	.110	.031	.212	.107	.031	.198	.102	.030	.186	.096	.028	.174	.091	.027	
7.0	.203	.100	.028	.196	.098	.028	.184	.093	.027	.172	.088	.026	.161	.084	.025	
8.0	.188	.092	.026	.182	.090	.025	.171	.085	.024	.160	.081	.023	.150	.077	.022	
9.0	.176	.085	.024	.170	.083	.023	.160	.079	.022	.150	.075	.021	.140	.071	.021	
10.0	.165	.079	.022	.160	.077	.022	.150	.073	.021	.141	.070	.020	.132	.066	.019	

ρcc	80%			70%			50%			30%			10%			0
ρw	50%	30%	10%	50%	30%	10%	50%	30%	10%	50%	30%	10%	50%	30%	10%	0
ρfc	20%			20%			20%			20%			20%			0
RCR	RCR:Room Cavity Ratio						Ceiling Cavity Exitance Coefficients(CCEC)									
0.0	.311	.311	.311	.266	.266	.266	.182	.182	.182	.104	.104	.104	.033	.033	.033	
1.0	.306	.277	.252	.262	.238	.217	.179	.164	.150	.103	.095	.087	.033	.031	.028	
2.0	.299	.254	.217	.256	.219	.187	.175	.151	.131	.101	.088	.077	.032	.028	.025	
3.0	.291	.238	.195	.250	.205	.169	.171	.142	.118	.099	.083	.070	.032	.027	.023	
4.0	.284	.225	.180	.243	.194	.157	.167	.135	.110	.097	.079	.065	.031	.026	.021	
5.0	.276	.215	.170	.237	.186	.148	.163	.130	.104	.095	.076	.062	.030	.025	.020	
6.0	.269	.207	.163	.231	.179	.142	.159	.126	.100	.092	.074	.060	.030	.024	.020	
7.0	.262	.200	.157	.225	.174	.137	.156	.122	.097	.090	.072	.058	.029	.023	.019	
8.0	.255	.195	.153	.220	.169	.134	.152	.119	.095	.088	.070	.057	.029	.023	.019	
9.0	.249	.190	.150	.214	.165	.131	.149	.116	.093	.087	.068	.055	.028	.022	.018	
10.0	.243	.186	.148	.210	.161	.129	.145	.114	.092	.085	.067	.055	.028	.022	.018	

C Range: 0 - 360DEG
 C Interval: 22.5DEG
 Test Speed: 10.0deg/s
 Temperature:25.1DEG
 Operators:Arno
 Test Date:

γ Range: 0 - 180DEG
 γ Interval: 1.0DEG
 Test System:EVERFINE GO-R5000_V2 SYSTEM V2.0.351
 Humidity:44%
 Test Distance:2.500m [K=0.9819]
 Remarks:

UGR(Unified Glare Rating) Table

Test:U:120.1V I:0.2881A P:34.09W PF:0.9856 Lamp Flux:3230.47x1 lm										
NAME: 4105-40-WH					TYPE:N/A			WEIGHT:N/A		
SPEC.:N/A					DIM.: N/A			SERIAL No.:N/A		
MFR.:					SUR.:N/A			Shielding Angle:N/A		
ceiling/cavity	0.7	0.7	0.5	0.5	0.3	0.7	0.7	0.5	0.5	0.3
walls	0.5	0.3	0.5	0.3	0.3	0.5	0.3	0.5	0.3	0.3
working plane	0.2	0.2	0.2	0.2	0.2	0.2	0.2	0.2	0.2	0.2
Room dimensions	Viewed crosswise					Viewed endwise				
x = 2H y = 2H	19.2	20.6	19.7	21.0	21.6	19.0	20.4	19.5	20.9	21.4
3H	21.0	22.3	21.5	22.8	23.3	21.2	22.5	21.7	23.0	23.5
4H	21.8	23.0	22.3	23.5	24.1	22.4	23.6	22.9	24.1	24.7
6H	22.5	23.6	23.0	24.1	24.8	23.7	24.8	24.2	25.4	26.0
8H	22.7	23.8	23.3	24.4	25.0	24.4	25.5	25.0	26.1	26.7
12H	23.0	24.0	23.5	24.6	25.2	25.3	26.3	25.8	26.9	27.5
4H 2H	19.8	21.0	20.4	21.6	22.1	19.7	20.9	20.3	21.5	22.0
3H	21.8	22.9	22.4	23.5	24.1	22.1	23.2	22.7	23.7	24.4
4H	22.8	23.8	23.4	24.3	25.0	23.5	24.4	24.1	25.0	25.7
6H	23.6	24.5	24.2	25.1	25.8	25.0	25.8	25.6	26.4	27.1
8H	24.0	24.8	24.6	25.4	26.1	25.8	26.6	26.4	27.2	27.9
12H	24.3	25.1	25.0	25.7	26.4	26.8	27.5	27.4	28.2	28.9
8H 4H	23.3	24.1	23.9	24.7	25.4	23.9	24.7	24.5	25.3	26.0
6H	24.4	25.1	25.1	25.7	26.5	25.6	26.3	26.3	27.0	27.7
8H	24.9	25.5	25.6	26.2	27.0	26.7	27.3	27.4	28.0	28.7
12H	25.4	25.9	26.1	26.6	27.4	27.9	28.4	28.6	29.1	29.9
12H 4H	23.4	24.2	24.1	24.8	25.5	23.9	24.7	24.6	25.3	26.0
6H	24.6	25.3	25.3	25.9	26.7	25.8	26.4	26.5	27.1	27.8
8H	25.3	25.8	26.0	26.5	27.3	26.9	27.4	27.6	28.1	28.9
Variations with the observer position at spacings:										
S = 1.0H	+ 0.1 / - 0.1					+ 0.1 / - 0.1				
1.5H	+ 0.2 / - 0.3					+ 0.2 / - 0.3				
2.0H	+ 0.1 / - 0.3					+ 0.2 / - 0.4				

CIE Pub.117 Corrected 3230 lm Total Lamp Luminous Flux.(8log(F/F0) = 4.1)

C Range: 0 - 360DEG
 C Interval: 22.5DEG
 Test Speed: 10.0deg/s
 Temperature:25.1DEG
 Operators:Arno
 Test Date:

γ Range: 0 - 180DEG
 γ Interval: 1.0DEG
 Test System:EVERFINE GO-R5000_V2 SYSTEM V2.0.351
 Humidity:44%
 Test Distance:2.500m [K=0.9819]
 Remarks:

UTILIZATION FACTORS TABLE

Test:U:120.1V I:0.2881A P:34.09W PF:0.9856 Lamp Flux:3230.47x1 lm		
NAME: 4105-40-WH	TYPE:N/A	WEIGHT:N/A
SPEC.:N/A	DIM.: N/A	SERIAL No.:N/A
MFR.:	SUR.:N/A	Shielding Angle:N/A

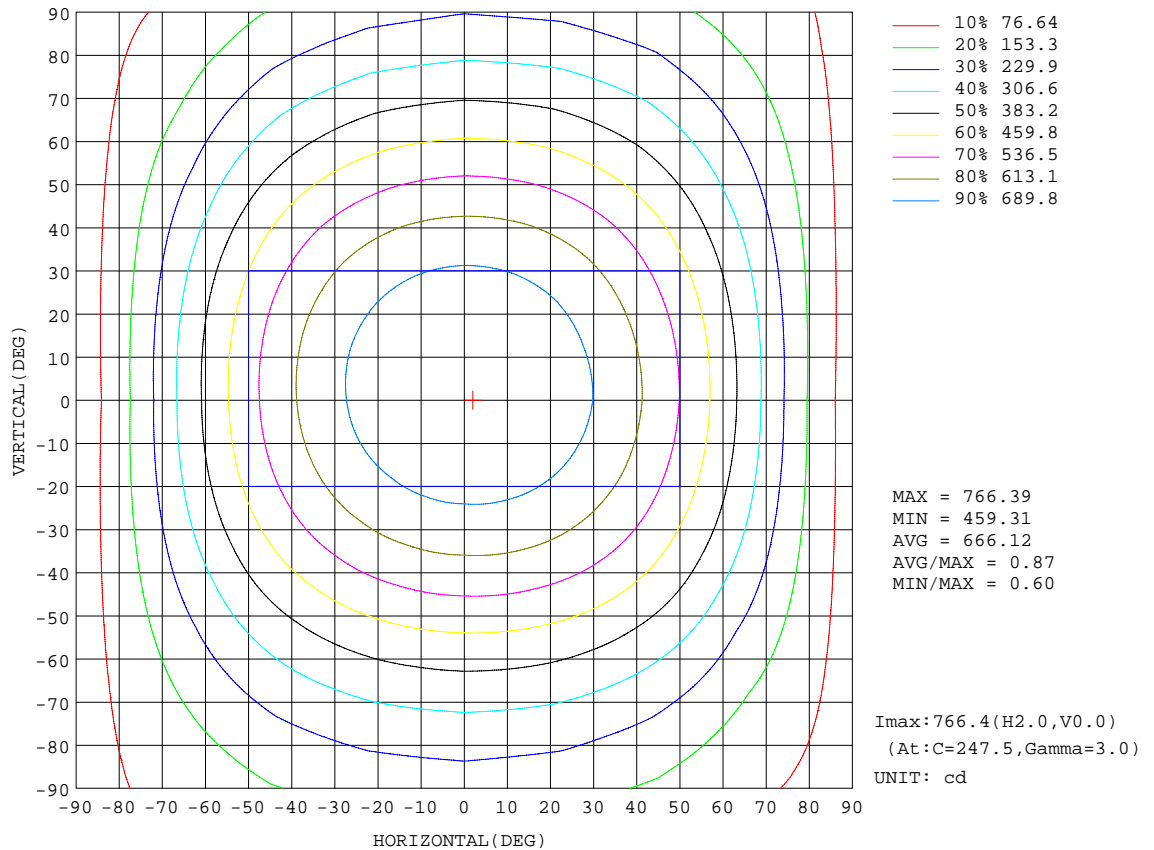
REFLECTANCE										
Ceiling	0.8	0.8	0.8	0.7	0.7	0.7	0.5	0.5	0.5	0
Walls	0.7	0.5	0.3	0.7	0.5	0.3	0.7	0.5	0.3	0
Working plane	0.2	0.2	0.2	0.2	0.2	0.2	0.2	0.2	0.2	0
ROOM INDEX	UTILIZATION FACTORS(PERCENT) $k(RI) \times RCR = 5$									
k = 0.60	49	37	30	48	37	30	46	36	29	23
0.80	59	46	38	57	45	38	54	44	37	29
1.00	67	54	46	65	53	46	61	54	44	36
1.25	74	62	53	71	60	53	67	58	51	41
1.50	79	67	59	76	66	58	71	62	56	46
2.00	86	76	68	83	73	66	78	70	63	52
2.50	90	81	73	87	78	72	81	74	68	56
3.00	94	85	78	91	83	76	84	78	73	60
4.00	99	91	85	95	88	83	88	83	78	64
5.00	101	95	90	98	92	87	90	86	82	67
ROOM INDEX	UF(total)									Direct
According to DIN EN 13032-2 2004			Suspended				SHRNOM = 1.25			

C Range: 0 - 360DEG
 C Interval: 22.5DEG
 Test Speed: 10.0deg/s
 Temperature:25.1DEG
 Operators:Arno
 Test Date:

γ Range: 0 - 180DEG
 γ Interval: 1.0DEG
 Test System:EVERFINE GO-R5000_V2 SYSTEM V2.0.351
 Humidity:44%
 Test Distance:2.500m [K=0.9819]
 Remarks:

ISOCANDELA DIAGRAM

Test:U:120.1V I:0.2881A P:34.09W PF:0.9856 Lamp Flux:3230.47x1 lm		
NAME: 4105-40-WH	TYPE:N/A	WEIGHT:N/A
SPEC.:N/A	DIM.: N/A	SERIAL No.:N/A
MFR.:	SUR.:N/A	Shielding Angle:N/A

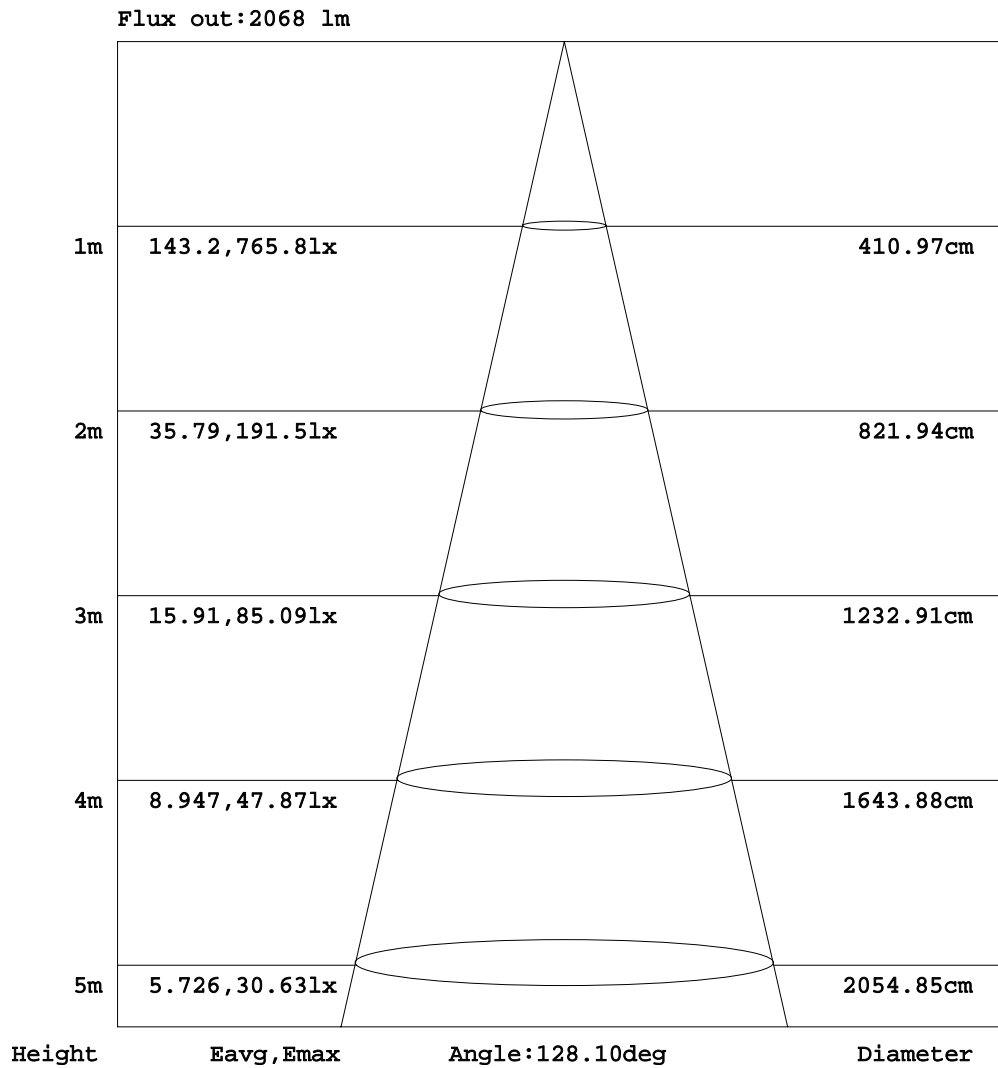


C Range: 0 - 360DEG
 C Interval: 22.5DEG
 Test Speed: 10.0deg/s
 Temperature:25.1DEG
 Operators:Arno
 Test Date:

γ Range: 0 - 180DEG
 γ Interval: 1.0DEG
 Test System:EVERFINE GO-R5000_V2 SYSTEM V2.0.351
 Humidity:44%
 Test Distance:2.500m [K=0.9819]
 Remarks:

AAI Figure

Test:U:120.1V I:0.2881A P:34.09W PF:0.9856 Lamp Flux:3230.47x1 lm		
NAME: 4105-40-WH	TYPE:N/A	WEIGHT:N/A
SPEC.:N/A	DIM.: N/A	SERIAL No.:N/A
MFR.:	SUR.:N/A	Shielding Angle:N/A



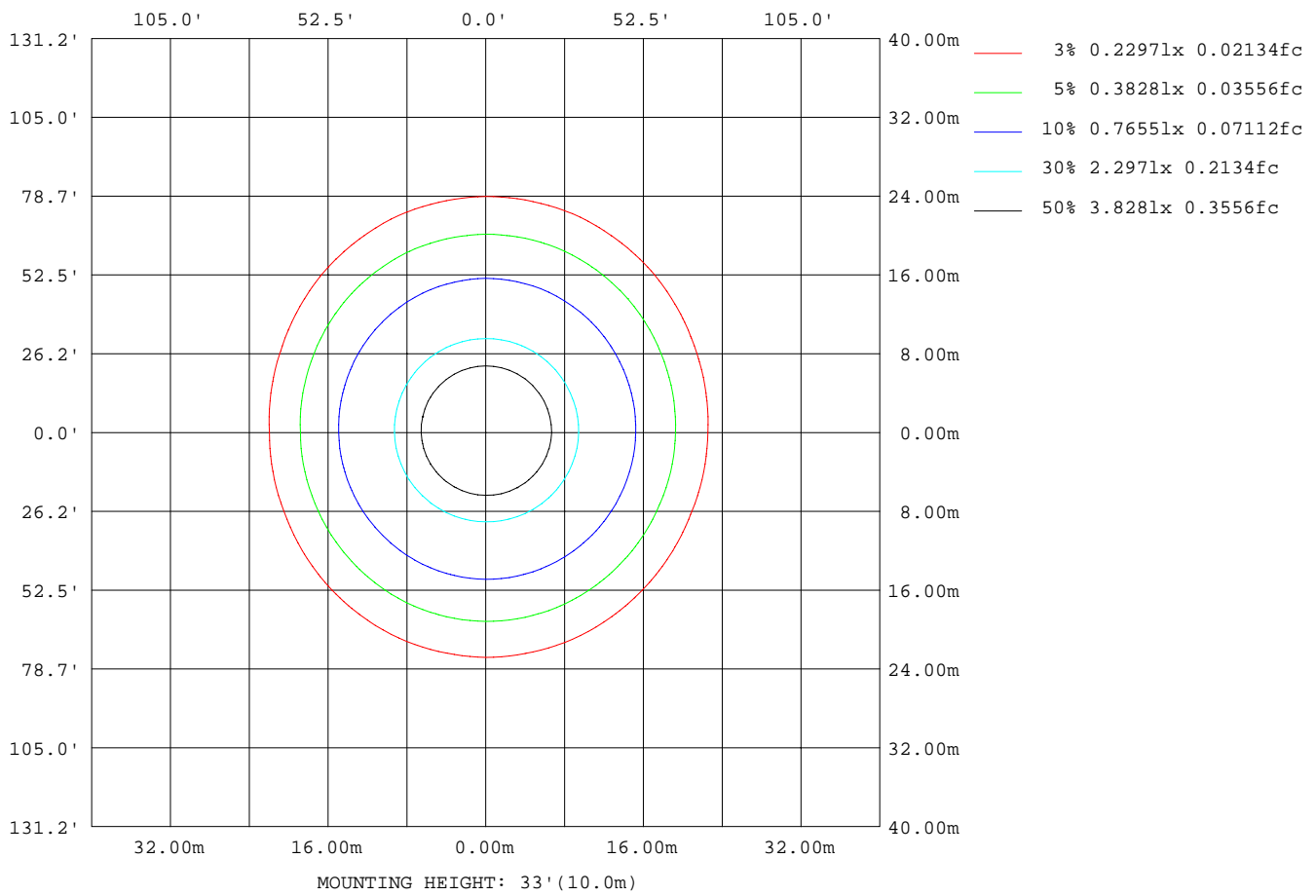
Note:The Curves indicate the illuminated area and the average illumination when the luminaire is at different distance.

C Range: 0 - 360DEG
 C Interval: 22.5DEG
 Test Speed: 10.0deg/s
 Temperature:25.1DEG
 Operators:Arno
 Test Date:

γ Range: 0 - 180DEG
 γ Interval: 1.0DEG
 Test System:EVERFINE GO-R5000_V2 SYSTEM V2.0.351
 Humidity:44%
 Test Distance:2.500m [K=0.9819]
 Remarks:

ISOLUX DIAGRAM

Test:U:120.1V I:0.2881A P:34.09W PF:0.9856 Lamp Flux:3230.47x1 lm		
NAME: 4105-40-WH	TYPE:N/A	WEIGHT:N/A
SPEC.:N/A	DIM.: N/A	SERIAL No.:N/A
MFR.:	SUR.:N/A	Shielding Angle:N/A



C Range: 0 - 360DEG
 C Interval: 22.5DEG
 Test Speed: 10.0deg/s
 Temperature:25.1DEG
 Operators:Arno
 Test Date:

γ Range: 0 - 180DEG
 γ Interval: 1.0DEG
 Test System:EVERFINE GO-R5000_V2 SYSTEM V2.0.351
 Humidity:44%
 Test Distance:2.500m [K=0.9819]
 Remarks:

LED Avg.L Report

Test:U:120.1V I:0.2881A P:34.09W PF:0.9856 Lamp Flux:3230.47x1 lm		
NAME: 4105-40-WH	TYPE:N/A	WEIGHT:N/A
SPEC.:N/A	DIM.: N/A	SERIAL No.:N/A
MFR.:	SUR.:N/A	Shielding Angle:N/A

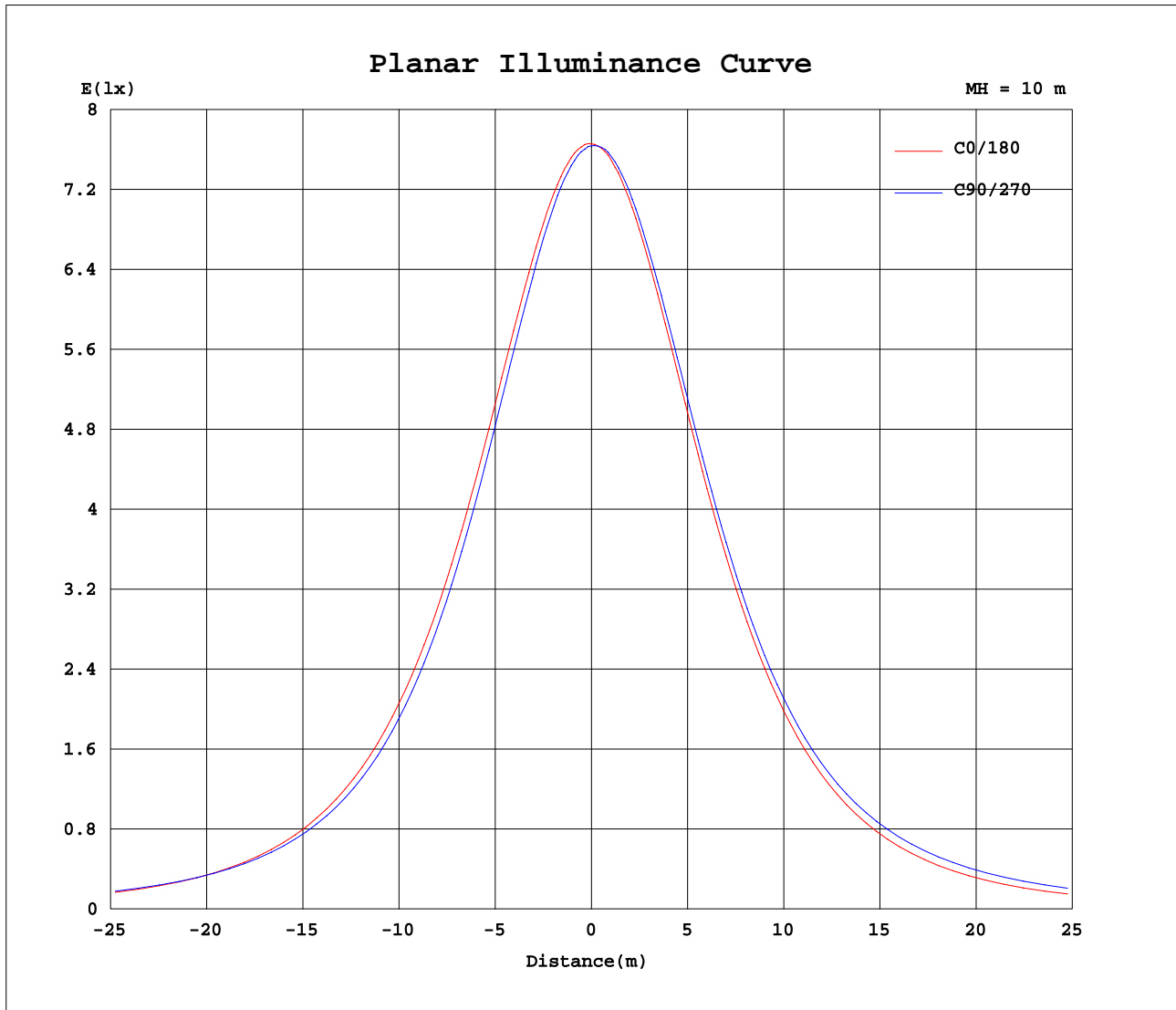
AvgL	cd/m2
L_0~180(65)av	8122
L_0~180(75)av	7788
L_0~180(85)av	8929
L_90~270(65)av	9327
L_90~270(75)av	12072
L_90~270(85)av	27744
L_45(65)av	8797
L_45(75)av	10621
L_45(85)av	21973

Standard: GB/T 29293-2012

C Range: 0 - 360DEG
 C Interval: 22.5DEG
 Test Speed: 10.0deg/s
 Temperature:25.1DEG
 Operators:Arno
 Test Date:

γ Range: 0 - 180DEG
 γ Interval: 1.0DEG
 Test System:EVERFINE GO-R5000_V2 SYSTEM V2.0.351
 Humidity:44%
 Test Distance:2.500m [K=0.9819]
 Remarks:

Planar Illuminance Curve



C Range: 0 - 360DEG
C Interval: 22.5DEG
Test Speed: 10.0deg/s
Temperature:25.1DEG
Operators:Arno
Test Date:

γ Range: 0 - 180DEG
 γ Interval: 1.0DEG
Test System:EVERFINE GO-R5000_V2 SYSTEM V2.0.351
Humidity:44%
Test Distance:2.500m [K=0.9819]
Remarks:

LUMINOUS DISTRIBUTION INTENSITY DATA

Test:U:120.1V I:0.2881A P:34.09W PF:0.9856 Lamp Flux:3230.47x1 lm		
NAME: 4105-40-WH	TYPE:N/A	WEIGHT:N/A
SPEC.:N/A	DIM.: N/A	SERIAL No.:N/A
MFR.:	SUR.:N/A	Shielding Angle:N/A

Table--1

UNIT: cd

C(DEG) γ (DEG)	0	22.5	45	67.5	90	112.5	135	157.5	180	202.5	225	247.5	270	292.5	315	337.5			
0	764	764	764	764	764	764	764	764	764	764	764	764	764	764	764	764			
5	764	762	760	759	758	757	759	759	762	763	764	765	766	765	765	764			
10	758	755	752	748	748	747	748	751	752	757	758	761	762	761	761	759			
15	748	743	738	734	731	731	733	737	740	745	749	752	753	753	752	749			
20	732	726	719	714	711	710	713	718	722	729	734	738	740	740	738	735			
25	713	705	697	690	685	684	688	695	701	708	714	719	721	721	720	716			
30	687	678	669	661	655	654	659	666	673	682	689	695	697	697	696	691			
35	658	647	636	627	621	619	624	633	641	651	659	665	668	668	667	662			
40	622	611	599	588	582	580	585	594	603	615	624	630	634	635	633	627			
45	581	569	557	546	540	538	542	551	559	572	583	592	596	596	594	587			
50	534	522	510	501	496	493	494	502	510	525	539	549	554	554	550	542			
55	482	469	460	455	451	447	444	448	455	472	490	504	511	510	502	491			
60	423	412	407	409	407	402	394	390	394	415	438	457	467	465	453	436			
65	359	350	355	364	365	358	345	330	328	352	385	412	423	419	402	377			
70	289	286	305	321	325	317	298	270	258	287	333	366	380	375	353	315			
75	217	222	257	281	287	278	255	215	186	223	283	322	337	331	304	256			
80	146	165	214	244	253	243	215	166	120	166	236	280	298	291	258	200			
85	85.7	118	176	210	223	210	180	126	70.0	118	194	241	261	252	216	152			
90	54.2	84.3	142	179	195	182	149	96.2	52.1	84.8	157	206	227	216	178	112			
95	44.7	63.4	115	153	169	157	123	75.4	45.4	65.1	126	174	196	185	146	84.0			
100	40.0	52.8	94.4	131	147	136	104	63.6	41.5	56.9	103	148	168	157	118	67.3			
105	38.5	48.7	80.5	113	127	118	90.0	58.4	40.7	53.7	87.9	126	144	134	99.5	60.0			
110	39.3	46.9	72.9	99.0	111	104	81.4	56.1	41.9	53.1	80.4	110	124	115	87.7	57.5			
115	41.6	48.5	69.5	89.5	99.4	94.0	76.9	55.4	44.4	55.2	77.3	98.8	110	103	81.5	56.9			
120	44.7	50.3	67.2	83.6	91.3	87.4	73.9	57.0	47.5	57.0	75.1	92.6	100	94.7	78.3	58.2			
125	47.8	51.1	65.6	79.4	85.9	82.8	71.2	57.8	50.3	58.3	73.8	88.3	94.3	89.8	75.4	59.4			
130	50.5	52.9	65.7	75.5	81.3	78.7	69.7	57.9	52.9	59.4	73.3	84.5	89.5	85.5	73.6	61.0			
135	52.6	54.8	64.9	72.9	77.2	75.5	69.2	58.1	55.0	60.5	72.3	81.7	85.5	82.0	72.7	61.0			
140	53.9	55.9	64.3	71.6	74.6	73.6	68.0	58.8	56.8	61.3	71.7	80.2	82.3	79.7	71.3	61.7			
145	54.8	57.6	62.7	69.6	72.0	70.9	66.4	59.3	57.5	59.5	68.9	76.8	79.5	77.6	70.9	62.5			
150	56.1	57.2	62.6	66.8	69.9	68.9	65.0	60.0	57.8	60.1	67.2	73.6	76.9	76.1	69.8	63.2			
155	57.7	55.4	62.4	65.4	67.1	66.3	64.2	58.8	57.9	58.7	65.5	70.2	72.6	73.0	69.2	63.9			
160	54.6	54.7	62.8	64.0	65.8	65.2	62.4	52.4	55.9	51.7	60.5	67.0	69.8	70.9	68.6	62.1			
165	49.3	54.8	60.1	63.4	64.9	64.6	56.9	47.8	51.8	46.7	52.2	59.7	65.7	68.7	65.8	60.6			
170	46.0	52.7	56.3	57.9	61.3	61.9	48.8	45.5	44.2	43.2	47.6	53.7	56.6	66.6	63.7	57.3			
175	51.0	55.8	55.1	55.4	44.6	54.4	50.4	50.4	48.1	48.0	50.3	50.3	53.8	50.3	54.6	54.2			
180	58.4	58.2	57.1	51.7	61.3	44.6	56.5	57.1	58.5	58.7	58.7	56.9	48.2	57.8	44.9	54.3			

C Range: 0 - 360DEG
 C Interval: 22.5DEG
 Test Speed: 10.0deg/s
 Temperature:25.1DEG
 Operators:Arno
 Test Date:

γ Range: 0 - 180DEG
 γ Interval: 1.0DEG
 Test System:EVERFINE GO-R5000_V2 SYSTEM V2.0.351
 Humidity:44%
 Test Distance:2.500m [K=0.9819]
 Remarks: