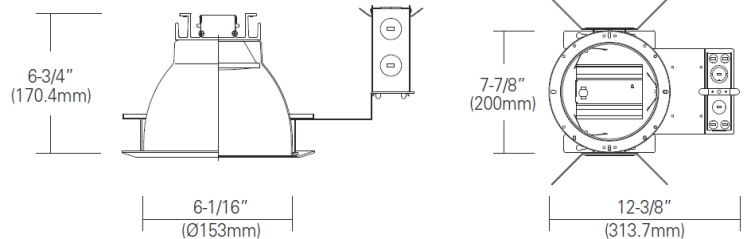
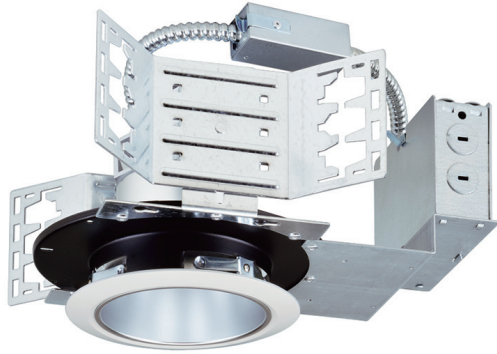


8124H

120V-277V Universal Voltage

Catalog #:		Type
Project:		Date
Prepared by:		

6" LED Architectural Housing



8124

6" LED Architectural Housing

DESCRIPTION

An ideal solution for efficiency, safety, and flexible design aesthetics. The 8124H housing - frame/module/trim combo balances power, efficiency and cost to bring you the options needed to complete a variety of residential or commercial projects with a reliable and modern LED down light solution.

DESIGN FEATURES

Electrical

- 120V-277V Universal Voltage
- Triac & 0-10V dimming with integral driver
- Suitable for use in damp locations, wet locations when used with 8653WH
- 50,000 hour projected life
- Beam angle 60°
- 14W, 1150lms | 23W, 1950lms | 30W, 2720lms | 45W, 3640lms
- Available in 3000K, 3500K, 4000K

Housing

- 14W, 23W, 30W, or 43W power options
- Sturdy aluminum construction
- Suitable for use in new construction applications
- 6-3/4" height allows for use in 2" x 8" joist construction

Junction Box

- Listed for through branch circuit wiring and includes five (5) 3/4" knockouts
- Easy access plate for quick wiring

Bar Hanger

- Heavy-gauge butterfly brackets provide flexible mounting options including EMT conduit, C-channel, and bar hanger
- Bar hanger sold separately
- Allows for precise placement of fixture

Dimensions

- Size: 12-3/8" x 7-7/8" x 6-3/4"
- Aperture: 6-1/16"

Option

- 8096B — Two Piece Bar Hangers 24" Joist Span



Emergency Option

- 8122H-__-__-EM

Certifications

- Energy Star - 3000K & 4000K Only
- cCSAus
- 5 year limited warranty



TEL: 800.937.6925 | Fax: 800.207.9509 | www.rplighting.com

Specifications and dimensions subject to change without notice.

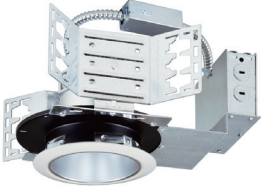
8124H

120V-277V Universal Voltage

Specification & Ordering


HOUSING

Example: 8124H-30-4K-EM

Housing #	Wattage	CCT	Emergency Battery Backup
	8124H		
	8124H	-14 : 14W, 1150lms -23 : 23W, 1950lms -30 : 30W, 2720lms -45 : 45W, 3640lms	-3K : 3000K -35K : 3500K -4K : 4000K
			-EM : EM adds Battery Pack

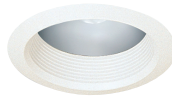
MODULE/TRIM

Example: 8651HZ

Module/Trim #	Finish
	8651
	8651 Haze cone reflector
	HZ : Haze


MODULE/TRIM

Example: 8652WH

Module/Trim #	Finish
	8652
	8652 Haze reflector with white baffle
	WH : White


MODULE/TRIM

Example: 8653WH

Module/Trim #	Finish
	8653
	8653 White reflector cone with wall wash
	WH : White


MODULE/TRIM

Example: 8654WH

Module/Trim #	Finish
	8654
	8654 White reflector with floating lens
	WH : White

MODULE/TRIM

Example: 8655WH

Module/Trim #	Finish
	8655
	8655 White reflector cone with wall wash
	WH : White

Compatible Dimmers:

- Lutron (Triac)
 - S-603PG, DVELV-303P, CT-103P, SELV-300P, DCVCL-153P, DV-600P, MAELV-600, FAELV-500, TCGL-153P, TG-600P, S-600P, LG-600P, IP106-1LZ, 6631-2, 6683-IW, IPE04, 6161, 6633-P, VPE06
- Cooper (Triac)
 - SLC03P, DLC03P, DAL06P
- Lutron (0-10V)
 - Nova series (part# NFTV)
- Leviton
 - Illuma Tech series (part# IP710-DL)