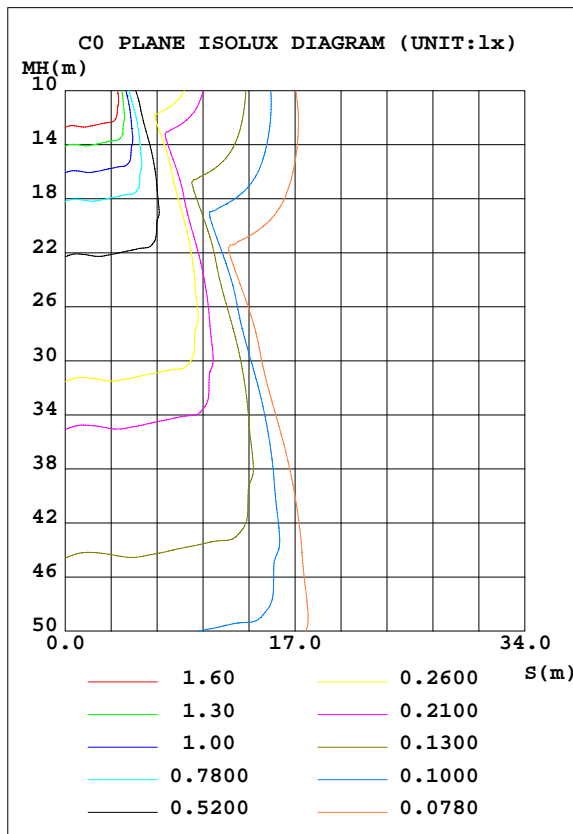
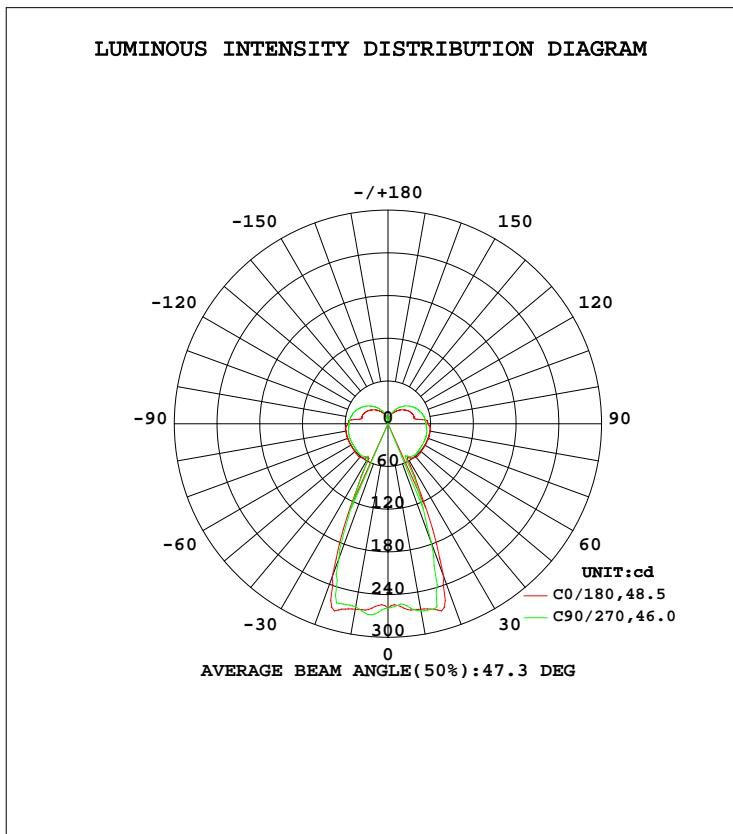


LUMINAIRE PHOTOMETRIC TEST REPORT

Test:U:120.0V I:0.0708A P:7.980W PF:0.9392 Lamp Flux:716.57x1 lm		
NAME: 4430	TYPE:N/A	WEIGHT:N/A
SPEC.:N/A	DIM.: N/A	SERIAL No.:N/A
MFR.:	SUR.:N/A	Shielding Angle:N/A

DATA OF LAMP		PHOTOMETRIC DATA Eff: 89.80 lm/W			
MODEL	4430	Imax(cd)	275.2	S/MH(C0/180)	0.71
NOMINAL POWER(W)	8	LOR(%)	100.0	S/MH(C90/270)	0.68
RATED VOLTAGE(V)	120	TOTAL FLUX(lm)	716.57	η UP, DN(C0-180)	17.8,33.1
NOMINAL FLUX(lm)	716.57	CIE CLASS	SEMI-D.	η UP, DN(C180-360)	17.1,32.0
LAMPS INSIDE	1	η up(%)	34.9	CIBSE SHR NOM	0.50
TEST VOLTAGE(V)	120	η down(%)	65.1	CIBSE SHR MAX	0.50



C Range: 0 - 360DEG
 C Interval: 22.5DEG
 Test Speed: 10.0deg/s
 Temperature:25.2DEG
 Operators:
 Test Date:2017-11-21

γ Range: 0 - 180DEG
 γ Interval: 1.0DEG
 Test System: GO-R5000_V2 SYSTEM V2.0.351
 Humidity:45%
 Test Distance:2.447m [K=1.0000]
 Remarks:

ZONAL FLUX DIAGRAM

ZONAL FLUX DIAGRAM:

γ	C0	C45	C90	C135	C180	C225	C270	C315	γ	Φ zone	Φ total	%lum,lamp
10	264.5	269.9	261.3	269.9	264.5	268.5	266.9	268.5	0- 10	25.07	25.07	3.5,3.5
20	229.5	202.2	202.2	202.2	229.5	201.6	179.3	201.6	10- 20	72.36	97.43	13.6,13.6
30	55.23	55.11	58.15	55.11	55.23	53.15	52.52	53.15	20- 30	51.62	149.1	20.8,20.8
40	61.39	61.36	58.49	61.36	61.39	59.22	57.92	59.22	30- 40	36.17	185.2	25.8,25.8
50	60.75	60.59	57.66	60.59	60.75	58.64	57.13	58.64	40- 50	46.42	231.6	32.3,32.3
60	60.35	60.17	57.37	60.17	60.35	57.96	56.73	57.96	50- 60	52.95	284.6	39.7,39.7
70	60.42	60.12	57.42	60.12	60.42	57.56	56.46	57.56	60- 70	58.40	343.0	47.9,47.9
80	60.08	59.03	56.57	59.03	60.08	56.30	55.39	56.30	70- 80	61.66	404.7	56.5,56.5
90	56.33	56.80	54.79	56.80	56.33	54.06	53.53	54.06	80- 90	61.72	466.4	65.1,65.1
100	39.09	54.71	53.20	54.71	39.09	52.34	51.94	52.34	90-100	58.90	525.3	73.3,73.3
110	37.55	50.93	49.86	50.93	37.55	49.13	48.91	49.13	100-110	52.92	578.2	80.7,80.7
120	34.69	45.88	44.94	45.88	34.69	44.38	44.49	44.38	110-120	45.76	623.9	87.1,87.1
130	30.36	39.76	38.81	39.76	30.36	38.28	38.83	38.28	120-130	36.36	660.3	92.1,92.1
140	25.29	32.77	31.77	32.77	25.29	30.73	31.97	30.73	130-140	26.32	686.6	95.8,95.8
150	19.80	25.28	24.24	25.28	19.80	23.00	24.24	23.00	140-150	17.00	703.6	98.2,98.2
160	13.94	17.31	16.37	17.31	13.94	15.04	15.48	15.04	150-160	9.185	712.8	99.5,99.5
170	7.809	9.171	8.309	9.171	7.809	5.322	2.256	5.322	160-170	3.330	716.1	99.9,99.9
180	0.2341	0	0	0	0.2341	0.2504	0.2579	0.2504	170-180	0.4343	716.6	100,100
DEG	LUMINOUS INTENSITY:cd Less than 25% Percent = 2.0 %									UNIT:lm		

Conical surface Flux(90deg): 207.51 lm

%lum = 29.0%
 %lamp = 29.0%

Conical surface Flux(120deg): 284.59 lm

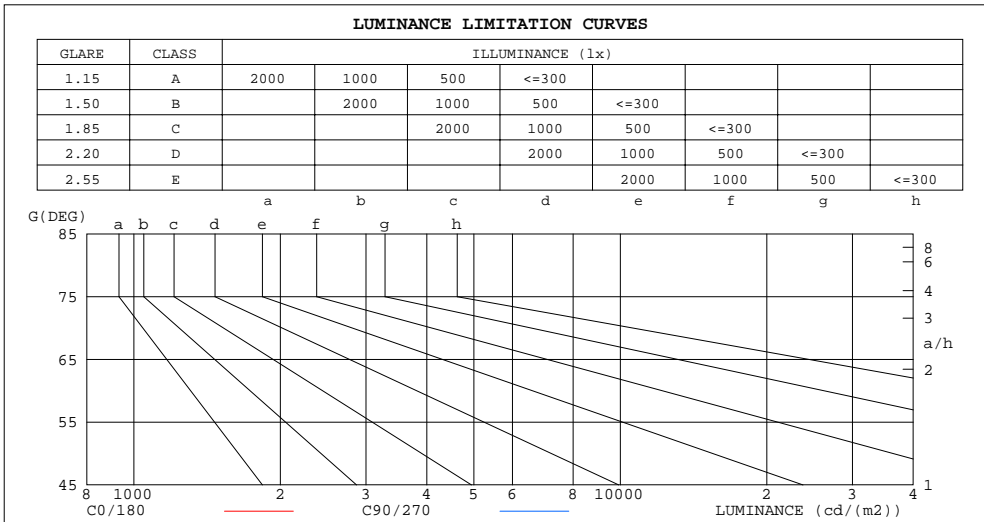
%lum = 39.7%
 %lamp = 39.7%

C Range: 0 - 360DEG
 C Interval: 22.5DEG
 Test Speed: 10.0deg/s
 Temperature:25.2DEG
 Operators:
 Test Date:2017-11-21

γ Range: 0 - 180DEG
 γ Interval: 1.0DEG
 Test System: GO-R5000_V2 SYSTEM V2.0.351
 Humidity:45%
 Test Distance:2.447m [K=1.0000]
 Remarks:

LUMINANCE LIMITATION CURVES

Test:U:120.0V I:0.0708A P:7.980W PF:0.9392 Lamp Flux:716.57x1 lm		
NAME: 4430	TYPE:N/A	WEIGHT:N/A
SPEC.:N/A	DIM.: N/A	SERIAL No.:N/A
MFR.:	SUR.:N/A	Shielding Angle:N/A



LUMINANCE cd/(m2)		
G(DEG)	C0/180	C90/270
85	6816431	6379659
80	3454234	3256851
75	2328158	2206659
70	1763860	1678602
65	1426723	1358953
60	1205130	1147148
55	1051579	999704
50	943569	896766
45	868348	825236

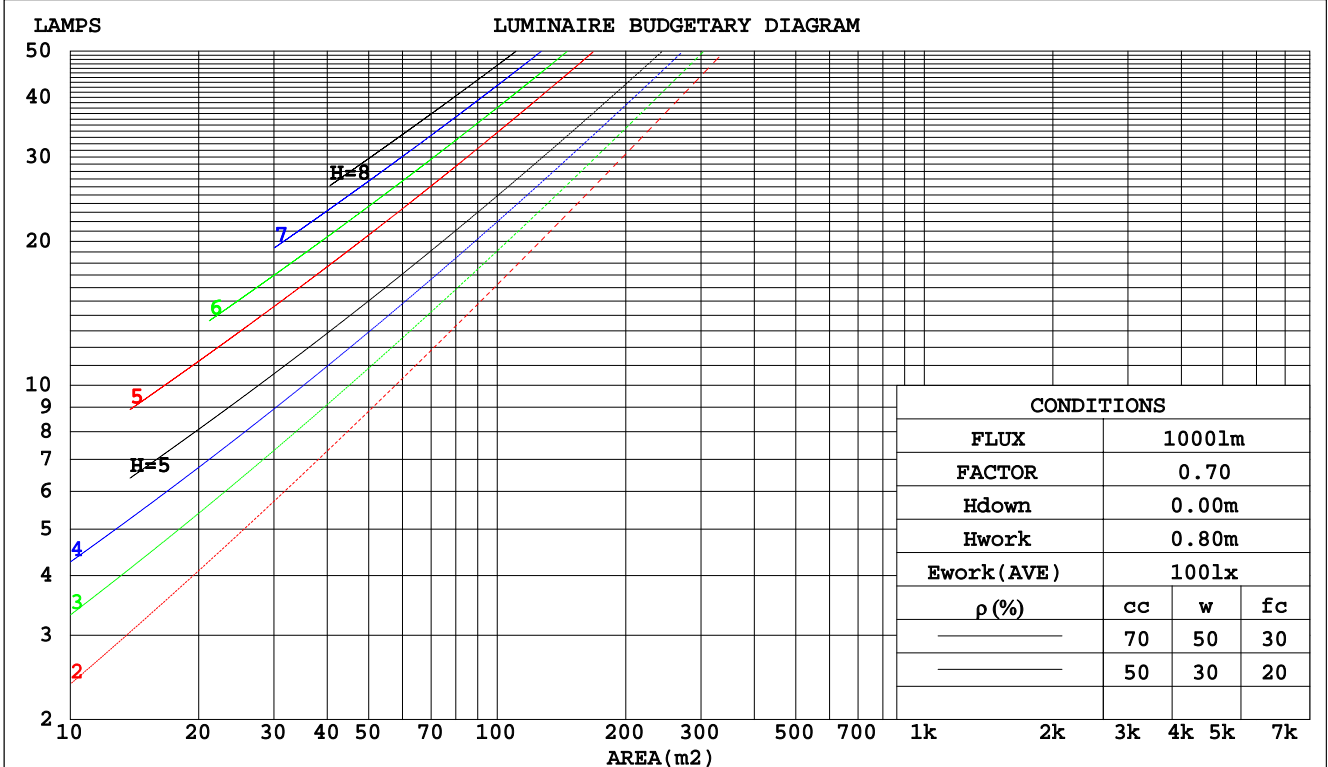
C Range: 0 - 360DEG
 C Interval: 22.5DEG
 Test Speed: 10.0deg/s
 Temperature:25.2DEG
 Operators:
 Test Date:2017-11-21

γ Range: 0 - 180DEG
 γ Interval: 1.0DEG
 Test System: GO-R5000_V2 SYSTEM V2.0.351
 Humidity:45%
 Test Distance:2.447m [K=1.0000]
 Remarks:

CU AND LUMINAIRE BUDGETARY ESTIMATE DIAGRAM

Test:U:120.0V I:0.0708A P:7.980W PF:0.9392 Lamp Flux:716.57x1 lm		
NAME:4430	TYPE:N/A	WEIGHT:N/A
SPEC.:N/A	DIM.: N/A	SERIAL No.:N/A
MFR.:	SUR.:N/A	Shielding Angle:N/A

pcc	80%			70%			50%			30%			10%			0
	50%	30%	10%	50%	30%	10%	50%	30%	10%	50%	30%	10%	50%	30%	10%	0
pw																0
pfc	20%			20%			20%			20%			20%			0
RCR	RCR:Room Cavity Ratio						Coefficients of Utilization(CU)									
0.0	1.11	1.11	1.11	1.04	1.04	1.04	.92	.92	.92	.80	.80	.80	.70	.70	.70	.65
1.0	.92	.87	.82	.86	.81	.77	.75	.72	.68	.66	.63	.60	.56	.54	.52	.48
2.0	.79	.72	.65	.74	.68	.62	.65	.60	.55	.57	.52	.49	.49	.45	.43	.39
3.0	.69	.61	.54	.65	.58	.51	.57	.51	.46	.50	.45	.41	.43	.39	.36	.32
4.0	.62	.53	.46	.58	.50	.44	.51	.45	.40	.45	.40	.35	.39	.35	.31	.28
5.0	.55	.47	.40	.52	.44	.38	.46	.40	.35	.41	.35	.31	.35	.31	.28	.25
6.0	.50	.42	.35	.47	.40	.34	.42	.36	.31	.37	.32	.28	.33	.28	.25	.22
7.0	.46	.38	.32	.43	.36	.30	.39	.32	.28	.34	.29	.25	.30	.26	.23	.20
8.0	.42	.34	.29	.40	.33	.27	.36	.30	.25	.32	.27	.23	.28	.24	.21	.19
9.0	.39	.31	.26	.37	.30	.25	.33	.27	.23	.30	.25	.21	.27	.22	.19	.17
10.0	.36	.29	.24	.35	.28	.23	.31	.25	.21	.28	.23	.20	.25	.21	.18	.16



C Range: 0 - 360DEG
 C Interval: 22.5DEG
 Test Speed: 10.0deg/s
 Temperature:25.2DEG
 Operators:
 Test Date:2017-11-21

γ Range: 0 - 180DEG
 γ Interval: 1.0DEG
 Test System: GO-R5000_V2 SYSTEM V2.0.351
 Humidity:45%
 Test Distance:2.447m [K=1.0000]
 Remarks:

WEC AND CCEC

Test:U:120.0V I:0.0708A P:7.980W PF:0.9392 Lamp Flux:716.57x1 lm		
NAME: 4430	TYPE:N/A	WEIGHT:N/A
SPEC.:N/A	DIM.: N/A	SERIAL No.:N/A
MFR.:	SUR.:N/A	Shielding Angle:N/A

ρcc	80%			70%			50%			30%			10%			0
ρw	50%	30%	10%	50%	30%	10%	50%	30%	10%	50%	30%	10%	50%	30%	10%	0
ρfc	20%			20%			20%			20%			20%			0
RCR	RCR:Room Cavity Ratio						Wall Exitance Coefficients(WEC)									
0.0																
1.0	.380	.216	.068	.362	.206	.066	.329	.188	.060	.298	.172	.055	.270	.156	.050	
2.0	.319	.175	.054	.303	.167	.051	.272	.151	.047	.244	.137	.043	.219	.124	.039	
3.0	.279	.149	.044	.264	.142	.043	.237	.128	.039	.211	.116	.036	.188	.104	.032	
4.0	.249	.129	.038	.236	.123	.036	.211	.112	.033	.187	.101	.030	.166	.090	.027	
5.0	.225	.115	.033	.213	.109	.032	.190	.099	.029	.169	.089	.026	.149	.080	.024	
6.0	.206	.103	.030	.195	.098	.028	.174	.089	.026	.154	.080	.024	.135	.071	.021	
7.0	.190	.094	.027	.179	.089	.025	.160	.081	.023	.142	.073	.021	.125	.065	.019	
8.0	.176	.086	.024	.166	.082	.023	.148	.074	.021	.131	.067	.019	.115	.059	.017	
9.0	.164	.079	.022	.155	.076	.021	.138	.068	.019	.122	.061	.018	.108	.055	.016	
10.0	.153	.073	.020	.145	.070	.020	.129	.063	.018	.115	.057	.016	.101	.051	.015	

ρcc	80%			70%			50%			30%			10%			0
ρw	50%	30%	10%	50%	30%	10%	50%	30%	10%	50%	30%	10%	50%	30%	10%	0
ρfc	20%			20%			20%			20%			20%			0
RCR	RCR:Room Cavity Ratio						Ceiling Cavity Exitance Coefficients(CCEC)									
0.0	.457	.457	.457	.390	.390	.390	.266	.266	.266	.153	.153	.153	.049	.049	.049	
1.0	.453	.424	.397	.388	.364	.342	.265	.250	.236	.153	.145	.137	.049	.047	.044	
2.0	.446	.402	.365	.382	.346	.315	.262	.239	.220	.151	.139	.129	.048	.045	.042	
3.0	.438	.386	.344	.375	.333	.299	.258	.231	.209	.149	.135	.123	.048	.044	.040	
4.0	.430	.374	.331	.369	.323	.288	.253	.225	.202	.147	.132	.120	.047	.043	.039	
5.0	.422	.364	.322	.362	.315	.280	.249	.220	.198	.144	.129	.117	.047	.042	.039	
6.0	.414	.356	.315	.356	.309	.274	.246	.216	.194	.142	.127	.115	.046	.042	.038	
7.0	.407	.350	.310	.350	.303	.270	.242	.213	.191	.141	.125	.114	.045	.041	.038	
8.0	.401	.344	.306	.345	.299	.267	.239	.210	.189	.139	.124	.113	.045	.041	.037	
9.0	.394	.340	.303	.340	.295	.264	.235	.207	.187	.137	.122	.112	.044	.040	.037	
10.0	.389	.336	.300	.335	.291	.262	.233	.205	.186	.136	.121	.111	.044	.040	.037	

C Range: 0 - 360DEG
 C Interval: 22.5DEG
 Test Speed: 10.0deg/s
 Temperature:25.2DEG
 Operators:
 Test Date:2017-11-21

γ Range: 0 - 180DEG
 γ Interval: 1.0DEG
 Test System: GO-R5000_V2 SYSTEM V2.0.351
 Humidity:45%
 Test Distance:2.447m [K=1.0000]
 Remarks:

UGR(Unified Glare Rating) Table

Test:U:120.0V I:0.0708A P:7.980W PF:0.9392 Lamp Flux:716.57x1 lm										
NAME: 4430					TYPE:N/A			WEIGHT:N/A		
SPEC.:N/A					DIM.: N/A			SERIAL No.:N/A		
MFR.:					SUR.:N/A			Shielding Angle:N/A		
ceiling/cavity	0.7	0.7	0.5	0.5	0.3	0.7	0.7	0.5	0.5	0.3
walls	0.5	0.3	0.5	0.3	0.3	0.5	0.3	0.5	0.3	0.3
working plane	0.2	0.2	0.2	0.2	0.2	0.2	0.2	0.2	0.2	0.2
Room dimensions	Viewed crosswise					Viewed endwise				
x = 2H y = 2H	34.2	35.3	34.9	36.0	36.9	34.0	35.1	34.7	35.8	36.7
3H	37.4	38.4	38.1	39.2	40.1	37.2	38.2	37.9	38.9	39.8
4H	39.2	40.2	40.0	40.9	41.9	38.9	39.9	39.7	40.7	41.6
6H	41.2	42.1	42.0	42.9	43.9	40.9	41.8	41.7	42.6	43.6
8H	42.3	43.2	43.1	44.0	45.0	42.0	42.9	42.8	43.7	44.7
12H	43.6	44.5	44.4	45.3	46.3	43.3	44.1	44.1	44.9	45.9
4H 2H	35.2	36.2	36.0	36.9	37.9	35.1	36.1	35.8	36.8	37.7
3H	38.5	39.4	39.3	40.2	41.2	38.4	39.2	39.1	40.0	41.0
4H	40.5	41.3	41.3	42.1	43.1	40.3	41.1	41.1	41.9	42.9
6H	42.6	43.3	43.5	44.2	45.2	42.4	43.1	43.2	43.9	45.0
8H	43.8	44.5	44.7	45.3	46.4	43.6	44.2	44.4	45.1	46.1
12H	45.2	45.8	46.1	46.7	47.8	44.9	45.5	45.8	46.4	47.5
8H 4H	41.2	41.8	42.0	42.7	43.7	41.0	41.7	41.9	42.5	43.6
6H	43.6	44.2	44.5	45.0	46.1	43.4	44.0	44.3	44.9	45.9
8H	45.0	45.5	45.9	46.4	47.5	44.8	45.3	45.7	46.2	47.3
12H	46.6	47.0	47.5	47.9	49.1	46.3	46.8	47.2	47.7	48.8
12H 4H	41.4	42.0	42.2	42.8	43.9	41.2	41.8	42.1	42.7	43.8
6H	43.9	44.4	44.8	45.3	46.4	43.7	44.3	44.6	45.1	46.2
8H	45.4	45.8	46.3	46.8	47.9	45.2	45.7	46.1	46.6	47.7
Variations with the observer position at spacings:										
S = 1.0H	+ 0.1 / - 0.1					+ 0.1 / - 0.1				
1.5H	+ 0.2 / - 0.3					+ 0.2 / - 0.3				
2.0H	+ 0.3 / - 0.4					+ 0.3 / - 0.4				

CIE Pub.117 Corrected 716.6 lm Total Lamp Luminous Flux.(8log(F/F0) = -1.2)

C Range: 0 - 360DEG
 C Interval: 22.5DEG
 Test Speed: 10.0deg/s
 Temperature:25.2DEG
 Operators:
 Test Date:2017-11-21

γ Range: 0 - 180DEG
 γInterval: 1.0DEG
 Test System: GO-R5000_V2 SYSTEM V2.0.351
 Humidity:45%
 Test Distance:2.447m [K=1.0000]
 Remarks:

UTILIZATION FACTORS TABLE

Test:U:120.0V I:0.0708A P:7.980W PF:0.9392 Lamp Flux:716.57x1 lm		
NAME: 4430	TYPE:N/A	WEIGHT:N/A
SPEC.:N/A	DIM.: N/A	SERIAL No.:N/A
MFR.:	SUR.:N/A	Shielding Angle:N/A

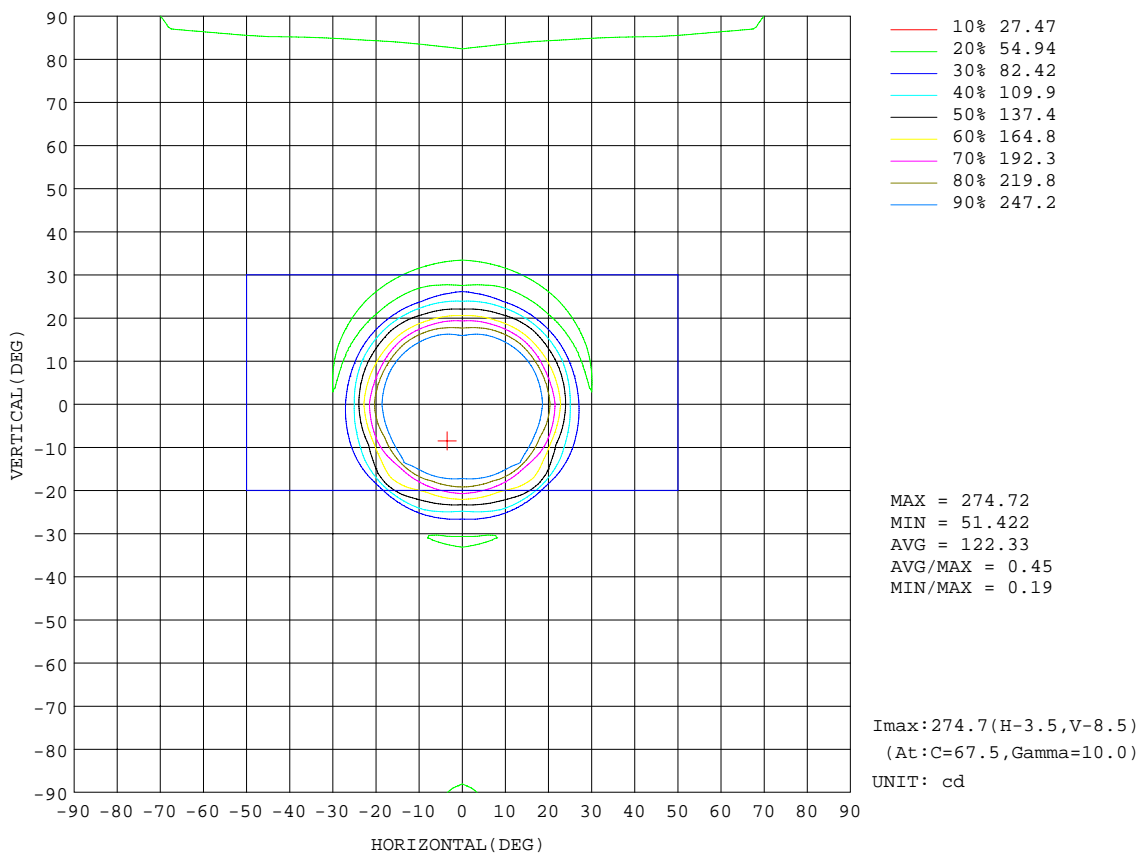
REFLECTANCE										
Ceiling	0.8	0.8	0.8	0.7	0.7	0.7	0.5	0.5	0.5	0
Walls	0.7	0.5	0.3	0.7	0.5	0.3	0.7	0.5	0.3	0
Working plane	0.2	0.2	0.2	0.2	0.2	0.2	0.2	0.2	0.2	0
ROOM INDEX	UTILIZATION FACTORS(PERCENT) $k(RI) \times RCR = 5$									
k = 0.60	46	34	27	44	33	27	42	32	26	20
0.80	54	42	34	52	40	33	48	38	32	24
1.00	61	48	40	58	47	39	53	45	37	27
1.25	67	55	46	64	53	45	58	49	42	31
1.50	72	60	51	69	57	49	62	53	46	33
2.00	79	68	59	75	64	57	67	59	52	38
2.50	84	73	65	79	69	62	70	63	57	40
3.00	87	77	69	82	73	66	73	66	61	43
4.00	92	83	76	87	79	73	77	71	66	47
5.00	95	88	81	89	83	77	79	74	70	49
ROOM INDEX	UF(total)									Direct
According to DIN EN 13032-2 2004			Suspended				SHRNOM = 1.25			

C Range: 0 - 360DEG
 C Interval: 22.5DEG
 Test Speed: 10.0deg/s
 Temperature:25.2DEG
 Operators:
 Test Date:2017-11-21

γ Range: 0 - 180DEG
 γ Interval: 1.0DEG
 Test System: GO-R5000_V2 SYSTEM V2.0.351
 Humidity:45%
 Test Distance:2.447m [K=1.0000]
 Remarks:

ISOCANDELA DIAGRAM

Test:U:120.0V I:0.0708A P:7.980W PF:0.9392 Lamp Flux:716.57x1 lm		
NAME: 4430	TYPE:N/A	WEIGHT:N/A
SPEC.:N/A	DIM.: N/A	SERIAL No.:N/A
MFR.:	SUR.:N/A	Shielding Angle:N/A

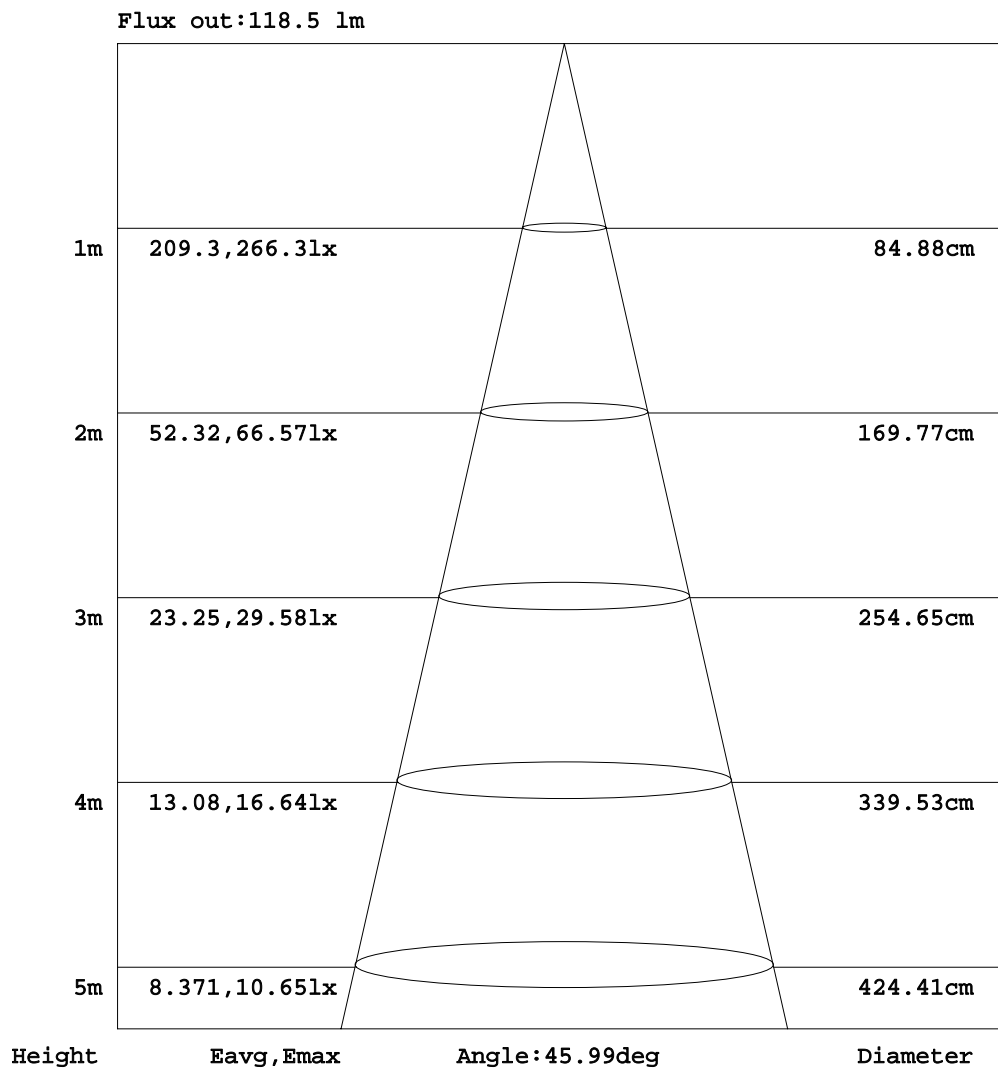


C Range: 0 - 360DEG
 C Interval: 22.5DEG
 Test Speed: 10.0deg/s
 Temperature:25.2DEG
 Operators:
 Test Date:2017-11-21

γ Range: 0 - 180DEG
 γ Interval: 1.0DEG
 Test System: GO-R5000_V2 SYSTEM V2.0.351
 Humidity:45%
 Test Distance:2.447m [K=1.0000]
 Remarks:

AAI Figure

Test:U:120.0V I:0.0708A P:7.980W PF:0.9392 Lamp Flux:716.57x1 lm		
NAME: 4430	TYPE:N/A	WEIGHT:N/A
SPEC.:N/A	DIM.: N/A	SERIAL No.:N/A
MFR.:	SUR.:N/A	Shielding Angle:N/A



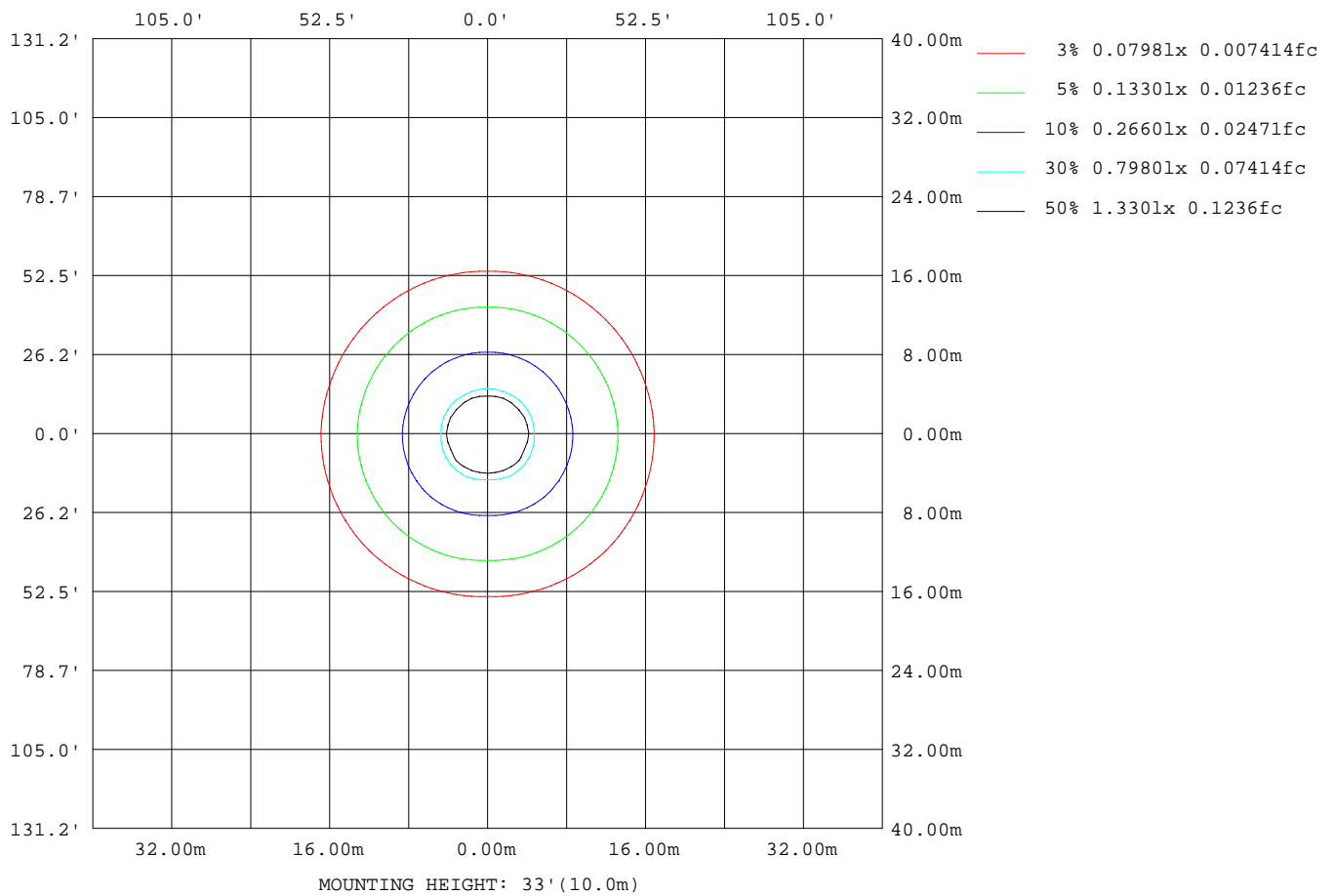
Note:The Curves indicate the illuminated area and the average illumination when the luminaire is at different distance.

C Range: 0 - 360DEG
 C Interval: 22.5DEG
 Test Speed: 10.0deg/s
 Temperature:25.2DEG
 Operators:
 Test Date:2017-11-21

γ Range: 0 - 180DEG
 γInterval: 1.0DEG
 Test System: GO-R5000_V2 SYSTEM V2.0.351
 Humidity:45%
 Test Distance:2.447m [K=1.0000]
 Remarks:

ISOLUX DIAGRAM

Test:U:120.0V I:0.0708A P:7.980W PF:0.9392 Lamp Flux:716.57x1 lm		
NAME: 4430	TYPE:N/A	WEIGHT:N/A
SPEC.:N/A	DIM.: N/A	SERIAL No.:N/A
MFR.:	SUR.:N/A	Shielding Angle:N/A



C Range: 0 - 360DEG
 C Interval: 22.5DEG
 Test Speed: 10.0deg/s
 Temperature:25.2DEG
 Operators:
 Test Date:2017-11-21

γ Range: 0 - 180DEG
 γ Interval: 1.0DEG
 Test System: GO-R5000_V2 SYSTEM V2.0.351
 Humidity:45%
 Test Distance:2.447m [K=1.0000]
 Remarks:

LED Avg.L Report

Test:U:120.0V I:0.0708A P:7.980W PF:0.9392 Lamp Flux:716.57x1 lm		
NAME: 4430	TYPE:N/A	WEIGHT:N/A
SPEC.:N/A	DIM.: N/A	SERIAL No.:N/A
MFR.:	SUR.:N/A	Shielding Angle:N/A

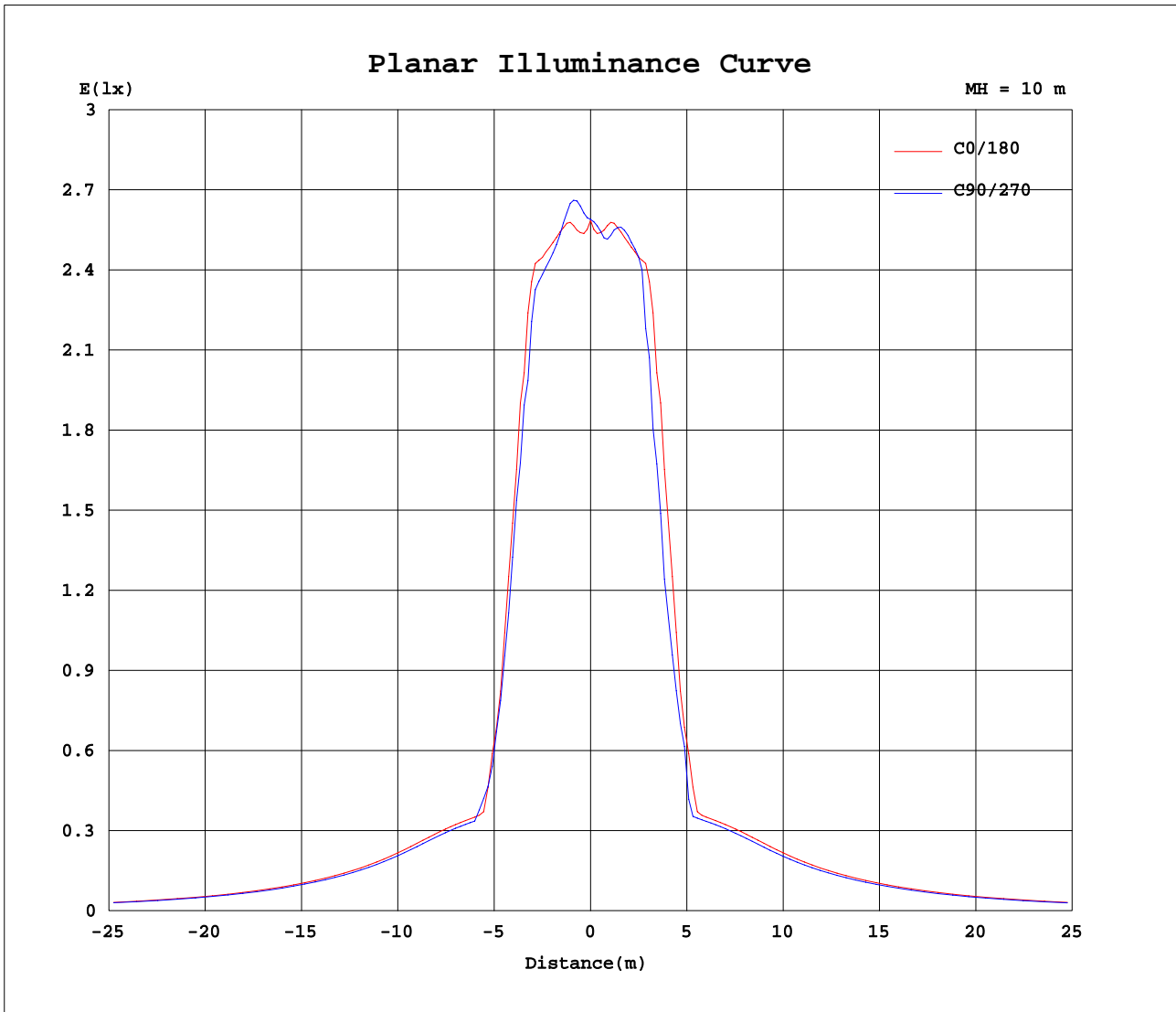
AvgL	cd/m2
L_0~180(65)av	1428985
L_0~180(75)av	2331848
L_0~180(85)av	6827237
L_90~270(65)av	1350126
L_90~270(75)av	2186712
L_90~270(85)av	6314135
L_45(65)av	1396134
L_45(75)av	2257190
L_45(85)av	6494622

Standard: GB/T 29293-2012

C Range: 0 - 360DEG
 C Interval: 22.5DEG
 Test Speed: 10.0deg/s
 Temperature:25.2DEG
 Operators:
 Test Date:2017-11-21

γ Range: 0 - 180DEG
 γ Interval: 1.0DEG
 Test System: GO-R5000_V2 SYSTEM V2.0.351
 Humidity:45%
 Test Distance:2.447m [K=1.0000]
 Remarks:

Planar Illuminance Curve



C Range: 0 - 360DEG
 C Interval: 22.5DEG
 Test Speed: 10.0deg/s
 Temperature: 25.2DEG
 Operators:
 Test Date: 2017-11-21

γ Range: 0 - 180DEG
 γ Interval: 1.0DEG
 Test System: GO-R5000_V2 SYSTEM V2.0.351
 Humidity: 45%
 Test Distance: 2.447m [K=1.0000]
 Remarks:

LUMINOUS DISTRIBUTION INTENSITY DATA

Test:U:120.0V I:0.0708A P:7.980W PF:0.9392 Lamp Flux:716.57x1 lm		
NAME: 4430	TYPE:N/A	WEIGHT:N/A
SPEC.:N/A	DIM.: N/A	SERIAL No.:N/A
MFR.:	SUR.:N/A	Shielding Angle:N/A

Table--1

UNIT: cd

C(DEG) γ (DEG)	0	22.5	45	67.5	90	112.5	135	157.5	180	202.5	225	247.5	270	292.5	315	337.5			
0	259	259	259	259	259	259	259	259	259	259	259	259	259	259	259	259			
5	260	262	264	267	269	267	264	262	260	254	253	255	255	255	253	254			
10	264	262	270	275	261	275	270	262	264	263	269	265	267	265	269	263			
15	271	268	270	270	262	270	270	268	271	273	273	265	266	265	273	273			
20	230	214	202	208	202	208	202	214	230	214	202	185	179	185	202	214			
25	111	116	150	123	106	123	150	116	111	114	104	91.0	94.2	91.0	104	114			
30	55.2	55.5	55.1	56.2	58.2	56.2	55.1	55.5	55.2	53.7	53.2	52.8	52.5	52.8	53.2	53.7			
35	58.9	59.1	58.7	57.6	56.3	57.6	58.7	59.1	58.9	57.5	56.8	56.4	56.0	56.4	56.8	57.5			
40	61.4	61.6	61.4	60.0	58.5	60.0	61.4	61.6	61.4	60.1	59.2	58.5	57.9	58.5	59.2	60.1			
45	61.5	61.7	61.4	60.0	58.4	60.0	61.4	61.7	61.5	60.3	59.3	58.5	57.8	58.5	59.3	60.3			
50	60.7	60.9	60.6	59.2	57.7	59.2	60.6	60.9	60.7	59.5	58.6	57.9	57.1	57.9	58.6	59.5			
55	60.4	60.5	60.2	59.0	57.4	59.0	60.2	60.5	60.4	59.0	58.1	57.5	56.8	57.5	58.1	59.0			
60	60.4	60.4	60.2	59.0	57.4	59.0	60.2	60.4	60.4	58.8	58.0	57.4	56.7	57.4	58.0	58.8			
65	60.4	60.4	60.2	59.0	57.4	59.0	60.2	60.4	60.4	58.6	57.8	57.3	56.7	57.3	57.8	58.6			
70	60.4	60.3	60.1	58.9	57.4	58.9	60.1	60.3	60.4	58.3	57.6	57.1	56.5	57.1	57.6	58.3			
75	60.4	59.9	59.7	58.6	57.1	58.6	59.7	59.9	60.4	57.8	57.1	56.6	56.1	56.6	57.1	57.8			
80	60.1	59.1	59.0	57.9	56.6	57.9	59.0	59.1	60.1	57.0	56.3	55.9	55.4	55.9	56.3	57.0			
85	59.5	58.0	57.9	56.9	55.6	56.9	57.9	58.0	59.5	55.9	55.3	54.8	54.4	54.8	55.3	55.9			
90	56.3	56.8	56.8	55.9	54.8	55.9	56.8	56.8	56.3	54.6	54.1	53.8	53.5	53.8	54.1	54.6			
95	55.2	56.0	56.0	55.3	54.2	55.3	56.0	56.0	55.2	53.9	53.4	53.1	52.9	53.1	53.4	53.9			
100	39.1	54.7	54.7	54.2	53.2	54.2	54.7	54.7	39.1	52.8	52.3	52.2	51.9	52.2	52.3	52.8			
105	37.9	53.0	52.9	52.5	51.7	52.5	52.9	53.0	37.9	51.3	51.0	50.8	50.6	50.8	51.0	51.3			
110	37.5	51.0	50.9	50.6	49.9	50.6	50.9	51.0	37.5	49.1	49.1	49.1	48.9	49.1	49.1	49.1			
115	36.4	48.6	48.6	48.2	47.5	48.2	48.6	48.6	36.4	46.1	47.0	47.0	46.9	47.0	47.0	46.1			
120	34.7	46.0	45.9	45.6	44.9	45.6	45.9	46.0	34.7	42.2	44.4	44.6	44.5	44.6	44.4	42.2			
125	32.7	43.1	43.0	42.6	42.0	42.6	43.0	43.1	32.7	37.5	41.5	41.9	41.8	41.9	41.5	37.5			
130	30.4	39.9	39.8	39.4	38.8	39.4	39.8	39.9	30.4	32.9	38.3	38.8	38.8	38.8	38.3	32.9			
135	27.9	36.5	36.3	36.0	35.4	36.0	36.3	36.5	27.9	29.0	34.7	35.5	35.5	35.5	34.7	29.0			
140	25.3	32.8	32.8	32.3	31.8	32.3	32.8	32.8	25.3	25.6	30.7	32.0	32.0	32.0	30.7	25.6			
145	22.6	29.0	29.1	28.6	28.0	28.6	29.1	29.0	22.6	22.7	26.8	28.4	28.2	28.4	26.8	22.7			
150	19.8	25.1	25.3	24.8	24.2	24.8	25.3	25.1	19.8	19.9	23.0	24.6	24.2	24.6	23.0	19.9			
155	16.9	21.0	21.4	20.9	20.3	20.9	21.4	21.0	16.9	17.0	19.2	20.6	20.2	20.6	19.2	17.0			
160	13.9	16.8	17.3	16.9	16.4	16.9	17.3	16.8	13.9	14.0	15.0	16.2	15.5	16.2	15.0	14.0			
165	10.9	12.7	13.2	12.9	12.4	12.9	13.2	12.7	10.9	10.7	9.85	9.78	8.64	9.78	9.85	10.7			
170	7.81	8.71	9.17	8.86	8.31	8.86	9.17	8.71	7.81	7.01	5.32	2.39	2.26	2.39	5.32	7.01			
175	4.17	4.76	5.06	4.78	4.31	4.78	5.06	4.76	4.17	2.85	2.30	1.19	0.58	1.19	2.30	2.85			
180	0.23	0.00	0.00	0.00	0.00	0.00	0.00	0.00	0.23	0.22	0.25	0.25	0.26	0.25	0.25	0.22			

C Range: 0 - 360DEG
 C Interval: 22.5DEG
 Test Speed: 10.0deg/s
 Temperature:25.2DEG
 Operators:
 Test Date:2017-11-21

γ Range: 0 - 180DEG
 γInterval: 1.0DEG
 Test System: GO-R5000_V2 SYSTEM V2.0.351
 Humidity:45%
 Test Distance:2.447m [K=1.0000]
 Remarks: