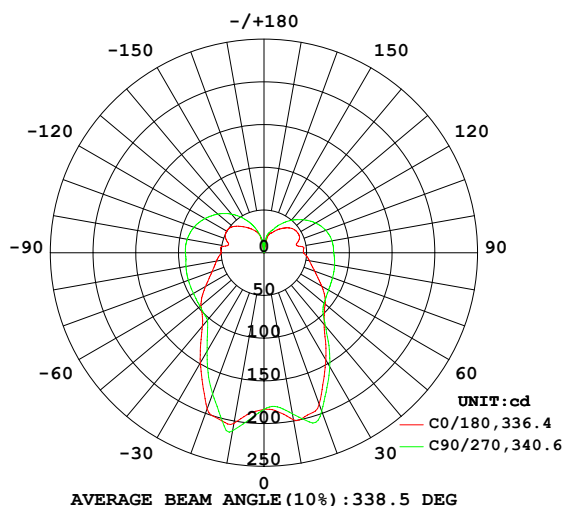


LUMINAIRE PHOTOMETRIC TEST REPORT

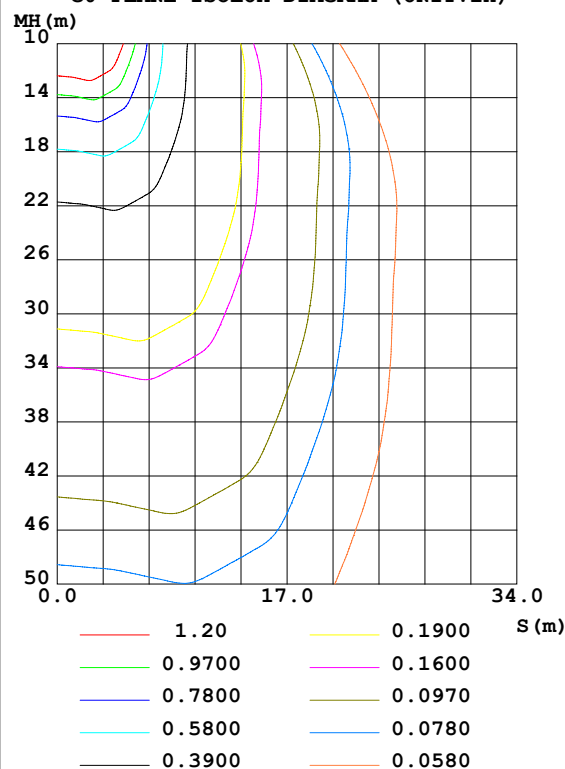
Test:U:120.0V I:0.1255A P:14.77W PF:0.9806 Lamp Flux:1053.73x1 lm		
NAME:4904BN-2	TYPE:N/A	WEIGHT:N/A
SPEC.:	DIM.: N/A	SERIAL No.:N/A
N/A MFR.:	SUR.:N/A	Shielding Angle:N/A

DATA OF LAMP		PHOTOMETRIC DATA Eff: 71.34 lm/W			
MODEL	4904-2	Imax (cd)	213.9	S/MH (C0/180)	1.18
NOMINAL POWER (W)	15	LOR (%)	100.0	S/MH (C90/270)	1.23
RATED VOLTAGE (V)	120	TOTAL FLUX (lm)	1053.7	η UP,DN (C0-180)	20.4,31.6
NOMINAL FLUX (lm)	1053.73	CIE CLASS	SEMI-D.	η UP,DN (C180-360)	16.8,31.3
LAMPS INSIDE	1	η up (%)	37.2	CIBSE SHR NOM	1.25
TEST VOLTAGE (V)	120	η down (%)	62.8	CIBSE SHR MAX	1.25

LUMINOUS INTENSITY DISTRIBUTION DIAGRAM



C0 PLANE ISOLUX DIAGRAM (UNIT:lx)



C Range: 0 - 360DEG
 C Interval: 22.5DEG
 Test Speed: 10.0deg/s
 Temperature: 25.2DEG
 Operators: Monkey

γ Range: 0 - 180DEG
 γ Interval: 1.0DEG
 Test System: EVERFINE GO-R5000_V2 SYSTEM V2.0.351
 Humidity: 45%
 Test Distance: 2.447m [K=1.0000]
 Remarks:

ZONAL FLUX DIAGRAM

ZONAL FLUX DIAGRAM:

γ	C0	C45	C90	C135	C180	C225	C270	C315	γ	Φ zone	Φ total	%lum, lamp
10	202.6	208.1	211.6	206.7	198.4	191.5	191.3	194.7	0- 10	18.36	18.36	1.74,1.74
20	194.5	181.3	175.8	177.1	188.8	194.7	197.5	198.2	10- 20	56.26	74.63	7.08,7.08
30	149.1	140.2	133.4	135.3	144.6	151.9	153.9	155.1	20- 30	76.47	151.1	14.3,14.3
40	112.4	107.3	103.1	104.9	109.7	113.6	111.9	115.0	30- 40	79.02	230.1	21.8,21.8
50	96.36	99.18	97.75	96.68	93.58	94.36	91.86	96.95	40- 50	78.34	308.5	29.3,29.3
60	79.11	96.73	95.35	94.18	78.01	90.36	87.42	92.69	50- 60	83.80	392.3	37.2,37.2
70	64.64	95.93	94.25	92.93	63.16	88.43	85.48	90.85	60- 70	88.34	480.6	45.6,45.6
80	56.66	94.73	92.76	91.33	53.97	86.53	83.90	88.65	70- 80	90.94	571.5	54.2,54.2
90	50.31	94.01	92.14	90.57	46.31	83.32	81.76	85.70	80- 90	90.69	662.2	62.8,62.8
100	45.80	93.93	91.24	90.28	43.26	79.09	80.91	81.72	90-100	88.98	751.2	71.3,71.3
110	47.57	89.76	87.30	86.13	43.58	69.32	77.05	72.28	100-110	82.51	833.7	79.1,79.1
120	50.71	82.06	79.98	78.48	45.97	56.56	69.87	59.63	110-120	71.71	905.4	85.9,85.9
130	47.67	72.50	70.48	69.11	43.88	44.41	60.27	47.40	120-130	57.25	962.7	91.4,91.4
140	40.13	60.93	59.10	57.78	38.01	33.35	49.56	37.09	130-140	41.44	1004	95.3,95.3
150	32.97	46.96	45.59	44.18	30.95	27.32	38.64	30.70	140-150	26.81	1031	97.8,97.8
160	26.47	30.95	31.55	28.99	24.83	23.29	28.14	26.20	150-160	15.10	1046	99.3,99.3
170	14.69	17.32	17.36	15.34	15.37	16.53	20.20	20.83	160-170	6.566	1053	99.9,99.9
180	8.655	4.511	2.740	5.348	7.169	6.278	1.094	0.3275	170-180	1.141	1054	100,100
DEG	LUMINOUS INTENSITY:cd Less than 25% Percent = 50.8 %									UNIT:lm		

Conical surface Flux(90deg): 268.86 lm

%lum = 25.5%

%lamp = 25.5%

Conical surface Flux(120deg): 392.26 lm

%lum = 37.2%

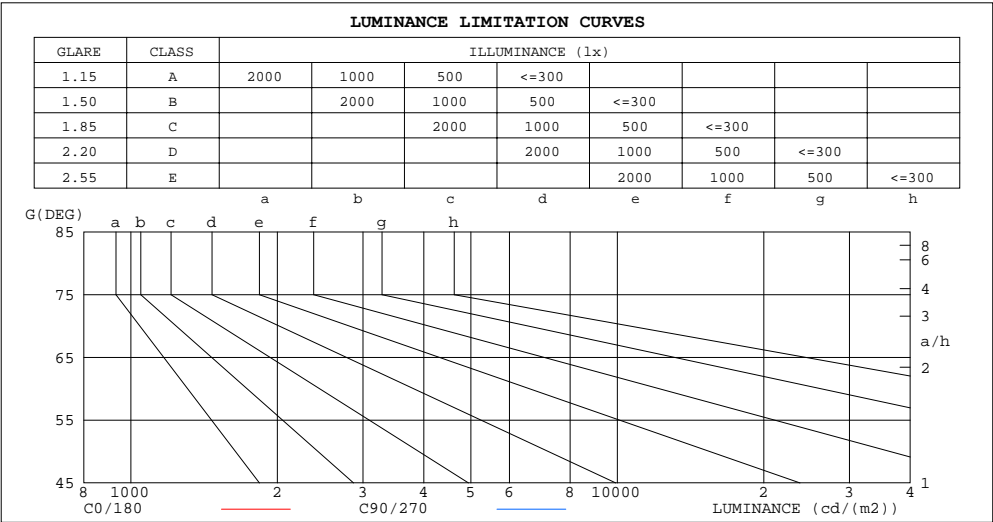
%lamp = 37.2%

C Range: 0 - 360DEG
 C Interval: 22.5DEG
 Test Speed: 10.0deg/s
 Temperature:25.2DEG
 Operators:Monkey

γ Range: 0 - 180DEG
 γ Interval: 1.0DEG
 γ Test System:EVERFINE GO-R5000_V2 SYSTEM V2.0.351
 Humidity:45%
 Test Distance:2.447m [K=1.0000]
 Remarks:

LUMINANCE LIMITATION CURVES

Test:U:120.0V I:0.1255A P:14.77W PF:0.9806 Lamp Flux:1053.73x1 lm		
NAME:4904BN-2	TYPE:N/A	WEIGHT:N/A
SPEC.:	DIM.: N/A	SERIAL No.:N/A
N/A MFR.:	SUR.:N/A	Shielding Angle:N/A



LUMINANCE cd/(m2)		
G(DEG)	C0/180	C90/270
85	6138997	10514895
80	3273638	5339712
75	2328199	3615690
70	1896324	2754615
65	1682830	2242839
60	1587423	1906428
55	1544442	1679348
50	1504098	1520181
45	1452967	1412590

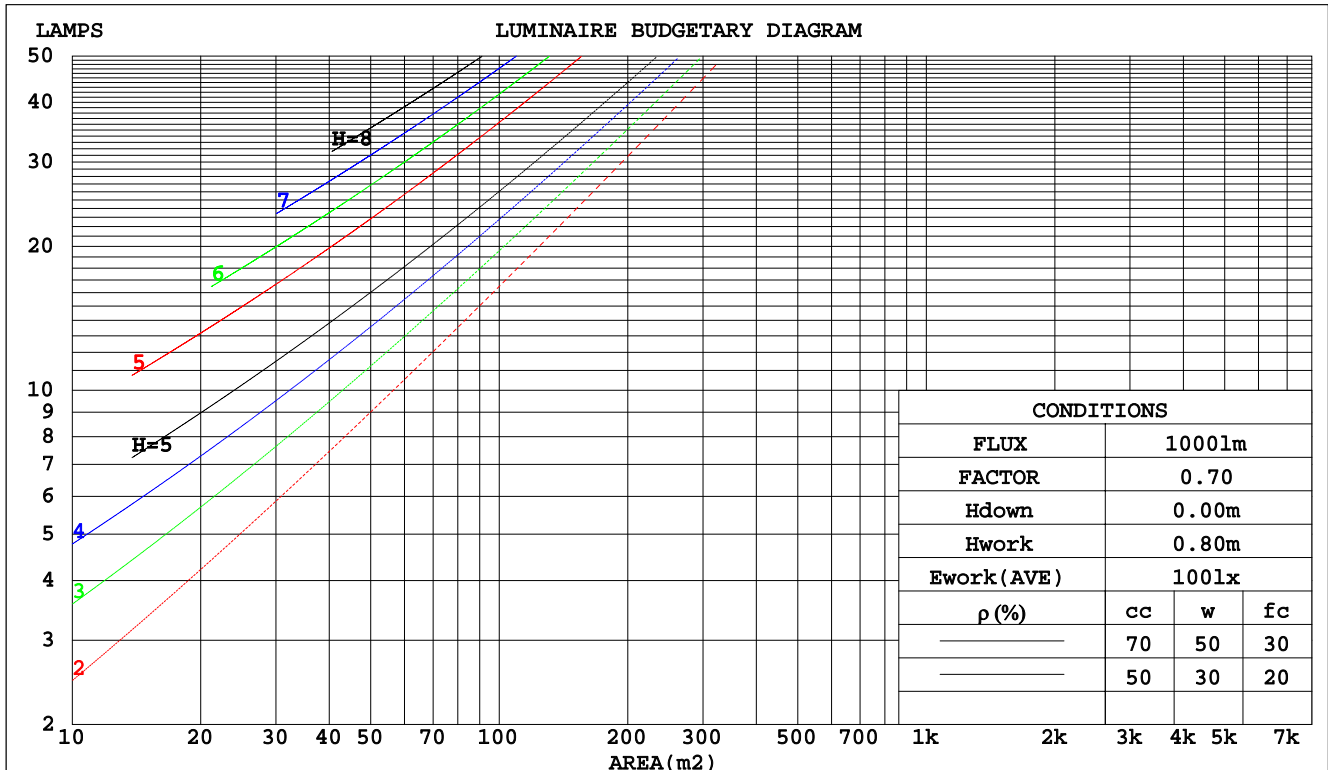
C Range: 0 - 360DEG
C Interval: 22.5DEG
Test Speed: 10.0deg/s
Temperature:25.2DEG
Operators:Monkey

γ Range: 0 - 180DEG
γ Interval: 1.0DEG
Test System:EVERFINE GO-R5000_V2 SYSTEM V2.0.351
Humidity:45%
Test Distance:2.447m [K=1.0000]
Remarks:

CU AND LUMINAIRE BUDGETARY ESTIMATE DIAGRAM

Test:U:120.0V I:0.1255A P:14.77W PF:0.9806 Lamp Flux:1053.73x1 lm		
NAME:4904BN-2	TYPE:N/A	WEIGHT:N/A
SPEC.:N/A	DIM.: N/A	SERIAL No.:N/A
MFR.:	SUR.:N/A	Shielding Angle:N/A

pcc	80%			70%			50%			30%			10%			0
pw	50%	30%	10%	50%	30%	10%	50%	30%	10%	50%	30%	10%	50%	30%	10%	0
pfc	20%			20%			20%			20%			20%			0
RCR	RCR:Room Cavity Ratio						Coefficients of Utilization(CU)									
0.0	1.10	1.10	1.10	1.03	1.03	1.03	.90	.90	.90	.79	.79	.79	.68	.68	.68	.63
1.0	.91	.85	.81	.85	.80	.76	.74	.70	.67	.64	.61	.58	.54	.52	.50	.45
2.0	.78	.70	.64	.73	.66	.60	.63	.58	.53	.54	.50	.46	.46	.43	.40	.36
3.0	.68	.59	.52	.63	.55	.49	.55	.49	.43	.47	.42	.38	.40	.36	.33	.29
4.0	.60	.50	.43	.56	.48	.41	.49	.42	.37	.42	.37	.32	.36	.31	.28	.24
5.0	.53	.44	.37	.50	.41	.35	.43	.37	.31	.37	.32	.28	.32	.28	.24	.21
6.0	.48	.39	.32	.45	.36	.31	.39	.32	.27	.34	.28	.24	.29	.25	.21	.18
7.0	.43	.34	.28	.40	.32	.27	.36	.29	.24	.31	.26	.21	.27	.22	.19	.16
8.0	.39	.31	.25	.37	.29	.24	.32	.26	.21	.28	.23	.19	.25	.20	.17	.15
9.0	.36	.28	.22	.34	.26	.21	.30	.24	.19	.26	.21	.17	.23	.18	.15	.13
10.0	.33	.25	.20	.31	.24	.19	.28	.22	.17	.24	.19	.16	.21	.17	.14	.12



C Range: 0 - 360DEG
C Interval: 22.5DEG
Test Speed: 10.0deg/s
Temperature:25.2DEG
Operators:Monkey

γ Range: 0 - 180DEG
 γ Interval: 1.0DEG
Test System:EVERFINE GO-R5000_V2 SYSTEM V2.0.351
Humidity:45%
Test Distance:2.447m [K=1.0000]
Remarks:

WEC AND CCEC

Test:U:120.0V I:0.1255A P:14.77W PF:0.9806 Lamp Flux:1053.73x1 lm								
NAME:4904BN-2				TYPE:N/A			WEIGHT:N/A	
SPEC.:				DIM.: N/A			SERIAL No.:N/A	
N/A MFR.:				SUR.:N/A			Shielding Angle:N/A	

pcc	80%			70%			50%			30%			10%			0
pw	50%	30%	10%	50%	30%	10%	50%	30%	10%	50%	30%	10%	50%	30%	10%	0
pfc	20%			20%			20%			20%			20%			0
RCR	RCR:Room Cavity Ratio						Wall Exitance Coefficients(WEC)									
0.0																
1.0	.388	.221	.070	.369	.211	.067	.335	.192	.061	.303	.175	.056	.273	.159	.051	
2.0	.327	.179	.055	.310	.171	.053	.279	.155	.048	.250	.140	.044	.223	.126	.040	
3.0	.287	.153	.046	.272	.146	.044	.243	.132	.040	.217	.119	.036	.192	.106	.033	
4.0	.257	.134	.039	.243	.127	.038	.217	.115	.034	.192	.103	.031	.170	.092	.028	
5.0	.233	.119	.034	.220	.113	.033	.196	.102	.030	.174	.092	.027	.153	.082	.025	
6.0	.213	.107	.031	.201	.102	.029	.179	.092	.027	.158	.082	.024	.139	.073	.022	
7.0	.196	.097	.027	.185	.092	.026	.165	.083	.024	.146	.075	.022	.128	.066	.020	
8.0	.182	.089	.025	.172	.085	.024	.153	.076	.022	.135	.068	.020	.118	.061	.018	
9.0	.169	.082	.023	.160	.078	.022	.143	.071	.020	.126	.063	.018	.110	.056	.016	
10.0	.159	.076	.021	.150	.072	.020	.134	.065	.018	.118	.059	.017	.104	.052	.015	

pcc	80%			70%			50%			30%			10%			0
pw	50%	30%	10%	50%	30%	10%	50%	30%	10%	50%	30%	10%	50%	30%	10%	0
pfc	20%			20%			20%			20%			20%			0
RCR	RCR:Room Cavity Ratio						Ceiling Cavity Exitance Coefficients(CCEC)									
0.0	.474	.474	.474	.405	.405	.405	.276	.276	.276	.159	.159	.159	.051	.051	.051	
1.0	.471	.441	.414	.403	.378	.356	.276	.260	.246	.159	.151	.143	.051	.048	.046	
2.0	.464	.419	.381	.398	.361	.329	.273	.250	.230	.157	.145	.135	.050	.047	.044	
3.0	.457	.403	.361	.392	.348	.313	.269	.242	.219	.155	.141	.129	.050	.046	.042	
4.0	.449	.391	.347	.385	.338	.302	.265	.236	.212	.153	.138	.126	.049	.045	.041	
5.0	.441	.382	.338	.379	.330	.294	.261	.231	.208	.151	.136	.123	.049	.044	.041	
6.0	.434	.374	.331	.373	.324	.288	.257	.227	.204	.149	.133	.121	.048	.044	.040	
7.0	.427	.368	.326	.367	.319	.284	.254	.224	.201	.147	.132	.120	.048	.043	.040	
8.0	.421	.363	.323	.362	.314	.281	.251	.221	.199	.146	.130	.119	.047	.043	.039	
9.0	.415	.358	.320	.357	.311	.279	.248	.218	.198	.144	.129	.118	.047	.042	.039	
10.0	.409	.354	.317	.353	.307	.277	.245	.216	.197	.143	.128	.117	.046	.042	.039	

C Range: 0 - 360DEG
C Interval: 22.5DEG
Test Speed: 10.0deg/s
Temperature:25.2DEG
Operators:Monkey

γ Range: 0 - 180DEG
γ Interval: 1.0DEG
Test System:EVERFINE GO-R5000_V2 SYSTEM V2.0.351
Humidity:45%
Test Distance:2.447m [K=1.0000]
Remarks:

UGR(Unified Glare Rating) Table

Test:U:120.0V I:0.1255A P:14.77W PF:0.9806 Lamp Flux:1053.73x1 lm											
NAME:4904BN-2					TYPE:N/A			WEIGHT:N/A			
SPEC.:N/A					DIM.: N/A			SERIAL No.:N/A			
MFR.:					SUR.:N/A			Shielding Angle:N/A			
ceiling/cavity	0.7	0.7	0.5	0.5	0.3	0.7	0.7	0.5	0.5	0.3	
walls	0.5	0.3	0.5	0.3	0.3	0.5	0.3	0.5	0.3	0.3	
working plane	0.2	0.2	0.2	0.2	0.2	0.2	0.2	0.2	0.2	0.2	
Room dimensions		Viewed crosswise					Viewed endwise				
x = 2H y = 2H		35.9	37.0	36.6	37.7	38.7	36.1	37.3	36.9	38.0	38.9
	3H	38.4	39.4	39.2	40.2	41.2	39.2	40.3	40.0	41.0	42.0
	4H	39.8	40.8	40.5	41.5	42.5	41.0	42.0	41.8	42.8	43.7
	6H	41.3	42.2	42.0	43.0	44.0	43.0	43.9	43.7	44.7	45.7
	8H	42.1	43.0	42.9	43.8	44.8	44.1	45.0	44.9	45.8	46.8
	12H	43.0	43.9	43.8	44.7	45.7	45.3	46.2	46.1	47.0	48.0
4H	2H	36.9	37.9	37.7	38.7	39.7	37.1	38.1	37.9	38.9	39.9
	3H	39.8	40.7	40.6	41.5	42.5	40.4	41.2	41.2	42.1	43.1
	4H	41.5	42.3	42.3	43.1	44.2	42.3	43.1	43.1	43.9	44.9
	6H	43.2	43.9	44.1	44.8	45.9	44.4	45.1	45.2	46.0	47.0
	8H	44.1	44.8	45.0	45.7	46.8	45.6	46.2	46.4	47.1	48.2
	12H	45.1	45.7	46.0	46.6	47.7	46.9	47.5	47.8	48.4	49.5
8H	4H	42.4	43.1	43.3	43.9	45.0	43.0	43.6	43.8	44.5	45.6
	6H	44.6	45.1	45.4	46.0	47.1	45.4	45.9	46.3	46.8	48.0
	8H	45.7	46.3	46.7	47.2	48.3	46.8	47.3	47.7	48.2	49.3
	12H	47.0	47.5	47.9	48.4	49.6	48.3	48.8	49.3	49.7	50.9
12H	4H	42.6	43.3	43.5	44.1	45.3	43.2	43.8	44.0	44.7	45.8
	6H	45.0	45.5	45.9	46.4	47.5	45.7	46.2	46.6	47.1	48.3
	8H	46.3	46.8	47.3	47.7	48.9	47.2	47.6	48.1	48.6	49.7
Variations with the observer position at spacings:											
S = 1.0H	+ 0.1 / - 0.1					+ 0.1 / - 0.1					
1.5H	+ 0.2 / - 0.3					+ 0.2 / - 0.3					
2.0H	+ 0.3 / - 0.5					+ 0.3 / - 0.4					

CIE Pub.117 Corrected 1054 lm Total Lamp Luminous Flux.(8log(F/F0) = 0.2)

C Range: 0 - 360DEG
C Interval: 22.5DEG
Test Speed: 10.0deg/s
Temperature:25.2DEG
Operators:Monkey

γ Range: 0 - 180DEG
 γ Interval: 1.0DEG
Test System:EVERFINE GO-R5000_V2 SYSTEM V2.0.351
Humidity:45%
Test Distance:2.447m [K=1.0000]
Remarks:

UTILIZATION FACTORS TABLE

Test:U:120.0V I:0.1255A P:14.77W PF:0.9806 Lamp Flux:1053.73x1 lm		
NAME: 4904BN-2	TYPE:N/A	WEIGHT:N/A
SPEC.:	DIM.: N/A	SERIAL No.:N/A
N/A MFR.:	SUR.:N/A	Shielding Angle:N/A

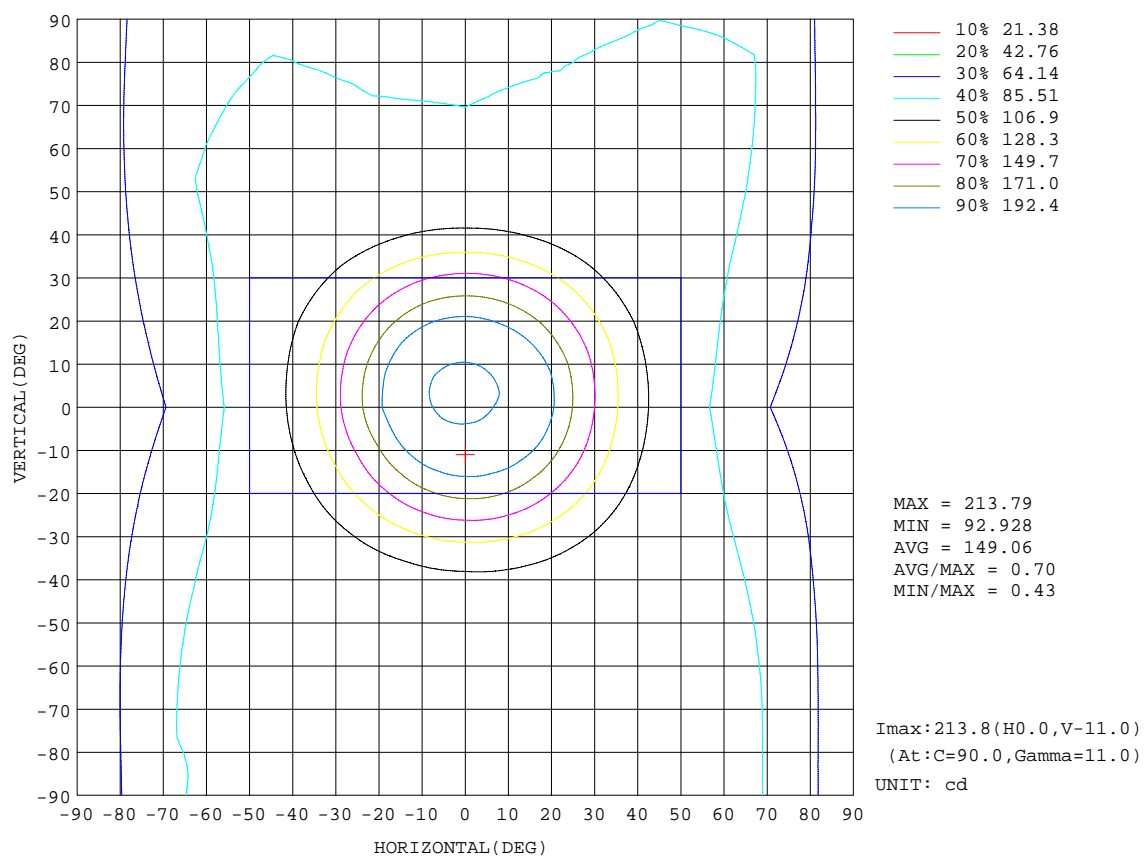
REFLECTANCE										
Ceiling	0.8	0.8	0.8	0.7	0.7	0.7	0.5	0.5	0.5	0
Walls	0.7	0.5	0.3	0.7	0.5	0.3	0.7	0.5	0.3	0
Working plane	0.2	0.2	0.2	0.2	0.2	0.2	0.2	0.2	0.2	0
ROOM INDEX	UTILIZATION FACTORS(PERCENT) $k(RI) \times RCR = 5$									
k = 0.60	43	31	24	42	30	24	39	29	23	16
0.80	52	39	31	50	38	30	46	35	29	20
1.00	59	46	37	56	44	36	51	43	34	24
1.25	65	52	44	62	50	42	56	46	39	28
1.50	70	58	49	67	55	47	60	50	44	30
2.00	78	66	57	73	63	55	65	57	50	35
2.50	82	71	63	77	68	60	69	61	55	38
3.00	86	76	68	81	72	65	71	64	59	40
4.00	91	82	75	85	78	71	75	69	64	44
5.00	94	86	80	88	82	76	77	72	68	47
ROOM INDEX	UF(total)									Direct
According to DIN EN 13032-2 2004			Suspended					SHRNOM = 1.25		

C Range: 0 - 360DEG
 C Interval: 22.5DEG
 Test Speed: 10.0deg/s
 Temperature:25.2DEG
 Operators:Monkey

γ Range: 0 - 180DEG
 γ Interval: 1.0DEG
 Test System:EVERFINE GO-R5000_V2 SYSTEM V2.0.351
 Humidity:45%
 Test Distance:2.447m [K=1.0000]
 Remarks:

ISOCANDELA DIAGRAM

Test:U:120.0V I:0.1255A P:14.77W PF:0.9806 Lamp Flux:1053.73x1 lm		
NAME:4904BN-2	TYPE:N/A	WEIGHT:N/A
SPEC.:	DIM.: N/A	SERIAL No.:N/A
N/A MFR.:	SUR.:N/A	Shielding Angle:N/A

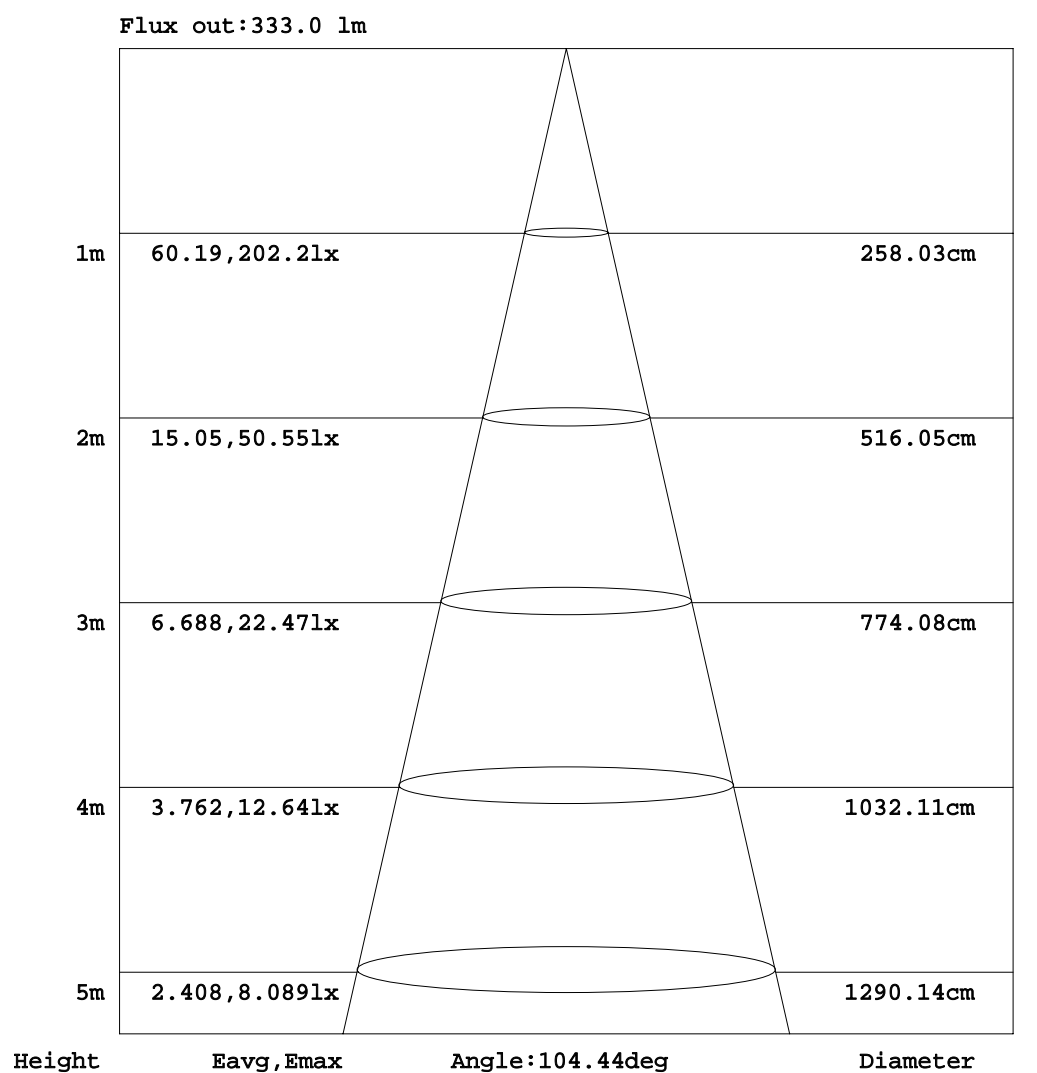


C Range: 0 - 360DEG
C Interval: 22.5DEG
Test Speed: 10.0deg/s
Temperature:25.2DEG
Operators:Monkey

γ Range: 0 - 180DEG
 γ Interval: 1.0DEG
Test System:EVERFINE GO-R5000_V2 SYSTEM V2.0.351
Humidity:45%
Test Distance:2.447m [K=1.0000]
Remarks:

AAI Figure

Test:U:120.0V I:0.1255A P:14.77W PF:0.9806 Lamp Flux:1053.73x1 lm		
NAME:4904BN-2	TYPE:N/A	WEIGHT:N/A
SPEC.:	DIM.: N/A	SERIAL No.:N/A
N/A MFR.:	SUR.:N/A	Shielding Angle:N/A



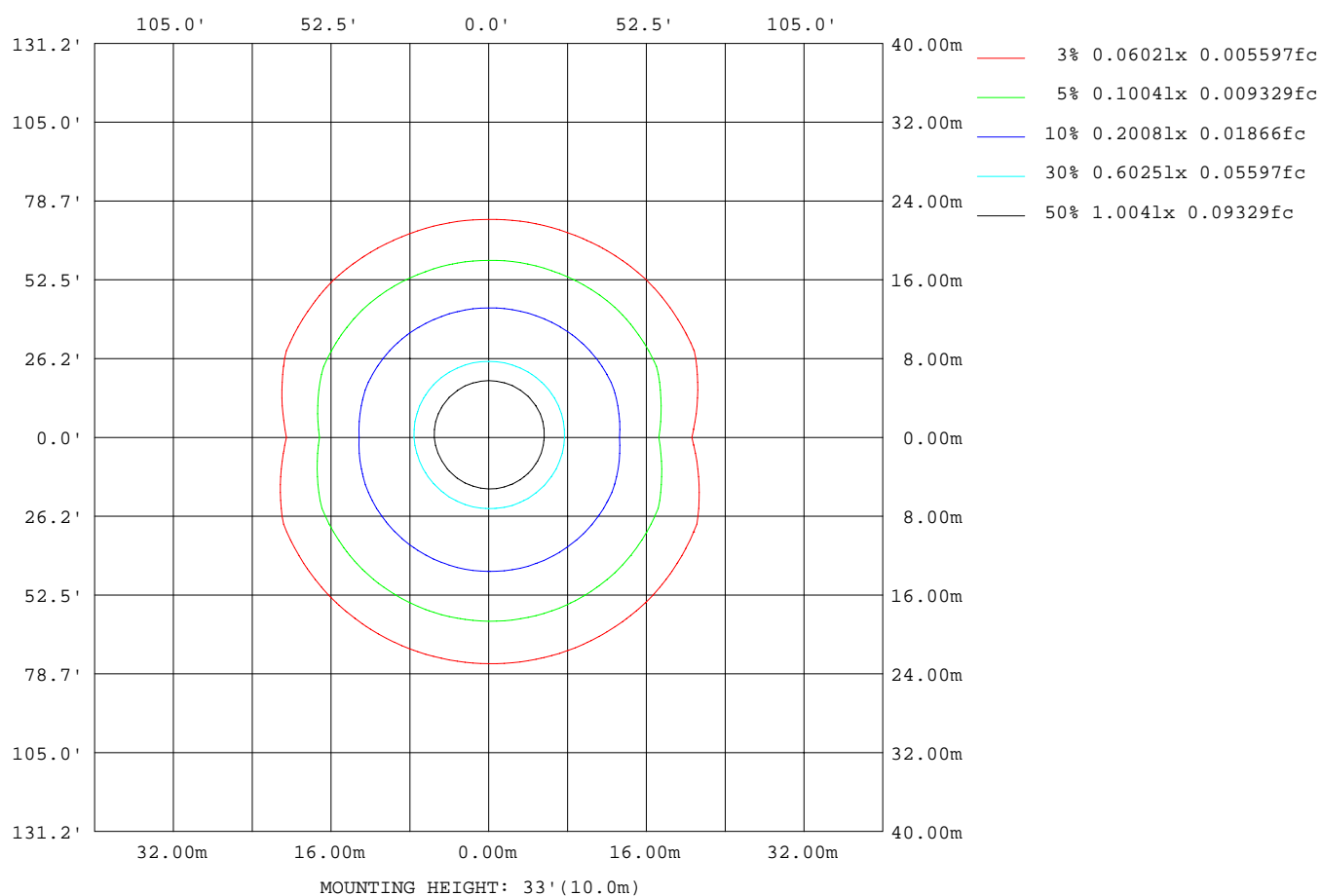
Note:The Curves indicate the illuminated area and the average illumination when the luminaire is at different distance.

C Range: 0 - 360DEG
 C Interval: 22.5DEG
 Test Speed: 10.0deg/s
 Temperature:25.2DEG
 Operators:Monkey

γ Range: 0 - 180DEG
 γ Interval: 1.0DEG
 Test System:EVERFINE GO-R5000_V2 SYSTEM V2.0.351
 Humidity:45%
 Test Distance:2.447m [K=1.0000]
 Remarks:

ISOLUX DIAGRAM

Test:U:120.0V I:0.1255A P:14.77W PF:0.9806 Lamp Flux:1053.73x1 lm		
NAME:4904BN-2	TYPE:N/A	WEIGHT:N/A
SPEC.:	DIM.: N/A	SERIAL No.:N/A
N/A MFR.:	SUR.:N/A	Shielding Angle:N/A



C Range: 0 - 360DEG
C Interval: 22.5DEG
Test Speed: 10.0deg/s
Temperature:25.2DEG
Operators:Monkey

γ Range: 0 - 180DEG
 γ Interval: 1.0DEG
Test System:EVERFINE GO-R5000_V2 SYSTEM V2.0.351
Humidity:45%
Test Distance:2.447m [K=1.0000]
Remarks:

LED Avg.L Report

Test:U:120.0V I:0.1255A P:14.77W PF:0.9806 Lamp Flux:1053.73x1 lm		
NAME: 4904BN-2	TYPE:N/A	WEIGHT:N/A
SPEC.:	DIM.: N/A	SERIAL No.:N/A
N/A MFR.:	SUR.:N/A	Shielding Angle:N/A

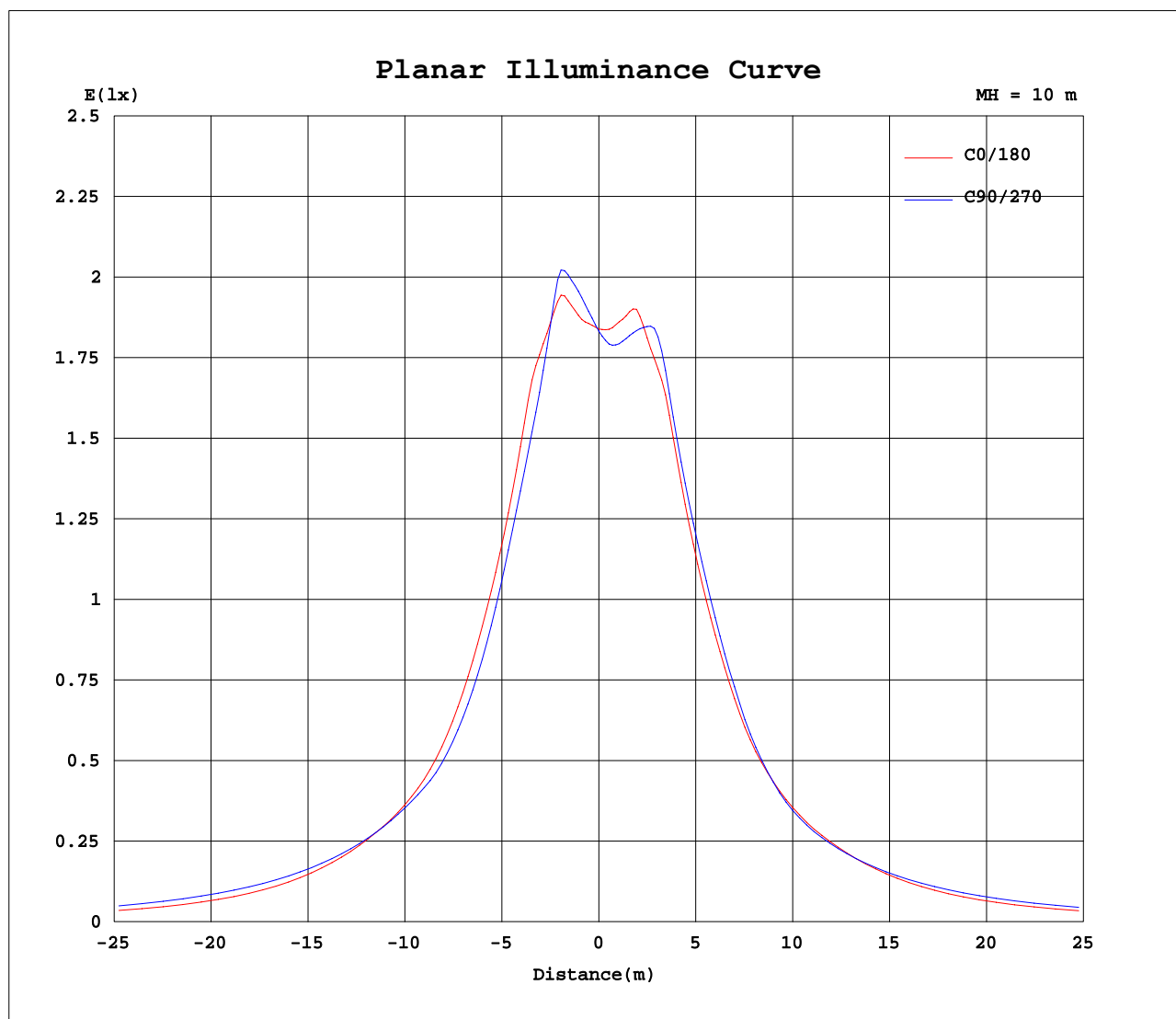
AvgL	cd/m2
L_0~180 (65) av	1664711
L_0~180 (75) av	2279337
L_0~180 (85) av	5956162
L_90~270 (65) av	2142332
L_90~270 (75) av	3445879
L_90~270 (85) av	10013733
L_45 (65) av	2193283
L_45 (75) av	3525805
L_45 (85) av	10221861

Standard: GB/T 29293-2012

C Range: 0 - 360DEG
C Interval: 22.5DEG
Test Speed: 10.0deg/s
Temperature:25.2DEG
Operators:Monkey

γ Range: 0 - 180DEG
γ Interval: 1.0DEG
Test System:EVERFINE GO-R5000_V2 SYSTEM V2.0.351
Humidity:45%
Test Distance:2.447m [K=1.0000]
Remarks:

Planar Illuminance Curve



C Range: 0 - 360DEG
C Interval: 22.5DEG
Test Speed: 10.0deg/s
Temperature: 25.2DEG
Operators: Monkey

γ Range: 0 - 180DEG
 γ Interval: 1.0DEG
Test System: EVERFINE GO-R5000_V2 SYSTEM V2.0.351
Humidity: 45%
Test Distance: 2.447m [K=1.0000]
Remarks:

LUMINOUS DISTRIBUTION INTENSITY DATA

Test:U:120.0V I:0.1255A P:14.77W PF:0.9806 Lamp Flux:1053.73x1 lm																		
NAME: 4904BN-2									TYPE:N/A					WEIGHT:N/A				
SPEC.:N/A									DIM.: N/A					SERIAL No.:N/A				
MFR.:									SUR.:N/A					Shielding Angle:N/A				

Table--1

UNIT: cd

C (DEG) γ (DEG)	0	22.5	45	67.5	90	112.5	135	157.5	180	202.5	225	247.5	270	292.5	315	337.5			
0	183	183	183	183	183	183	183	183	183	183	183	183	183	183	183	183			
5	188	191	194	195	196	195	193	190	187	184	182	181	181	182	183	185			
10	203	206	208	210	212	211	207	203	198	194	191	191	191	193	195	198			
15	202	202	203	200	198	198	200	199	197	196	199	203	205	207	207	204			
20	195	188	181	178	176	175	177	182	189	192	195	197	198	197	198	198			
25	170	165	161	157	155	154	156	159	165	169	172	174	174	175	175	175			
30	149	145	140	136	133	133	135	139	145	149	152	153	154	155	155	154			
35	129	126	121	118	116	116	117	120	125	130	133	133	133	133	134	134			
40	112	110	107	105	103	104	105	107	110	113	114	113	112	113	115	116			
45	102	102	101	101	99.9	99.3	98.9	98.7	100.0	102	102	99.3	97.7	98.6	102	104			
50	96.4	98.9	99.2	98.7	97.7	97.3	96.7	95.7	93.6	95.7	94.4	92.3	91.9	93.8	96.9	99.2			
55	88.3	97.0	97.7	97.3	96.4	95.9	95.1	93.9	86.6	93.3	92.0	89.7	89.1	91.1	94.5	96.8			
60	79.1	95.3	96.7	96.4	95.4	95.0	94.2	92.6	78.0	90.5	90.4	87.9	87.4	89.4	92.7	94.2			
65	70.9	93.8	96.3	96.0	94.8	94.2	93.5	91.4	69.8	88.1	89.2	86.8	86.3	88.1	91.7	92.1			
70	64.6	92.7	95.9	95.5	94.2	93.7	92.9	90.2	63.2	86.4	88.4	86.0	85.5	87.2	90.9	90.5			
75	60.1	91.5	95.4	95.0	93.6	93.2	92.2	89.0	57.9	85.0	87.6	85.2	84.8	86.4	89.8	89.2			
80	56.7	90.1	94.7	94.2	92.8	92.2	91.3	87.5	54.0	83.7	86.5	84.2	83.9	85.6	88.7	87.8			
85	53.3	88.4	93.8	93.2	91.7	91.0	90.2	85.7	50.5	82.0	85.0	83.0	82.9	84.4	87.4	86.4			
90	50.3	87.7	94.0	93.4	92.1	91.3	90.6	85.1	46.3	80.5	83.3	81.6	81.8	83.0	85.7	84.9			
95	51.0	88.2	94.3	93.4	92.1	91.4	90.7	85.4	46.6	79.7	81.9	81.0	81.4	82.7	84.4	83.8			
100	45.8	88.9	93.9	92.6	91.2	90.7	90.3	85.7	43.3	77.7	79.1	79.9	80.9	81.8	81.7	81.2			
105	43.2	88.9	92.5	91.2	89.6	89.1	88.8	85.3	39.3	73.8	74.9	77.8	79.3	79.8	77.8	76.9			
110	47.6	87.3	89.8	88.7	87.3	86.6	86.1	83.5	43.6	68.4	69.3	74.8	77.0	76.8	72.3	71.4			
115	50.0	84.7	85.9	85.3	84.1	83.3	82.4	80.6	45.8	62.7	63.1	70.9	73.8	73.1	66.0	65.6			
120	50.7	81.5	82.1	81.0	80.0	79.2	78.5	77.7	46.0	56.4	56.6	66.4	69.9	68.6	59.6	59.1			
125	50.0	77.7	77.5	76.5	75.3	74.6	74.1	74.0	45.4	49.9	50.3	61.4	65.2	63.6	53.4	52.4			
130	47.7	72.1	72.5	71.6	70.5	69.7	69.1	68.6	43.9	43.0	44.4	56.1	60.3	58.1	47.4	45.3			
135	44.0	65.1	66.9	66.2	65.1	64.5	63.6	61.8	41.2	37.4	38.7	50.8	54.9	52.8	41.8	39.2			
140	40.1	57.3	60.9	60.3	59.1	58.7	57.8	53.9	38.0	32.4	33.3	45.3	49.6	47.7	37.1	34.0			
145	36.4	49.3	54.2	53.8	52.4	52.3	51.1	46.0	34.5	28.6	29.2	39.5	44.0	42.7	33.7	30.1			
150	33.0	41.8	47.0	47.1	45.6	45.6	44.2	38.9	31.0	27.3	27.3	33.5	38.6	37.6	30.7	27.6			
155	29.7	34.4	39.2	39.9	38.7	38.7	36.8	31.9	27.5	26.4	25.4	28.4	33.2	32.9	28.3	26.3			
160	26.5	27.8	30.9	32.0	31.5	30.9	29.0	25.5	24.8	23.2	23.3	24.1	28.1	28.9	26.2	24.7			
165	22.8	21.9	24.0	24.7	24.0	23.4	22.3	20.3	21.9	22.3	18.4	22.0	24.6	25.2	23.4	23.0			
170	14.7	14.6	17.3	18.1	17.4	16.7	15.3	13.2	15.4	15.4	16.5	18.6	20.2	21.6	20.8	18.0			
175	7.71	7.29	7.64	11.2	10.6	10.4	6.92	7.18	7.48	7.51	8.28	8.82	11.4	13.2	13.0	9.06			
180	8.66	6.26	4.51	1.52	2.74	0.00	5.35	7.08	7.17	7.18	6.28	3.97	1.09	0.86	0.33	4.02			

C Range: 0 - 360DEG
C Interval: 22.5DEG
Test Speed: 10.0deg/s
Temperature:25.2DEG
Operators:Monkey

γ Range: 0 - 180DEG
γ Interval: 1.0DEG
Test System:EVERFINE GO-R5000_V2 SYSTEM V2.0.351
Humidity:45%
Test Distance:2.447m [K=1.0000]
Remarks: