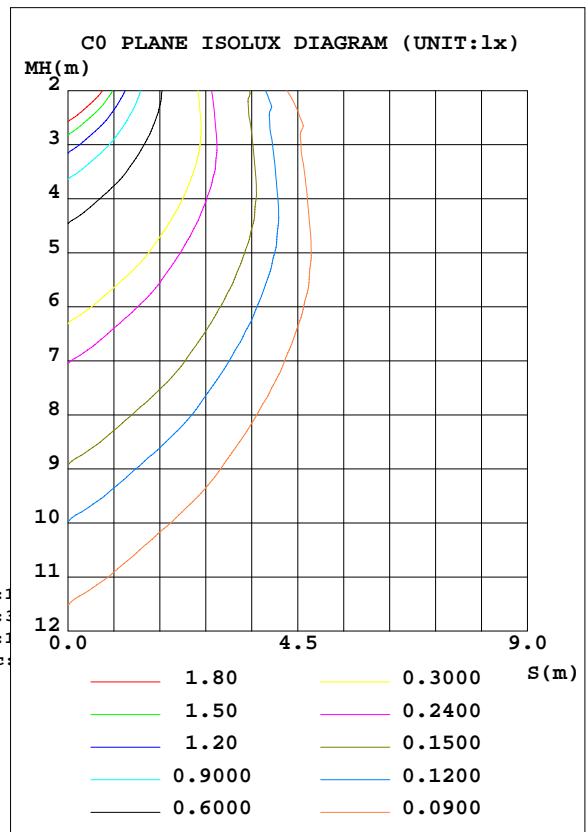
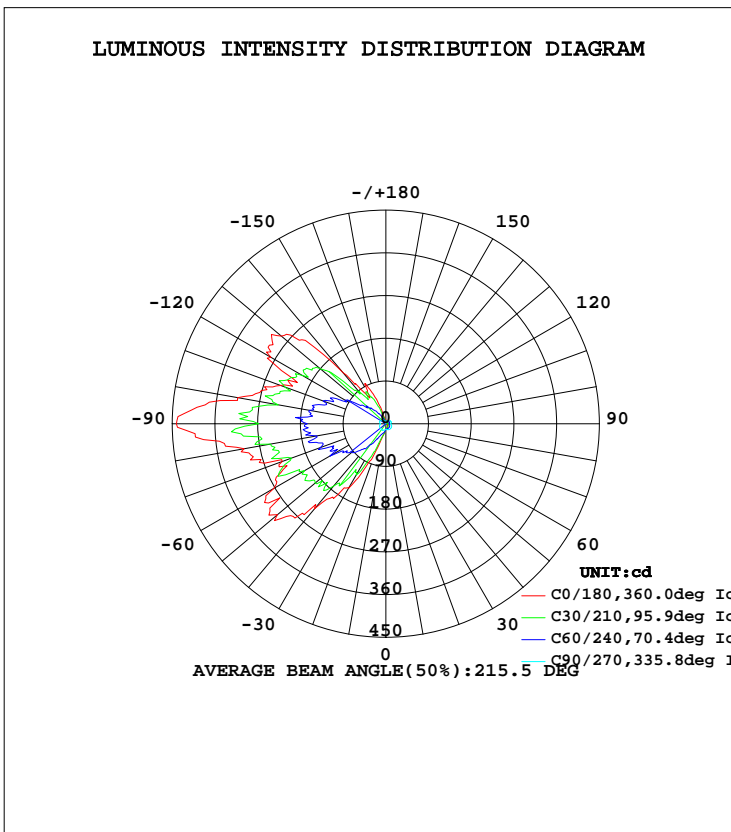




LUMINAIRE PHOTOMETRIC TEST REPORT

Test:U:119.9V I:0.1271A P:14.96W PF:0.9820 Lamp Flux:876.182x1 lm		
NAME:	TYPE:	WEIGHT:
SPEC.:	DIM.:	SERIAL No.:
MFR.:	SUR.:	PROTECTION ANGLE:

DATA OF LAMP		PHOTOMETRIC DATA Eff: 58.57 lm/W			
MODEL	4405BK	Imax(cd)	441.6	S/MH(C0/180)	6.38
NOMINAL POWER(W)	15	LOR(%)	100.0	S/MH(C90/270)	1.91
RATED VOLTAGE(V)	120	TOTAL FLUX(lm)	876.18	η UP, DN(C0-180)	18.6,21.8
NOMINAL FLUX(lm)	876.182	CIE CLASS	DIFFUSE	η UP, DN(C180-360)	28.0,31.5
LAMPS INSIDE	1	η up(%)	46.7	CIBSE SHR NOM	0.00
TEST VOLTAGE(V)		η down(%)	53.3	CIBSE SHR MAX	1.00



C Range: 0 - 360DEG
 C Interval: 15.0DEG
 Test Speed: HIGH
 Temperature:25.3DEG
 Operators:
 Test Date:2020-05-22

γ Range: 0 - 180DEG
 γ Interval: 1.0DEG
 Test System:EVERFINE GO-2000B_V1 SYSTEM V2.0.291
 Humidity:65.0%
 Test Distance:7.500m [K=1.0000]
 Remarks:



ZONAL FLUX DIAGRAM

ZONAL FLUX DIAGRAM:

γ	C0	C45	C90	C135	C180	C225	C270	C315	γ	Φ zone	Φ total	lum, lamp
10	9.746	10.21	12.20	18.58	20.64	19.78	13.32	11.09	0- 10	1.284	1.284	0.15,0.15
20	8.286	9.817	13.50	28.61	60.25	32.51	14.71	10.53	10- 20	5.054	6.338	0.72,0.72
30	7.187	9.347	14.16	65.05	156.3	75.19	15.47	9.925	20- 30	15.71	22.05	2.52,2.52
40	6.317	8.919	14.31	102.0	234.4	131.0	15.30	9.321	30- 40	34.17	56.23	6.42,6.42
50	5.235	8.518	14.28	154.9	298.4	162.7	15.34	8.620	40- 50	56.55	112.8	12.9,12.9
60	5.101	7.802	13.98	167.7	273.2	191.2	15.11	7.511	50- 60	72.21	185.0	21.1,21.1
70	4.045	6.962	13.16	201.3	232.6	221.2	14.28	6.390	60- 70	78.28	263.3	30,30
80	3.562	6.069	11.79	250.6	303.3	271.4	12.80	5.527	70- 80	91.48	354.7	40.5,40.5
90	3.624	5.916	9.871	244.7	441.6	305.2	11.42	5.396	80- 90	112.5	467.3	53.3,53.3
100	3.617	6.008	11.23	241.7	317.0	258.6	13.17	5.461	90-100	113.3	580.6	66.3,66.3
110	3.474	6.323	12.74	194.8	236.4	229.7	14.40	6.059	100-110	89.95	670.6	76.5,76.5
120	3.493	7.051	11.49	164.1	279.8	198.4	12.32	6.638	110-120	74.62	745.2	85,85
130	3.376	5.777	10.20	119.0	287.6	88.16	10.93	6.557	120-130	64.41	809.6	92.4,92.4
140	3.279	5.757	8.237	33.46	139.9	86.09	11.37	5.576	130-140	39.27	848.9	96.9,96.9
150	3.753	6.035	7.647	26.40	77.66	48.00	7.397	5.165	140-150	16.51	865.4	98.8,98.8
160	2.962	2.908	3.971	12.09	45.68	12.40	4.379	2.881	150-160	8.569	873.9	99.7,99.7
170	2.966	3.190	3.280	4.578	7.712	4.585	2.334	2.449	160-170	1.831	875.8	100,100
180	6.913	6.120	5.426	5.993	6.963	6.081	5.465	6.031	170-180	0.4129	876.2	100,100
DEG	LUMINOUS INTENSITY:cd									UNIT:lm		

C Range: 0 - 360DEG
 C Interval: 15.0DEG
 Test Speed: HIGH
 Temperature:25.3DEG
 Operators:
 Test Date:2020-05-22

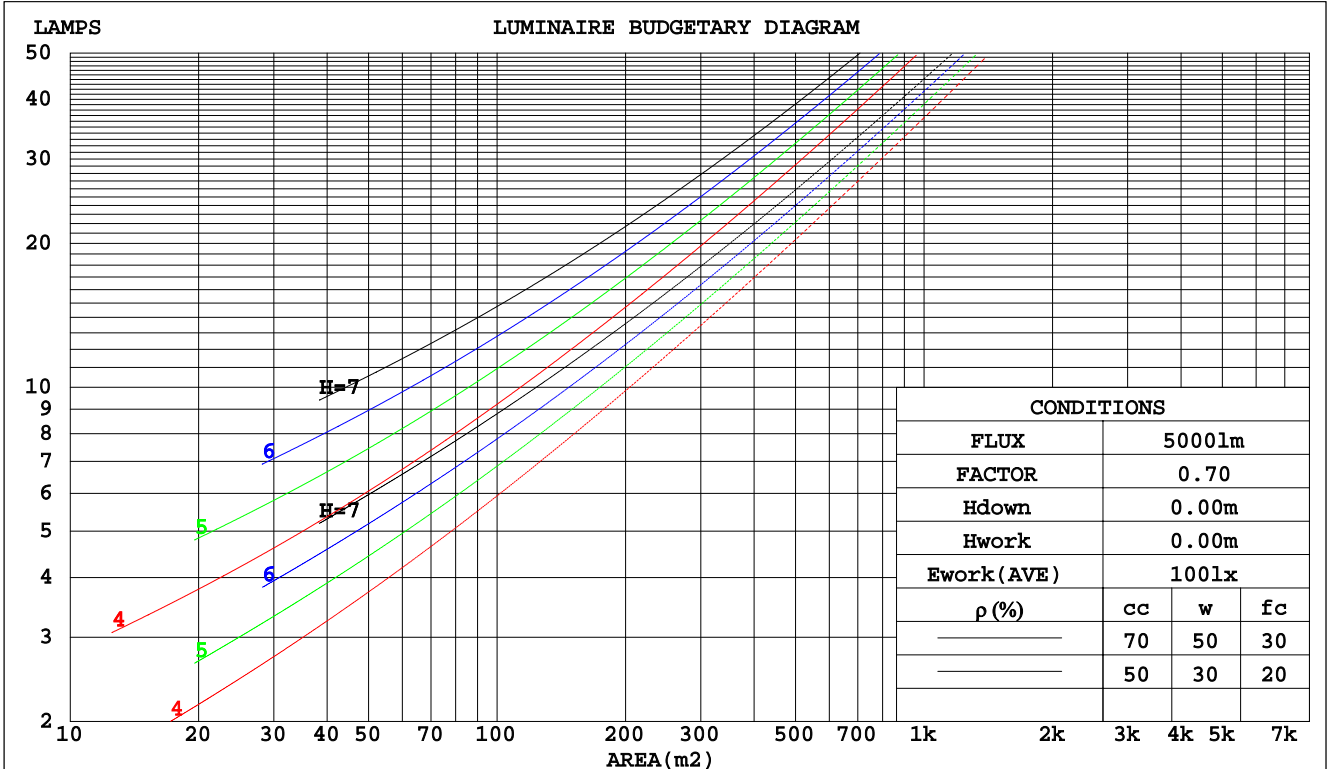
γ Range: 0 - 180DEG
 γ Interval: 1.0DEG
 Test System:EVERFINE GO-2000B_V1 SYSTEM V2.0.291
 Humidity:65.0%
 Test Distance:7.500m [K=1.0000]
 Remarks:



CU AND LUMINAIRE BUDGETARY ESTIMATE DIAGRAM

Test:U:119.9V I:0.1271A P:14.96W PF:0.9820 Lamp Flux:876.182x1 lm		
NAME:	TYPE:	WEIGHT:
SPEC.:	DIM.:	SERIAL No.:
MFR.:	SUR.:	PROTECTION ANGLE:

pcc	80%			70%			50%			30%			10%			0
	50%	30%	10%	50%	30%	10%	50%	30%	10%	50%	30%	10%	50%	30%	10%	0
pw																0
pfc	20%			20%			20%			20%			20%			0
RCR	RCR:Room Cavity Ratio						Coefficients of Utilization(CU)									
0.0	1.08	1.08	1.08	.00	.00	.00	.85	.85	.85	.72	.72	.72	.59	.59	.59	.53
1.0	.85	.79	.73	.78	.73	.68	.65	.61	.57	.53	.50	.47	.42	.40	.37	.32
2.0	.71	.62	.55	.65	.57	.51	.54	.48	.43	.44	.39	.35	.34	.30	.27	.22
3.0	.61	.51	.43	.55	.47	.40	.46	.39	.33	.37	.31	.27	.28	.24	.21	.16
4.0	.52	.43	.35	.48	.39	.32	.39	.32	.27	.32	.26	.21	.24	.20	.16	.12
5.0	.46	.36	.29	.42	.33	.26	.35	.27	.22	.28	.22	.17	.21	.17	.13	.10
6.0	.41	.31	.24	.37	.28	.22	.31	.24	.18	.24	.19	.15	.19	.14	.11	.08
7.0	.36	.27	.20	.33	.25	.19	.27	.20	.15	.22	.16	.12	.17	.12	.09	.06
8.0	.33	.24	.18	.30	.22	.16	.25	.18	.13	.20	.14	.10	.15	.11	.08	.05
9.0	.29	.21	.15	.27	.19	.14	.22	.16	.11	.18	.13	.09	.14	.10	.07	.04
10.0	.27	.19	.13	.25	.17	.12	.20	.14	.10	.16	.11	.08	.13	.09	.06	.04



C Range: 0 - 360DEG
 C Interval: 15.0DEG
 Test Speed: HIGH
 Temperature: 25.3DEG
 Operators:
 Test Date: 2020-05-22

γ Range: 0 - 180DEG
 γ Interval: 1.0DEG
 Test System: EVERFINE GO-2000B_V1 SYSTEM V2.0.291
 Humidity: 65.0%
 Test Distance: 7.500m [K=1.0000]
 Remarks:



WEC AND CCEC

Test:U:119.9V I:0.1271A P:14.96W PF:0.9820 Lamp Flux:876.182x1 lm															
NAME:				TYPE:				WEIGHT:							
SPEC.:				DIM.:				SERIAL No.:							
MFR.:				SUR.:				PROTECTION ANGLE:							

ρcc	80%			70%			50%			30%			10%			0
ρw	50%	30%	10%	50%	30%	10%	50%	30%	10%	50%	30%	10%	50%	30%	10%	0
ρfc	20%			20%			20%			20%			20%			0
RCR	RCR:Room Cavity Ratio						Wall Exitance Coefficients(WEC)									
0.0																
1.0	.453	.258	.082	.432	.246	.078	.391	.225	.072	.354	.204	.066	.320	.186	.060	
2.0	.369	.202	.062	.349	.192	.059	.312	.174	.054	.278	.156	.049	.247	.140	.044	
3.0	.317	.169	.051	.299	.160	.048	.266	.144	.044	.234	.128	.039	.205	.114	.035	
4.0	.280	.146	.043	.264	.138	.041	.233	.123	.037	.204	.110	.033	.177	.096	.029	
5.0	.251	.128	.037	.236	.121	.035	.208	.108	.032	.181	.096	.028	.156	.084	.025	
6.0	.228	.114	.033	.214	.108	.031	.188	.096	.028	.163	.085	.025	.140	.074	.022	
7.0	.208	.103	.029	.196	.098	.028	.171	.087	.025	.149	.076	.022	.127	.066	.019	
8.0	.192	.094	.026	.180	.089	.025	.158	.079	.023	.137	.069	.020	.117	.060	.017	
9.0	.178	.086	.024	.167	.081	.023	.146	.072	.020	.127	.063	.018	.108	.055	.016	
10.0	.166	.080	.022	.156	.075	.021	.136	.067	.019	.118	.058	.017	.100	.050	.014	

ρcc	80%			70%			50%			30%			10%			0
ρw	50%	30%	10%	50%	30%	10%	50%	30%	10%	50%	30%	10%	50%	30%	10%	0
ρfc	20%			20%			20%			20%			20%			0
RCR	RCR:Room Cavity Ratio						Ceiling Cavity Exitance Coefficients(CCEC)									
0.0	.546	.546	.546	.467	.467	.467	.319	.319	.319	.183	.183	.183	.059	.059	.059	
1.0	.549	.513	.482	.470	.441	.414	.321	.303	.287	.185	.175	.167	.059	.056	.054	
2.0	.543	.492	.450	.465	.424	.389	.319	.293	.271	.184	.171	.159	.059	.055	.052	
3.0	.536	.477	.430	.460	.412	.373	.316	.286	.262	.182	.167	.154	.059	.054	.051	
4.0	.529	.466	.418	.454	.403	.363	.312	.281	.256	.181	.164	.151	.058	.054	.050	
5.0	.521	.457	.410	.448	.396	.357	.308	.276	.252	.179	.162	.149	.058	.053	.049	
6.0	.514	.450	.404	.442	.390	.352	.305	.273	.249	.177	.160	.148	.057	.052	.049	
7.0	.507	.444	.400	.436	.385	.348	.301	.270	.247	.175	.159	.147	.057	.052	.049	
8.0	.500	.439	.396	.431	.380	.346	.298	.267	.245	.173	.158	.146	.056	.052	.048	
9.0	.494	.434	.394	.425	.377	.344	.295	.265	.244	.172	.156	.145	.056	.051	.048	
10.0	.488	.430	.392	.421	.374	.342	.292	.263	.243	.170	.155	.145	.055	.051	.048	

C Range: 0 - 360DEG
 C Interval: 15.0DEG
 Test Speed: HIGH
 Temperature:25.3DEG
 Operators:
 Test Date:2020-05-22

γ Range: 0 - 180DEG
 γ Interval: 1.0DEG
 Test System:EVERFINE GO-2000B_V1 SYSTEM V2.0.291
 Humidity:65.0%
 Test Distance:7.500m [K=1.0000]
 Remarks:



UGR(Unified Glare Rating) Table

Test:U:119.9V I:0.1271A P:14.96W PF:0.9820 Lamp Flux:876.182x1 lm										
NAME:					TYPE:			WEIGHT:		
SPEC.:					DIM.:			SERIAL No.:		
MFR.:					SUR.:			PROTECTION ANGLE:		
ceiling/cavity	0.7	0.7	0.5	0.5	0.3	0.7	0.7	0.5	0.5	0.3
walls	0.5	0.3	0.5	0.3	0.3	0.5	0.3	0.5	0.3	0.3
working plane	0.2	0.2	0.2	0.2	0.2	0.2	0.2	0.2	0.2	0.2
Room dimensions	Viewed crosswise					Viewed endwise				
x = 2H y = 2H	-7.2	-6.0	-6.4	-5.2	-4.1	-2.3	-1.1	-1.5	-0.3	0.8
3H	-5.1	-4.0	-4.2	-3.1	-2.0	0.9	1.9	1.7	2.8	4.0
4H	-4.0	-3.0	-3.1	-2.1	-0.9	2.6	3.6	3.5	4.6	5.7
6H	-2.6	-1.6	-1.7	-0.7	0.5	4.6	5.5	5.4	6.4	7.6
8H	-1.6	-0.7	-0.7	0.2	1.4	5.6	6.5	6.5	7.4	8.6
12H	-0.5	0.4	0.4	1.3	2.5	6.8	7.6	7.7	8.6	9.8
4H 2H	-5.4	-4.4	-4.6	-3.5	-2.4	-2.1	-1.1	-1.2	-0.2	1.0
3H	-3.3	-2.4	-2.4	-1.4	-0.2	1.3	2.2	2.2	3.1	4.3
4H	-2.1	-1.3	-1.2	-0.4	0.9	3.2	4.0	4.1	5.0	6.2
6H	-0.7	0.0	0.2	1.0	2.2	5.3	6.1	6.3	7.0	8.3
8H	0.2	0.9	1.1	1.8	3.1	6.5	7.2	7.5	8.2	9.4
12H	1.3	2.0	2.3	2.9	4.2	7.9	8.5	8.8	9.5	10.7
8H 4H	-0.8	-0.1	0.2	0.9	2.1	3.4	4.1	4.3	5.0	6.3
6H	0.9	1.5	1.9	2.5	3.8	5.7	6.3	6.7	7.3	8.6
8H	2.0	2.5	2.9	3.5	4.8	7.1	7.6	8.1	8.6	9.9
12H	3.2	3.6	4.2	4.7	6.0	8.7	9.1	9.7	10.1	11.5
12H 4H	-0.3	0.3	0.6	1.3	2.6	3.4	4.0	4.3	5.0	6.3
6H	1.6	2.1	2.5	3.1	4.4	5.8	6.3	6.8	7.3	8.6
8H	2.8	3.2	3.7	4.2	5.6	7.2	7.7	8.2	8.7	10.0
Variations with the observer position at spacings:										
S = 1.0H	+ 0.1 / - 0.1					+ 0.1 / - 0.1				
1.5H	+ 0.2 / - 0.2					+ 0.2 / - 0.2				
2.0H	+ 0.3 / - 0.3					+ 0.4 / - 0.4				

CIE Pub.117 Corrected 876.2 lm Total Lamp Luminous Flux. (8log(F/F0) = -0.5)

C Range: 0 - 360DEG
 C Interval: 15.0DEG
 Test Speed: HIGH
 Temperature:25.3DEG
 Operators:
 Test Date:2020-05-22

γ Range: 0 - 180DEG
 γ Interval: 1.0DEG
 Test System:EVERFINE GO-2000B_V1 SYSTEM V2.0.291
 Humidity:65.0%
 Test Distance:7.500m [K=1.0000]
 Remarks:



UTILIZATION FACTORS TABLE

Test:U:119.9V I:0.1271A P:14.96W PF:0.9820 Lamp Flux:876.182x1 lm		
NAME:	TYPE:	WEIGHT:
SPEC.:	DIM.:	SERIAL No.:
MFR.:	SUR.:	PROTECTION ANGLE:

REFLECTANCE										
Ceiling	0.8	0.8	0.8	0.7	0.7	0.7	0.5	0.5	0.5	0
Walls	0.7	0.5	0.3	0.7	0.5	0.3	0.7	0.5	0.3	0
Working plane	0.2	0.2	0.2	0.2	0.2	0.2	0.2	0.2	0.2	0
ROOM INDEX	UTILIZATION FACTORS(PERCENT) $k(RI) \times RCR = 5$									
k = 0.60	34	20	13	32	19	12	29	18	11	4
0.80	42	27	19	40	26	18	35	24	16	7
1.00	49	34	25	46	32	23	40	31	21	10
1.25	56	41	31	52	39	29	46	34	26	13
1.50	62	47	36	57	44	34	49	38	30	16
2.00	69	56	45	64	52	42	55	45	37	20
2.50	75	62	51	69	58	48	59	50	42	23
3.00	79	67	57	73	62	53	62	54	47	26
4.00	84	74	65	78	69	61	66	59	53	30
5.00	88	79	71	81	73	66	69	63	57	32
ROOM INDEX	UF(total)									Direct
According to DIN EN 13032-2 2004			Suspended				SHRNOM = 1.25			

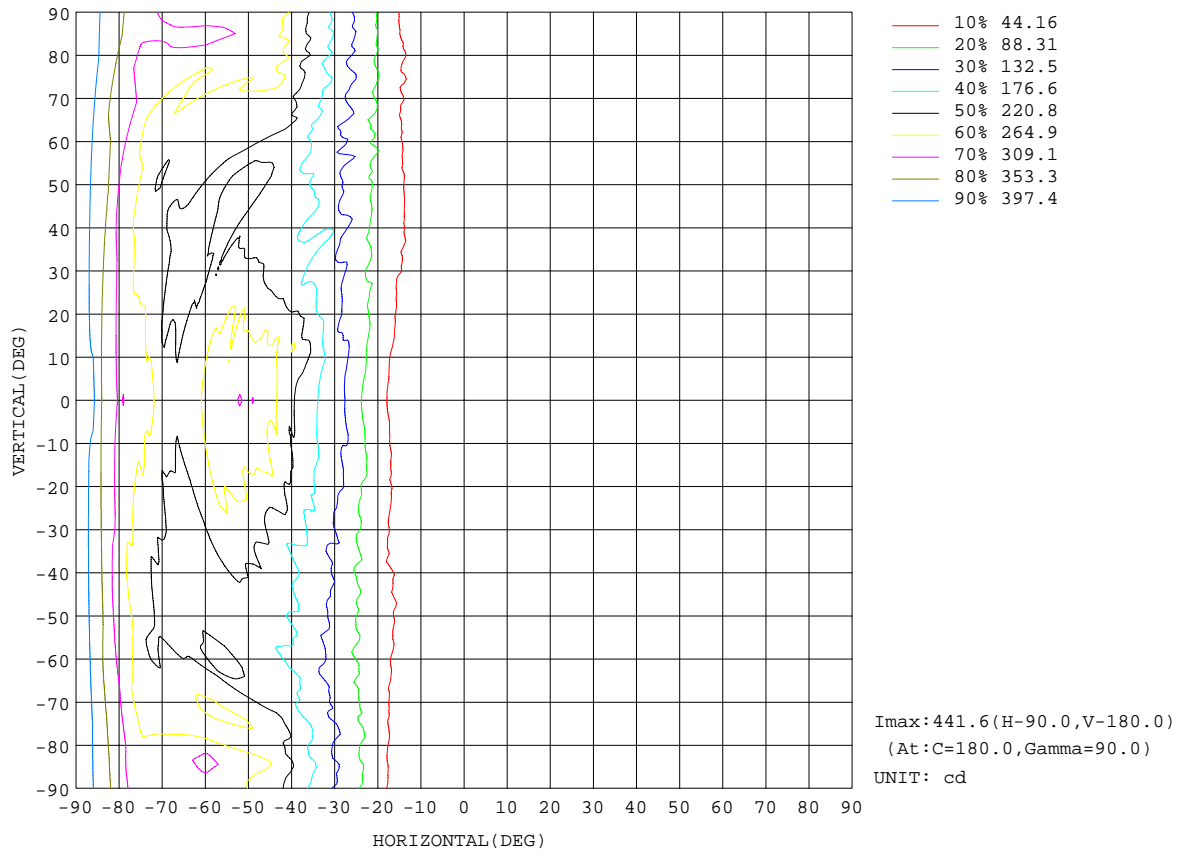
C Range: 0 - 360DEG
 C Interval: 15.0DEG
 Test Speed: HIGH
 Temperature:25.3DEG
 Operators:
 Test Date:2020-05-22

γ Range: 0 - 180DEG
 γ Interval: 1.0DEG
 Test System:EVERFINE GO-2000B_V1 SYSTEM V2.0.291
 Humidity:65.0%
 Test Distance:7.500m [K=1.0000]
 Remarks:



ISOCANDELA DIAGRAM

Test:U:119.9V I:0.1271A P:14.96W PF:0.9820 Lamp Flux:876.182x1 lm		
NAME:	TYPE:	WEIGHT:
SPEC.:	DIM.:	SERIAL No.:
MFR.:	SUR.:	PROTECTION ANGLE:



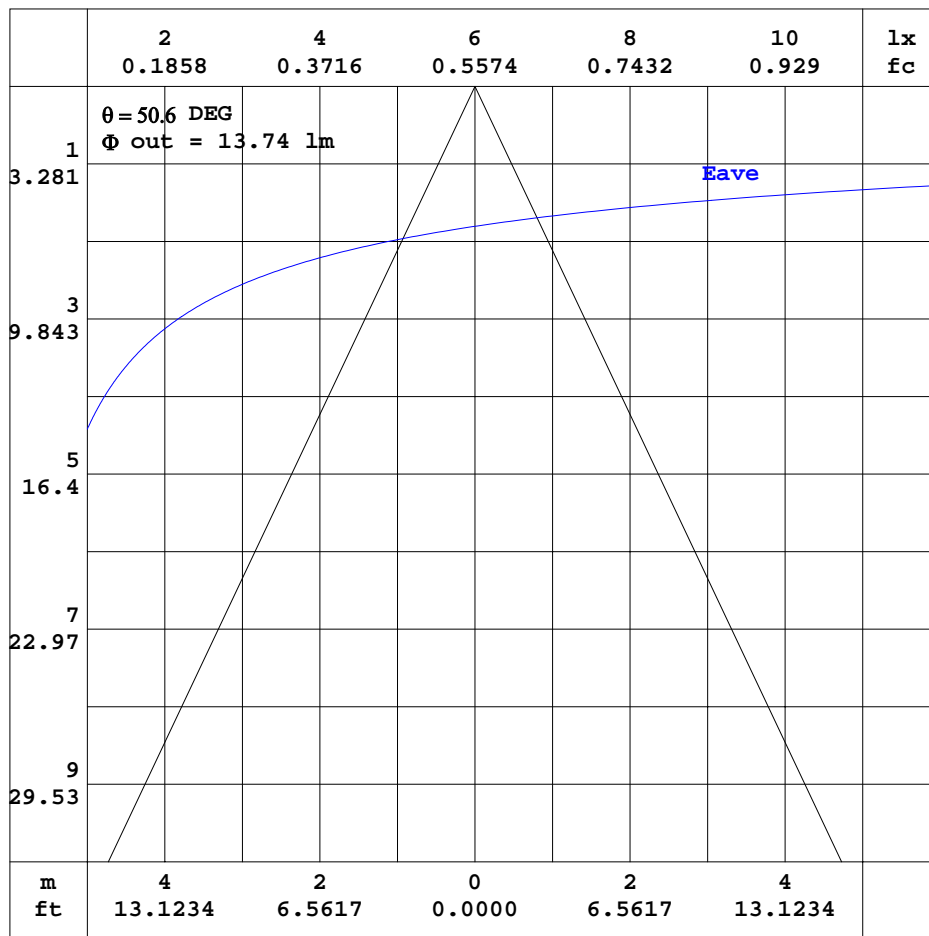
C Range: 0 - 360DEG
 C Interval: 15.0DEG
 Test Speed: HIGH
 Temperature: 25.3DEG
 Operators:
 Test Date: 2020-05-22

γ Range: 0 - 180DEG
 γ Interval: 1.0DEG
 Test System: EVERFINE GO-2000B_V1 SYSTEM V2.0.291
 Humidity: 65.0%
 Test Distance: 7.500m [K=1.0000]
 Remarks:



AAI CURVES

Test:U:119.9V I:0.1271A P:14.96W PF:0.9820 Lamp Flux:876.182x1 lm		
NAME:	TYPE:	WEIGHT:
SPEC.:	DIM.:	SERIAL No.:
MFR.:	SUR.:	PROTECTION ANGLE:



Note: The Curves indicate the illuminated area and the average illumination when the luminaire is at different distance.

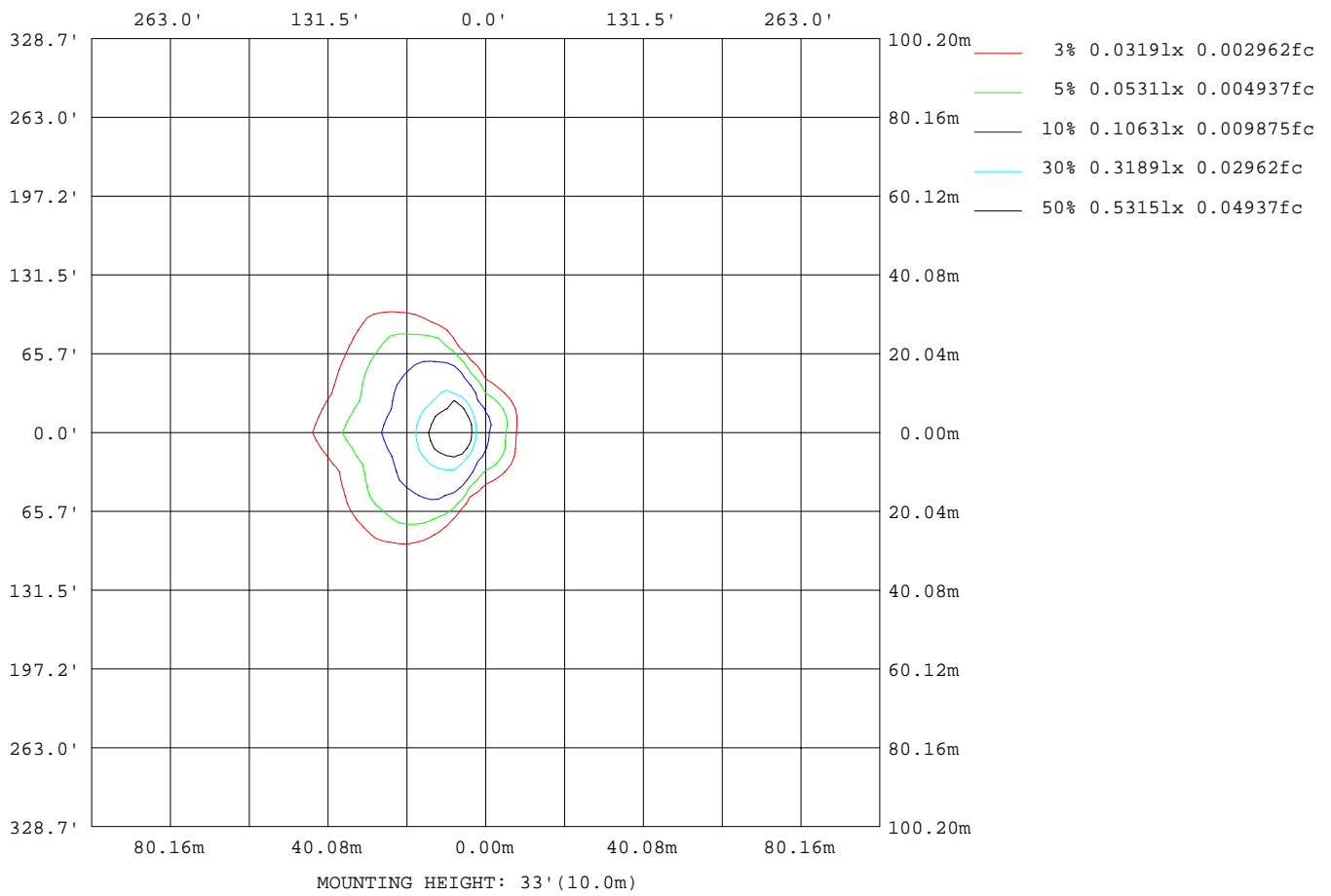
C Range: 0 - 360DEG
 C Interval: 15.0DEG
 Test Speed: HIGH
 Temperature: 25.3DEG
 Operators:
 Test Date: 2020-05-22

γ Range: 0 - 180DEG
 γ Interval: 1.0DEG
 Test System: EVERFINE GO-2000B_V1 SYSTEM V2.0.291
 Humidity: 65.0%
 Test Distance: 7.500m [K=1.0000]
 Remarks:



ISOLUX DIAGRAM

Test:U:119.9V I:0.1271A P:14.96W PF:0.9820 Lamp Flux:876.182x1 lm		
NAME:	TYPE:	WEIGHT:
SPEC.:	DIM.:	SERIAL No.:
MFR.:	SUR.:	PROTECTION ANGLE:



C Range: 0 - 360DEG
 C Interval: 15.0DEG
 Test Speed: HIGH
 Temperature: 25.3DEG
 Operators:
 Test Date: 2020-05-22

γ Range: 0 - 180DEG
 γ Interval: 1.0DEG
 Test System: EVERFINE GO-2000B_V1 SYSTEM V2.0.291
 Humidity: 65.0%
 Test Distance: 7.500m [K=1.0000]
 Remarks:



LED Avg.L Report

Test:U:119.9V I:0.1271A P:14.96W PF:0.9820 Lamp Flux:876.182x1 lm		
NAME:	TYPE:	WEIGHT:
SPEC.:	DIM.:	SERIAL No.:
MFR.:	SUR.:	PROTECTION ANGLE:

AvgL	cd/m2
L_0~180(65)av	2950
L_0~180(75)av	5775
L_0~180(85)av	22325
L_90~270(65)av	335
L_90~270(75)av	506
L_90~270(85)av	1282
L_45(65)av	2367
L_45(75)av	4388
L_45(85)av	16491

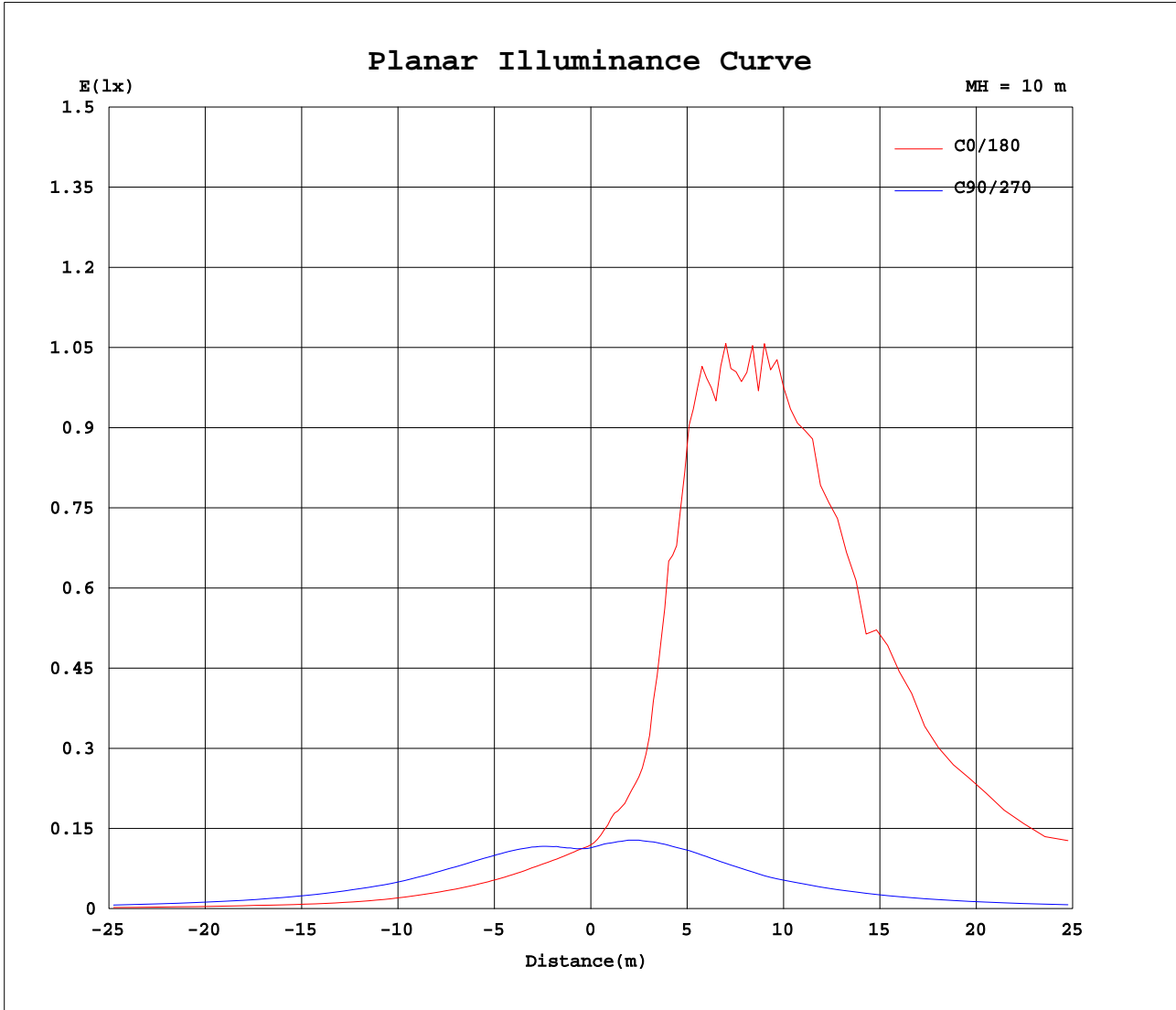
Standard: GB/T 29293-2012

C Range: 0 - 360DEG
 C Interval: 15.0DEG
 Test Speed: HIGH
 Temperature:25.3DEG
 Operators:
 Test Date:2020-05-22

γ Range: 0 - 180DEG
 γ Interval: 1.0DEG
 Test System:EVERFINE GO-2000B_V1 SYSTEM V2.0.291
 Humidity:65.0%
 Test Distance:7.500m [K=1.0000]
 Remarks:



Planar Illuminance Curve



C Range: 0 - 360DEG
C Interval: 15.0DEG
Test Speed: HIGH
Temperature: 25.3DEG
Operators:
Test Date: 2020-05-22

γ Range: 0 - 180DEG
 γ Interval: 1.0DEG
Test System: EVERFINE GO-2000B_V1 SYSTEM V2.0.291
Humidity: 65.0%
Test Distance: 7.500m [K=1.0000]
Remarks:



LUMINOUS DISTRIBUTION INTENSITY DATA

Test:U:119.9V I:0.1271A P:14.96W PF:0.9820 Lamp Flux:876.182x1 lm		
NAME:	TYPE:	WEIGHT:
SPEC.:	DIM.:	SERIAL No.:
MFR.:	SUR.:	PROTECTION ANGLE:

Table--1 UNIT: cd

C(DEG) γ (DEG)	0	15	30	45	60	75	90	105	120	135	150	165	180	195	210	225	240	255	270
0	12.0	11.8	11.6	11.6	11.5	11.6	11.4	11.5	11.7	11.9	12.2	12.2	12.0	11.8	11.6	11.6	11.5	11.6	11.4
5	10.8	10.6	10.5	10.6	10.7	10.9	11.4	12.5	13.8	15.0	16.0	16.8	15.8	16.4	15.5	15.2	14.3	13.5	12.4
10	9.75	9.66	9.75	10.2	10.8	11.4	12.2	14.1	16.6	18.6	20.0	20.7	20.6	21.4	20.6	19.8	17.7	15.6	13.3
15	9.03	8.96	9.29	10.0	10.9	11.8	12.9	15.7	18.6	21.3	26.2	30.7	29.2	29.7	27.4	23.6	20.2	17.4	14.1
20	8.29	8.32	8.90	9.82	10.9	12.0	13.5	17.2	20.7	28.6	43.7	59.3	60.2	55.4	44.4	32.5	22.7	18.9	14.7
25	7.68	7.76	8.41	9.60	10.8	12.1	13.9	17.8	23.6	44.5	75.6	101	101	101	80.1	51.0	26.9	19.5	15.1
30	7.19	7.27	8.00	9.35	10.7	12.1	14.2	18.5	30.3	65.1	107	140	156	151	125	75.2	36.7	21.4	15.5
35	6.72	6.85	7.66	9.10	10.6	12.2	14.3	19.5	40.4	82.5	146	173	192	189	145	97.7	53.0	23.5	15.5
40	6.32	6.43	7.32	8.92	10.5	12.1	14.3	20.6	47.2	102	171	217	234	231	171	131	68.7	24.4	15.3
45	5.77	5.96	7.01	8.74	10.3	11.9	14.1	21.7	60.7	118	186	238	276	267	175	140	81.0	26.6	15.1
50	5.23	5.42	6.61	8.52	10.1	11.8	14.3	23.0	76.4	155	183	261	298	255	195	163	93.2	30.3	15.3
55	4.90	5.09	6.26	8.16	9.93	11.7	14.2	23.5	81.9	156	208	277	272	253	208	192	99.4	32.0	15.3
60	5.10	4.84	6.02	7.80	9.63	11.4	14.0	24.7	92.4	168	208	265	273	255	198	191	136	33.9	15.1
65	4.77	4.66	5.77	7.41	9.17	11.0	13.6	24.5	103	179	216	204	245	214	249	207	121	38.8	14.7
70	4.04	4.12	5.53	6.96	8.65	10.5	13.2	23.8	111	201	212	206	233	193	212	221	147	44.4	14.3
75	3.47	3.62	5.16	6.42	8.06	9.90	12.5	23.6	115	200	230	205	295	221	232	242	152	46.7	13.6
80	3.56	3.65	5.06	6.07	7.43	9.11	11.8	24.2	131	251	284	215	303	236	247	271	148	47.2	12.8
85	3.62	3.70	5.28	5.94	7.01	8.27	10.7	23.5	139	260	290	233	386	299	301	304	172	43.9	11.6
90	3.62	3.73	5.29	5.92	6.85	7.74	9.87	23.7	127	245	303	277	442	323	268	305	166	43.4	11.4
95	3.68	3.72	5.05	5.92	6.91	7.83	10.2	22.9	128	241	294	248	399	293	288	279	166	45.3	12.4
100	3.62	3.70	4.93	6.01	7.25	8.61	11.2	23.4	127	242	264	232	317	245	230	259	164	41.0	13.2
105	3.54	3.82	5.01	6.37	7.83	9.50	12.3	22.8	118	221	226	197	272	219	242	239	154	39.4	14.0
110	3.47	4.02	5.06	6.32	8.25	10.3	12.7	21.3	104	195	244	187	236	189	227	230	141	33.9	14.4
115	3.43	3.83	5.07	6.83	7.59	9.23	11.5	18.5	82.1	168	206	188	206	214	225	190	129	30.3	14.4
120	3.49	3.60	4.76	7.05	8.63	9.28	11.5	17.1	83.5	164	191	232	280	257	204	198	99.5	25.1	12.3
125	3.62	3.84	4.65	6.24	8.50	9.80	11.7	15.7	55.5	147	191	228	290	251	204	159	71.6	20.3	11.4
130	3.38	3.33	4.76	5.78	7.12	8.35	10.2	14.1	42.5	119	168	220	288	259	180	88.2	53.6	19.7	10.9
135	3.53	3.72	4.42	6.08	6.48	6.95	8.51	11.8	36.5	68.6	112	185	250	211	125	73.7	45.2	19.1	11.5
140	3.28	3.07	4.01	5.76	6.83	6.72	8.24	9.78	34.3	33.5	58.3	112	140	108	90.4	86.1	36.5	17.7	11.4
145	4.09	3.54	4.05	5.37	6.42	6.56	7.96	10.4	23.4	39.1	51.5	88.7	82.5	58.9	66.1	69.6	25.9	12.4	9.26
150	3.75	3.84	4.11	6.04	5.88	6.13	7.65	9.55	17.0	26.4	55.6	79.2	77.7	76.5	69.8	48.0	17.7	10.1	7.40
155	2.96	2.98	3.21	4.29	4.81	4.63	6.06	7.22	13.4	19.3	39.4	68.1	80.2	62.4	46.2	17.2	12.5	9.77	5.92
160	2.96	2.93	3.06	2.91	2.97	2.78	3.97	4.53	8.04	12.1	23.4	39.8	45.7	31.4	16.6	12.4	8.07	7.45	4.38
165	2.98	2.92	2.90	2.89	2.98	2.40	3.29	3.77	5.12	7.70	11.1	15.1	15.3	13.8	10.6	6.83	4.65	3.83	2.52
170	2.97	2.87	3.05	3.19	2.86	2.54	3.28	3.76	4.09	4.58	5.29	6.16	7.71	6.75	5.87	4.59	3.87	3.32	2.33
175	3.51	3.80	4.30	4.55	4.53	4.62	4.96	5.36	5.91	6.55	7.51	8.19	7.81	6.76	5.87	5.07	4.21	3.58	3.09
180	6.91	6.77	6.43	6.12	5.78	5.53	5.43	5.51	5.76	5.99	6.23	6.60	6.96	6.71	6.48	6.08	5.83	5.53	5.46

C Range: 0 - 360DEG
 C Interval: 15.0DEG
 Test Speed: HIGH
 Temperature:25.3DEG
 Operators:
 Test Date:2020-05-22

γ Range: 0 - 180DEG
 γ Interval: 1.0DEG
 Test System:EVERFINE GO-2000B_V1 SYSTEM V2.0.291
 Humidity:65.0%
 Test Distance:7.500m [K=1.0000]
 Remarks:



LUMINOUS DISTRIBUTION INTENSITY DATA

Test:U:119.9V I:0.1271A P:14.96W PF:0.9820 Lamp Flux:876.182x1 lm		
NAME:	TYPE:	WEIGHT:
SPEC.:	DIM.:	SERIAL No.:
MFR.:	SUR.:	PROTECTION ANGLE:

Table--2

UNIT: cd

C(DEG) γ (DEG)	285	300	315	330	345														
0	11.5	11.7	11.9	12.2	12.2														
5	11.7	11.5	11.3	11.3	11.1														
10	12.2	11.6	11.1	10.6	10.2														
15	12.5	11.6	10.8	10.2	9.56														
20	12.7	11.5	10.5	9.72	8.95														
25	12.7	11.3	10.3	9.23	8.36														
30	12.6	11.1	9.93	8.83	7.78														
35	12.6	10.9	9.64	8.43	7.25														
40	12.3	10.7	9.32	8.04	6.76														
45	12.0	10.3	9.02	7.70	6.22														
50	11.8	9.97	8.62	7.22	5.65														
55	11.3	9.48	8.09	6.72	5.28														
60	10.8	9.03	7.51	6.28	5.20														
65	10.3	8.43	6.96	5.78	4.82														
70	9.69	7.76	6.39	5.23	4.24														
75	8.98	7.08	5.84	4.77	3.68														
80	8.01	6.45	5.53	4.64	3.67														
85	7.18	6.05	5.42	4.92	3.62														
90	7.04	5.98	5.40	5.05	3.62														
95	7.74	6.20	5.36	4.72	3.65														
100	8.72	6.69	5.46	4.62	3.61														
105	9.57	7.36	5.93	4.80	3.55														
110	10.2	8.10	6.06	4.58	3.87														
115	10.2	7.66	6.01	4.85	3.79														
120	9.04	7.37	6.64	4.53	3.74														
125	8.94	7.87	7.01	4.19	3.72														
130	9.36	8.56	6.56	4.25	3.39														
135	9.83	8.34	5.79	4.39	3.22														
140	9.14	7.09	5.58	3.87	2.89														
145	7.38	6.31	5.90	3.48	2.98														
150	6.48	6.31	5.17	3.94	3.43														
155	5.92	5.87	4.59	3.10	2.73														
160	3.80	3.62	2.88	3.01	2.47														
165	2.59	2.71	2.73	2.73	2.41														
170	2.15	2.44	2.45	2.40	2.35														
175	2.96	3.08	3.33	3.11	2.98														
180	5.61	5.80	6.03	6.26	6.63														

C Range: 0 - 360DEG
 C Interval: 15.0DEG
 Test Speed: HIGH
 Temperature:25.3DEG
 Operators:
 Test Date:2020-05-22

γ Range: 0 - 180DEG
 γ Interval: 1.0DEG
 Test System:EVERFINE GO-2000B_V1 SYSTEM V2.0.291
 Humidity:65.0%
 Test Distance:7.500m [K=1.0000]
 Remarks: