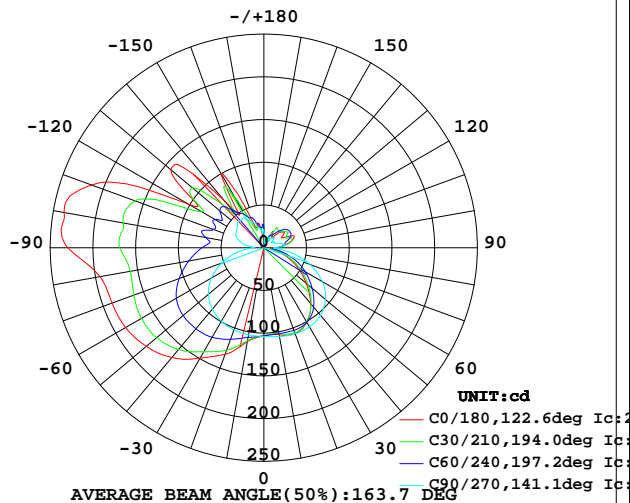


LUMINAIRE PHOTOMETRIC TEST REPORT

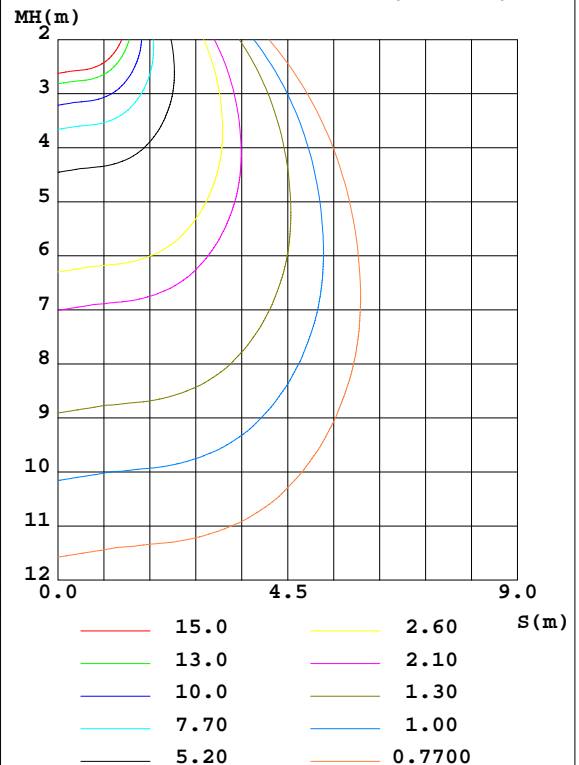
Test:U:120.0V I:0.1599A P:18.86W PF:0.9832 Lamp Flux:951.332x1 lm		
NAME: 4905BN-18	TYPE:LED	WEIGHT:
SPEC.:	DIM.:	SERIAL No.:
MFR.:	SUR.:	PROTECTION ANGLE:

DATA OF LAMP		PHOTOMETRIC DATA Eff: 50.45 lm/W			
MODEL	4905BN-18	I _{max} (cd)	238.4	S/MH(C0/180)	2.27
NOMINAL POWER(W)	20	LOR(%)	100.0	S/MH(C90/270)	1.44
RATED VOLTAGE(V)	120	TOTAL FLUX(lm)	951.33	η UP,DN(C0-180)	17.0,30.0
NOMINAL FLUX(lm)	951.332	CIE CLASS	SEMI-D.	η UP,DN(C180-360)	20.0,33.0
LAMPS INSIDE	1	η up(%)	37.0	CIBSE SHR NOM	1.75
TEST VOLTAGE(V)	120	η down(%)	63.0	CIBSE SHR MAX	1.75

LUMINOUS INTENSITY DISTRIBUTION DIAGRAM



C0 PLANE ISOLUX DIAGRAM (UNIT:lx)



C Range: 0 - 360DEG
C Interval: 15.0DEG
Test Speed: HIGH
Temperature:25.3DEG
Operators:
Test Date:2022-04-30

γ Range: 0 - 180DEG
γ Interval: 1.0DEG
Test System:EVERFINE GO-2000B_V1 SYSTEM V2.0.291
Humidity:65.0%
Test Distance:7.500m [K=1.0000]
Remarks:

ZONAL FLUX DIAGRAM

ZONAL FLUX DIAGRAM:

γ	C0	C45	C90	C135	C180	C225	C270	C315	γ	Φ zone	Φ total	Φ lum, lamp
10	103.3	101.6	105.6	115.3	111.5	108.2	103.5	103.6	0- 10	10.05	10.05	1.06,1.06
20	107.1	104.3	107.1	131.5	132.5	121.1	102.3	106.0	10- 20	31.53	41.58	4.37,4.37
30	100.6	100.8	106.8	144.4	149.2	131.4	99.48	105.5	20- 30	54.02	95.61	10,10
40	85.21	87.94	103.4	151.5	167.7	140.2	93.97	96.99	30- 40	73.95	169.6	17.8,17.8
50	65.02	70.71	94.24	151.8	179.7	145.8	84.71	79.69	40- 50	87.90	257.5	27.1,27.1
60	45.17	51.78	78.93	147.3	187.0	143.4	70.99	58.53	50- 60	93.98	351.4	36.9,36.9
70	26.12	31.91	57.64	138.2	189.1	135.0	52.62	39.39	60- 70	91.48	442.9	46.6,46.6
80	8.912	12.91	31.52	130.3	194.8	124.4	32.59	20.13	70- 80	82.02	524.9	55.2,55.2
90	14.30	16.18	12.52	125.6	229.5	117.8	12.01	12.01	80- 90	74.78	599.7	63,63
100	28.20	29.06	24.48	127.5	237.5	112.5	24.21	25.40	90-100	78.56	678.3	71.3,71.3
110	38.00	30.23	16.08	120.9	214.7	110.7	33.26	31.86	100-110	82.07	760.3	79.9,79.9
120	23.71	35.25	14.25	102.2	102.0	88.13	37.18	31.30	110-120	63.59	823.9	86.6,86.6
130	29.02	31.61	15.22	77.89	141.9	76.67	40.64	12.24	120-130	48.11	872.1	91.7,91.7
140	16.89	30.74	15.62	82.44	71.28	89.26	42.00	8.496	130-140	37.33	909.4	95.6,95.6
150	21.36	18.78	12.00	35.84	100.8	38.45	37.63	15.97	140-150	23.70	933.1	98.1,98.1
160	10.73	10.89	5.784	25.60	25.17	28.19	30.34	14.06	150-160	12.28	945.4	99.4,99.4
170	9.696	4.106	5.388	14.72	25.06	22.89	22.82	10.06	160-170	4.700	950.1	99.9,99.9
180	10.75	22.98	20.65	18.54	10.77	22.65	20.65	18.68	170-180	1.268	951.3	100,100
DEG	LUMINOUS INTENSITY:cd									UNIT:lm		

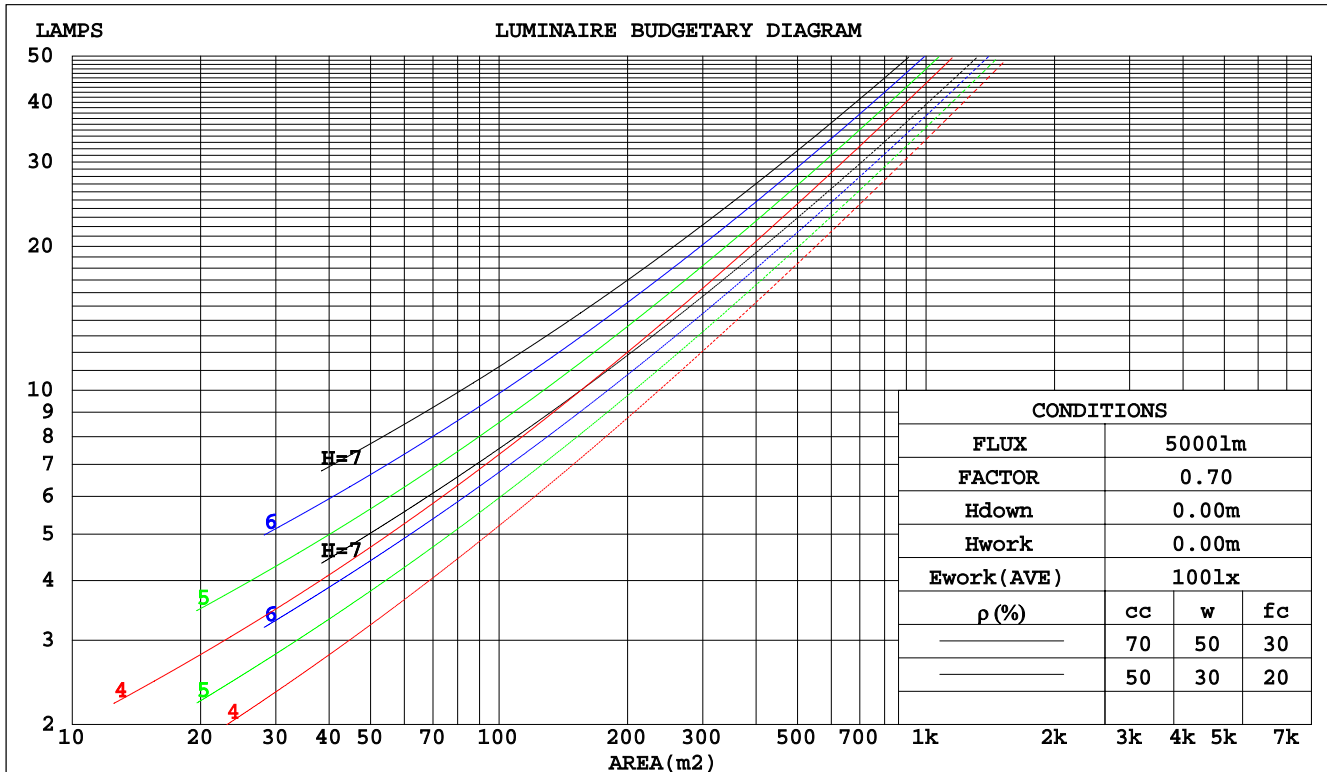
C Range: 0 - 360DEG
 C Interval: 15.0DEG
 Test Speed: HIGH
 Temperature:25.3DEG
 Operators:
 Test Date:2022-04-30

γ Range: 0 - 180DEG
 γ Interval: 1.0DEG
 Test System:EVERFINE GO-2000B_V1 SYSTEM V2.0.291
 Humidity:65.0%
 Test Distance:7.500m [K=1.0000]
 Remarks:

CU AND LUMINAIRE BUDGETARY ESTIMATE DIAGRAM

Test:U:120.0V I:0.1599A P:18.86W PF:0.9832 Lamp Flux:951.332x1 lm		
NAME: 4905BN-18	TYPE:LED	WEIGHT:
SPEC.:	DIM.:	SERIAL No.:
MFR	SUR.:	PROTECTION ANGLE:

pcc	80%			70%			50%			30%			10%			0
pw	50%	30%	10%	50%	30%	10%	50%	30%	10%	50%	30%	10%	50%	30%	10%	0
pfc	20%			20%			20%			20%			20%			0
RCR	RCR:Room Cavity Ratio						Coefficients of Utilization(CU)									
0.0	1.10	1.10	1.10	1.03	1.03	1.03	.91	.91	.91	.79	.79	.79	.68	.68	.68	.63
1.0	.91	.85	.81	.85	.80	.76	.74	.70	.67	.64	.61	.58	.54	.52	.50	.45
2.0	.77	.69	.63	.72	.65	.59	.63	.57	.52	.54	.49	.46	.46	.42	.39	.35
3.0	.67	.58	.51	.62	.54	.48	.54	.48	.42	.46	.41	.37	.39	.35	.32	.28
4.0	.58	.49	.42	.54	.46	.39	.47	.40	.35	.41	.35	.31	.34	.30	.26	.23
5.0	.51	.42	.35	.48	.40	.33	.42	.35	.29	.36	.30	.26	.30	.26	.22	.19
6.0	.46	.37	.30	.43	.34	.28	.37	.30	.25	.32	.26	.22	.27	.23	.19	.16
7.0	.41	.32	.26	.39	.30	.25	.34	.27	.22	.29	.23	.19	.25	.20	.17	.14
8.0	.37	.29	.23	.35	.27	.21	.30	.24	.19	.26	.21	.17	.23	.18	.15	.12
9.0	.34	.26	.20	.32	.24	.19	.28	.21	.17	.24	.19	.15	.21	.16	.13	.11
10.0	.31	.23	.18	.29	.22	.17	.26	.19	.15	.22	.17	.13	.19	.15	.12	.10



C Range: 0 - 360DEG
 C Interval: 15.0DEG
 Test Speed: HIGH
 Temperature: 25.3DEG
 Operators:
 Test Date: 2022-04-30

γ Range: 0 - 180DEG
 γ Interval: 1.0DEG
 Test System: EVERFINE GO-2000B_V1 SYSTEM V2.0.291
 Humidity: 65.0%
 Test Distance: 7.500m [K=1.0000]
 Remarks:

WEC AND CCEC

Test:U:120.0V I:0.1599A P:18.86W PF:0.9832 Lamp Flux:951.332x1 lm								
NAME: 4905BN-18				TYPE:LED			WEIGHT:	
SPEC.:				DIM.:			SERIAL No.:	
MFR.:				SUR.:			PROTECTION ANGLE:	

pcc	80%			70%			50%			30%			10%			0	
pw	50%	30%	10%	50%	30%	10%	50%	30%	10%	50%	30%	10%	50%	30%	10%	0	
pfc	20%			20%			20%			20%			20%			0	
RCR	RCR:Room Cavity Ratio						Wall Exitance Coefficients(WEC)										
0.0																	
1.0	.389	.221	.070	.370	.211	.067	.336	.192	.061	.304	.175	.056	.274	.159	.051		
2.0	.332	.182	.056	.315	.174	.054	.284	.158	.049	.255	.143	.045	.228	.129	.041		
3.0	.294	.156	.047	.278	.149	.045	.250	.135	.041	.223	.122	.037	.198	.110	.034		
4.0	.263	.137	.040	.250	.131	.039	.223	.118	.035	.199	.107	.032	.176	.096	.029		
5.0	.239	.122	.035	.226	.116	.034	.202	.105	.031	.180	.095	.028	.159	.085	.026		
6.0	.219	.110	.031	.207	.105	.030	.185	.095	.028	.164	.085	.025	.145	.076	.023		
7.0	.202	.100	.028	.191	.095	.027	.170	.086	.025	.151	.077	.023	.133	.069	.020		
8.0	.187	.091	.026	.177	.087	.025	.158	.079	.023	.140	.071	.020	.123	.063	.018		
9.0	.174	.084	.023	.165	.080	.023	.147	.073	.021	.130	.065	.019	.115	.058	.017		
10.0	.163	.078	.022	.154	.074	.021	.138	.067	.019	.122	.061	.017	.108	.054	.016		

pcc	80%			70%			50%			30%			10%			0
pw	50%	30%	10%	50%	30%	10%	50%	30%	10%	50%	30%	10%	50%	30%	10%	0
pfc	20%			20%			20%			20%			20%			0
RCR	RCR:Room Cavity Ratio						Ceiling Cavity Exitance Coefficients(CCEC)									
0.0	.472	.472	.472	.403	.403	.403	.275	.275	.275	.158	.158	.158	.051	.051	.051	
1.0	.470	.439	.412	.402	.377	.355	.275	.259	.245	.158	.150	.143	.051	.048	.046	
2.0	.463	.418	.379	.397	.359	.328	.272	.249	.228	.157	.145	.134	.050	.047	.044	
3.0	.456	.402	.358	.391	.347	.311	.269	.241	.218	.155	.141	.128	.050	.046	.042	
4.0	.449	.390	.345	.385	.337	.300	.265	.235	.211	.153	.138	.125	.049	.045	.041	
5.0	.442	.381	.336	.379	.329	.292	.261	.230	.206	.151	.135	.122	.049	.044	.040	
6.0	.434	.373	.329	.373	.323	.286	.258	.226	.203	.149	.133	.120	.048	.043	.040	
7.0	.428	.367	.324	.368	.318	.282	.254	.223	.200	.148	.131	.119	.048	.043	.039	
8.0	.421	.361	.320	.363	.313	.279	.251	.220	.198	.146	.130	.118	.047	.043	.039	
9.0	.415	.357	.318	.358	.310	.277	.248	.218	.197	.144	.129	.117	.047	.042	.039	
10.0	.409	.353	.315	.353	.306	.275	.245	.216	.195	.143	.127	.117	.046	.042	.039	

C Range: 0 - 360DEG
 C Interval: 15.0DEG
 Test Speed: HIGH
 Temperature:25.3DEG
 Operators:
 Test Date:2022-04-30

γ Range: 0 - 180DEG
 γ Interval: 1.0DEG
 Test System:EVERFINE GO-2000B_V1 SYSTEM V2.0.291
 Humidity:65.0%
 Test Distance:7.500m [K=1.0000]
 Remarks:

UGR(Unified Glare Rating) Table

Test:U:120.0V I:0.1599A P:18.86W PF:0.9832 Lamp Flux:951.332x1 lm											
NAME: 4905BN-18					TYPE:LED			WEIGHT:			
SPEC.:					DIM.:			SERIAL No.:			
MFR.:					SUR.:			PROTECTION ANGLE:			
ceiling/cavity	0.7	0.7	0.5	0.5	0.3	0.7	0.7	0.5	0.5	0.3	
walls	0.5	0.3	0.5	0.3	0.3	0.5	0.3	0.5	0.3	0.3	
working plane	0.2	0.2	0.2	0.2	0.2	0.2	0.2	0.2	0.2	0.2	
Room dimensions		Viewed crosswise					Viewed endwise				
x = 2H y = 2H	8.4	9.6	9.1	10.4	11.3	10.1	11.3	10.8	12.0	13.0	
	3H	9.6	10.7	10.4	11.5	12.4	12.1	13.2	12.8	13.9	
	4H	10.0	11.1	10.8	11.9	12.8	13.0	14.0	13.8	14.8	
	6H	10.2	11.2	11.0	12.0	13.0	13.9	14.8	14.6	15.6	
	8H	10.3	11.2	11.1	12.0	13.0	14.2	15.1	15.0	15.9	
	12H	10.5	11.4	11.3	12.2	13.2	14.5	15.4	15.3	16.2	
4H	2H	9.0	10.0	9.8	10.8	11.8	10.3	11.3	11.1	12.1	
	3H	10.3	11.2	11.1	12.1	13.1	12.4	13.3	13.2	14.1	
	4H	10.9	11.7	11.7	12.5	13.6	13.4	14.2	14.2	15.1	
	6H	11.2	11.9	12.0	12.7	13.8	14.4	15.1	15.2	15.9	
	8H	11.2	11.9	12.1	12.8	13.9	14.8	15.4	15.6	16.3	
	12H	11.5	12.2	12.4	13.1	14.2	15.1	15.8	16.0	16.7	
8H	4H	11.1	11.8	11.9	12.6	13.7	13.4	14.1	14.3	14.9	
	6H	11.5	12.1	12.4	13.0	14.1	14.4	15.0	15.3	15.9	
	8H	11.7	12.2	12.6	13.1	14.3	14.9	15.4	15.8	16.4	
	12H	12.2	12.6	13.1	13.5	14.7	15.4	15.9	16.3	16.8	
12H	4H	11.1	11.7	12.0	12.6	13.7	13.3	14.0	14.2	14.8	
	6H	11.6	12.1	12.5	13.0	14.1	14.4	14.9	15.3	15.8	
	8H	11.8	12.3	12.7	13.2	14.4	14.9	15.4	15.8	16.3	
Variations with the observer position at spacings:											
S = 1.0H	+ 0.2 / - 0.3					+ 0.1 / - 0.1					
1.5H	+ 0.2 / - 0.4					+ 0.3 / - 0.3					
2.0H	+ 0.2 / - 0.4					+ 0.6 / - 0.6					

CIE Pub.117 Corrected 951.3 lm Total Lamp Luminous Flux.(8log(F/F0) = -0.2)

C Range: 0 - 360DEG
 C Interval: 15.0DEG
 Test Speed: HIGH
 Temperature:25.3DEG
 Operators:
 Test Date:2022-04-30

γ Range: 0 - 180DEG
 γ Interval: 1.0DEG
 Test System:EVERFINE GO-2000B_V1 SYSTEM V2.0.291
 Humidity:65.0%
 Test Distance:7.500m [K=1.0000]
 Remarks:

UTILIZATION FACTORS TABLE

Test:U:120.0V I:0.1599A P:18.86W PF:0.9832 Lamp Flux:951.332x1 lm		
NAME: 4905BN-18	TYPE:LED	WEIGHT:
SPEC.:	DIM.:	SERIAL No.:
MFR.:	SUR.:	PROTECTION ANGLE:

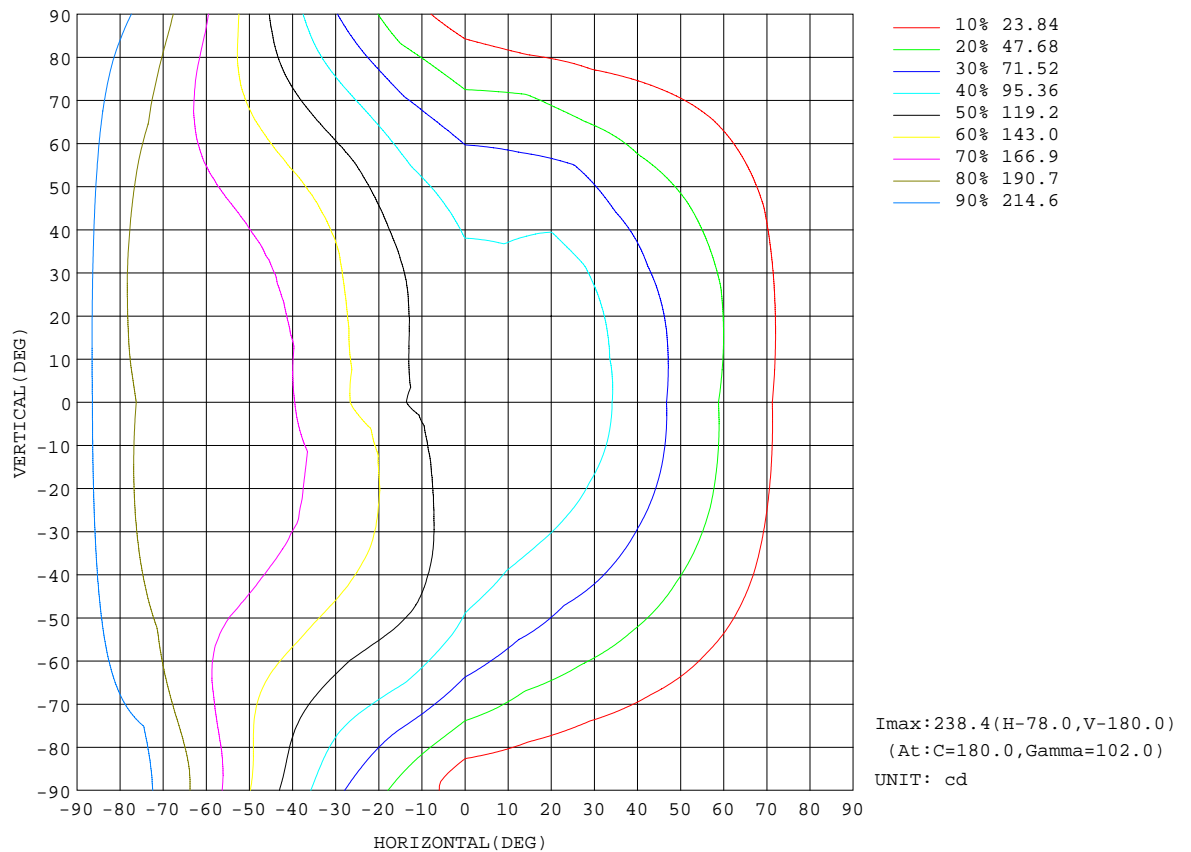
REFLECTANCE										
Ceiling	0.8	0.8	0.8	0.7	0.7	0.7	0.5	0.5	0.5	0
Walls	0.7	0.5	0.3	0.7	0.5	0.3	0.7	0.5	0.3	0
Working plane	0.2	0.2	0.2	0.2	0.2	0.2	0.2	0.2	0.2	0
ROOM INDEX	UTILIZATION FACTORS(PERCENT) $k(RI) \times RCR = 5$									
$k = 0.60$	41	28	21	39	27	20	36	26	20	13
0.80	50	36	28	47	35	27	43	33	26	17
1.00	57	43	35	54	42	34	49	41	32	21
1.25	64	51	42	61	49	40	55	45	37	26
1.50	69	56	47	66	54	45	59	49	42	29
2.00	77	65	56	73	62	54	64	56	49	34
2.50	82	71	62	77	67	59	68	60	54	37
3.00	86	76	67	81	71	64	71	64	58	40
4.00	91	82	75	85	77	71	75	69	64	44
5.00	94	86	80	88	81	76	77	72	68	46
ROOM INDEX	UF(total)									Direct
According to DIN EN 13032-2 2004			Suspended					SHRNOM = 1.25		

C Range: 0 - 360DEG
 C Interval: 15.0DEG
 Test Speed: HIGH
 Temperature:25.3DEG
 Operators:
 Test Date:2022-04-30

γ Range: 0 - 180DEG
 γ Interval: 1.0DEG
 Test System:EVERFINE GO-2000B_V1 SYSTEM V2.0.291
 Humidity:65.0%
 Test Distance:7.500m [K=1.0000]
 Remarks:

ISOCANDELA DIAGRAM

Test:U:120.0V I:0.1599A P:18.86W PF:0.9832 Lamp Flux:951.332x1 lm		
NAME: 4905BN-18	TYPE:LED	WEIGHT:
SPEC.:	DIM.:	SERIAL No.:
MFR.:	SUR.:	PROTECTION ANGLE:

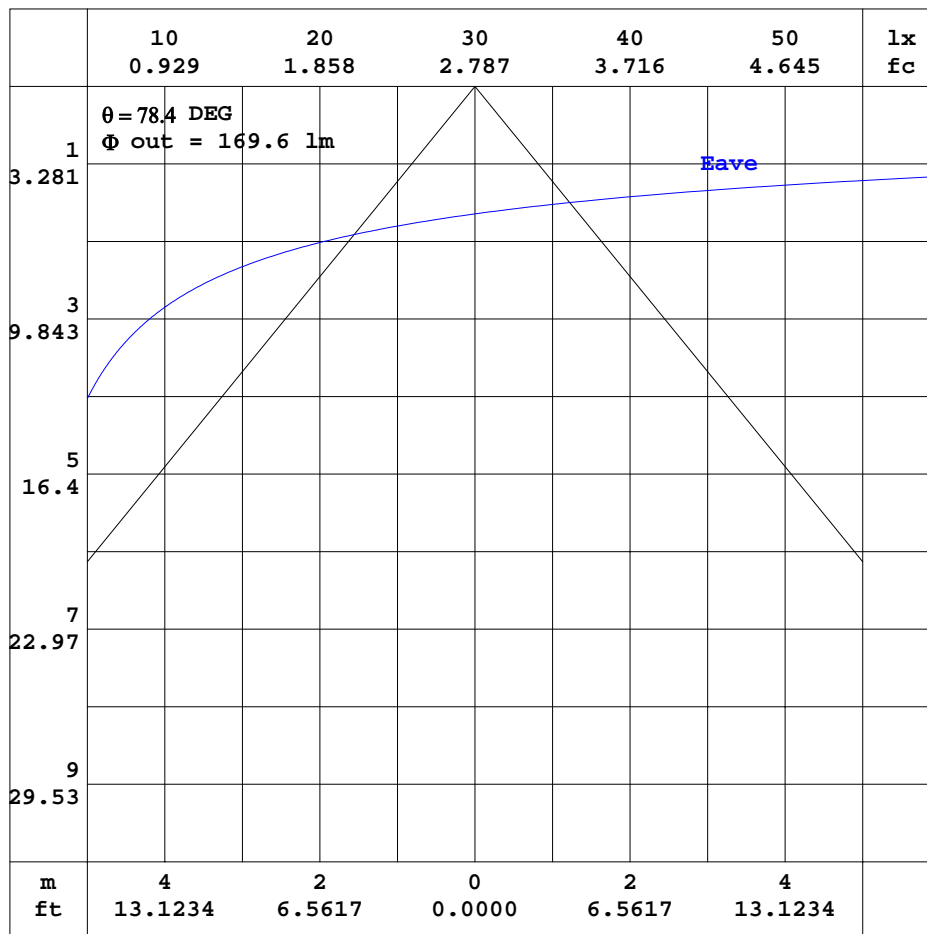


C Range: 0 - 360DEG
C Interval: 15.0DEG
Test Speed: HIGH
Temperature:25.3DEG
Operators:
Test Date:2022-04-30

γ Range: 0 - 180DEG
 γ Interval: 1.0DEG
Test System:EVERFINE GO-2000B_V1 SYSTEM V2.0.291
Humidity:65.0%
Test Distance:7.500m [K=1.0000]
Remarks:

AAI CURVES

Test:U:120.0V I:0.1599A P:18.86W PF:0.9832 Lamp Flux:951.332x1 lm		
NAME: 4905BN-18	TYPE:LED	WEIGHT:
SPEC.:	DIM.:	SERIAL No.:
MFR.:	SUR.:	PROTECTION ANGLE:



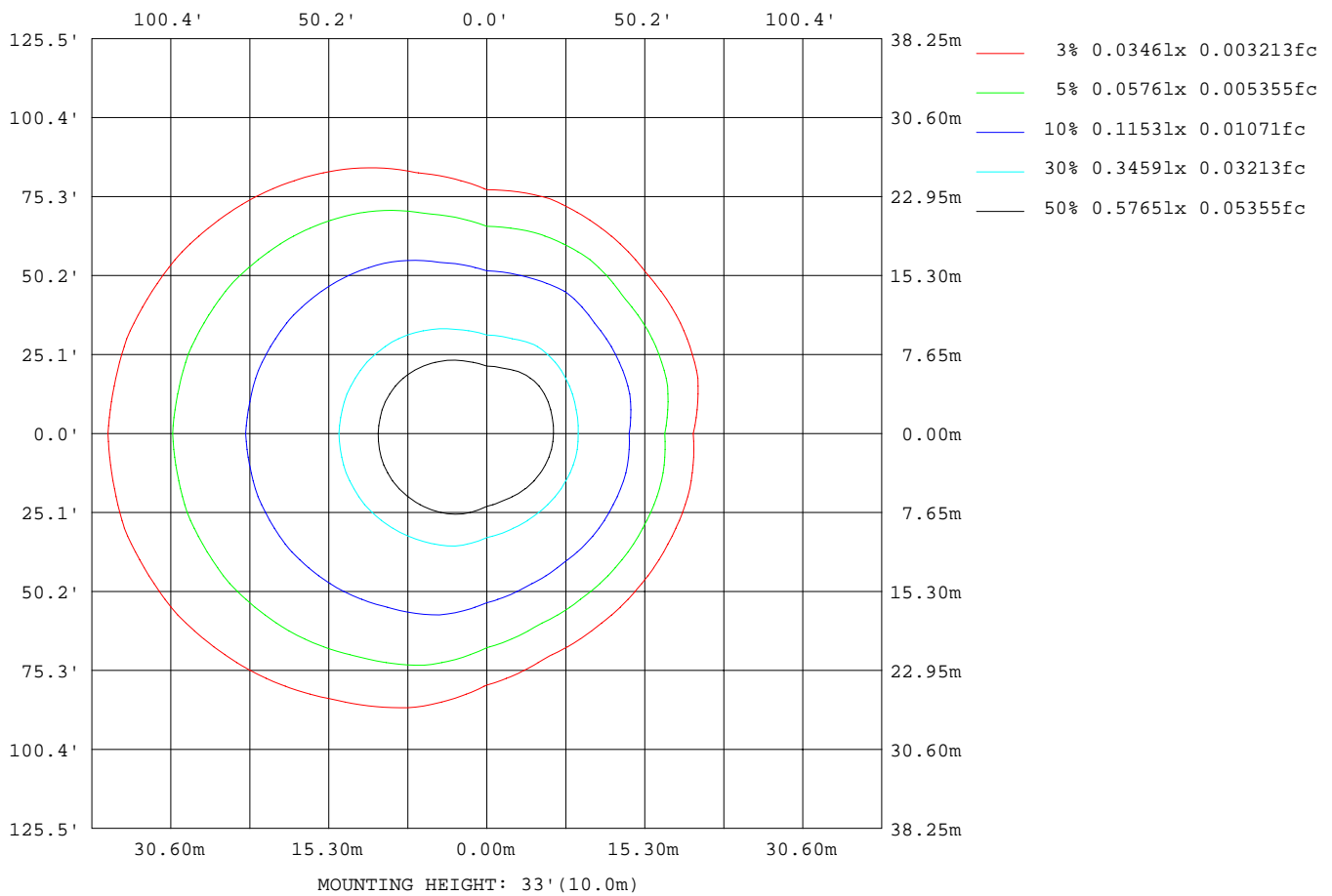
Note: The Curves indicate the illuminated area and the average illumination when the luminaire is at different distance.

C Range: 0 - 360DEG
 C Interval: 15.0DEG
 Test Speed: HIGH
 Temperature: 25.3DEG
 Operators:
 Test Date: 2022-04-30

γ Range: 0 - 180DEG
 γ Interval: 1.0DEG
 Test System: EVERFINE GO-2000B_V1 SYSTEM V2.0.291
 Humidity: 65.0%
 Test Distance: 7.500m [K=1.0000]
 Remarks:

ISOLUX DIAGRAM

Test:U:120.0V I:0.1599A P:18.86W PF:0.9832 Lamp Flux:951.332x1 lm		
NAME: 4905BN-18	TYPE:LED	WEIGHT:
SPEC.:	DIM.:	SERIAL No.:
MFR.:	SUR.:	PROTECTION ANGLE:



C Range: 0 - 360DEG
 C Interval: 15.0DEG
 Test Speed: HIGH
 Temperature: 25.3DEG
 Operators:
 Test Date: 2022-04-30

γ Range: 0 - 180DEG
 γ Interval: 1.0DEG
 Test System: EVERFINE GO-2000B_V1 SYSTEM V2.0.291
 Humidity: 65.0%
 Test Distance: 7.500m [K=1.0000]
 Remarks:

LED Avg.L Report

Test:U:120.0V I:0.1599A P:18.86W PF:0.9832 Lamp Flux:951.332x1 lm		
NAME: 4905BN-18	TYPE:LED	WEIGHT:
SPEC.:	DIM.:	SERIAL No.:
MFR.:	SUR.:	PROTECTION ANGLE:

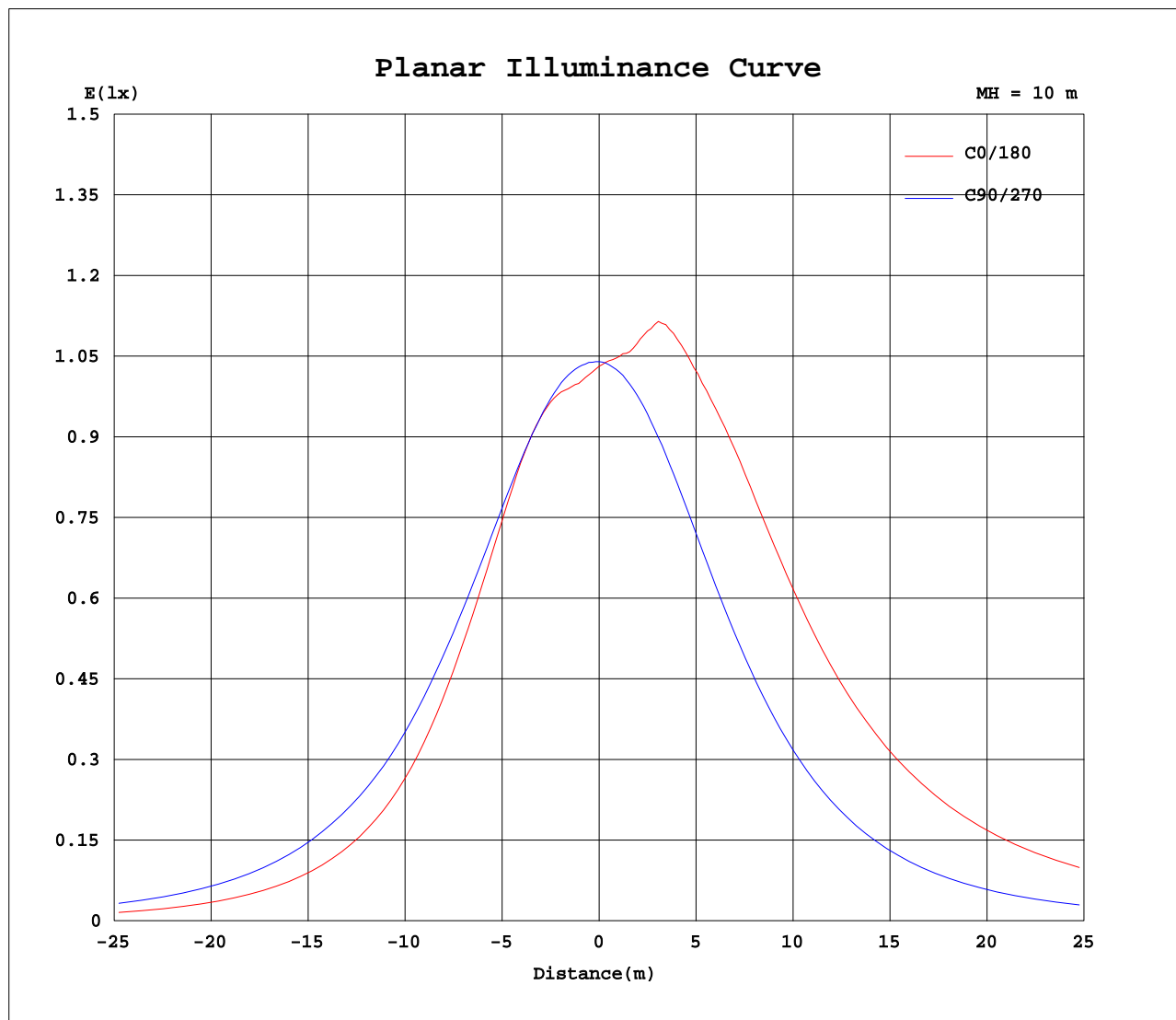
AvgL	cd/m2
L_0~180(65)av	2651
L_0~180(75)av	4004
L_0~180(85)av	12532
L_90~270(65)av	1551
L_90~270(75)av	1686
L_90~270(85)av	2275
L_45(65)av	2211
L_45(75)av	3037
L_45(85)av	7819

Standard: GB/T 29293-2012

C Range: 0 - 360DEG
C Interval: 15.0DEG
Test Speed: HIGH
Temperature:25.3DEG
Operators:
Test Date:2022-04-30

γ Range: 0 - 180DEG
 γ Interval: 1.0DEG
Test System:EVERFINE GO-2000B_V1 SYSTEM V2.0.291
Humidity:65.0%
Test Distance:7.500m [K=1.0000]
Remarks:

Planar Illuminance Curve



C Range: 0 - 360DEG
C Interval: 15.0DEG
Test Speed: HIGH
Temperature: 25.3DEG
Operators:
Test Date: 2022-04-30

γ Range: 0 - 180DEG
 γ Interval: 1.0DEG
Test System: EVERFINE GO-2000B_V1 SYSTEM V2.0.291
Humidity: 65.0%
Test Distance: 7.500m [K=1.0000]
Remarks:

LUMINOUS DISTRIBUTION INTENSITY DATA

Test:U:120.0V I:0.1599A P:18.86W PF:0.9832 Lamp Flux:951.332x1 lm																		
NAME: 4905BN-18									TYPE:LED					WEIGHT:				
SPEC.:									DIM.:					SERIAL No.:				
MFR.:									SUR.:					PROTECTION ANGLE:				

Table--1

UNIT: cd

C(DEG) γ (DEG)	0	15	30	45	60	75	90	105	120	135	150	165	180	195	210	225	240	255	270
0	103	103	103	103	103	104	104	104	104	104	104	104	103	103	103	103	103	104	104
5	102	102	101	101	102	104	105	106	107	108	109	108	106	106	105	105	105	105	104
10	103	103	102	102	102	104	106	108	112	115	117	117	112	113	111	108	107	106	104
15	106	106	105	103	102	104	106	111	118	123	127	128	122	123	119	115	110	106	103
20	107	107	106	104	103	104	107	114	124	131	137	139	133	132	128	121	114	107	102
25	105	105	104	104	103	103	107	117	129	139	145	147	140	139	134	127	118	108	101
30	101	100	100	101	101	102	107	120	134	144	152	156	149	148	141	131	121	109	99.5
35	94.1	94.0	93.9	95.1	96.9	99.2	106	121	137	149	158	163	159	158	148	136	123	108	97.1
40	85.2	86.2	86.2	87.9	90.7	95.4	103	122	137	152	163	169	168	165	156	140	124	107	94.0
45	75.1	76.5	77.4	79.5	82.7	89.6	99.3	120	137	152	166	174	175	171	160	144	124	104	89.8
50	65.0	66.8	67.7	70.7	73.8	82.3	94.2	117	134	152	168	178	180	175	164	146	123	101	84.7
55	55.0	57.5	58.3	61.3	64.7	73.6	87.7	112	129	150	169	181	184	179	165	146	122	95.8	78.4
60	45.2	47.9	49.0	51.8	55.7	63.5	78.9	105	123	147	168	182	187	181	165	143	118	89.5	71.0
65	35.6	38.2	39.2	42.0	46.3	53.2	68.9	96.6	117	143	166	182	188	181	164	140	113	82.3	62.3
70	26.1	28.5	29.4	31.9	36.3	42.9	57.6	86.4	109	138	165	182	189	181	162	135	105	74.3	52.6
75	17.0	19.2	19.8	22.0	25.9	32.6	44.7	74.0	101	133	164	184	190	181	160	130	97.5	65.0	42.6
80	8.91	10.7	11.2	12.9	16.0	22.0	31.5	61.9	92.9	130	168	194	195	185	159	124	89.3	54.8	32.6
85	9.72	10.1	10.8	11.0	10.5	12.1	17.5	51.1	85.0	129	177	211	209	197	162	121	80.9	44.3	22.2
90	14.3	14.3	15.7	16.2	15.1	12.1	12.5	40.9	76.5	126	180	222	230	212	169	118	72.5	34.5	12.0
95	21.2	21.2	22.9	23.3	21.7	18.5	21.5	37.7	73.8	122	178	219	238	216	169	112	64.2	33.1	15.2
100	28.2	28.2	30.0	29.1	25.0	24.1	24.5	47.2	81.8	128	179	220	238	215	167	112	69.1	42.7	24.2
105	34.4	34.4	34.0	32.5	26.7	28.8	20.5	57.0	86.5	128	171	206	235	211	168	117	75.5	50.8	29.2
110	38.0	37.0	34.2	30.2	32.3	32.5	16.1	53.9	72.3	121	162	188	215	195	160	111	63.0	48.3	33.3
115	31.3	30.2	28.1	33.0	35.0	33.8	12.8	48.9	78.6	89.0	128	165	177	162	127	75.0	63.6	50.0	36.3
120	23.7	26.6	31.9	35.2	36.1	32.8	14.2	49.5	77.0	102	85.8	106	102	98.2	84.4	88.1	66.1	51.8	37.2
125	28.6	31.3	32.6	34.2	35.5	28.3	11.0	42.8	64.2	99.1	116	101	108	97.6	102	94.9	59.9	50.8	38.8
130	29.0	28.5	29.9	31.6	33.6	23.4	15.2	34.5	63.8	77.9	115	136	142	121	109	76.7	67.7	50.9	40.6
135	25.1	24.3	26.6	30.4	29.4	18.6	17.2	28.5	62.5	61.3	85.4	122	132	102	78.7	68.0	68.2	52.4	43.1
140	16.9	20.3	26.2	30.7	24.2	15.4	15.6	24.2	46.8	82.4	59.4	66.5	71.3	51.5	51.5	89.3	58.5	48.5	42.0
145	16.3	21.8	27.7	23.5	19.1	13.5	9.50	21.2	35.2	69.1	93.5	67.8	58.3	56.5	77.7	68.3	49.0	48.4	42.7
150	21.4	24.4	20.4	18.8	17.2	10.4	12.0	17.9	30.5	35.8	77.6	99.4	101	89.8	70.2	38.4	45.0	43.8	37.6
155	13.5	13.6	15.2	17.1	14.5	7.98	11.6	15.9	28.1	30.8	30.3	44.0	57.8	37.0	25.9	34.1	38.6	37.7	33.3
160	10.7	10.9	11.6	10.9	8.98	5.92	5.78	11.0	20.2	25.6	29.9	21.4	25.2	17.9	22.6	28.2	36.3	33.7	30.3
165	9.11	7.42	7.98	6.54	5.51	4.53	5.50	8.71	15.7	22.2	26.5	23.7	28.1	25.4	25.6	27.9	29.2	26.5	24.8
170	9.70	5.24	4.43	4.11	3.96	4.28	5.39	7.22	10.3	14.7	16.3	16.4	25.1	23.0	22.1	22.9	24.8	25.7	22.8
175	6.43	5.23	5.68	5.78	5.79	6.51	9.02	11.4	15.6	18.8	19.6	17.8	11.3	16.7	24.4	25.0	24.7	21.1	17.2
180	10.8	10.2	16.1	23.0	23.4	21.3	20.7	20.2	19.7	18.5	16.9	16.2	10.8	10.1	15.9	22.6	23.5	21.1	20.6

C Range: 0 - 360DEG
 C Interval: 15.0DEG
 Test Speed: HIGH
 Temperature:25.3DEG
 Operators:
 Test Date:2022-04-30

γ Range: 0 - 180DEG
 γ Interval: 1.0DEG
 Test System:EVERFINE GO-2000B_V1 SYSTEM V2.0.291
 Humidity:65.0%
 Test Distance:7.500m [K=1.0000]
 Remarks:

LUMINOUS DISTRIBUTION INTENSITY DATA

Test:U:120.0V I:0.1599A P:18.86W PF:0.9832 Lamp Flux:951.332x1 lm		
NAME: 4905BN-18	TYPE:LED	WEIGHT:
SPEC.:	DIM.:	SERIAL No.:
MFR.:	SUR.:	PROTECTION ANGLE:

Table--2

UNIT: cd

C(DEG) γ (DEG)	285	300	315	330	345													
0	104	104	104	104	104													
5	103	103	103	103	103													
10	103	103	104	104	104													
15	102	103	105	106	106													
20	102	104	106	107	108													
25	101	104	106	108	107													
30	99.4	103	105	105	103													
35	97.0	101	103	99.4	95.2													
40	93.7	98.2	97.0	91.6	86.8													
45	89.2	93.9	89.1	82.8	78.0													
50	83.6	87.6	79.7	73.4	69.8													
55	77.0	79.2	69.2	64.7	61.9													
60	69.7	68.8	58.5	56.2	53.1													
65	61.7	56.3	49.1	46.9	43.7													
70	51.9	42.7	39.4	37.4	34.2													
75	40.4	31.8	29.5	27.8	24.9													
80	26.3	21.7	20.1	18.7	16.1													
85	13.4	12.8	11.7	10.6	8.87													
90	14.1	13.0	12.0	11.1	10.5													
95	20.1	19.5	18.3	16.9	16.5													
100	25.0	25.2	25.4	23.8	23.4													
105	24.3	27.6	30.7	30.6	30.2													
110	19.7	30.1	31.9	34.0	34.7													
115	21.2	24.9	27.9	30.8	33.9													
120	24.6	11.1	31.3	24.4	25.7													
125	28.6	3.97	22.3	30.7	26.3													
130	31.7	9.11	12.2	25.1	32.3													
135	33.8	15.9	3.91	16.0	25.5													
140	34.1	19.8	8.50	5.90	15.8													
145	31.8	20.9	14.0	7.65	7.89													
150	29.8	21.7	16.0	13.8	11.9													
155	26.3	20.6	15.2	11.6	11.0													
160	22.4	17.2	14.1	10.7	8.50													
165	18.4	14.7	12.2	9.22	8.52													
170	16.5	12.1	10.1	8.97	9.36													
175	13.5	11.0	9.27	7.66	6.45													
180	20.1	19.9	18.7	17.0	16.2													

C Range: 0 - 360DEG
 C Interval: 15.0DEG
 Test Speed: HIGH
 Temperature:25.3DEG
 Operators:
 Test Date:2022-04-30

γ Range: 0 - 180DEG
 γ Interval: 1.0DEG
 Test System:EVERFINE GO-2000B_V1 SYSTEM V2.0.291
 Humidity:65.0%
 Test Distance:7.500m [K=1.0000]
 Remarks: