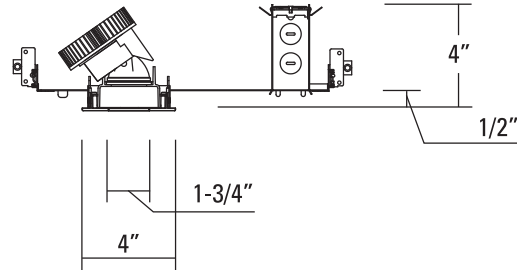
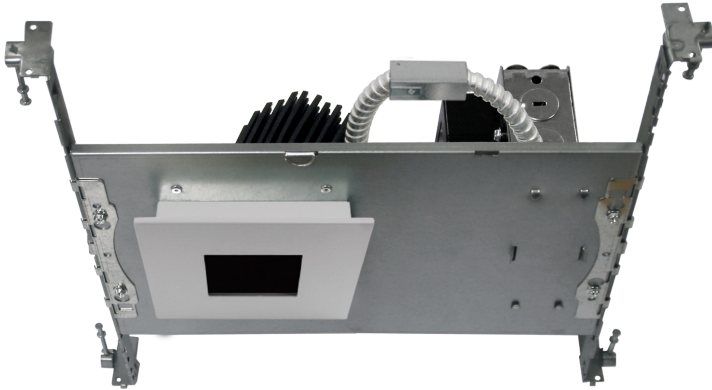


8341H

120V-277V Universal Voltage

Catalog #:		Type
Project:		Date
Prepared by:		

3.5" x 3.5" Non-IC Rated Type Square Aperture Architectural LED



Ceiling Cut-out: 3-3/4" (96.5mm) SQ
Mounting Frame: 12-1/8" (307.3mm) x 7-5/8" (193.8mm)

DESCRIPTION

An ideal solution for efficiency, safety, and flexible design aesthetics. Adjustable to position the housing at any point within a 24" joist span or grid section. Balances efficiency and cost to bring you the options needed to complete a variety of retrofit projects with a reliable and modern LED down light solution.

DESIGN FEATURES

Electrical

- 120V-277V Universal Voltage
- Triac and 0-10V dimmable driver
- High efficiency center beam options
- 50,000 hour projected life
- 10W, 845lm, 84.5lm/W
- 15W, 1085lm, 77.5lm/W
- 23W, 2000lm, 87lm/W
- CRI: 80
- CCT: 2700K, 3000K, 3500K, 4000K, or 5000K

Housing

- Adjustable trims may be directional 0-30° tilt and 356° rotational precision adjustment with position lock
- Interchangeable optics for beam spread of N: 15°, M: 38°, W: 60°

Junction Box

- J-box is listed for through-branch circuit wiring (4in – 4out), with seven 1/2" knockouts and four non-metallic cable knockouts with strain clamps
- 3-port quick connectors pre-installed in all J-boxes

Bar Hanger

- Pre-installed bar hangers are designed to fit "T" bar spine without additional clamps for use in drop ceilings
- Adjustable to position the housing at any point within a 24" joist span or grid section
- 4 captive nails for quick placement

Dimensions (W x H)

- 12-1/8" x 4"
- Aperture: 3-3/4"

Certifications

- cCSAus listed
- State of California Title 24
- 5 year limited warranty

MOQ

- Minimum Order Quantity: 150

Square Architectural LED

SPECIAL ORDER

TEL: 800.937.6925 | Fax: 800.207.9509 | www.rplighting.com

Specifications and dimensions subject to change without notice.



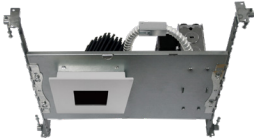
8341H

120V-277V Universal Voltage

Specification & Ordering


HOUSING

Example: 8341H-10-80-27K

Housing #	Wattage/Lumen	CRI	CCT
 8341H 120V-277V AC	-10W : 10W, 845lm	-80 : 80 CRI	-27K : 2700K
	-15W : 15W, 1085lm		-3K : 3000K
	-23W : 23W, 2000lm		-35K : 3500K
			-4K : 4000K
			-5K : 5000K


MODULE/TRIM

Example: 8353WH

Module/Trim #	Finish
 8353	WH : White
Straight fixed lamp Included "solite" soft focus lens	


MODULE/TRIM

Example: 8354WH

Module/Trim #	Finish
 8354	WH : White
Adjustable 0~30° tilt	

MODULE/TRIM

Example: 8355WH

Module/Trim #	Finish
 8355	WH : White
Fixed lamp position Select lens with clear or mist Available in wet location with gasket	

Square Architectural LED

SPECIAL ORDER