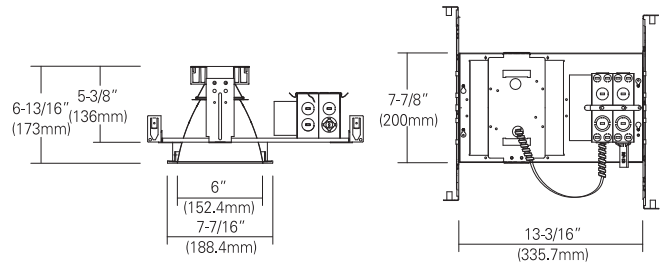
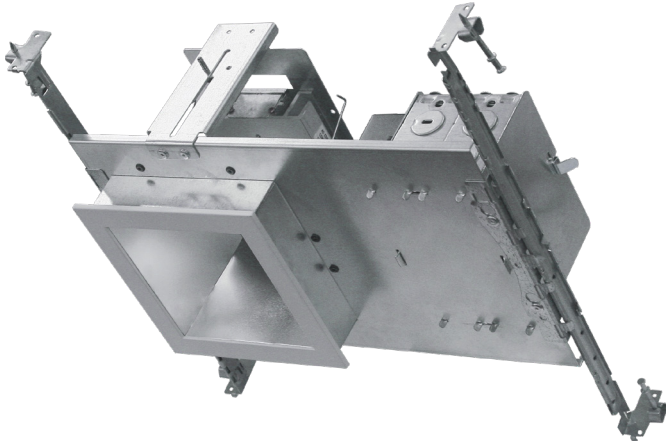


8360H

120V-277V Universal Voltage

Catalog #:		Type
Project:		Date
Prepared by:		

6" Square Architectural Downlight



Ceiling Cut-out: Ceiling Cut-out : 6" x 6"

DESCRIPTION

An ideal solution for efficiency, safety, and flexible design aesthetics. Adjustable to position the housing at any point within a 24" joist span or grid section. Balances efficiency and cost to bring you the options needed to complete a variety of retrofit projects with a reliable and modern LED down light solution.

DESIGN FEATURES

Electrical

- 120V-277V Universal Voltage
- Triac and 0-10V dimmable
- 15W, 1185lm, 79lm/W
- 20W, 1560lm, 78lm/W
- 30W, 2180lm, 73lm/W
- CRI: 80 CRI
- CCT: 2700K, 3000K, 3500K, 4000K, or 5000K
- Beam angle: 20°, 40°, or 70°

Housing

- Non-IC rated
- Galvanized steel construction.
- Housing adjusts for ceilings up to 1-1/4" thick.
- Aluminum extruded Heat sink designed to facilitate heat dissipation
- Heavy gauge aluminum reflector anodized in clear, haze, and pewter color finish

Junction Box

- J-box is listed for through-branch circuit wiring (4in – 4out), with seven 1/2" knockouts and four non-metallic cable knockouts with strain clamps
- 3-port quick connectors pre-installed in all J-boxes

Bar Hanger

- 24" Bar Hangers provide stability and support on joists and T-Bar Grid ceilings. Housing can be positioned at any point within 24" joist span

Dimensions (W x H)

- 12-1/8" x 7-5/8"
- Aperture: 6"

Certifications

- cCSAus for damp location
- State of California Title 24
- 5 year limited warranty

MOQ

- Minimum Order Quantity: 150

Square Architectural Downlight

SPECIAL ORDER

TEL: 800.937.6925 | Fax: 800.207.9509 | www.rplighting.com

Specifications and dimensions subject to change without notice.




8360H

120V-277V Universal Voltage

Specification & Ordering

HOUSING

Example: 8360H

Housing #	Wattage/Lumen	CRI	CCT
 8360H 120V-277V AC	-15W : 15W, 1185lm	-80 : 80 CRI	-27K : 2700K
	-20W : 20W, 1560lm	-90 : 90 CRI	-3K : 3000K
	-30W : 30W, 2180lm		-35K : 3500K
			-4K : 4000K
			-5K : 5000K

TRIM

Example: 8360-Trim-WH-WH

	Reflector Finish	Metal Trim Ring Finish
8360-Trim		
8360-Trim	-WH : White -HZ : Haze	-WH : White -BK : Black

Square Architectural Downlight

SPECIAL ORDER