

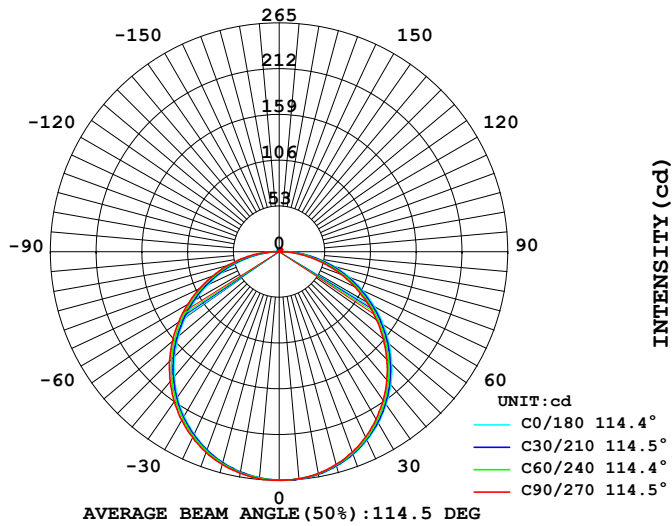
LUMINAIRE PHOTOMETRIC TEST REPORT

Report number:

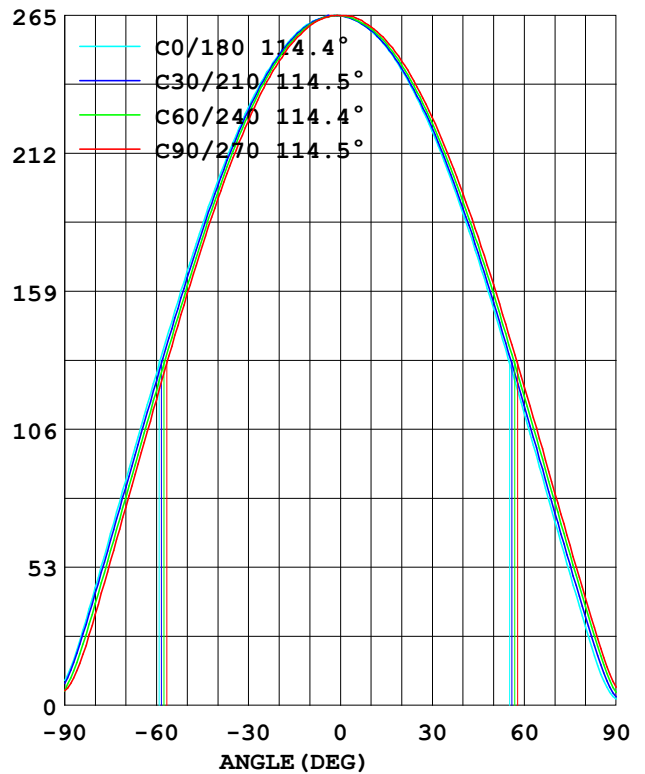
MANUFACTURER: RP Lighting + Fans			
Address:			
NAME: 1088LED	TYPE:	WEIGHT:	
SPECIFICATION:	CCT (K) : 0	DIMENSION:	SERIAL No. :

DATA OF LAMP	Imax (cd)	264.7	S/MH (C0/180)	1.29	
MODEL	EFFICIENCY (%)	100.0	S/MH (C90/270)	1.26	
NOMINAL POWER (W)	15.56	TOTAL FLUX (lm)	789.31	Voltage (V)	119.9
RATED VOLTAGE (V)	120	EFFICIENCY (lm/W)	50.7	Current (A)	0.133
NOMINAL FLUX (lm)	789.3	η up (%)	1.5	Power (W)	15.56
LAMPS QUANTITY	1	η down (%)	98.5	Power Factor (PF)	0.975
TEST VOLTAGE (V)	119.9	Effective Flux (lm)	789.3	EET	0.245

LUMINOUS INTENSITY DISTRIBUTION



LUMINOUS INTENSITY DISTRIBUTION



Test System:HOPOO HPG1800
 Temperature:25.3DEG
 Operators:
 Test Date:2020年11月25日

Test Set: 5.0deg/s C-Gamma (TYPE C)
 Humidity:65.0%
 Test Distance:8.740 m
 Remarks:

Color Temperature Data List

Report number:

MANUFACTURER: RP Lighting + Fans			
Address:			
NAME: 1088LED		TYPE:	WEIGHT:
SPECIFICATION:	CCT (K) : 0	DIMENSION:	SERIAL No. :

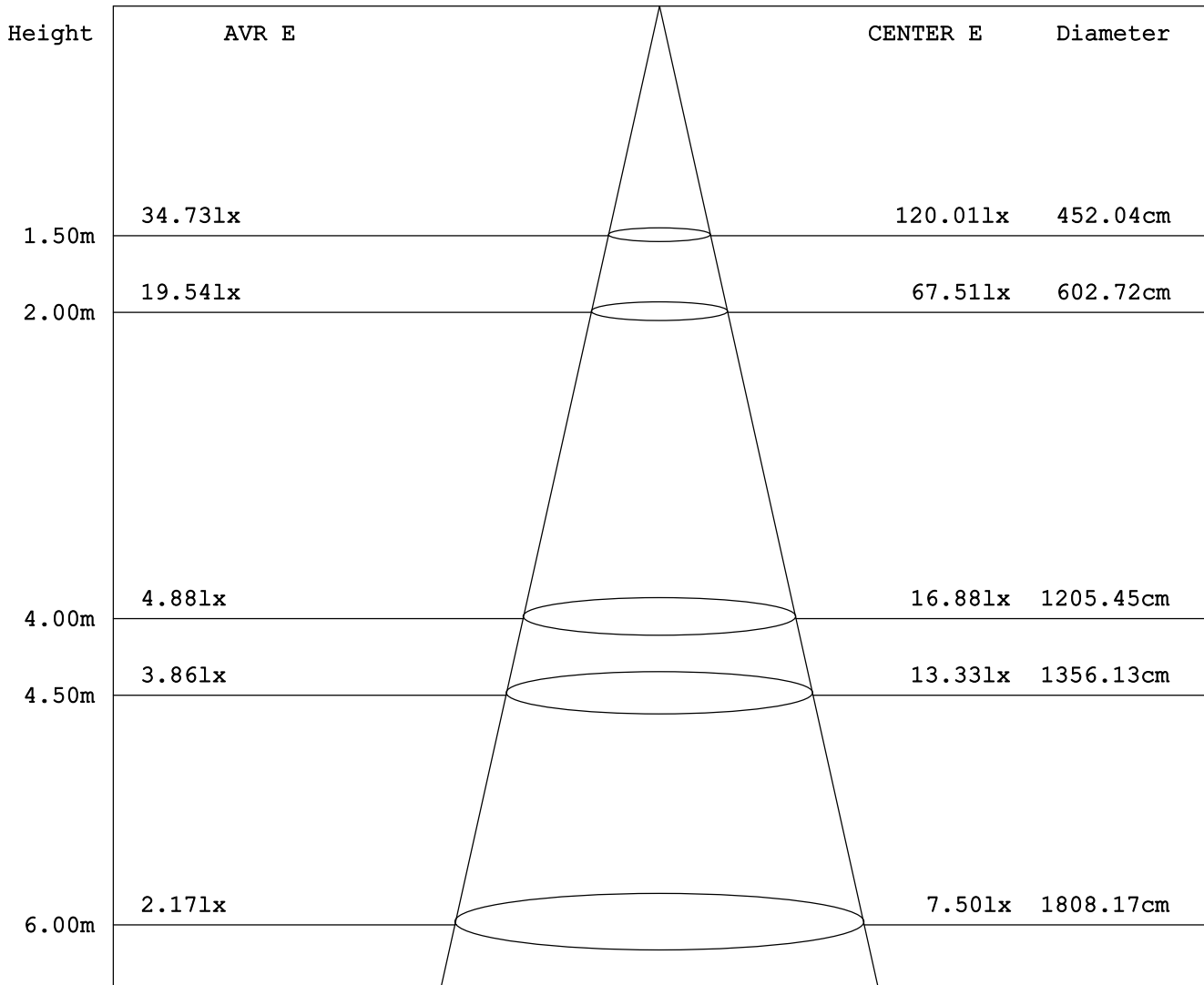
Test System:HOPOO HPG1800
Temperature:25.3DEG
Operators:
Test Date:2020年11月25日

Test Set: 5.0deg/s C-Gamma (TYPE C)
Humidity:65.0%
Test Distance:8.740 m
Remarks:

AVERAGE AND CENTER E Figure

Report number:

MANUFACTURER: RP Lighting + Fans			
Address:			
NAME: 1088LED		TYPE:	WEIGHT:
SPECIFICATION:	CCT (K) : 0	DIMENSION:	SERIAL No. :



Angle:112.9deg

Test System:HOPOO HPG1800
 Temperature:25.3DEG
 Operators:
 Test Date:2020年11月25日

Test Set: 5.0deg/s C-Gamma (TYPE C)
 Humidity:65.0%
 Test Distance:8.740 m
 Remarks:

HOPOO GONIOPHOTOMETERS SYSTEM TEST REPORT

ZONAL FLUX DIAGRAM

Report number:

MANUFACTURER: RP Lighting + Fans			
Address:			
NAME: 1088LED		TYPE:	WEIGHT:
SPECIFICATION:	CCT (K) : 0	DIMENSION:	SERIAL No. :

γ	C0	C45	C90	C135	C180	C225	C270	C315	γ	zone	total
5.0	263.9	263.1	263.6	262.3	262.5	263.3	263.4	264.1	0- 5	6.308	6.308
10.0	261.3	260.0	260.4	258.3	258.5	260.1	260.1	261.7	5- 10	18.72	25.03
15.0	256.7	254.3	254.6	251.9	252.3	254.8	254.7	257.2	10- 15	30.53	55.56
20.0	249.6	246.6	246.9	242.7	243.5	247.6	247.1	250.6	15- 20	41.32	96.89
25.0	240.4	236.7	236.6	231.8	232.8	237.2	237.1	241.6	20- 25	50.72	147.6
30.0	229.1	224.4	224.0	218.3	220.1	225.3	225.3	230.4	25- 30	58.39	206.0
35.0	215.7	209.9	210.0	203.1	205.1	211.8	211.6	217.6	30- 35	64.11	270.1
40.0	200.9	194.1	193.9	186.6	188.6	196.2	196.2	202.8	35- 40	67.65	337.7
45.0	184.0	176.1	176.1	168.2	171.1	179.1	179.5	186.5	40- 45	68.96	406.7
50.0	166.2	157.1	157.6	148.9	152.0	161.1	161.3	168.5	45- 50	68.03	474.7
55.0	147.1	137.7	137.6	129.0	132.0	141.7	142.0	148.2	50- 55	64.91	539.6
60.0	127.2	117.4	117.0	108.3	112.1	121.9	122.4	125.9	55- 60	59.76	599.4
65.0	107.1	96.92	96.88	87.36	91.40	101.7	102.1	102.4	60- 65	52.83	652.2
70.0	86.24	76.64	75.92	66.77	70.53	81.19	81.38	79.11	65- 70	44.45	696.7
75.0	65.89	56.05	55.43	43.18	50.33	60.61	61.34	60.99	70- 75	35.08	731.8
80.0	45.10	36.00	34.77	19.58	30.14	40.71	40.99	43.02	75- 80	24.94	756.7
85.0	24.75	17.54	16.04	7.016	11.89	21.34	21.72	24.13	80- 85	14.76	771.5
90.0	9.499	2.658	5.527	0.925	2.393	6.988	6.986	7.865	85- 90	6.026	777.5
95.0	3.814	0.076	2.763	0.077	0.748	2.810	1.151	3.238	90- 95	1.693	779.2
100.0	2.767	0.076	2.149	0.077	0.449	2.126	0.307	2.236	95-100	0.813	780.0
105.0	2.393	0.304	2.072	0.308	0.748	2.050	0.307	1.850	100-105	0.648	780.7
110.0	2.318	0.456	2.149	0.386	1.121	1.822	0.307	1.696	105-110	0.662	781.3
115.0	2.543	0.608	2.303	0.617	1.271	1.898	0.537	1.619	110-115	0.697	782.0
120.0	2.617	0.911	2.687	0.694	1.495	1.898	0.768	1.619	115-120	0.736	782.8
125.0	2.842	1.063	3.070	0.771	2.169	1.974	0.845	1.619	120-125	0.802	783.6
130.0	3.141	1.291	3.915	1.002	3.739	2.050	1.535	1.542	125-130	0.909	784.5
135.0	3.141	1.443	3.992	1.233	4.113	2.202	1.305	1.619	130-135	0.956	785.4
140.0	2.842	1.671	4.069	1.542	3.365	2.354	1.535	1.542	135-140	0.911	786.3
145.0	2.842	1.822	4.529	1.387	3.515	2.506	1.074	1.542	140-145	0.818	787.2
150.0	2.991	1.974	4.452	1.079	3.814	2.506	1.151	1.542	145-150	0.700	787.9
155.0	1.720	1.215	2.763	1.079	2.842	2.658	1.305	1.619	150-155	0.495	788.3
160.0	1.720	1.139	2.840	1.079	1.944	1.822	1.074	1.465	155-160	0.359	788.7
165.0	1.795	1.215	1.996	1.156	1.570	1.595	1.151	1.542	160-165	0.250	789.0
170.0	1.720	1.215	1.765	1.233	1.645	1.595	1.151	1.619	165-170	0.171	789.1
175.0	1.720	1.291	1.689	1.233	1.645	1.595	1.228	1.696	170-175	0.103	789.2
180.0	1.795	1.367	1.612	1.387	1.944	1.519	1.305	1.619	175-180	0.035	789.3
DEG	LUMINOUS INTENSITY:cd										UNIT:lm

Test System:HOPOO HPG1800
 Temperature:25.3DEG
 Operators:
 Test Date:2020年11月25日

Test Set: 5.0deg/s C-Gamma (TYPE C)
 Humidity:65.0%
 Test Distance:8.740 m
 Remarks:

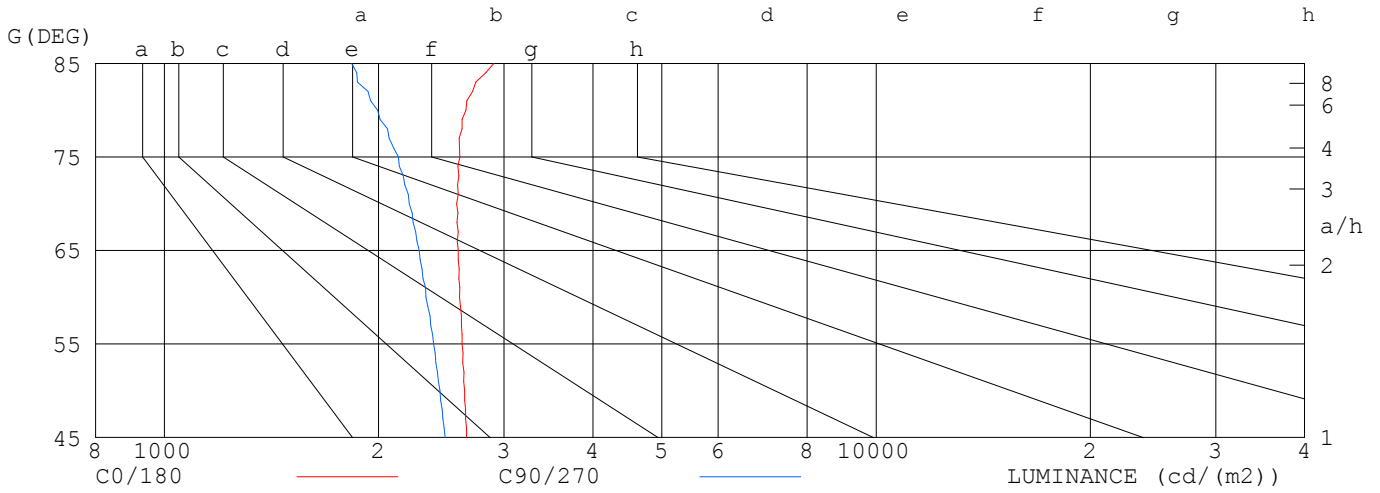
LUMINANCE LIMITATION CURVES

Report number:

MANUFACTURER: RP Lighting + Fans			
Address:			
NAME: 1088LED		TYPE:	WEIGHT:
SPECIFICATION:	CCT (K) : 0	DIMENSION:	SERIAL No. :

LUMINANCE LIMITATION CURVES

GLARE	CLASS	ILLUMINANCE (lx)							
		2000	1000	500	<=300				
1.15	A								
1.50	B		2000	1000	500	<=300			
1.85	C			2000	1000	500	<=300		
2.20	D				2000	1000	500	<=300	
2.55	E					2000	1000	500	<=300



G (DEG)	LUMINANCE cd/m2	
	C0/180	C90/270
85	2901	1832
80	2653	1993
75	2600	2131
70	2575	2209
65	2588	2281
60	2599	2330
55	2620	2388
50	2641	2440
45	2657	2479

Test System:HOPOO HPG1800
 Temperature:25.3DEG
 Operators:
 Test Date:2020年11月25日

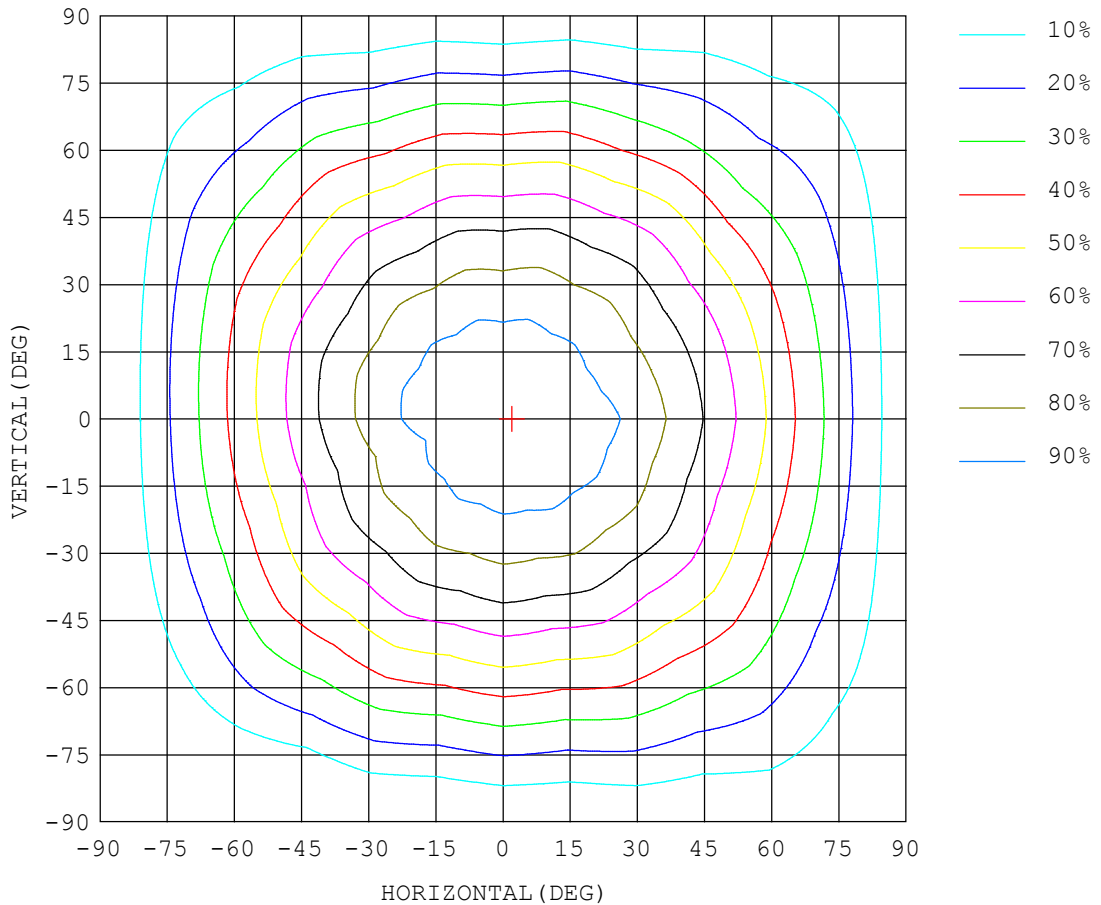
Test Set: 5.0deg/s C-Gamma (TYPE C)
 Humidity:65.0%
 Test Distance:8.740 m
 Remarks:

ISOCANDELA DIAGRAM

Report number:

MANUFACTURER: RP Lighting + Fans			
Address:			
NAME: 1088LED		TYPE:	WEIGHT:
SPECIFICATION:	CCT (K) : 0	DIMENSION:	SERIAL No. :

UNIT: cd



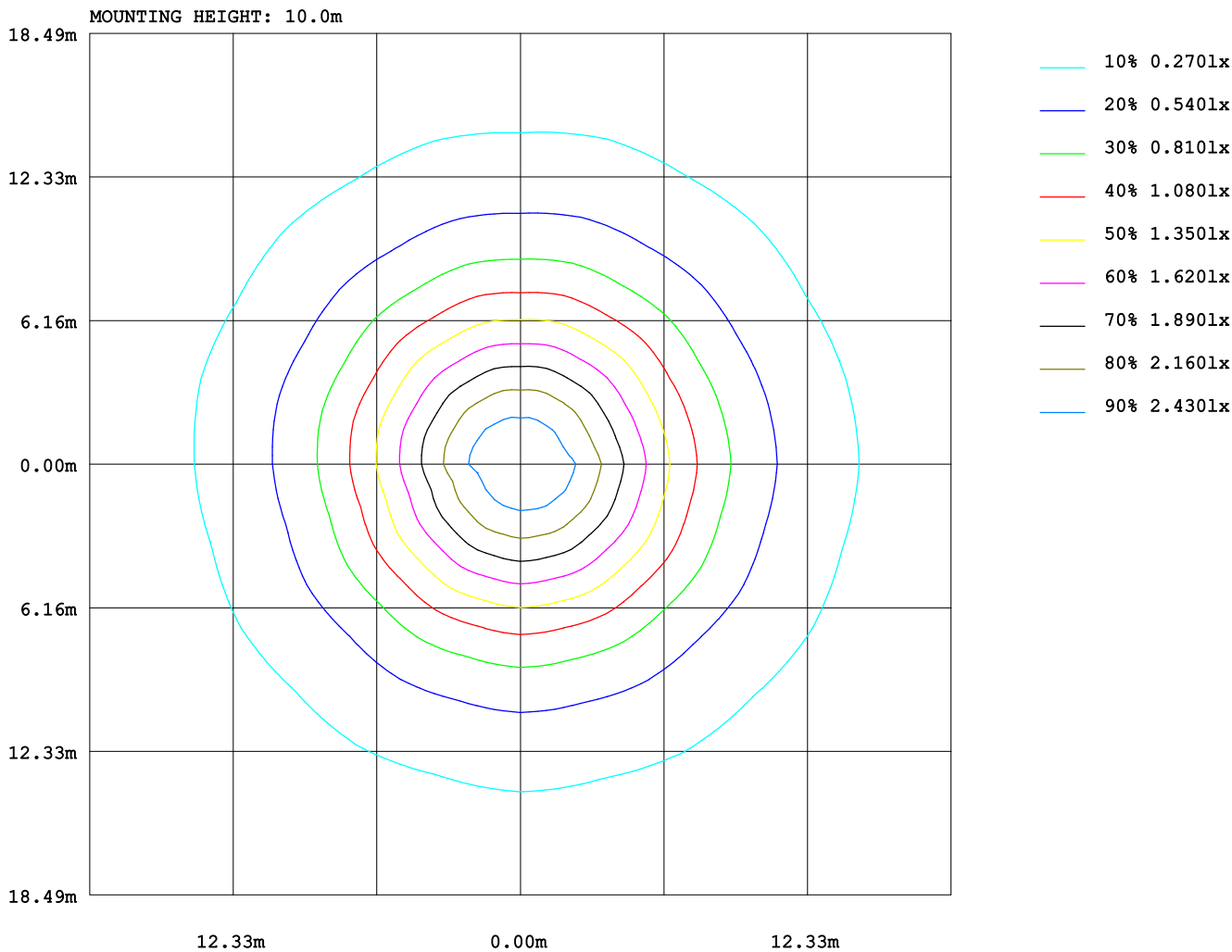
Test System:HOPOO HPG1800
 Temperature:25.3DEG
 Operators:
 Test Date:2020年11月25日

Test Set: 5.0deg/s C-Gamma (TYPE C)
 Humidity:65.0%
 Test Distance:8.740 m
 Remarks:

ISOLUX DIAGRAM

Report number:

MANUFACTURER: RP Lighting + Fans			
Address:			
NAME: 1088LED		TYPE:	WEIGHT:
SPECIFICATION:	CCT (K): 0	DIMENSION:	SERIAL No.:



Test System:HOPOO HPG1800
 Temperature:25.3DEG
 Operators:
 Test Date:2020年11月25日

Test Set: 5.0deg/s C-Gamma (TYPE C)
 Humidity:65.0%
 Test Distance:8.740 m
 Remarks: