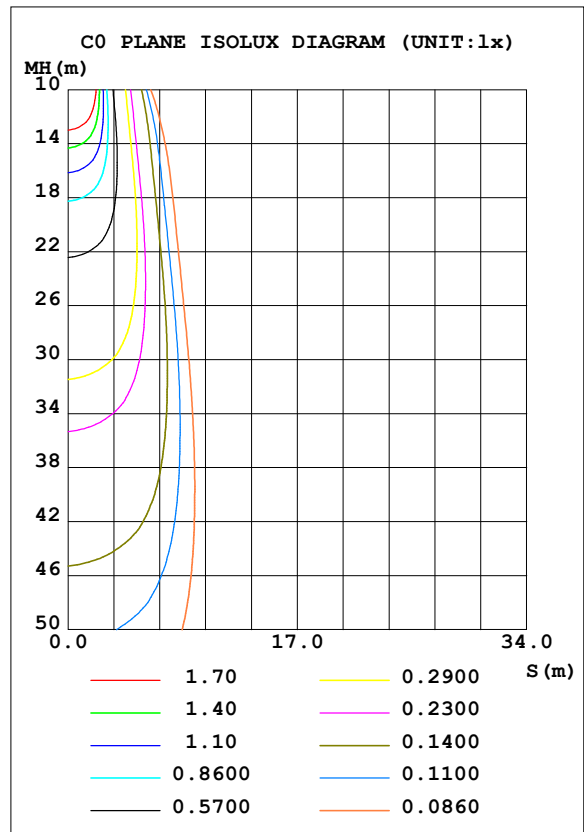
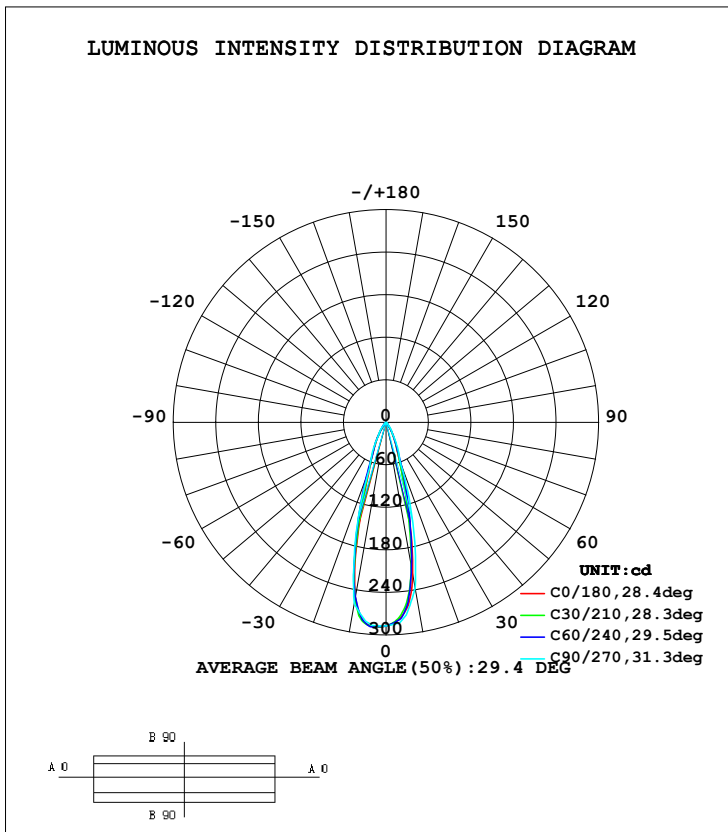


LUMINAIRE PHOTOMETRIC TEST REPORT

Test:U:0V I:0A P:0W PF:0 Lamp Flux:91.3281x1 lm		
NAME: RXEL25	TYPE:	WEIGHT:
SPEC.:	DIM.:	SERIAL No.:2020030401
	SUR.:0.073	PROTECTION ANGLE:

DATA OF LAMP		PHOTOMETRIC DATA			
MODEL	RXEL25	I _{max} (cd)	289.1	S/MH (C0/180)	0.47
NOMINAL POWER (W)		LOR (%)	100.0	S/MH (C90/270)	0.49
RATED VOLTAGE (V)	3.95	TOTAL FLUX (lm)	91.328	η UP, DN (C0-180)	0.0, 47.6
NOMINAL FLUX (lm)	91.3281	CIE CLASS	DIRECT	η UP, DN (C180-360)	0.0, 52.4
LAMPS INSIDE	1	η up (%)	0.0	CIBSE SHR NOM	0.00
TEST VOLTAGE (V)	3.95	η down (%)	100.0	CIBSE SHR MAX	1.00



C Range: 0 - 360DEG
 C Interval: 5.0DEG
 Test Speed: HIGH
 Temperature: 25.3DEG
 Operators: WLM
 Test Date: 2020-03-04

γ Range: 0 - 90DEG
 γ Interval: 0.5DEG
 Test System: EVERFINE GO-2000H_V1 SYSTEM V2.0.287
 Humidity: 65.0%
 Test Distance: 13.669m [K=1.0000]
 Remarks: DC 3.95V

ZONAL FLUX DIAGRAM

ZONAL FLUX DIAGRAM:

γ	C0	C45	C90	C135	C180	C225	C270	C315	γ	Φ zone	Φ total	%lum,lamp
5	272.8	271.1	278.4	282.8	287.1	288.2	284.3	278.8	0- 5	6.789	6.789	7.43,7.43
10	217.4	202.8	237.5	229.3	250.2	247.7	259.7	227.4	5- 10	18.49	25.28	27.7,27.7
15	114.0	111.0	147.3	135.5	144.1	151.6	163.9	130.4	10- 15	21.69	46.97	51.4,51.4
20	53.26	58.45	57.12	72.60	68.49	79.31	68.14	66.55	15- 20	15.98	62.95	68.9,68.9
25	30.28	32.52	37.46	39.22	39.57	42.56	44.99	35.79	20- 25	10.23	73.19	80.1,80.1
30	17.32	18.14	17.80	21.87	23.47	25.04	21.84	20.93	25- 30	7.187	80.37	88,88
35	7.736	8.390	12.43	10.64	10.84	12.45	15.22	10.17	30- 35	4.432	84.80	92.9,92.9
40	3.080	3.001	7.063	4.098	4.484	4.374	8.590	3.482	35- 40	2.539	87.34	95.6,95.6
45	1.739	1.890	2.194	2.251	2.026	2.556	2.590	2.127	40- 45	1.349	88.69	97.1,97.1
50	1.223	1.215	1.312	1.396	1.286	1.559	1.602	1.327	45- 50	0.6942	89.39	97.9,97.9
55	0.8590	0.7481	0.9298	0.8888	0.8574	0.9781	1.241	0.8561	50- 55	0.4855	89.87	98.4,98.4
60	0.6759	0.5948	0.5471	0.6462	0.6322	0.7664	0.8797	0.7358	55- 60	0.3748	90.25	98.8,98.8
65	0.5048	0.4890	0.4345	0.4418	0.4720	0.5880	0.7349	0.6564	60- 65	0.2955	90.54	99.1,99.1
70	0.3865	0.3530	0.3218	0.3159	0.3218	0.4974	0.5901	0.5542	65- 70	0.2395	90.78	99.4,99.4
75	0.2791	0.1901	0.2574	0.2824	0.2145	0.4802	0.4881	0.4095	70- 75	0.1924	90.97	99.6,99.6
80	0.1610	0.1508	0.1931	0.2049	0.1286	0.3778	0.3862	0.3101	75- 80	0.1543	91.13	99.8,99.8
85	0.0429	0.1216	0.1287	0.1192	0.0429	0.2808	0.2843	0.2467	80- 85	0.1170	91.25	99.9,99.9
90	0.0215	0.0967	0.0644	0.0322	0.0322	0.1824	0.1824	0.1824	85- 90	0.0830	91.33	100,100
95									90- 95			
100									95-100			
105									100-105			
110									105-110			
115									110-115			
120									115-120			
125									120-125			
130									125-130			
135									130-135			
140									135-140			
145									140-145			
150									145-150			
155									150-155			
160									155-160			
165									160-165			
170									165-170			
175									170-175			
180									175-180			
DEG	LUMINOUS INTENSITY:cd								UNIT:lm			

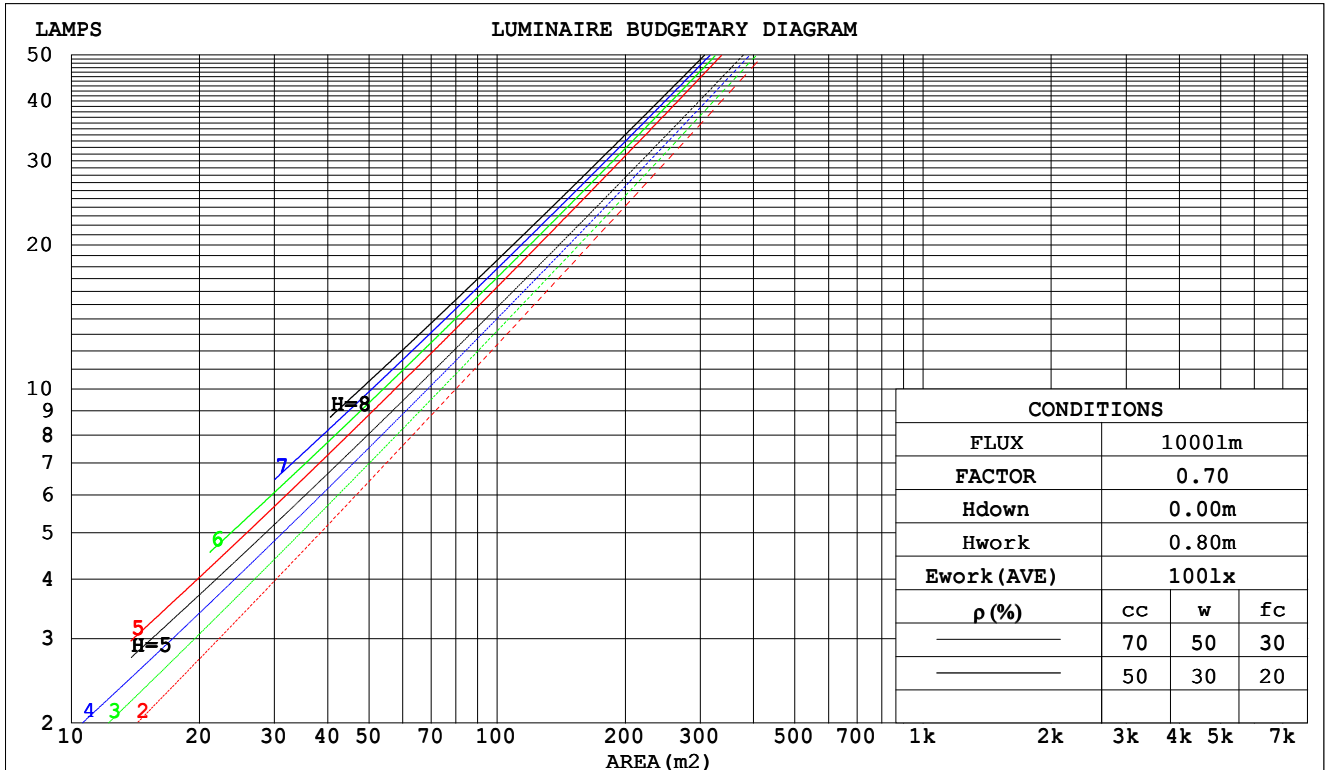
C Range: 0 - 360DEG
 C Interval: 5.0DEG
 Test Speed: HIGH
 Temperature:25.3DEG
 Operators:WLM
 Test Date:2020-03-04

γ Range: 0 - 90DEG
 γ Interval: 0.5DEG
 Test System:EVERFINE GO-2000H_V1 SYSTEM V2.0.287
 Humidity:65.0%
 Test Distance:13.669m [K=1.0000]
 Remarks: DC 3.95V

CU AND LUMINAIRE BUDGETARY ESTIMATE DIAGRAM

Test:U:0V I:0A P:0W PF:0 Lamp Flux:91.3281x1 lm		
NAME: RXEL25	TYPE:	WEIGHT:
SPEC.:	DIM.:	SERIAL No.:2020030401
	SUR.:0.073	PROTECTION ANGLE:

ρcc	80%			70%			50%			30%			10%			0
	ρw	30%	10%	50%	30%	10%	50%	30%	10%	50%	30%	10%	50%	30%	10%	0
ρfc	20%			20%			20%			20%			20%			0
RCR	RCR:Room Cavity Ratio															
	Coefficients of Utilization(CU)															
0.0	1.19	1.19	1.19	1.16	1.16	1.16	1.11	1.11	1.11	1.06	1.06	1.06	1.02	1.02	1.02	1.00
1.0	1.12	1.10	1.08	1.10	1.08	1.06	1.06	1.04	1.03	1.02	1.01	.00	.99	.98	.97	.95
2.0	1.06	1.03	.00	1.04	1.01	.99	1.01	.99	.96	.98	.96	.94	.96	.94	.93	.91
3.0	1.01	.97	.93	.99	.96	.93	.97	.94	.91	.94	.92	.90	.92	.90	.88	.87
4.0	.96	.91	.88	.95	.91	.88	.93	.89	.87	.91	.88	.86	.89	.87	.85	.83
5.0	.92	.87	.84	.91	.86	.83	.89	.85	.83	.88	.84	.82	.86	.83	.81	.80
6.0	.88	.83	.80	.87	.83	.80	.86	.82	.79	.85	.81	.79	.83	.80	.78	.77
7.0	.84	.80	.76	.84	.79	.76	.83	.79	.76	.82	.78	.75	.81	.77	.75	.74
8.0	.81	.77	.73	.81	.76	.73	.80	.76	.73	.79	.75	.73	.78	.75	.72	.71
9.0	.78	.74	.71	.78	.74	.71	.77	.73	.70	.76	.73	.70	.76	.72	.70	.69
10.0	.76	.71	.68	.75	.71	.68	.75	.71	.68	.74	.70	.68	.73	.70	.68	.67



C Range: 0 - 360DEG
 C Interval: 5.0DEG
 Test Speed: HIGH
 Temperature:25.3DEG
 Operators:WLM
 Test Date:2020-03-04

γ Range: 0 - 90DEG
 γ Interval: 0.5DEG
 Test System:EVERFINE GO-2000H_V1 SYSTEM V2.0.287
 Humidity:65.0%
 Test Distance:13.669m [K=1.0000]
 Remarks: DC 3.95V

WEC AND CCEC

Test:U:0V I:0A P:0W PF:0 Lamp Flux:91.3281x1 lm		
NAME: RXEL25	TYPE:	WEIGHT:
SPEC.:	DIM.:	SERIAL No.:2020030401
	SUR.:0.073	PROTECTION ANGLE:

ρ_{CC}	80%			70%			50%			30%			10%			0
ρ_w	50%	30%	10%	50%	30%	10%	50%	30%	10%	50%	30%	10%	50%	30%	10%	0
ρ_{fc}	20%			20%			20%			20%			20%			0
RCR	RCR:Room Cavity Ratio						Wall Exitance Coefficients(WEC)									
0.0																
1.0	.154	.087	.028	.147	.084	.027	.134	.077	.025	.123	.071	.023	.112	.065	.021	
2.0	.143	.078	.024	.138	.076	.023	.127	.071	.022	.118	.066	.021	.109	.062	.019	
3.0	.134	.071	.021	.129	.069	.021	.120	.065	.020	.112	.062	.019	.105	.058	.018	
4.0	.126	.065	.019	.122	.064	.019	.114	.061	.018	.108	.058	.017	.101	.055	.017	
5.0	.119	.060	.018	.115	.059	.017	.109	.057	.017	.103	.054	.016	.097	.052	.016	
6.0	.112	.056	.016	.109	.055	.016	.104	.053	.016	.099	.051	.015	.094	.049	.015	
7.0	.107	.053	.015	.104	.052	.015	.099	.050	.014	.095	.049	.014	.091	.047	.014	
8.0	.102	.050	.014	.100	.049	.014	.095	.048	.014	.091	.046	.013	.088	.045	.013	
9.0	.097	.047	.013	.095	.046	.013	.092	.045	.013	.088	.044	.013	.085	.043	.012	
10.0	.093	.045	.012	.091	.044	.012	.088	.043	.012	.085	.042	.012	.082	.041	.012	

ρ_{CC}	80%			70%			50%			30%			10%			0
ρ_w	50%	30%	10%	50%	30%	10%	50%	30%	10%	50%	30%	10%	50%	30%	10%	0
ρ_{fc}	20%			20%			20%			20%			20%			0
RCR	RCR:Room Cavity Ratio						Ceiling Cavity Exitance Coefficients(CCEC)									
0.0	.190	.190	.190	.163	.163	.163	.111	.111	.111	.064	.064	.064	.020	.020	.020	
1.0	.169	.158	.147	.145	.135	.126	.099	.093	.087	.057	.054	.051	.018	.017	.016	
2.0	.152	.133	.116	.131	.114	.100	.089	.079	.070	.052	.046	.041	.017	.015	.013	
3.0	.138	.113	.094	.119	.098	.081	.081	.068	.057	.047	.040	.034	.015	.013	.011	
4.0	.126	.098	.077	.108	.085	.067	.075	.059	.047	.043	.035	.028	.014	.011	.009	
5.0	.116	.086	.064	.100	.075	.055	.069	.052	.039	.040	.031	.023	.013	.010	.008	
6.0	.108	.076	.054	.093	.066	.047	.064	.046	.033	.037	.027	.020	.012	.009	.006	
7.0	.101	.068	.046	.087	.059	.040	.060	.042	.028	.035	.024	.017	.011	.008	.006	
8.0	.094	.062	.039	.081	.054	.034	.056	.038	.024	.033	.022	.015	.011	.007	.005	
9.0	.089	.056	.034	.077	.049	.030	.053	.034	.021	.031	.020	.013	.010	.007	.004	
10.0	.084	.052	.030	.072	.045	.026	.050	.032	.019	.029	.019	.011	.010	.006	.004	

C Range: 0 - 360DEG
 C Interval: 5.0DEG
 Test Speed: HIGH
 Temperature:25.3DEG
 Operators:WLM
 Test Date:2020-03-04

γ Range: 0 - 90DEG
 γ Interval: 0.5DEG
 Test System:EVERFINE GO-2000H_V1 SYSTEM V2.0.287
 Humidity:65.0%
 Test Distance:13.669m [K=1.0000]
 Remarks: DC 3.95V

UGR(Unified Glare Rating) Table

Test:U:0V I:0A P:0W PF:0 Lamp Flux:91.3281x1 lm										
NAME: RXEL25					TYPE:			WEIGHT:		
SPEC.:					DIM.:			SERIAL No.:2020030401		
					SUR.:0.073			PROTECTION ANGLE:		
ceiling/cavity	0.7	0.7	0.5	0.5	0.3	0.7	0.7	0.5	0.5	0.3
walls	0.5	0.3	0.5	0.3	0.3	0.5	0.3	0.5	0.3	0.3
working plane	0.2	0.2	0.2	0.2	0.2	0.2	0.2	0.2	0.2	0.2
Room dimensions	Viewed crosswise					Viewed endwise				
x = 2H y = 2H	2.9	3.6	3.1	3.8	3.9	4.5	5.3	4.8	5.4	5.6
3H	3.1	3.8	3.4	4.0	4.2	4.6	5.3	4.9	5.5	5.7
4H	3.3	3.9	3.6	4.2	4.4	4.7	5.4	5.0	5.6	5.8
6H	3.4	4.0	3.6	4.2	4.4	4.8	5.4	5.1	5.6	5.9
8H	3.3	3.9	3.6	4.2	4.4	4.8	5.4	5.1	5.7	6.0
12H	3.3	3.9	3.6	4.1	4.4	4.9	5.5	5.2	5.8	6.0
4H 2H	2.9	3.5	3.1	3.7	4.0	4.5	5.1	4.7	5.3	5.5
3H	3.3	3.8	3.6	4.1	4.4	4.6	5.2	4.9	5.4	5.7
4H	3.5	4.0	3.8	4.3	4.6	4.7	5.3	5.1	5.5	5.8
6H	3.7	4.2	4.1	4.5	4.8	4.9	5.4	5.3	5.7	6.1
8H	3.7	4.2	4.1	4.5	4.9	5.1	5.5	5.4	5.8	6.2
12H	3.7	4.1	4.1	4.5	4.9	5.2	5.6	5.6	6.0	6.4
8H 4H	3.5	3.9	3.9	4.3	4.6	4.7	5.1	5.1	5.5	5.8
6H	3.8	4.1	4.2	4.5	4.9	5.0	5.3	5.4	5.7	6.1
8H	3.9	4.2	4.3	4.6	5.0	5.2	5.5	5.7	6.0	6.4
12H	3.9	4.2	4.4	4.6	5.1	5.5	5.8	6.0	6.2	6.7
12H 4H	3.5	3.9	3.9	4.3	4.6	4.6	5.0	5.1	5.4	5.8
6H	3.8	4.1	4.2	4.5	5.0	5.0	5.3	5.4	5.7	6.1
8H	3.9	4.2	4.4	4.6	5.1	5.3	5.5	5.7	6.0	6.4
Variations with the observer position at spacings:										
S = 1.0H	+ 1.5 / - 1.5					+ 2.7 / - 2.9				
1.5H	+ 3.1 / - 1.3					+ 4.8 / - 2.8				
2.0H	+ 1.6 / - 1.7					+ 1.8 / - 1.0				

CIE Pub.117 Corrected 91.33 lm Total Lamp Luminous Flux. (8log(F/F0) = -8.3)

C Range: 0 - 360DEG
C Interval: 5.0DEG
Test Speed: HIGH
Temperature:25.3DEG
Operators:WLM
Test Date:2020-03-04

γ Range: 0 - 90DEG
 γ Interval: 0.5DEG
Test System:EVERFINE GO-2000H_V1 SYSTEM V2.0.287
Humidity:65.0%
Test Distance:13.669m [K=1.0000]
Remarks: DC 3.95V

UTILIZATION FACTORS TABLE

Test:U:0V I:0A P:0W PF:0 Lamp Flux:91.3281x1 lm		
NAME: RXEL25	TYPE:	WEIGHT:
SPEC.:	DIM.:	SERIAL No.:2020030401
	SUR.:0.073	PROTECTION ANGLE:

REFLECTANCE										
Ceiling	0.8	0.8	0.8	0.7	0.7	0.7	0.5	0.5	0.5	0
Walls	0.7	0.5	0.3	0.7	0.5	0.3	0.7	0.5	0.3	0
Working plane	0.2	0.2	0.2	0.2	0.2	0.2	0.2	0.2	0.2	0
ROOM INDEX	UTILIZATION FACTORS (PERCENT) $k(RI) \times RCR = 5$									
$k = 0.60$	89	83	79	88	83	79	88	82	79	76
0.80	96	90	87	95	90	87	94	90	86	83
1.00	100	95	91	99	94	91	98	94	90	87
1.25	104	99	96	103	98	95	101	97	94	90
1.50	106	102	99	105	101	98	103	100	97	93
2.00	109	105	102	108	104	101	105	102	100	94
2.50	111	107	104	109	106	103	106	103	101	95
3.00	112	109	106	110	107	105	107	105	103	96
4.00	114	111	109	112	110	108	108	107	105	98
5.00	115	113	111	113	111	110	109	108	107	99
ROOM INDEX	UF(total)									Direct
According to DIN EN 13032-2 2004			Suspended				SHRNOM = SHRNOM = 1.25			

C Range: 0 - 360DEG
C Interval: 5.0DEG
Test Speed: HIGH
Temperature:25.3DEG
Operators:WLM
Test Date:2020-03-04

γ Range: 0 - 90DEG
 γ Interval: 0.5DEG
Test System:EVERFINE GO-2000H_V1 SYSTEM V2.0.287
Humidity:65.0%
Test Distance:13.669m [K=1.0000]
Remarks: DC 3.95V

ISOCANDELA DIAGRAM

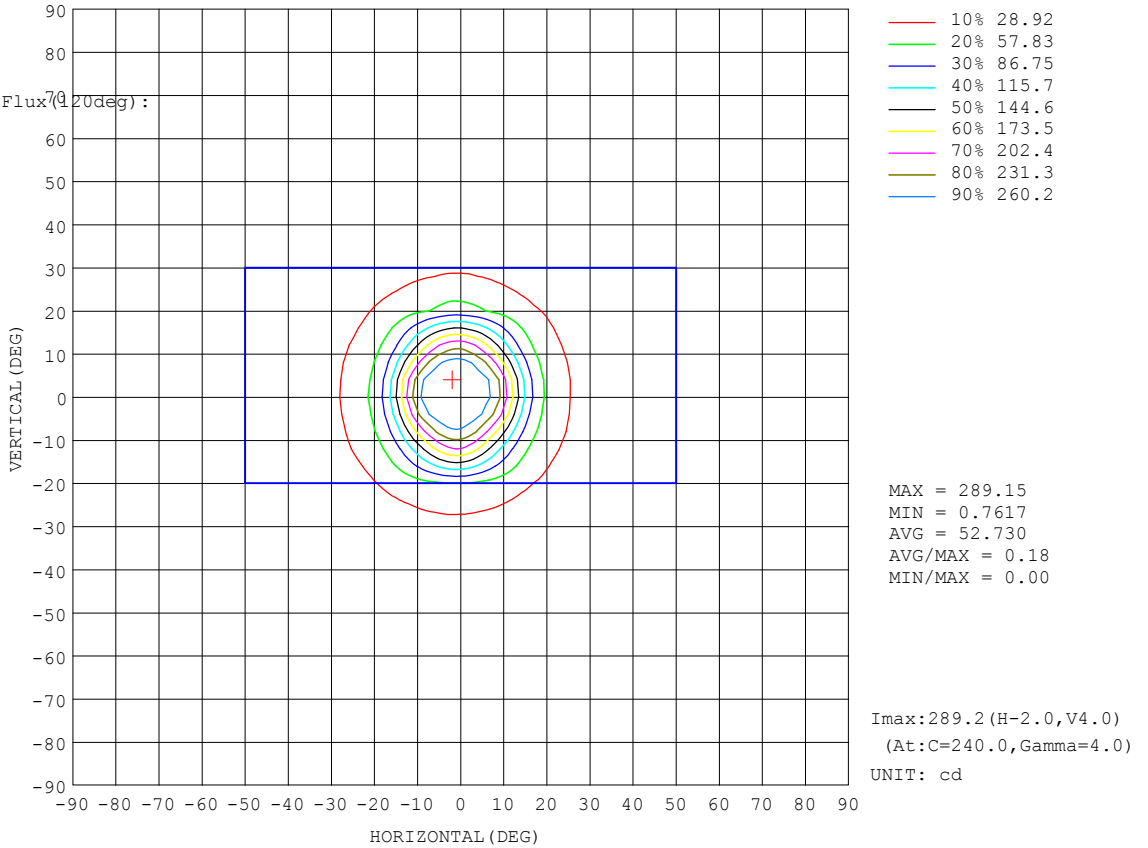
Test:U:0V I:0A P:0W PF:0 Lamp Flux:91.3281x1 lm		
NAME: RXEL25	TYPE:	WEIGHT:
SPEC.:	DIM.:	SERIAL No.:2020030401
	SUR.:0.073	PROTECTION ANGLE:

Conical surface Flux(90deg):

88.692 lm
 %lum = 97.1%
 %lamp = 97.1%

Conical surface Flux(70deg):

90.246 lm
 %lum = 98.8%
 %lamp = 98.8%

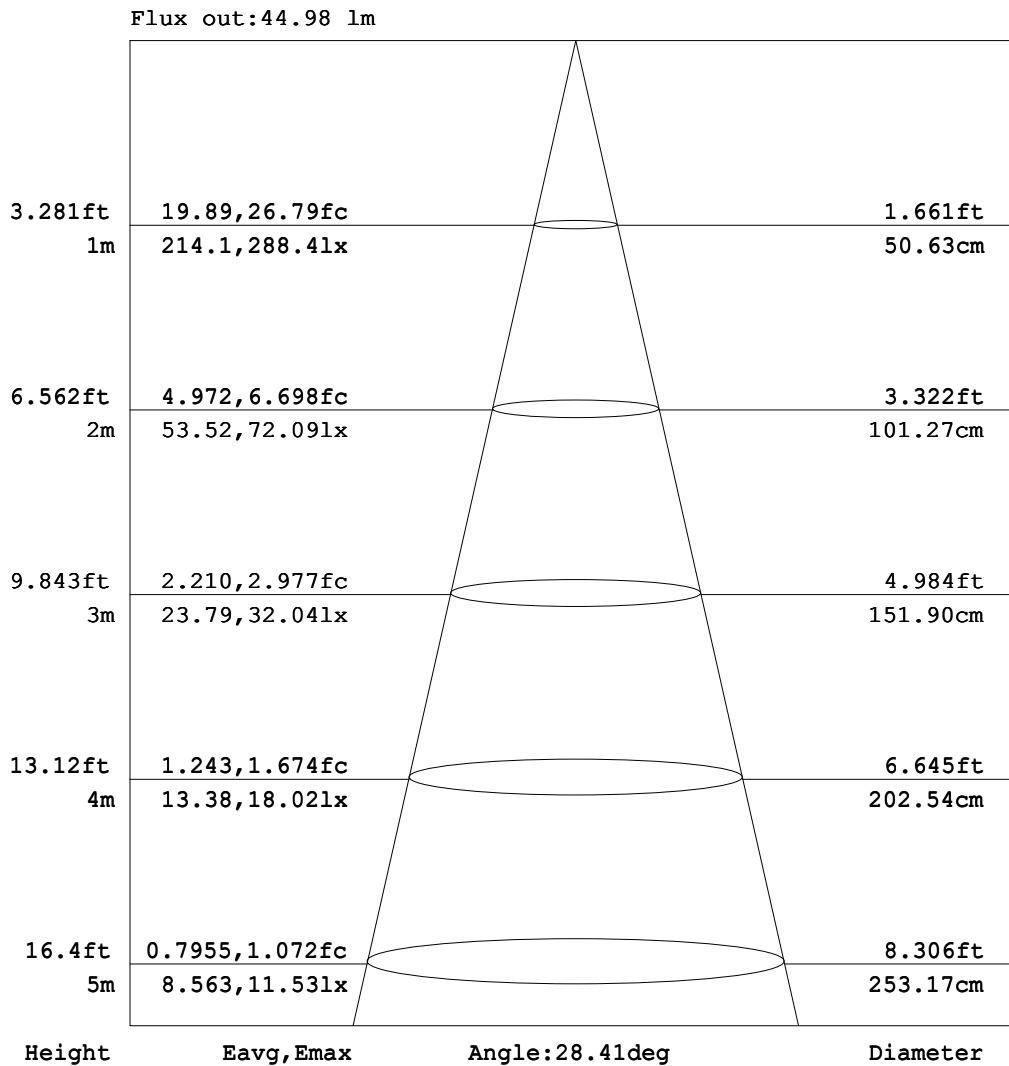


C Range: 0 - 360DEG
 C Interval: 5.0DEG
 Test Speed: HIGH
 Temperature:25.3DEG
 Operators:WLM
 Test Date:2020-03-04

γ Range: 0 - 90DEG
 γ Interval: 0.5DEG
 Test System:EVERFINE GO-2000H_V1 SYSTEM V2.0.287
 Humidity:65.0%
 Test Distance:13.669m [K=1.0000]
 Remarks: DC 3.95V

AAI Figure

Test:U:0V I:0A P:0W PF:0 Lamp Flux:91.3281x1 lm		
NAME: RXEL25	TYPE:	WEIGHT:
SPEC.:	DIM.:	SERIAL No.:2020030401
	SUR.:0.073	PROTECTION ANGLE:



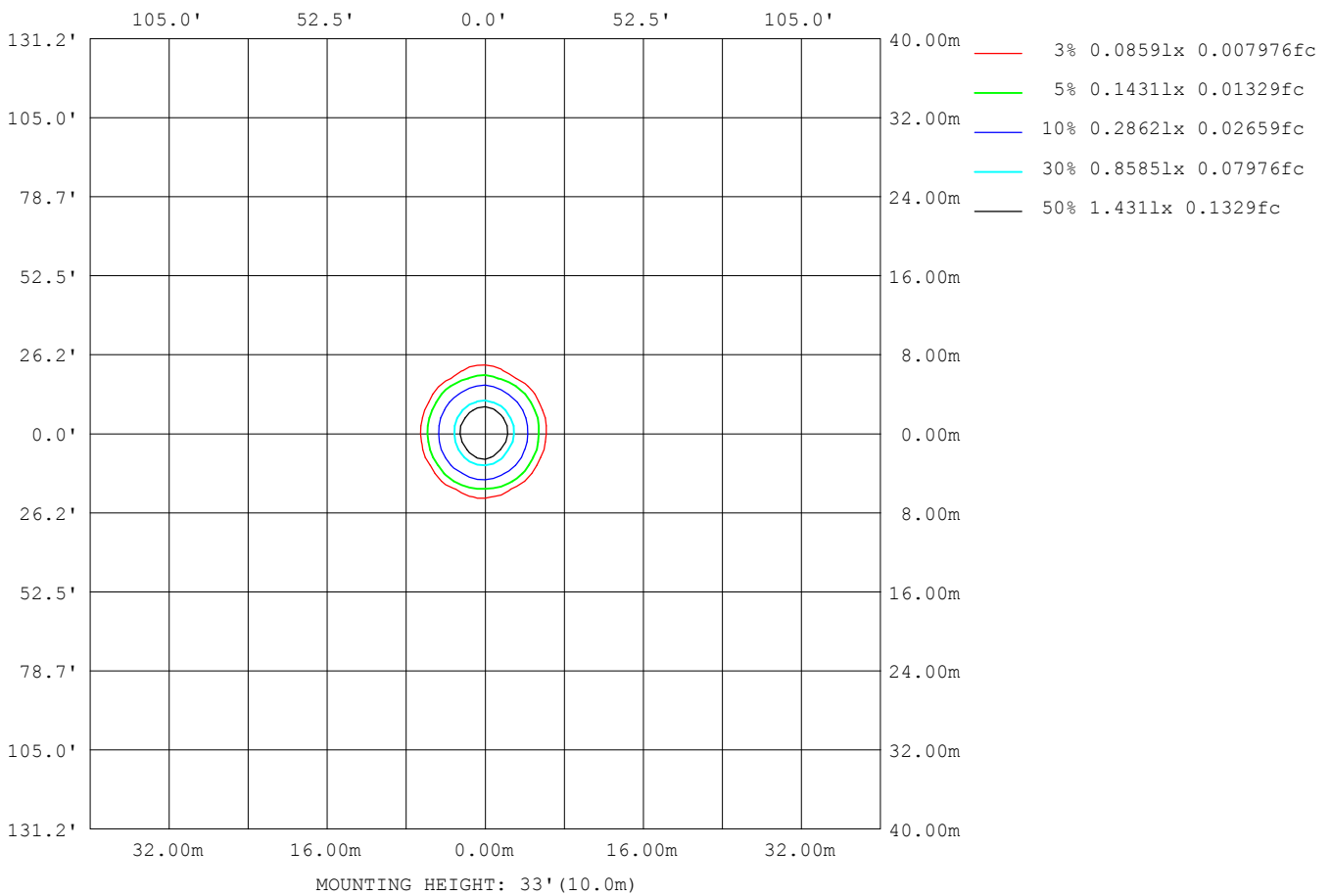
Note:The Curves indicate the illuminated area and the average illumination when the luminaire is at different distance.

C Range: 0 - 360DEG
 C Interval: 5.0DEG
 Test Speed: HIGH
 Temperature:25.3DEG
 Operators:WLM
 Test Date:2020-03-04

γ Range: 0 - 90DEG
 γ Interval: 0.5DEG
 Test System:EVERFINE GO-2000H_V1 SYSTEM V2.0.287
 Humidity:65.0%
 Test Distance:13.669m [K=1.0000]
 Remarks: DC 3.95V

ISOLUX DIAGRAM

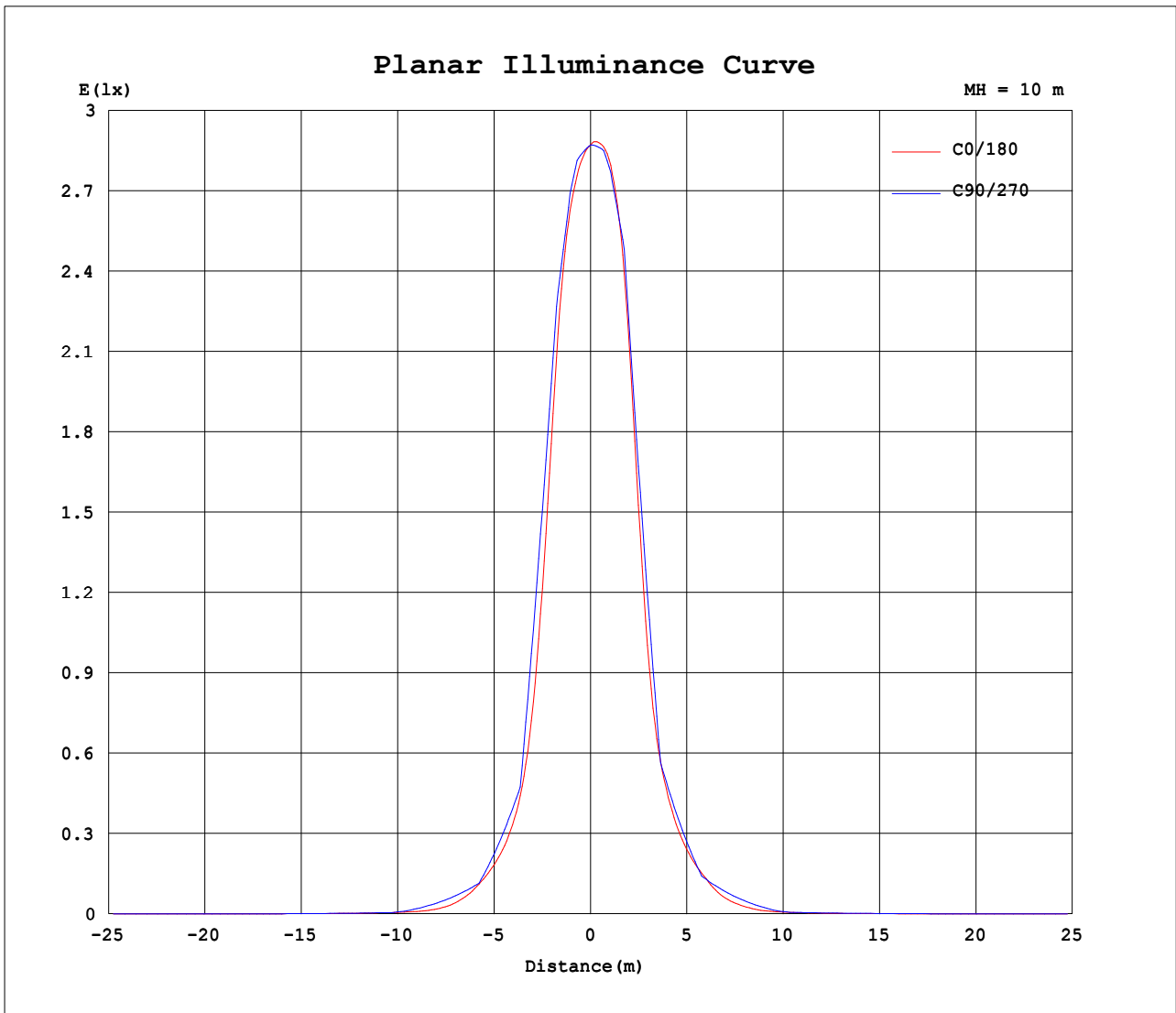
Test:U:0V I:0A P:0W PF:0 Lamp Flux:91.3281x1 lm		
NAME: RXEL25	TYPE:	WEIGHT:
SPEC.:	DIM.:	SERIAL No.:2020030401
	SUR.:0.073	PROTECTION ANGLE:



C Range: 0 - 360DEG
 C Interval: 5.0DEG
 Test Speed: HIGH
 Temperature:25.3DEG
 Operators:WLM
 Test Date:2020-03-04

γ Range: 0 - 90DEG
 γ Interval: 0.5DEG
 Test System:EVERFINE GO-2000H_V1 SYSTEM V2.0.287
 Humidity:65.0%
 Test Distance:13.669m [K=1.0000]
 Remarks: DC 3.95V

Planar Illuminance Curve



C Range: 0 - 360DEG
 C Interval: 5.0DEG
 Test Speed: HIGH
 Temperature:25.3DEG
 Operators:WLM
 Test Date:2020-03-04

γ Range: 0 - 90DEG
 γ Interval: 0.5DEG
 Test System:EVERFINE GO-2000H_V1 SYSTEM V2.0.287
 Humidity:65.0%
 Test Distance:13.669m [K=1.0000]
 Remarks: DC 3.95V

LUMINOUS DISTRIBUTION INTENSITY DATA

Test:U:0V I:0A P:0W PF:0 Lamp Flux:91.3281x1 lm		
NAME: RXEL25	TYPE:	WEIGHT:
SPEC.:	DIM.:	SERIAL No.:2020030401
	SUR.:0.073	PROTECTION ANGLE:

Table--1

UNIT: cd

C (DEG)\ γ (DEG)	0	5	10	15	20	25	30	35	40	45	50	55	60	65	70	75	80	85	90
0	287	287	287	287	287	287	287	287	287	287	287	287	287	287	287	287	287	287	287
5	273	271	270	269	269	269	269	269	270	271	272	273	274	274	275	276	277	277	278
10	217	213	209	207	207	207	205	205	204	203	203	205	208	212	217	223	229	234	237
15	114	110	109	109	108	109	108	108	108	111	115	119	123	128	132	137	141	144	147
20	53.3	52.3	52.3	52.6	52.9	53.3	53.7	54.8	56.5	58.5	60.9	62.7	63.2	62.9	61.7	59.7	58.1	57.2	57.1
25	30.3	30.2	30.5	30.7	31.2	31.2	31.1	31.4	32.1	32.5	32.1	32.1	32.8	33.5	34.4	35.1	35.7	36.8	37.5
30	17.3	16.9	16.8	16.9	17.0	16.7	16.7	17.1	17.7	18.1	18.5	18.5	18.5	18.6	18.3	18.3	17.7	17.7	17.8
35	7.74	7.48	7.46	7.56	7.39	7.36	7.30	7.51	7.90	8.39	8.11	7.48	8.37	9.51	10.5	11.3	11.8	12.2	12.4
40	3.08	2.87	2.98	3.03	3.05	3.04	3.10	3.28	3.27	3.00	3.57	4.25	5.04	5.69	6.27	6.58	6.85	6.95	7.06
45	1.74	1.66	1.77	1.70	1.67	1.72	1.76	1.74	1.80	1.89	2.03	2.31	2.57	2.70	2.58	2.34	2.29	2.22	2.19
50	1.22	1.15	1.20	1.13	1.15	1.17	1.19	1.19	1.19	1.21	1.17	1.11	1.14	1.18	1.23	1.27	1.28	1.31	1.31
55	0.86	0.79	0.82	0.76	0.82	0.84	0.85	0.81	0.78	0.75	0.77	0.81	0.84	0.90	0.92	0.93	0.92	0.93	0.93
60	0.68	0.63	0.59	0.59	0.65	0.61	0.59	0.56	0.57	0.59	0.63	0.64	0.65	0.66	0.63	0.60	0.57	0.55	0.55
65	0.50	0.51	0.42	0.51	0.46	0.41	0.42	0.45	0.46	0.49	0.50	0.49	0.49	0.46	0.45	0.44	0.44	0.43	0.43
70	0.39	0.35	0.34	0.35	0.29	0.31	0.34	0.37	0.38	0.35	0.34	0.32	0.31	0.30	0.30	0.32	0.32	0.31	0.32
75	0.28	0.20	0.28	0.19	0.24	0.27	0.27	0.25	0.22	0.19	0.19	0.20	0.21	0.22	0.24	0.25	0.25	0.25	0.26
80	0.16	0.09	0.07	0.18	0.19	0.15	0.15	0.15	0.15	0.15	0.16	0.17	0.19	0.19	0.20	0.21	0.19	0.19	0.19
85	0.04	0.02	0.09	0.04	0.07	0.09	0.12	0.13	0.13	0.12	0.13	0.14	0.16	0.17	0.17	0.16	0.14	0.13	0.13
90	0.02	0.08	0.09	0.09	0.09	0.10	0.10	0.11	0.11	0.10	0.11	0.11	0.14	0.14	0.14	0.12	0.08	0.06	0.06

C Range: 0 - 360DEG
C Interval: 5.0DEG
Test Speed: HIGH
Temperature:25.3DEG
Operators:WLM
Test Date:2020-03-04

γ Range: 0 - 90DEG
γ Interval: 0.5DEG
Test System:EVERFINE GO-2000H_V1 SYSTEM V2.0.287
Humidity:65.0%
Test Distance:13.669m [K=1.0000]
Remarks: DC 3.95V

LUMINOUS DISTRIBUTION INTENSITY DATA

Test:U:0V I:0A P:0W PF:0 Lamp Flux:91.3281x1 lm		
NAME: RXEL25	TYPE:	WEIGHT:
SPEC.:	DIM.:	SERIAL No.:2020030401
	SUR.:0.073	PROTECTION ANGLE:

Table--2

UNIT: cd

C (DEG) γ (DEG)	95	100	105	110	115	120	125	130	135	140	145	150	155	160	165	170	175	180	185
0	287	287	287	287	287	287	287	287	287	287	287	287	287	287	287	287	287	287	287
5	279	280	280	281	282	282	283	283	283	283	283	283	283	283	284	285	286	287	287
10	239	239	237	235	232	230	229	228	229	232	234	235	238	239	240	242	245	250	249
15	149	149	149	148	146	144	141	138	136	134	134	135	136	136	137	137	140	144	143
20	58.7	61.4	64.6	68.0	71.3	73.3	74.1	73.6	72.6	71.1	69.4	68.2	67.6	67.0	66.5	66.4	66.8	68.5	67.8
25	38.1	38.1	37.6	37.7	37.2	36.7	37.0	37.8	39.2	39.4	39.3	39.1	39.4	39.4	38.7	38.4	38.6	39.6	39.5
30	18.5	19.0	19.8	20.3	20.8	21.4	22.0	22.3	21.9	21.1	21.3	21.6	21.7	22.3	22.6	22.6	22.8	23.5	23.3
35	12.7	12.5	12.4	11.7	11.0	10.2	9.64	10.4	10.6	10.5	10.0	9.95	10.5	10.7	10.9	10.6	10.5	10.8	10.8
40	7.27	7.28	7.29	7.10	6.71	6.36	5.71	4.78	4.10	4.20	4.52	4.75	4.76	4.54	4.40	4.29	4.30	4.48	4.58
45	2.27	2.42	2.59	2.95	3.21	3.27	3.01	2.71	2.25	2.06	1.88	2.17	2.12	2.08	2.05	2.00	2.08	2.03	2.11
50	1.33	1.35	1.38	1.36	1.33	1.29	1.39	1.40	1.40	1.31	1.29	1.21	1.24	1.34	1.33	1.26	1.36	1.29	1.37
55	0.94	0.96	0.98	0.97	0.96	0.96	0.92	0.89	0.89	0.92	0.90	0.85	0.82	0.85	0.94	0.87	0.90	0.86	0.91
60	0.55	0.56	0.58	0.62	0.65	0.66	0.64	0.63	0.65	0.65	0.67	0.67	0.63	0.60	0.67	0.68	0.64	0.63	0.65
65	0.44	0.44	0.44	0.44	0.46	0.46	0.42	0.41	0.44	0.47	0.50	0.52	0.51	0.49	0.47	0.56	0.47	0.47	0.49
70	0.33	0.34	0.34	0.35	0.36	0.37	0.35	0.33	0.32	0.32	0.31	0.34	0.37	0.41	0.35	0.37	0.36	0.32	0.35
75	0.27	0.27	0.27	0.27	0.28	0.29	0.29	0.29	0.28	0.28	0.24	0.21	0.21	0.27	0.32	0.24	0.30	0.21	0.31
80	0.20	0.20	0.20	0.19	0.20	0.21	0.20	0.21	0.20	0.21	0.22	0.23	0.20	0.17	0.19	0.24	0.18	0.13	0.17
85	0.13	0.13	0.13	0.11	0.12	0.12	0.12	0.12	0.12	0.12	0.13	0.12	0.13	0.15	0.15	0.09	0.16	0.04	0.15
90	0.06	0.06	0.06	0.03	0.03	0.03	0.03	0.03	0.03	0.03	0.03	0.03	0.03	0.03	0.03	0.03	0.03	0.03	0.18

C Range: 0 - 360DEG γ Range: 0 - 90DEG
 C Interval: 5.0DEG γ Interval: 0.5DEG
 Test Speed: HIGH Test System:EVERFINE GO-2000H_V1 SYSTEM V2.0.287
 Temperature:25.3DEG Humidity:65.0%
 Operators:WLM Test Distance:13.669m [K=1.0000]
 Test Date:2020-03-04 Remarks: DC 3.95V

LUMINOUS DISTRIBUTION INTENSITY DATA

Test:U:0V I:0A P:0W PF:0 Lamp Flux:91.3281x1 lm		
NAME: RXEL25	TYPE:	WEIGHT:
SPEC.:	DIM.:	SERIAL No.:2020030401
	SUR.:0.073	PROTECTION ANGLE:

Table--3

UNIT: cd

C (DEG) γ (DEG)	190	195	200	205	210	215	220	225	230	235	240	245	250	255	260	265	270	275	280
0	287	287	287	287	287	287	287	287	287	287	287	287	287	287	287	287	287	287	287
5	287	287	287	287	287	288	288	288	288	288	288	287	287	286	286	285	284	284	283
10	249	249	251	253	252	252	249	248	247	248	250	252	254	257	259	260	260	256	252
15	144	149	150	152	150	149	149	152	155	158	161	163	165	165	165	165	164	161	158
20	68.5	69.5	70.2	70.8	71.9	74.1	76.6	79.3	81.7	82.9	82.2	79.7	76.7	73.9	71.5	69.7	68.1	67.3	68.1
25	40.0	40.4	40.8	41.0	41.2	41.8	42.4	42.6	41.4	40.9	41.5	42.2	42.6	43.4	44.6	45.4	45.0	43.9	42.5
30	23.5	23.6	23.8	23.5	23.6	24.0	24.4	25.0	25.0	24.6	24.3	24.2	24.1	23.5	22.8	22.2	21.8	21.8	21.8
35	11.0	11.2	11.1	11.0	10.8	11.3	12.1	12.5	12.0	11.2	12.0	13.0	14.2	15.0	15.2	15.3	15.2	14.9	14.4
40	4.65	4.76	4.79	4.70	4.89	4.92	4.65	4.37	5.64	6.58	7.42	7.93	8.45	8.82	8.76	8.68	8.59	8.47	8.24
45	2.09	2.11	2.25	2.30	2.30	2.10	2.35	2.56	2.90	3.56	3.76	3.73	3.45	3.06	2.84	2.67	2.59	2.63	2.69
50	1.28	1.32	1.34	1.28	1.27	1.36	1.46	1.56	1.56	1.53	1.49	1.57	1.60	1.66	1.64	1.61	1.60	1.61	1.57
55	0.88	0.95	0.87	0.84	0.90	0.97	1.00	0.98	0.98	1.05	1.15	1.19	1.23	1.27	1.27	1.24	1.24	1.25	1.24
60	0.69	0.68	0.61	0.65	0.70	0.72	0.76	0.77	0.77	0.81	0.84	0.86	0.89	0.88	0.89	0.88	0.88	0.89	0.90
65	0.54	0.48	0.50	0.54	0.55	0.55	0.57	0.59	0.58	0.60	0.64	0.68	0.70	0.72	0.73	0.73	0.73	0.73	0.74
70	0.37	0.36	0.43	0.41	0.40	0.38	0.43	0.50	0.53	0.57	0.61	0.61	0.61	0.60	0.60	0.59	0.59	0.58	0.59
75	0.23	0.32	0.29	0.26	0.30	0.36	0.42	0.48	0.50	0.52	0.53	0.52	0.51	0.50	0.49	0.49	0.49	0.48	0.48
80	0.25	0.19	0.21	0.29	0.34	0.36	0.37	0.38	0.39	0.40	0.41	0.41	0.40	0.39	0.39	0.39	0.39	0.38	0.38
85	0.16	0.25	0.25	0.26	0.26	0.27	0.27	0.28	0.29	0.29	0.30	0.29	0.29	0.29	0.29	0.28	0.28	0.28	0.28
90	0.18	0.18	0.18	0.18	0.18	0.18	0.18	0.18	0.18	0.18	0.18	0.18	0.18	0.18	0.18	0.18	0.18	0.18	0.18

C Range: 0 - 360DEG γ Range: 0 - 90DEG
C Interval: 5.0DEG γ Interval: 0.5DEG
Test Speed: HIGH Test System:EVERFINE GO-2000H_V1 SYSTEM V2.0.287
Temperature:25.3DEG Humidity:65.0%
Operators:WLM Test Distance:13.669m [K=1.0000]
Test Date:2020-03-04 Remarks: DC 3.95V

LUMINOUS DISTRIBUTION INTENSITY DATA

Test:U:0V I:0A P:0W PF:0 Lamp Flux:91.3281x1 lm		
NAME: RXEL25	TYPE:	WEIGHT:
SPEC.:	DIM.:	SERIAL No.:2020030401
	SUR.:0.073	PROTECTION ANGLE:

Table--4

UNIT: cd

γ (DEG)	C (DEG)																		
	285	290	295	300	305	310	315	320	325	330	335	340	345	350	355				
0	287	287	287	287	287	287	287	287	287	287	287	287	287	287	287				
5	283	282	281	281	281	280	279	278	276	275	274	274	273	273	273				
10	247	242	237	233	230	228	227	228	228	227	226	223	219	217	217				
15	156	153	149	145	140	136	130	126	125	124	124	122	120	116	114				
20	69.7	71.0	72.3	72.8	71.9	69.7	66.6	63.5	60.8	58.5	57.5	56.8	55.9	54.7	53.4				
25	40.8	39.1	37.8	36.7	35.8	35.5	35.8	35.4	34.4	33.4	32.7	32.1	31.6	31.2	30.6				
30	21.6	21.4	21.2	21.3	21.3	21.3	20.9	20.7	19.9	19.1	18.8	18.8	18.3	17.8	17.5				
35	13.4	12.4	11.4	10.8	9.54	9.83	10.2	10.00	9.54	8.79	8.31	8.29	8.45	8.46	8.18				
40	7.83	7.33	7.15	6.41	5.30	4.35	3.48	3.81	3.76	3.30	3.16	3.41	3.43	3.30	3.14				
45	2.76	3.06	3.33	3.14	2.80	2.36	2.13	1.95	1.81	1.82	1.77	1.69	1.69	1.76	1.67				
50	1.53	1.50	1.41	1.33	1.32	1.35	1.33	1.27	1.23	1.23	1.19	1.14	1.14	1.20	1.14				
55	1.22	1.21	1.15	1.08	0.99	0.92	0.86	0.86	0.88	0.87	0.89	0.82	0.76	0.82	0.80				
60	0.93	0.95	0.96	0.91	0.86	0.79	0.74	0.66	0.60	0.63	0.63	0.67	0.60	0.59	0.63				
65	0.74	0.76	0.78	0.76	0.75	0.71	0.66	0.59	0.54	0.47	0.44	0.48	0.49	0.41	0.51				
70	0.58	0.59	0.59	0.59	0.59	0.57	0.55	0.54	0.49	0.43	0.35	0.32	0.35	0.35	0.36				
75	0.47	0.47	0.47	0.47	0.46	0.43	0.41	0.39	0.39	0.39	0.36	0.28	0.20	0.27	0.20				
80	0.38	0.38	0.37	0.37	0.37	0.34	0.31	0.31	0.29	0.27	0.26	0.29	0.24	0.16	0.17				
85	0.28	0.28	0.28	0.28	0.27	0.27	0.25	0.24	0.24	0.22	0.21	0.19	0.15	0.17	0.04				
90	0.18	0.18	0.18	0.18	0.18	0.18	0.18	0.18	0.18	0.18	0.18	0.18	0.18	0.18	0.19				

C Range: 0 - 360DEG	γ Range: 0 - 90DEG
C Interval: 5.0DEG	γ Interval: 0.5DEG
Test Speed: HIGH	Test System:EVERFINE GO-2000H_V1 SYSTEM V2.0.287
Temperature:25.3DEG	Humidity:65.0%
Operators:WLM	Test Distance:13.669m [K=1.0000]
Test Date:2020-03-04	Remarks: DC 3.95V