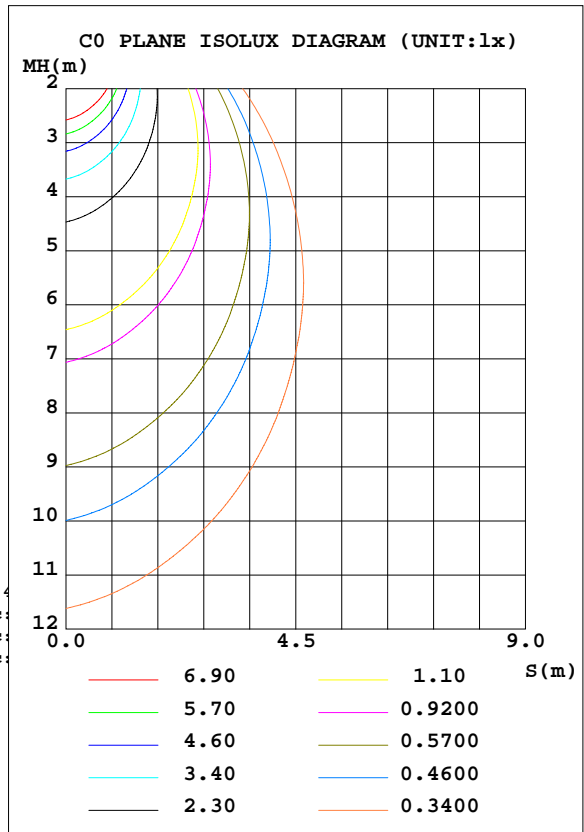
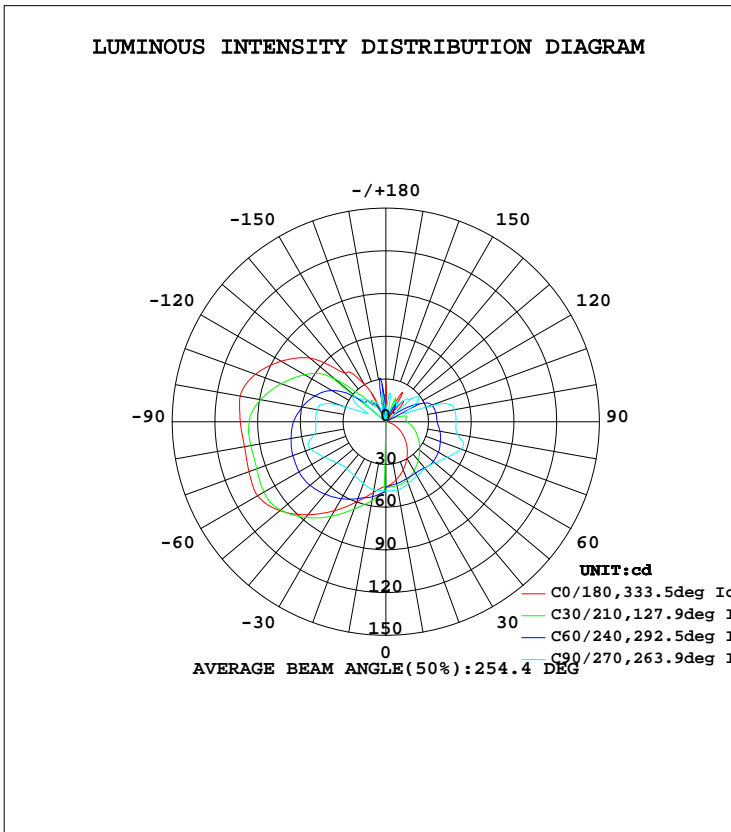


**LUMINAIRE PHOTOMETRIC TEST REPORT**

Test:U:120.5V I:0.0706A P:7.941W PF:0.9344 Lamp Flux:549.561x1 lm		
NAME:	TYPE:LED	WEIGHT:
SPEC.:	DIM.:	SERIAL No.:
MFR.:	SUR.:	PROTECTION ANGLE:

DATA OF LAMP		PHOTOMETRIC DATA			
MODEL	4407BK-E26	Imax(cd)	104.2	S/MH(C0/180)	2.60
NOMINAL POWER(W)	9	LOR(%)	100.0	S/MH(C90/270)	1.37
RATED VOLTAGE(V)	120	TOTAL FLUX(lm)	549.56	η UP, DN(C0-180)	17.0,29.5
NOMINAL FLUX(lm)	549.561	CIE CLASS	SEMI-D.	η UP, DN(C180-360)	20.3,33.2
LAMPS INSIDE	1	η up(%)	37.3	CIBSE SHR NOM	1.75
TEST VOLTAGE(V)	120	η down(%)	62.7	CIBSE SHR MAX	1.75



C Range: 0 - 360DEG  
 C Interval: 15.0DEG  
 Test Speed: HIGH  
 Temperature:25.3DEG  
 Operators:  
 Test Date:2023-10-10

γ Range: 0 - 180DEG  
 γ Interval: 1.0DEG  
 Test System:EVERFINE GO-2000A\_V1 SYSTEM V2.0.291  
 Humidity:65.0%  
 Test Distance:7.500m [K=1.0000]  
 Remarks:

ZONAL FLUX DIAGRAM

ZONAL FLUX DIAGRAM:

γ	C0	C45	C90	C135	C180	C225	C270	C315	γ	Φ zone	Φ total	lum, lamp
10	41.46	44.68	48.45	54.79	50.41	54.79	48.45	44.68	0- 10	4.608	4.608	0.84,0.84
20	35.82	43.19	46.19	61.69	59.88	61.69	46.19	43.19	10- 20	14.12	18.73	3.41,3.41
30	29.49	40.79	43.84	70.37	72.03	70.37	43.84	40.79	20- 30	23.86	42.58	7.75,7.75
40	23.26	38.79	42.81	77.97	85.22	77.97	42.81	38.79	30- 40	33.77	76.36	13.9,13.9
50	16.75	37.17	44.97	83.54	97.14	83.54	44.97	37.17	40- 50	43.42	119.8	21.8,21.8
60	10.86	34.35	49.81	85.62	104.0	85.62	49.81	34.35	50- 60	51.86	171.6	31.2,31.2
70	5.624	31.10	56.19	84.18	102.4	84.18	56.19	31.10	60- 70	56.88	228.5	41.6,41.6
80	2.215	28.18	51.03	82.47	100.8	82.47	51.03	28.18	70- 80	58.42	286.9	52.2,52.2
90	2.972	24.88	49.28	79.63	102.3	79.63	49.28	24.88	80- 90	57.66	344.6	62.7,62.7
100	2.011	24.68	49.06	74.29	103.9	74.29	49.06	24.68	90-100	55.91	400.5	72.9,72.9
110	1.807	24.14	31.43	65.70	97.53	65.70	31.43	24.14	100-110	51.21	451.7	82.2,82.2
120	2.377	16.23	22.00	55.02	85.02	55.02	22.00	16.23	110-120	39.67	491.4	89.4,89.4
130	7.394	4.818	27.02	29.64	69.64	29.64	27.02	4.818	120-130	27.49	518.9	94.4,94.4
140	19.21	7.234	19.60	12.28	44.66	12.28	19.60	7.234	130-140	15.40	534.3	97.2,97.2
150	23.57	6.593	15.39	3.692	30.82	3.692	15.39	6.593	140-150	8.894	543.2	98.8,98.8
160	1.772	2.052	2.677	1.579	3.213	1.579	2.677	2.052	150-160	4.184	547.4	99.6,99.6
170	1.772	2.027	18.20	16.56	5.872	16.56	18.20	2.027	160-170	1.104	548.5	99.8,99.8
180	29.04	8.927	2.172	3.069	9.640	3.069	2.172	8.927	170-180	1.106	549.6	100,100
DEG	LUMINOUS INTENSITY:cd									UNIT:lm		

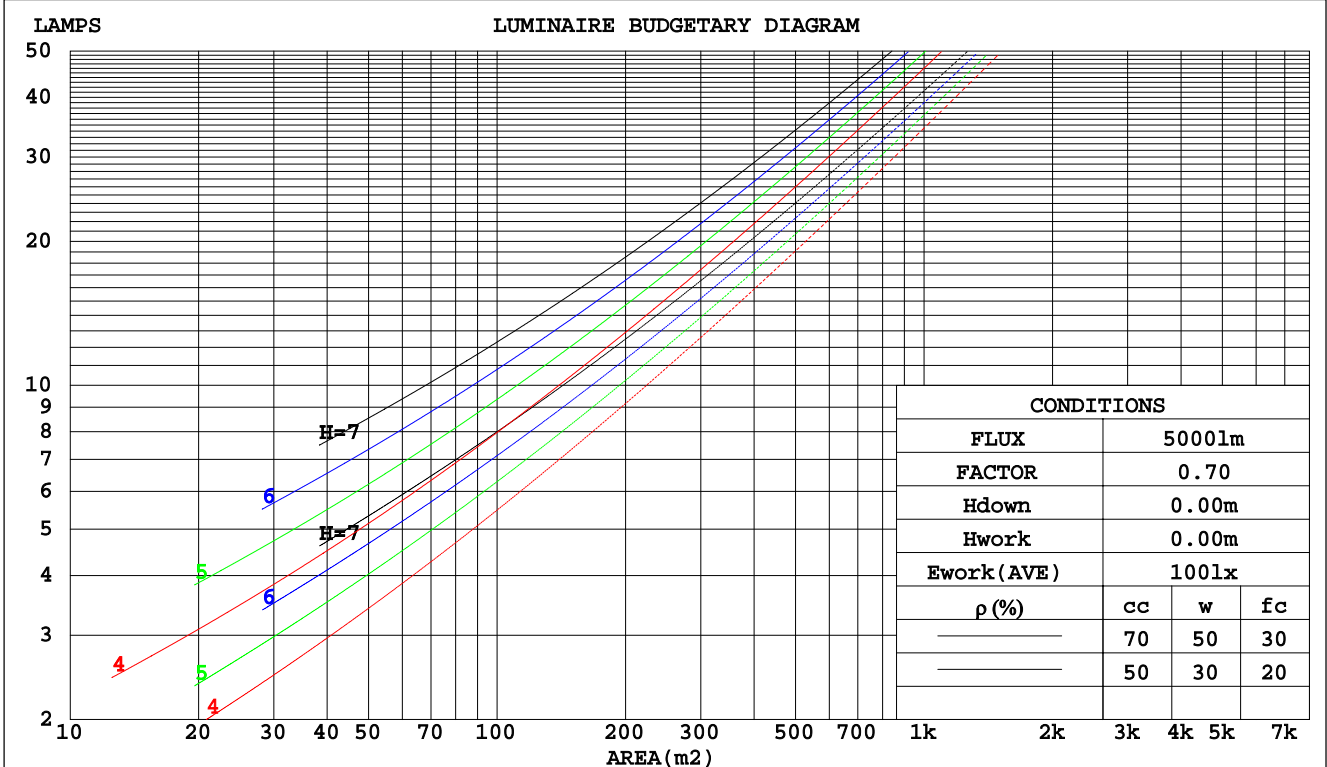
C Range: 0 - 360DEG  
 C Interval: 15.0DEG  
 Test Speed: HIGH  
 Temperature:25.3DEG  
 Operators:  
 Test Date:2023-10-10

γ Range: 0 - 180DEG  
 γ Interval: 1.0DEG  
 Test System:EVERFINE GO-2000A\_V1 SYSTEM V2.0.291  
 Humidity:65.0%  
 Test Distance:7.500m [K=1.0000]  
 Remarks:

CU AND LUMINAIRE BUDGETARY ESTIMATE DIAGRAM

Test:U:120.5V I:0.0706A P:7.941W PF:0.9344 Lamp Flux:549.561x1 lm		
NAME:	TYPE:LED	WEIGHT:
SPEC.:	DIM.:	SERIAL No.:
MFR.:	SUR.:	PROTECTION ANGLE:

pcc	80%			70%			50%			30%			10%			0
	50%	30%	10%	50%	30%	10%	50%	30%	10%	50%	30%	10%	50%	30%	10%	0
pw																
pfc	20%			20%			20%			20%			20%			0
RCR	RCR:Room Cavity Ratio						Coefficients of Utilization(CU)									
0.0	1.10	1.10	1.10	1.03	1.03	1.03	.90	.90	.90	.79	.79	.79	.68	.68	.68	.63
1.0	.89	.83	.77	.83	.77	.73	.72	.67	.64	.61	.58	.55	.52	.49	.47	.42
2.0	.75	.66	.59	.69	.62	.56	.60	.54	.49	.51	.46	.42	.43	.39	.36	.31
3.0	.64	.55	.47	.60	.51	.44	.51	.44	.39	.43	.38	.33	.36	.32	.28	.24
4.0	.56	.46	.38	.52	.43	.36	.44	.37	.32	.38	.32	.27	.31	.27	.23	.19
5.0	.49	.39	.32	.46	.37	.30	.39	.32	.26	.33	.27	.23	.28	.23	.19	.16
6.0	.44	.34	.27	.41	.32	.26	.35	.28	.22	.30	.24	.19	.25	.20	.16	.13
7.0	.39	.30	.23	.36	.28	.22	.31	.24	.19	.27	.21	.17	.22	.18	.14	.11
8.0	.35	.26	.20	.33	.25	.19	.28	.22	.17	.24	.19	.15	.20	.16	.12	.10
9.0	.32	.24	.18	.30	.22	.17	.26	.19	.15	.22	.17	.13	.19	.14	.11	.09
10.0	.29	.21	.16	.27	.20	.15	.24	.18	.13	.21	.15	.11	.17	.13	.10	.08



C Range: 0 - 360DEG  
 C Interval: 15.0DEG  
 Test Speed: HIGH  
 Temperature: 25.3DEG  
 Operators:  
 Test Date: 2023-10-10

γ Range: 0 - 180DEG  
 γ Interval: 1.0DEG  
 Test System: EVERFINE GO-2000A\_V1 SYSTEM V2.0.291  
 Humidity: 65.0%  
 Test Distance: 7.500m [K=1.0000]  
 Remarks:

WEC AND CCEC

Test:U:120.5V I:0.0706A P:7.941W PF:0.9344 Lamp Flux:549.561x1 lm														
NAME:					TYPE:LED					WEIGHT:				
SPEC.:					DIM.:					SERIAL No.:				
MFR.:					SUR.:					PROTECTION ANGLE:				

ρcc	80%			70%			50%			30%			10%			0
ρw	50%	30%	10%	50%	30%	10%	50%	30%	10%	50%	30%	10%	50%	30%	10%	0
ρfc	20%			20%			20%			20%			20%			0
RCR	RCR:Room Cavity Ratio						Wall Exitance Coefficients(WEC)									
0.0																
1.0	.428	.243	.077	.410	.234	.074	.375	.215	.069	.342	.197	.063	.313	.181	.058	
2.0	.357	.195	.060	.340	.187	.058	.308	.171	.053	.278	.156	.049	.251	.142	.045	
3.0	.310	.165	.049	.295	.158	.048	.266	.144	.044	.239	.131	.040	.214	.118	.037	
4.0	.276	.143	.042	.262	.137	.040	.235	.125	.037	.210	.113	.034	.187	.102	.031	
5.0	.248	.126	.037	.235	.121	.035	.211	.110	.032	.188	.099	.030	.167	.089	.027	
6.0	.226	.113	.032	.214	.108	.031	.192	.098	.029	.171	.089	.026	.151	.080	.024	
7.0	.207	.102	.029	.196	.098	.028	.176	.089	.026	.156	.080	.023	.138	.072	.021	
8.0	.191	.093	.026	.181	.089	.025	.162	.081	.023	.144	.073	.021	.127	.065	.019	
9.0	.178	.086	.024	.168	.082	.023	.150	.074	.021	.134	.067	.019	.118	.060	.017	
10.0	.166	.079	.022	.157	.076	.021	.140	.069	.019	.125	.062	.018	.110	.055	.016	

ρcc	80%			70%			50%			30%			10%			0
ρw	50%	30%	10%	50%	30%	10%	50%	30%	10%	50%	30%	10%	50%	30%	10%	0
ρfc	20%			20%			20%			20%			20%			0
RCR	RCR:Room Cavity Ratio						Ceiling Cavity Exitance Coefficients(CCEC)									
0.0	.475	.475	.475	.406	.406	.406	.277	.277	.277	.159	.159	.159	.051	.051	.051	
1.0	.475	.442	.412	.406	.379	.354	.278	.261	.245	.160	.151	.142	.051	.049	.046	
2.0	.469	.420	.379	.402	.362	.327	.275	.250	.228	.159	.146	.134	.051	.047	.044	
3.0	.462	.405	.359	.396	.349	.311	.272	.242	.218	.157	.142	.129	.050	.046	.042	
4.0	.455	.393	.346	.390	.339	.300	.268	.237	.211	.155	.139	.125	.050	.045	.041	
5.0	.447	.384	.337	.384	.332	.293	.264	.232	.207	.153	.136	.123	.049	.044	.040	
6.0	.440	.376	.331	.378	.326	.288	.261	.228	.204	.151	.134	.121	.049	.044	.040	
7.0	.432	.370	.326	.372	.321	.284	.257	.225	.201	.149	.132	.120	.048	.043	.040	
8.0	.426	.364	.322	.366	.316	.281	.254	.222	.199	.148	.131	.119	.048	.043	.039	
9.0	.419	.360	.320	.361	.312	.279	.250	.220	.198	.146	.130	.118	.047	.043	.039	
10.0	.414	.356	.318	.356	.309	.277	.247	.217	.197	.144	.129	.117	.047	.042	.039	

C Range: 0 - 360DEG  
 C Interval: 15.0DEG  
 Test Speed: HIGH  
 Temperature:25.3DEG  
 Operators:  
 Test Date:2023-10-10

γ Range: 0 - 180DEG  
 γ Interval: 1.0DEG  
 Test System:EVERFINE GO-2000A\_V1 SYSTEM V2.0.291  
 Humidity:65.0%  
 Test Distance:7.500m [K=1.0000]  
 Remarks:

UGR(Unified Glare Rating) Table

Test:U:120.5V I:0.0706A P:7.941W PF:0.9344 Lamp Flux:549.561x1 lm										
NAME:					TYPE:LED			WEIGHT:		
SPEC.:					DIM.:			SERIAL No.:		
MFR.:					SUR.:			PROTECTION ANGLE:		
ceiling/cavity	0.7	0.7	0.5	0.5	0.3	0.7	0.7	0.5	0.5	0.3
walls	0.5	0.3	0.5	0.3	0.3	0.5	0.3	0.5	0.3	0.3
working plane	0.2	0.2	0.2	0.2	0.2	0.2	0.2	0.2	0.2	0.2
Room dimensions	Viewed crosswise					Viewed endwise				
x = 2H y = 2H	4.5	5.7	5.2	6.5	7.4	9.3	10.5	10.1	11.3	12.2
3H	5.8	6.9	6.6	7.7	8.7	12.9	14.0	13.7	14.8	15.8
4H	6.3	7.3	7.1	8.1	9.1	14.9	16.0	15.7	16.8	17.8
6H	6.6	7.6	7.4	8.4	9.4	16.9	17.9	17.7	18.7	19.7
8H	6.7	7.7	7.5	8.5	9.5	18.0	18.9	18.8	19.8	20.8
12H	6.8	7.8	7.6	8.6	9.6	19.2	20.1	20.0	21.0	22.0
4H 2H	6.5	7.5	7.2	8.3	9.3	9.7	10.8	10.5	11.6	12.6
3H	8.2	9.1	9.0	9.9	11.0	13.5	14.4	14.3	15.3	16.3
4H	9.0	9.8	9.8	10.7	11.7	15.7	16.5	16.5	17.4	18.4
6H	9.6	10.4	10.4	11.2	12.3	18.0	18.7	18.8	19.6	20.7
8H	9.8	10.5	10.7	11.4	12.5	19.2	19.9	20.1	20.8	21.9
12H	10.0	10.7	10.9	11.5	12.7	20.6	21.3	21.5	22.2	23.3
8H 4H	10.9	11.6	11.8	12.5	13.6	15.8	16.6	16.7	17.5	18.6
6H	12.0	12.6	12.9	13.5	14.7	18.4	19.1	19.3	20.0	21.1
8H	12.5	13.0	13.4	14.0	15.1	19.9	20.5	20.8	21.4	22.6
12H	12.9	13.3	13.8	14.3	15.4	21.7	22.2	22.6	23.1	24.3
12H 4H	11.6	12.3	12.5	13.2	14.3	15.8	16.5	16.7	17.4	18.5
6H	13.0	13.6	13.9	14.5	15.6	18.5	19.1	19.4	20.0	21.1
8H	13.7	14.2	14.6	15.1	16.3	20.1	20.6	21.0	21.5	22.7
Variations with the observer position at spacings:										
S = 1.0H	+ 0.1 / - 0.1					+ 0.1 / - 0.1				
1.5H	+ 0.2 / - 0.2					+ 0.2 / - 0.3				
2.0H	+ 0.3 / - 0.4					+ 0.3 / - 0.3				

CIE Pub.117 Corrected 549.6 lm Total Lamp Luminous Flux. (8log(F/F0) = -2.1)

C Range: 0 - 360DEG  
 C Interval: 15.0DEG  
 Test Speed: HIGH  
 Temperature:25.3DEG  
 Operators:  
 Test Date:2023-10-10

γ Range: 0 - 180DEG  
 γ Interval: 1.0DEG  
 Test System:EVERFINE GO-2000A\_V1 SYSTEM V2.0.291  
 Humidity:65.0%  
 Test Distance:7.500m [K=1.0000]  
 Remarks:

UTILIZATION FACTORS TABLE

Test:U:120.5V I:0.0706A P:7.941W PF:0.9344 Lamp Flux:549.561x1 lm		
NAME:	TYPE:LED	WEIGHT:
SPEC.:	DIM.:	SERIAL No.:
MFR.:	SUR.:	PROTECTION ANGLE:

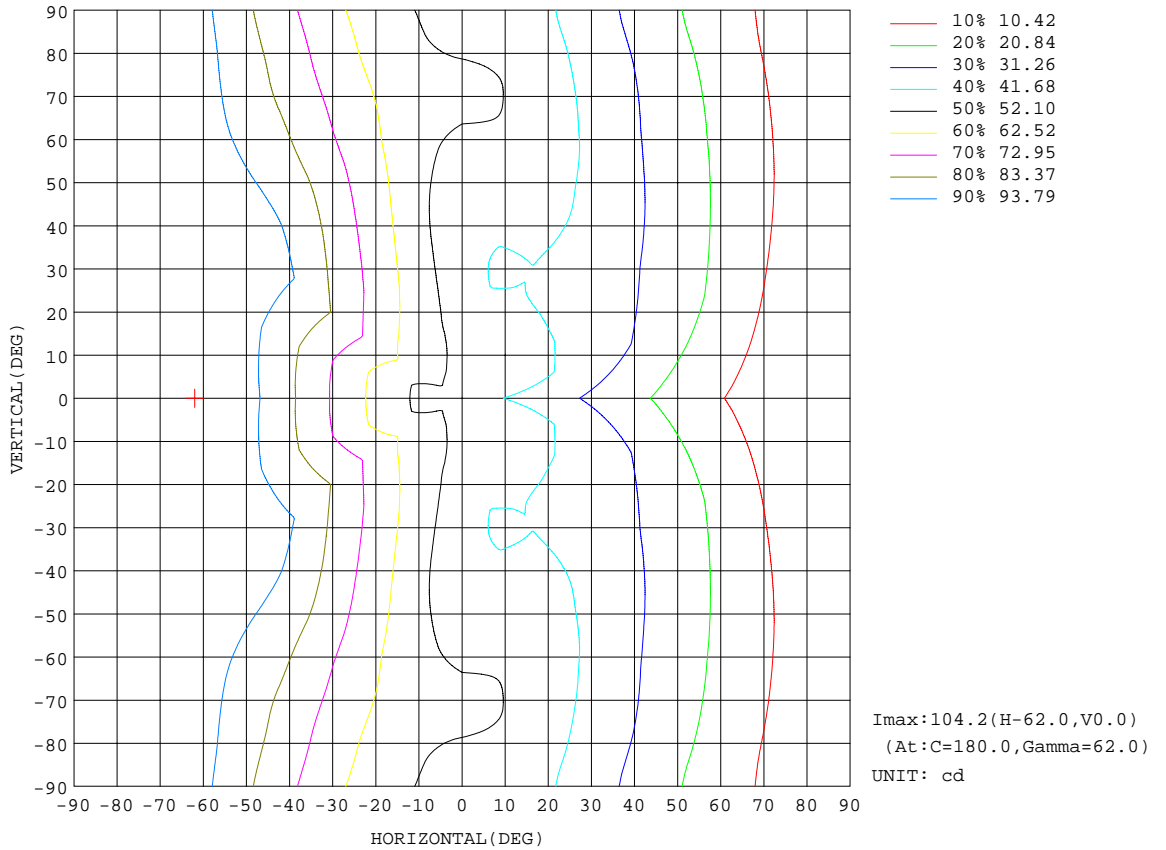
REFLECTANCE										
Ceiling	0.8	0.8	0.8	0.7	0.7	0.7	0.5	0.5	0.5	0
Walls	0.7	0.5	0.3	0.7	0.5	0.3	0.7	0.5	0.3	0
Working plane	0.2	0.2	0.2	0.2	0.2	0.2	0.2	0.2	0.2	0
ROOM INDEX	UTILIZATION FACTORS(PERCENT) $k(RI) \times RCR = 5$									
k = 0.60	38	25	18	37	25	18	34	23	17	10
0.80	47	33	24	45	32	24	41	30	22	14
1.00	54	40	31	52	38	30	47	38	28	17
1.25	61	47	37	58	45	36	52	41	33	21
1.50	66	52	43	63	50	41	56	45	38	24
2.00	74	61	51	70	58	49	62	52	45	29
2.50	79	67	58	74	64	55	66	57	50	33
3.00	83	72	63	78	68	60	69	61	54	36
4.00	89	79	71	83	75	67	73	66	60	40
5.00	92	84	76	86	79	72	76	70	64	43
ROOM INDEX	UF(total)									Direct
According to DIN EN 13032-2 2004			Suspended				SHRNOM = 1.25			

C Range: 0 - 360DEG  
 C Interval: 15.0DEG  
 Test Speed: HIGH  
 Temperature:25.3DEG  
 Operators:  
 Test Date:2023-10-10

$\gamma$  Range: 0 - 180DEG  
 $\gamma$  Interval: 1.0DEG  
 Test System:EVERFINE GO-2000A\_V1 SYSTEM V2.0.291  
 Humidity:65.0%  
 Test Distance:7.500m [K=1.0000]  
 Remarks:

ISOCANDELA DIAGRAM

Test:U:120.5V I:0.0706A P:7.941W PF:0.9344 Lamp Flux:549.561x1 lm		
NAME:	TYPE:LED	WEIGHT:
SPEC.:	DIM.:	SERIAL No.:
MFR.:	SUR.:	PROTECTION ANGLE:



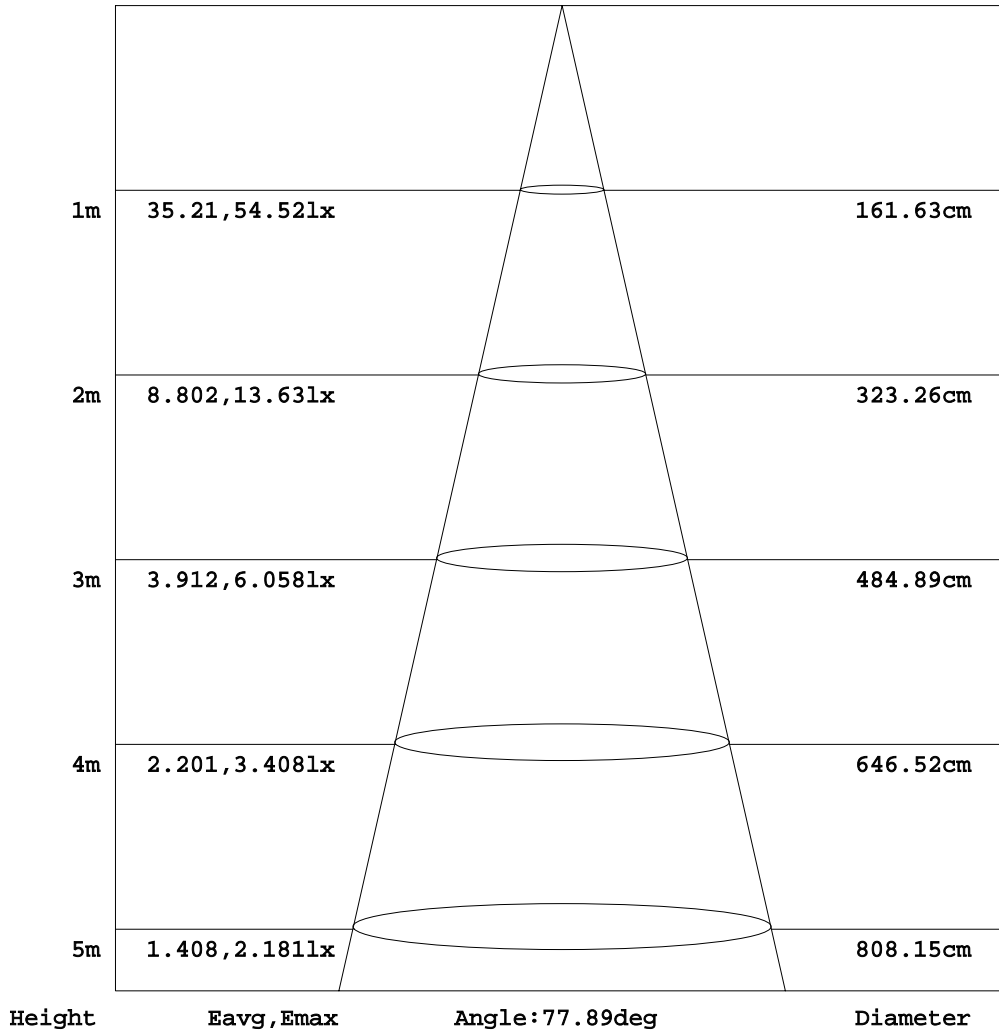
C Range: 0 - 360DEG  
 C Interval: 15.0DEG  
 Test Speed: HIGH  
 Temperature:25.3DEG  
 Operators:  
 Test Date:2023-10-10

γ Range: 0 - 180DEG  
 γ Interval: 1.0DEG  
 Test System:EVERFINE GO-2000A\_V1 SYSTEM V2.0.291  
 Humidity:65.0%  
 Test Distance:7.500m [K=1.0000]  
 Remarks:

AAI Figure

Test:U:120.5V I:0.0706A P:7.941W PF:0.9344 Lamp Flux:549.56lx1 lm		
NAME:	TYPE:LED	WEIGHT:
SPEC.:	DIM.:	SERIAL No.:
MFR.:	SUR.:	PROTECTION ANGLE:

Flux out:72.53 lm



Note:The Curves indicate the illuminated area and the average illumination when the luminaire is at different distance.

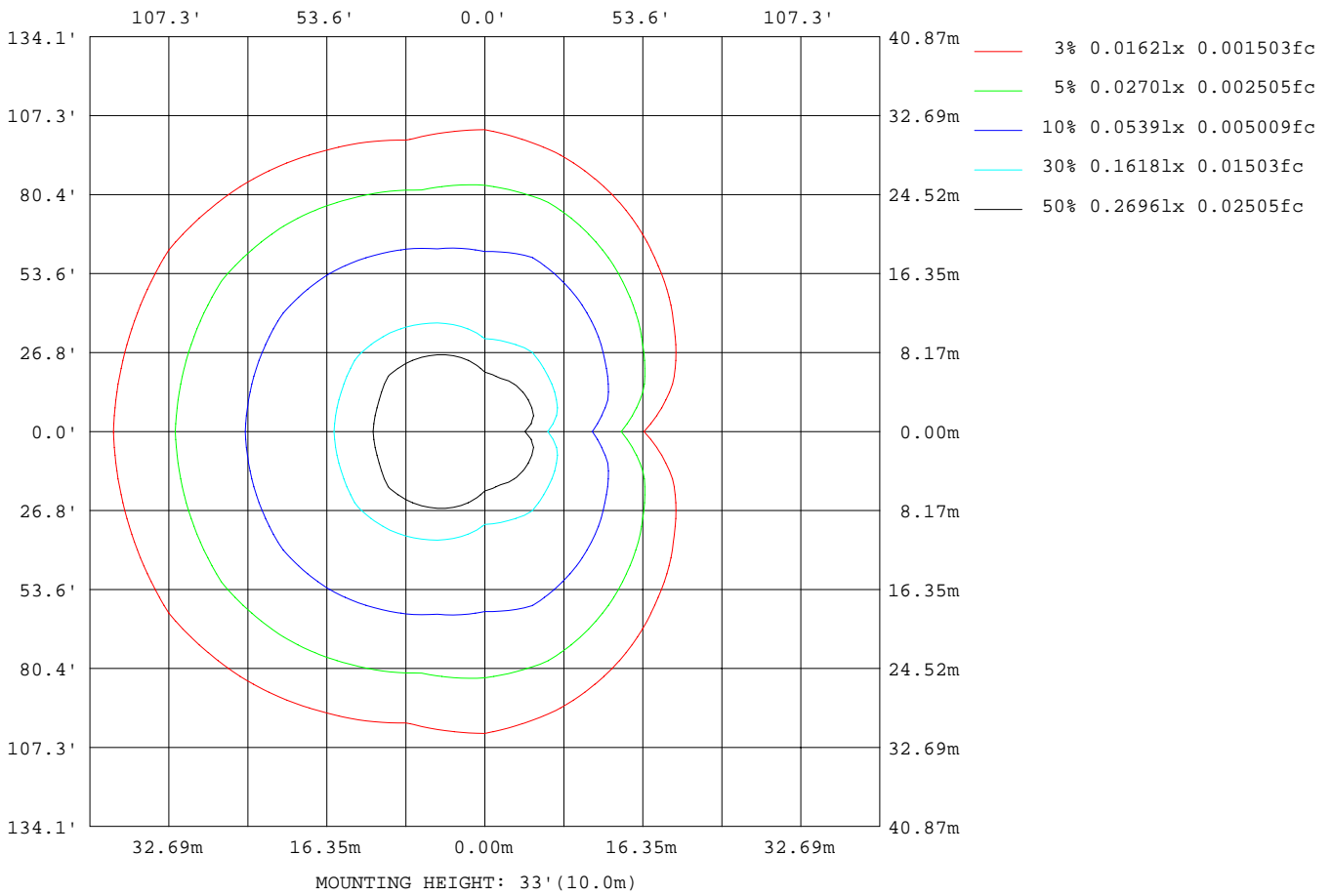
C Range: 0 - 360DEG  
 C Interval: 15.0DEG  
 Test Speed: HIGH  
 Temperature:25.3DEG  
 Operators:  
 Test Date:2023-10-10

γ Range: 0 - 180DEG  
 γ Interval: 1.0DEG  
 Test System:EVERFINE GO-2000A\_V1 SYSTEM V2.0.291  
 Humidity:65.0%  
 Test Distance:7.500m [K=1.0000]  
 Remarks:



ISOLUX DIAGRAM

Test:U:120.5V I:0.0706A P:7.941W PF:0.9344 Lamp Flux:549.561x1 lm		
NAME:	TYPE:LED	WEIGHT:
SPEC.:	DIM.:	SERIAL No.:
MFR.:	SUR.:	PROTECTION ANGLE:



C Range: 0 - 360DEG  
 C Interval: 15.0DEG  
 Test Speed: HIGH  
 Temperature: 25.3DEG  
 Operators:  
 Test Date: 2023-10-10

γ Range: 0 - 180DEG  
 γ Interval: 1.0DEG  
 Test System: EVERFINE GO-2000A\_V1 SYSTEM V2.0.291  
 Humidity: 65.0%  
 Test Distance: 7.500m [K=1.0000]  
 Remarks:

LED Avg.L Report

Test:U:120.5V I:0.0706A P:7.941W PF:0.9344 Lamp Flux:549.561x1 lm		
NAME:	TYPE:LED	WEIGHT:
SPEC.:	DIM.:	SERIAL No.:
MFR.:	SUR.:	PROTECTION ANGLE:

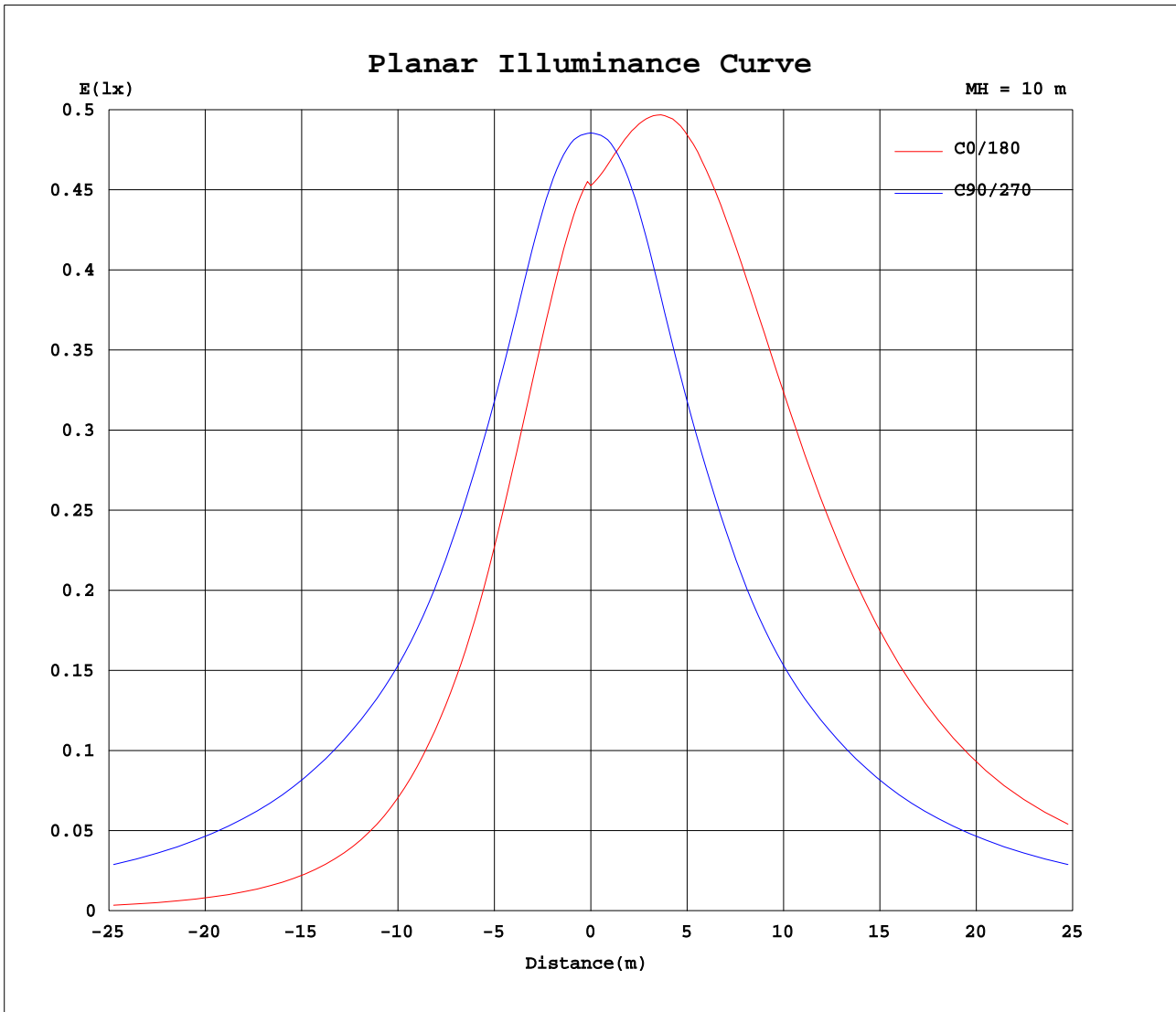
AvgL	cd/m2
L_0~180(65)av	1323
L_0~180(75)av	2015
L_0~180(85)av	5939
L_90~270(65)av	1254
L_90~270(75)av	2173
L_90~270(85)av	5667
L_45(65)av	1390
L_45(75)av	2179
L_45(85)av	6182

Standard: GB/T 29293-2012

C Range: 0 - 360DEG  
 C Interval: 15.0DEG  
 Test Speed: HIGH  
 Temperature:25.3DEG  
 Operators:  
 Test Date:2023-10-10

γ Range: 0 - 180DEG  
 γ Interval: 1.0DEG  
 Test System:EVERFINE GO-2000A\_V1 SYSTEM V2.0.291  
 Humidity:65.0%  
 Test Distance:7.500m [K=1.0000]  
 Remarks:

Planar Illuminance Curve



C Range: 0 - 360DEG  
 C Interval: 15.0DEG  
 Test Speed: HIGH  
 Temperature: 25.3DEG  
 Operators:  
 Test Date: 2023-10-10

γ Range: 0 - 180DEG  
 γ Interval: 1.0DEG  
 Test System: EVERFINE GO-2000A\_V1 SYSTEM V2.0.291  
 Humidity: 65.0%  
 Test Distance: 7.500m [K=1.0000]  
 Remarks:

LUMINOUS DISTRIBUTION INTENSITY DATA

Test:U:120.5V I:0.0706A P:7.941W PF:0.9344 Lamp Flux:549.561x1 lm		
NAME:	TYPE:LED	WEIGHT:
SPEC.:	DIM.:	SERIAL No.:
MFR.:	SUR.:	PROTECTION ANGLE:

Table--1

UNIT: cd

C(DEG) γ (DEG)	0	15	30	45	60	75	90	105	120	135	150	165	180	195	210	225	240	255	270
0	45.9	46.3	45.8	45.3	46.0	48.2	48.6	48.9	48.9	48.6	48.4	45.3	45.3	45.3	48.4	48.6	48.9	48.9	48.6
5	44.0	46.3	46.0	45.1	44.8	47.4	48.7	50.1	51.0	51.4	51.9	47.1	47.1	47.1	51.9	51.4	51.0	50.1	48.7
10	41.5	45.8	45.7	44.7	44.1	46.4	48.5	51.4	53.4	54.8	56.0	50.4	50.4	50.4	56.0	54.8	53.4	51.4	48.5
15	38.8	44.6	44.9	44.1	43.4	44.9	47.6	52.0	55.3	58.1	60.5	54.7	54.7	54.7	60.5	58.1	55.3	52.0	47.6
20	35.8	42.7	43.6	43.2	42.6	43.4	46.2	52.4	57.5	61.7	65.2	59.8	59.9	59.8	65.2	61.7	57.5	52.4	46.2
25	32.7	40.3	41.7	42.0	42.1	42.0	44.8	53.2	60.0	66.1	70.7	65.5	65.8	65.5	70.7	66.1	60.0	53.2	44.8
30	29.5	37.6	39.7	40.8	41.7	41.2	43.8	53.8	62.4	70.4	76.6	71.6	72.0	71.6	76.6	70.4	62.4	53.8	43.8
35	26.4	34.7	37.6	39.8	41.7	41.5	43.2	54.4	64.5	74.4	82.4	77.9	78.6	77.9	82.4	74.4	64.5	54.4	43.2
40	23.3	31.8	35.5	38.8	42.4	42.2	42.8	54.9	66.4	78.0	87.8	84.1	85.2	84.1	87.8	78.0	66.4	54.9	42.8
45	20.0	28.9	33.3	38.0	43.3	42.8	43.3	55.6	68.1	81.1	92.5	89.9	91.6	89.9	92.5	81.1	68.1	55.6	43.3
50	16.7	26.1	31.1	37.2	43.5	45.1	45.0	56.2	69.5	83.5	96.4	95.0	97.1	95.0	96.4	83.5	69.5	56.2	45.0
55	13.7	23.3	29.0	36.0	43.1	48.8	47.2	56.7	70.3	85.2	99.0	99.0	102	99.0	99.0	85.2	70.3	56.7	47.2
60	10.9	20.5	26.8	34.4	42.7	51.1	49.8	56.8	70.4	85.6	98.8	101	104	101	98.8	85.6	70.4	56.8	49.8
65	8.23	17.9	24.7	32.6	41.8	51.4	53.0	57.3	69.9	84.9	97.8	101	104	101	97.8	84.9	69.9	57.3	53.0
70	5.62	15.4	22.7	31.1	40.8	50.2	56.2	57.2	69.6	84.2	96.6	99.7	102	99.7	96.6	84.2	69.6	57.2	56.2
75	3.01	13.0	20.8	29.7	39.8	49.0	56.2	56.2	68.8	83.1	96.1	98.7	101	98.7	96.1	83.1	68.8	56.2	56.2
80	2.22	10.6	18.8	28.2	38.6	48.1	51.0	54.9	67.6	82.5	96.3	98.1	101	98.1	96.3	82.5	67.6	54.9	51.0
85	2.16	8.11	16.7	26.4	37.2	47.2	49.4	54.0	66.5	81.4	96.7	98.6	101	98.6	96.7	81.4	66.5	54.0	49.4
90	2.97	6.50	14.8	24.9	36.1	46.3	49.3	53.1	64.9	79.6	96.1	99.7	102	99.7	96.1	79.6	64.9	53.1	49.3
95	2.63	6.05	14.2	24.4	35.8	45.9	49.4	52.1	62.5	77.5	93.7	101	103	101	93.7	77.5	62.5	52.1	49.4
100	2.01	6.41	14.4	24.7	35.7	45.6	49.1	50.6	59.6	74.3	89.4	102	104	102	89.4	74.3	59.6	50.6	49.1
105	1.91	6.08	14.9	24.8	35.3	44.7	47.0	48.5	56.6	70.3	84.1	101	102	101	84.1	70.3	56.6	48.5	47.0
110	1.81	4.30	11.6	24.1	34.4	43.1	31.4	46.0	53.1	65.7	78.3	97.1	97.5	97.1	78.3	65.7	53.1	46.0	31.4
115	2.09	2.97	7.43	21.0	31.3	36.9	13.8	43.2	49.1	60.8	72.2	90.9	91.6	90.9	72.2	60.8	49.1	43.2	13.8
120	2.38	1.90	3.35	16.2	24.4	25.8	22.0	40.7	44.0	55.0	66.1	83.9	85.0	83.9	66.1	55.0	44.0	40.7	22.0
125	1.99	1.82	3.27	10.8	16.2	14.0	28.3	37.7	36.4	46.2	59.4	76.1	77.9	76.1	59.4	46.2	36.4	37.7	28.3
130	7.39	2.24	3.41	4.82	9.35	8.59	27.0	32.2	23.8	29.6	47.3	65.8	69.6	65.8	47.3	29.6	23.8	32.2	27.0
135	13.9	3.99	3.43	5.16	8.83	9.83	22.2	23.2	19.9	19.7	29.4	51.9	56.2	51.9	29.4	19.7	19.9	23.2	22.2
140	19.2	6.31	4.07	7.23	8.39	12.6	19.6	22.5	19.3	12.3	17.6	37.9	44.7	37.9	17.6	12.3	19.3	22.5	19.6
145	4.20	2.08	1.89	12.0	9.67	10.6	13.3	18.9	14.7	8.60	18.0	30.0	41.8	30.0	18.0	8.60	14.7	18.9	13.3
150	23.6	2.57	2.79	6.59	14.4	11.0	15.4	18.0	13.5	3.69	12.2	22.7	30.8	22.7	12.2	3.69	13.5	18.0	15.4
155	6.87	12.3	15.6	2.65	5.25	8.71	15.2	15.4	7.36	1.97	2.00	12.7	16.9	12.7	2.00	1.97	7.36	15.4	15.2
160	1.77	6.34	9.87	2.05	4.44	1.86	2.68	5.49	2.13	1.58	2.40	2.70	3.21	2.70	2.40	1.58	2.13	5.49	2.68
165	1.77	1.86	1.95	4.15	6.01	2.13	3.95	3.82	3.85	2.25	1.87	2.62	3.26	2.62	1.87	2.25	3.85	3.82	3.95
170	1.77	1.83	1.86	2.03	4.19	7.40	18.2	21.5	24.0	16.6	8.68	3.81	5.87	3.81	8.68	16.6	24.0	21.5	18.2
175	1.89	1.90	1.85	2.23	4.08	7.77	13.1	21.5	23.5	22.9	19.3	18.2	17.3	18.2	19.3	22.9	23.5	21.5	13.1
180	29.0	17.5	11.8	8.93	5.40	2.39	2.17	2.82	2.91	3.07	3.50	13.3	9.64	13.3	3.50	3.07	2.91	2.82	2.17

C Range: 0 - 360DEG  
 C Interval: 15.0DEG  
 Test Speed: HIGH  
 Temperature:25.3DEG  
 Operators:  
 Test Date:2023-10-10

γ Range: 0 - 180DEG  
 γ Interval: 1.0DEG  
 Test System:EVERFINE GO-2000A\_V1 SYSTEM V2.0.291  
 Humidity:65.0%  
 Test Distance:7.500m [K=1.0000]  
 Remarks:

LUMINOUS DISTRIBUTION INTENSITY DATA

Test:U:120.5V I:0.0706A P:7.941W PF:0.9344 Lamp Flux:549.561x1 lm		
NAME:	TYPE:LED	WEIGHT:
SPEC.:	DIM.:	SERIAL No.:
MFR.:	SUR.:	PROTECTION ANGLE:

Table--2

UNIT: cd

C( DEG) γ (DEG)	285	300	315	330	345														
0	48.2	46.0	45.3	45.8	46.3														
5	47.4	44.8	45.1	46.0	46.3														
10	46.4	44.1	44.7	45.7	45.8														
15	44.9	43.4	44.1	44.9	44.6														
20	43.4	42.6	43.2	43.6	42.7														
25	42.0	42.1	42.0	41.7	40.3														
30	41.2	41.7	40.8	39.7	37.6														
35	41.5	41.7	39.8	37.6	34.7														
40	42.2	42.4	38.8	35.5	31.8														
45	42.8	43.3	38.0	33.3	28.9														
50	45.1	43.5	37.2	31.1	26.1														
55	48.8	43.1	36.0	29.0	23.3														
60	51.1	42.7	34.4	26.8	20.5														
65	51.4	41.8	32.6	24.7	17.9														
70	50.2	40.8	31.1	22.7	15.4														
75	49.0	39.8	29.7	20.8	13.0														
80	48.1	38.6	28.2	18.8	10.6														
85	47.2	37.2	26.4	16.7	8.11														
90	46.3	36.1	24.9	14.8	6.50														
95	45.9	35.8	24.4	14.2	6.05														
100	45.6	35.7	24.7	14.4	6.41														
105	44.7	35.3	24.8	14.9	6.08														
110	43.1	34.4	24.1	11.6	4.30														
115	36.9	31.3	21.0	7.43	2.97														
120	25.8	24.4	16.2	3.35	1.90														
125	14.0	16.2	10.8	3.27	1.82														
130	8.59	9.35	4.82	3.41	2.24														
135	9.83	8.83	5.16	3.43	3.99														
140	12.6	8.39	7.23	4.07	6.31														
145	10.6	9.67	12.0	1.89	2.08														
150	11.0	14.4	6.59	2.79	2.57														
155	8.71	5.25	2.65	15.6	12.3														
160	1.86	4.44	2.05	9.87	6.34														
165	2.13	6.01	4.15	1.95	1.86														
170	7.40	4.19	2.03	1.86	1.83														
175	7.77	4.08	2.23	1.85	1.90														
180	2.39	5.40	8.93	11.8	17.5														

C Range: 0 - 360DEG  
 C Interval: 15.0DEG  
 Test Speed: HIGH  
 Temperature:25.3DEG  
 Operators:  
 Test Date:2023-10-10

γ Range: 0 - 180DEG  
 γ Interval: 1.0DEG  
 Test System:EVERFINE GO-2000A\_V1 SYSTEM V2.0.291  
 Humidity:65.0%  
 Test Distance:7.500m [K=1.0000]  
 Remarks: