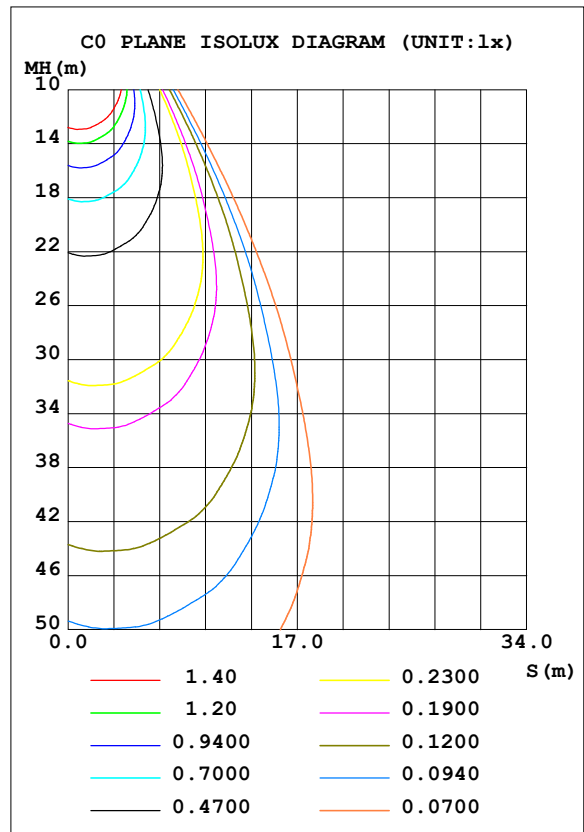
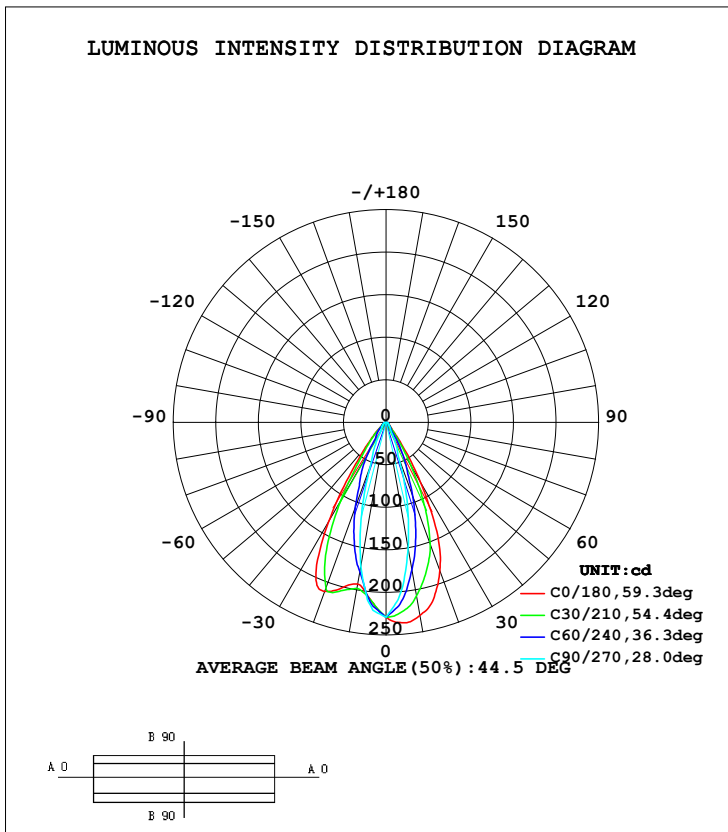


LUMINAIRE PHOTOMETRIC TEST REPORT

Model Name: RH19_RH20 Single Head	TYPE:	WEIGHT:
SPEC.:	DIM.:	SERIAL No.:2022091301
	SUR.:0.05m	PROTECTION ANGLE:

DATA OF LAMP		PHOTOMETRIC DATA			
MODEL	RH19_RH20 Single Head	I _{max} (cd)	236.7	S/MH (C0/180)	0.92
NOMINAL POWER (W)	2W	LOR (%)	100.0	S/MH (C90/270)	0.48
RATED VOLTAGE (V)	3.6	TOTAL FLUX (lm)	137.74	η UP, DN (C0-180)	0.0, 45.3
NOMINAL FLUX (lm)	137.741	CIE CLASS	DIRECT	η UP, DN (C180-360)	0.0, 54.7
LAMPS INSIDE	1	η up (%)	0.0	CIBSE SHR NOM	0.50
TEST VOLTAGE (V)	3.6	η down (%)	100.0	CIBSE SHR MAX	0.55



C Range: 0 - 360DEG
 C Interval: 5.0DEG
 Test Speed: HIGH
 Temperature: 25.3DEG
 Operators: HJL
 Test Date: 2022-09-13

γ Range: 0 - 90DEG
 γ Interval: 0.5DEG
 Test System: EVERFINE GO-2000H_V1 SYSTEM V2.0.287
 Humidity: 65.0%
 Test Distance: 13.693m [K=1.0000]
 Remarks:

ZONAL FLUX DIAGRAM

ZONAL FLUX DIAGRAM:

γ	C0	C45	C90	C135	C180	C225	C270	C315	γ	Φ zone	Φ total	%lum,lamp
5	236.4	217.2	200.6	197.2	209.6	211.2	215.7	227.9	0- 5	5.257	5.257	3.82,3.82
10	230.6	192.6	149.9	158.4	193.1	190.3	171.3	208.9	5- 10	14.25	19.50	14.2,14.2
15	215.5	161.8	96.08	124.5	201.4	182.8	111.6	176.1	10- 15	20.32	39.82	28.9,28.9
20	185.5	121.6	42.30	94.01	211.4	152.6	51.97	126.4	15- 20	23.16	62.98	45.7,45.7
25	141.5	77.84	26.55	59.88	195.7	112.1	32.10	72.82	20- 25	22.33	85.31	61.9,61.9
30	81.06	42.28	10.81	34.57	135.5	73.31	12.23	37.43	25- 30	18.00	103.3	75,75
35	34.70	20.36	8.993	19.66	71.60	41.80	10.14	19.14	30- 35	11.32	114.6	83.2,83.2
40	12.78	8.342	7.178	9.076	35.38	19.65	8.057	8.453	35- 40	6.435	121.1	87.9,87.9
45	7.928	6.484	5.471	7.229	17.55	13.76	6.106	6.727	40- 45	4.110	125.2	90.9,90.9
50	5.683	4.963	4.629	5.626	8.347	8.825	5.250	5.362	45- 50	2.872	128.0	93,93
55	4.537	3.771	3.894	4.359	5.616	5.465	4.531	4.317	50- 55	2.228	130.3	94.6,94.6
60	3.651	3.054	3.160	3.495	4.405	4.390	3.813	3.671	55- 60	1.894	132.2	95.9,95.9
65	2.775	2.441	2.454	2.673	3.355	3.446	3.026	3.067	60- 65	1.597	133.8	97.1,97.1
70	2.262	1.853	1.749	1.970	2.471	2.703	2.239	2.454	65- 70	1.288	135.0	98,98
75	1.738	1.280	1.355	1.452	1.782	2.185	1.766	1.822	70- 75	1.006	136.0	98.8,98.8
80	1.318	0.9211	0.9619	1.101	1.294	1.684	1.294	1.364	75- 80	0.7748	136.8	99.3,99.3
85	0.9915	0.5948	0.5684	0.7807	0.9185	1.188	0.8220	0.9448	80- 85	0.5674	137.4	99.7,99.7
90	0.0583	0.2798	0.1749	0.4664	0.0233	0.6996	0.3498	0.5247	85- 90	0.3522	137.7	100,100
95									90- 95			
100									95-100			
105									100-105			
110									105-110			
115									110-115			
120									115-120			
125									120-125			
130									125-130			
135									130-135			
140									135-140			
145									140-145			
150									145-150			
155									150-155			
160									155-160			
165									160-165			
170									165-170			
175									170-175			
180									175-180			
DEG	LUMINOUS INTENSITY:cd								UNIT:lm			

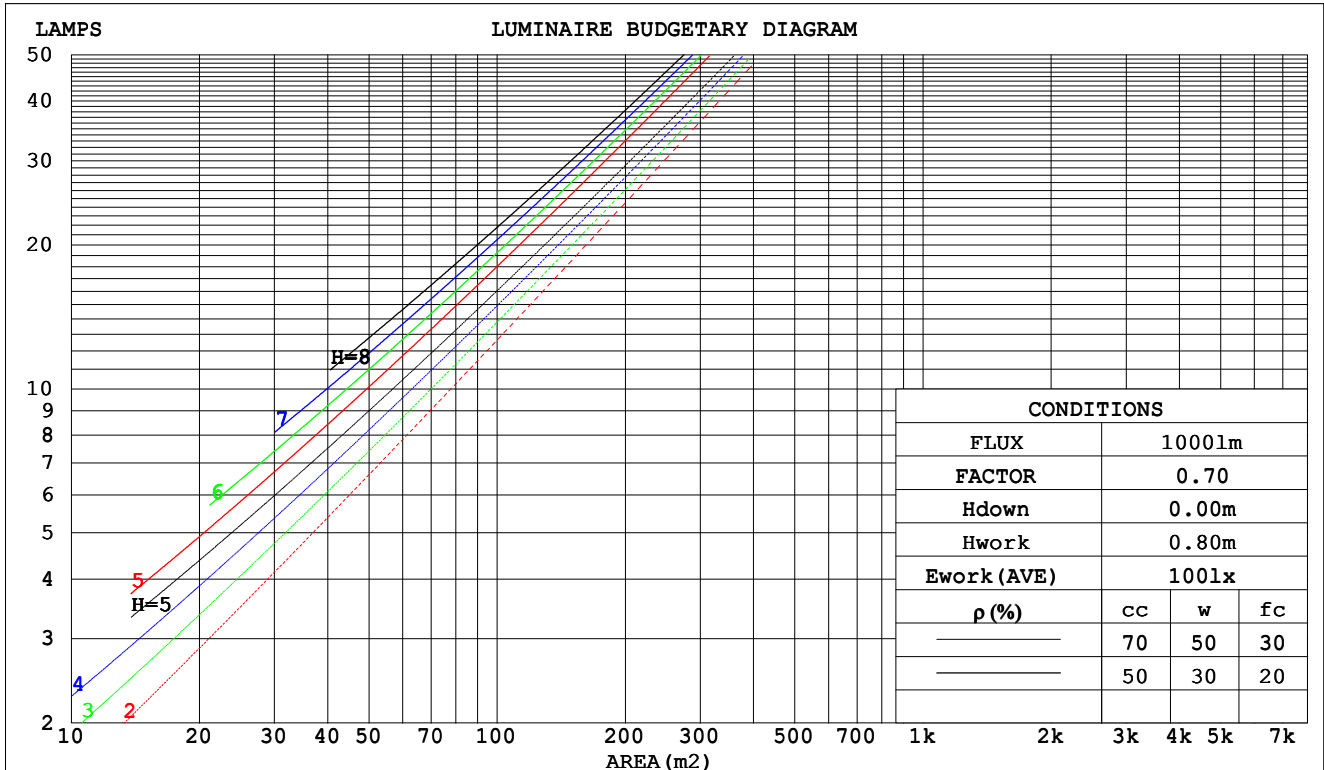
C Range: 0 - 360DEG
 C Interval: 5.0DEG
 Test Speed: HIGH
 Temperature:25.3DEG
 Operators:HJL
 Test Date:2022-09-13

γ Range: 0 - 90DEG
 γ Interval: 0.5DEG
 Test System:EVERFINE GO-2000H_V1 SYSTEM V2.0.287
 Humidity:65.0%
 Test Distance:13.693m [K=1.0000]
 Remarks:

CU AND LUMINAIRE BUDGETARY ESTIMATE DIAGRAM

Model Name: RH19_RH20 Single Head	TYPE:	WEIGHT:
SPEC.:	DIM.:	SERIAL No.:2022091301
	SUR.:0.05m	PROTECTION ANGLE:

ρcc	80%			70%			50%			30%			10%			0														
ρw	50%	30%	10%	50%	30%	10%	50%	30%	10%	50%	30%	10%	50%	30%	10%	0														
ρfc	20%			20%			20%			20%			20%			0														
RCR	RCR:Room Cavity Ratio															Coefficients of Utilization(CU)														
0.0	1.19	1.19	1.19	1.16	1.16	1.16	1.11	1.11	1.11	1.06	1.06	1.06	1.02	1.02	1.02	.00														
1.0	1.10	1.07	1.05	1.08	1.06	1.03	1.04	1.02	1.00	1.00	.99	.97	.97	.96	.94	.93														
2.0	1.02	.98	.95	1.01	.97	.93	.97	.94	.91	.94	.92	.89	.92	.89	.88	.86														
3.0	.95	.90	.86	.94	.89	.86	.91	.87	.84	.89	.86	.83	.87	.84	.82	.80														
4.0	.89	.84	.80	.88	.83	.79	.86	.82	.78	.84	.80	.77	.82	.79	.76	.75														
5.0	.84	.78	.74	.83	.78	.74	.81	.77	.73	.80	.75	.72	.78	.74	.72	.70														
6.0	.79	.73	.69	.78	.73	.69	.77	.72	.68	.76	.71	.68	.74	.70	.67	.66														
7.0	.75	.69	.65	.74	.69	.65	.73	.68	.64	.72	.67	.64	.71	.67	.64	.62														
8.0	.71	.65	.61	.70	.65	.61	.69	.64	.61	.68	.64	.61	.67	.63	.60	.59														
9.0	.67	.62	.58	.67	.62	.58	.66	.61	.58	.65	.61	.57	.64	.60	.57	.56														
10.0	.64	.59	.55	.64	.58	.55	.63	.58	.55	.62	.58	.55	.62	.57	.54	.53														



C Range: 0 - 360DEG
 C Interval: 5.0DEG
 Test Speed: HIGH
 Temperature:25.3DEG
 Operators:HJL
 Test Date:2022-09-13

γ Range: 0 - 90DEG
 γ Interval: 0.5DEG
 Test System:EVERFINE GO-2000H_V1 SYSTEM V2.0.287
 Humidity:65.0%
 Test Distance:13.693m [K=1.0000]
 Remarks:

WEC AND CCEC

Model Name: RH19_RH20 Single Head	TYPE:	WEIGHT:
SPEC.:	DIM.:	SERIAL No.:2022091301
	SUR.:0.05m	PROTECTION ANGLE:

ρ_{CC}	80%			70%			50%			30%			10%			0
ρ_w	50%	30%	10%	50%	30%	10%	50%	30%	10%	50%	30%	10%	50%	30%	10%	0
ρ_{fc}	20%			20%			20%			20%			20%			0
RCR	RCR:Room Cavity Ratio						Wall Exitance Coefficients(WEC)									
0.0																
1.0	.190	.108	.034	.183	.105	.033	.171	.098	.031	.159	.092	.029	.148	.086	.028	
2.0	.178	.098	.030	.173	.095	.029	.162	.090	.028	.152	.085	.027	.143	.081	.025	
3.0	.167	.089	.027	.162	.087	.026	.153	.083	.025	.145	.079	.024	.137	.076	.023	
4.0	.157	.082	.024	.153	.080	.024	.145	.077	.023	.138	.074	.022	.131	.071	.022	
5.0	.148	.076	.022	.145	.074	.022	.138	.072	.021	.132	.069	.021	.126	.067	.020	
6.0	.140	.070	.020	.137	.069	.020	.131	.067	.020	.126	.065	.019	.120	.063	.019	
7.0	.133	.066	.019	.130	.065	.019	.125	.063	.018	.120	.062	.018	.116	.060	.018	
8.0	.127	.062	.017	.124	.061	.017	.120	.060	.017	.115	.058	.017	.111	.057	.017	
9.0	.121	.059	.016	.119	.058	.016	.115	.057	.016	.111	.055	.016	.107	.054	.016	
10.0	.116	.055	.015	.114	.055	.015	.110	.054	.015	.106	.053	.015	.103	.052	.015	

ρ_{CC}	80%			70%			50%			30%			10%			0
ρ_w	50%	30%	10%	50%	30%	10%	50%	30%	10%	50%	30%	10%	50%	30%	10%	0
ρ_{fc}	20%			20%			20%			20%			20%			0
RCR	RCR:Room Cavity Ratio						Ceiling Cavity Exitance Coefficients(CCEC)									
0.0	.190	.190	.190	.163	.163	.163	.111	.111	.111	.064	.064	.064	.020	.020	.020	
1.0	.172	.157	.144	.147	.135	.124	.101	.093	.086	.058	.054	.050	.019	.017	.016	
2.0	.157	.132	.112	.135	.114	.097	.092	.079	.067	.053	.046	.039	.017	.015	.013	
3.0	.145	.114	.089	.124	.098	.077	.085	.068	.054	.049	.040	.032	.016	.013	.010	
4.0	.134	.099	.072	.115	.085	.063	.079	.060	.044	.046	.035	.026	.015	.011	.009	
5.0	.125	.087	.059	.108	.076	.052	.074	.053	.036	.043	.031	.022	.014	.010	.007	
6.0	.117	.078	.050	.101	.068	.043	.070	.047	.031	.040	.028	.018	.013	.009	.006	
7.0	.111	.070	.042	.095	.061	.037	.066	.043	.026	.038	.025	.015	.012	.008	.005	
8.0	.105	.064	.036	.090	.056	.032	.062	.039	.022	.036	.023	.013	.012	.008	.004	
9.0	.099	.059	.031	.086	.051	.027	.059	.036	.019	.035	.021	.012	.011	.007	.004	
10.0	.095	.054	.028	.082	.047	.024	.057	.033	.017	.033	.020	.010	.011	.006	.003	

C Range: 0 - 360DEG
 C Interval: 5.0DEG
 Test Speed: HIGH
 Temperature:25.3DEG
 Operators:HJL
 Test Date:2022-09-13

γ Range: 0 - 90DEG
 γ Interval: 0.5DEG
 Test System:EVERFINE GO-2000H_V1 SYSTEM V2.0.287
 Humidity:65.0%
 Test Distance:13.693m [K=1.0000]
 Remarks:

UGR(Unified Glare Rating) Table

Model Name: RH19_RH20 Single Head						TYPE:					WEIGHT:				
SPEC.:						DIM.:					SERIAL No.:2022091301				
						SUR.:0.05m					PROTECTION ANGLE:				
ceiling/cavity	0.7	0.7	0.5	0.5	0.3	0.7	0.7	0.5	0.5	0.3	0.7	0.7	0.5	0.5	0.3
walls	0.5	0.3	0.5	0.3	0.3	0.5	0.3	0.5	0.3	0.3	0.5	0.3	0.5	0.3	0.3
working plane	0.2	0.2	0.2	0.2	0.2	0.2	0.2	0.2	0.2	0.2	0.2	0.2	0.2	0.2	0.2
Room dimensions	Viewed crosswise					Viewed endwise									
x = 2H y = 2H	11.8	12.8	12.1	13.0	13.1	8.8	9.8	9.1	9.9	10.1	11.8	12.8	12.1	13.0	13.1
3H	12.4	13.3	12.7	13.5	13.7	9.9	10.8	10.2	11.0	11.2	12.4	13.3	12.7	13.5	13.7
4H	12.8	13.6	13.1	13.8	14.1	10.4	11.3	10.7	11.5	11.7	12.8	13.6	13.1	13.8	14.1
6H	13.2	14.0	13.5	14.2	14.5	10.9	11.7	11.2	11.9	12.2	13.2	14.0	13.5	14.2	14.5
8H	13.4	14.2	13.7	14.5	14.7	11.1	11.9	11.5	12.2	12.4	13.4	14.2	13.7	14.5	14.7
12H	13.7	14.4	14.0	14.7	15.0	11.3	12.1	11.7	12.3	12.6	13.7	14.4	14.0	14.7	15.0
4H 2H	11.9	12.7	12.2	13.0	13.2	9.3	10.1	9.6	10.4	10.6	11.9	12.7	12.2	13.0	13.2
3H	12.7	13.4	13.0	13.7	13.9	10.6	11.3	10.9	11.6	11.9	12.7	13.4	13.0	13.7	13.9
4H	13.2	13.8	13.5	14.1	14.4	11.2	11.9	11.6	12.2	12.5	13.2	13.8	13.5	14.1	14.4
6H	13.8	14.3	14.1	14.7	15.0	11.9	12.5	12.3	12.8	13.1	13.8	14.3	14.1	14.7	15.0
8H	14.1	14.7	14.5	15.0	15.4	12.2	12.7	12.6	13.1	13.4	14.1	14.7	14.5	15.0	15.4
12H	14.5	15.0	14.9	15.4	15.8	12.5	12.9	12.9	13.3	13.7	14.5	15.0	14.9	15.4	15.8
8H 4H	13.2	13.8	13.6	14.1	14.5	11.5	12.0	11.9	12.4	12.8	13.2	13.8	13.6	14.1	14.5
6H	14.0	14.4	14.4	14.8	15.2	12.3	12.7	12.7	13.1	13.6	14.0	14.4	14.4	14.8	15.2
8H	14.4	14.8	14.9	15.3	15.7	12.7	13.1	13.2	13.5	14.0	14.4	14.8	14.9	15.3	15.7
12H	15.0	15.4	15.5	15.8	16.3	13.1	13.4	13.6	13.9	14.4	15.0	15.4	15.5	15.8	16.3
12H 4H	13.2	13.7	13.6	14.1	14.5	11.5	12.0	11.9	12.4	12.8	13.2	13.7	13.6	14.1	14.5
6H	14.0	14.4	14.5	14.8	15.3	12.4	12.8	12.8	13.2	13.6	14.0	14.4	14.5	14.8	15.3
8H	14.5	14.9	15.0	15.3	15.8	12.8	13.2	13.3	13.6	14.1	14.5	14.9	15.0	15.3	15.8
Variations with the observer position at spacings:															
S = 1.0H	+ 1.1 / - 0.7					+ 0.3 / - 0.3									
1.5H	+ 2.1 / - 0.5					+ 0.2 / - 0.2									
2.0H	+ 0.7 / - 0.5					+ 0.2 / - 0.4									

CIE Pub.117 Corrected 137.7 lm Total Lamp Luminous Flux. (8log(F/F0) = -6.9)

C Range: 0 - 360DEG
C Interval: 5.0DEG
Test Speed: HIGH
Temperature:25.3DEG
Operators:HJL
Test Date:2022-09-13

γ Range: 0 - 90DEG
 γ Interval: 0.5DEG
Test System:EVERFINE GO-2000H_V1 SYSTEM V2.0.287
Humidity:65.0%
Test Distance:13.693m [K=1.0000]
Remarks:

UTILIZATION FACTORS TABLE

Model Name: RH19_RH20 Single Head	TYPE:	WEIGHT:
SPEC.:	DIM.:	SERIAL No.:2022091301
	SUR.:0.05m	PROTECTION ANGLE:

REFLECTANCE										
Ceiling	0.8	0.8	0.8	0.7	0.7	0.7	0.5	0.5	0.5	0
Walls	0.7	0.5	0.3	0.7	0.5	0.3	0.7	0.5	0.3	0
Working plane	0.2	0.2	0.2	0.2	0.2	0.2	0.2	0.2	0.2	0
ROOM INDEX	UTILIZATION FACTORS (PERCENT) $k(RI) \times RCR = 5$									
$k = 0.60$	84	77	73	84	77	73	83	77	73	69
0.80	92	85	81	91	85	81	90	84	81	77
1.00	97	90	86	96	90	86	94	90	85	81
1.25	101	95	91	100	94	91	98	93	90	85
1.50	104	98	95	102	98	94	100	96	93	88
2.00	107	102	99	105	101	98	103	99	96	91
2.50	109	104	101	107	103	100	104	101	98	92
3.00	110	107	104	109	105	102	105	103	100	94
4.00	113	110	107	111	108	106	107	105	103	96
5.00	114	112	109	112	110	108	108	106	105	97
ROOM INDEX	UF(total)									Direct
According to DIN EN 13032-2 2004			Suspended				SHRNOM = SHRNOM = 1.25			

C Range: 0 - 360DEG
 C Interval: 5.0DEG
 Test Speed: HIGH
 Temperature:25.3DEG
 Operators:HJL
 Test Date:2022-09-13

γ Range: 0 - 90DEG
 γ Interval: 0.5DEG
 Test System:EVERFINE GO-2000H_V1 SYSTEM V2.0.287
 Humidity:65.0%
 Test Distance:13.693m [K=1.0000]
 Remarks:

ISOCANDELA DIAGRAM

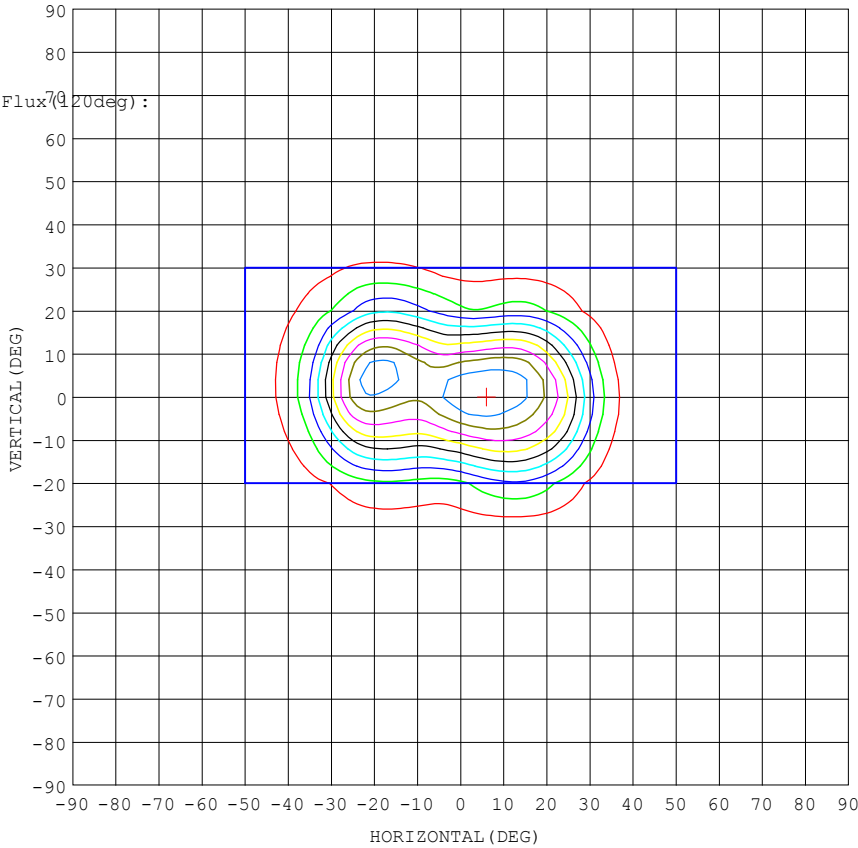
Model Name: RH19_RH20 Single Head	TYPE:	WEIGHT:
SPEC.:	DIM.:	SERIAL No.:2022091301
	SUR.:0.05m	PROTECTION ANGLE:

Conical surface Flux(90deg):

125.16 lm
 %lum = 90.9%
 %lamp = 90.9%

Conical surface Flux(70deg):

132.15 lm
 %lum = 95.9%
 %lamp = 95.9%



MAX = 236.72
 MIN = 4.1630
 AVG = 78.348
 AVG/MAX = 0.33
 MIN/MAX = 0.02

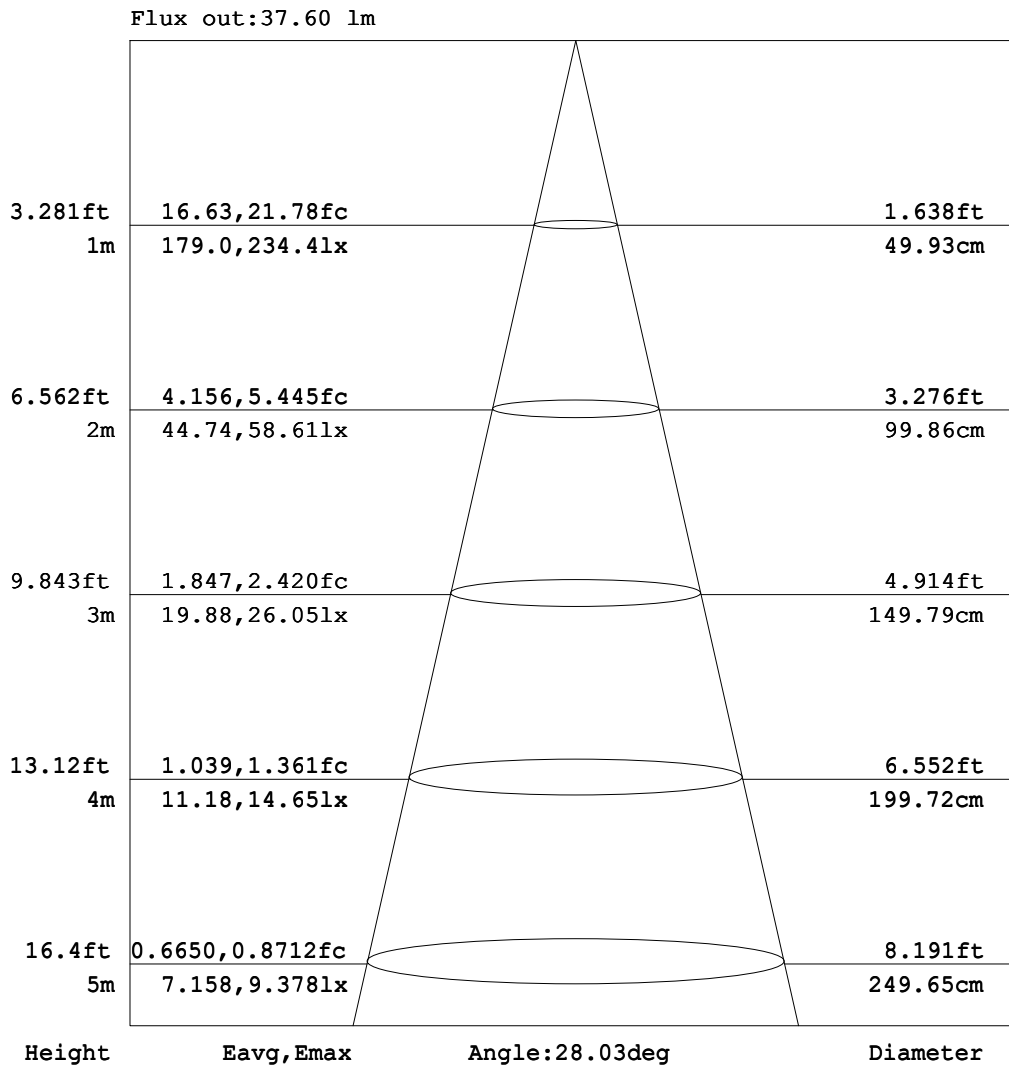
Imax:236.7 (H6.0,V0.0)
 (At:C=0.0,Gamma=6.0)
 UNIT: cd

C Range: 0 - 360DEG
 C Interval: 5.0DEG
 Test Speed: HIGH
 Temperature:25.3DEG
 Operators:HJL
 Test Date:2022-09-13

γ Range: 0 - 90DEG
 γ Interval: 0.5DEG
 Test System:EVERFINE GO-2000H_V1 SYSTEM V2.0.287
 Humidity:65.0%
 Test Distance:13.693m [K=1.0000]
 Remarks:

AAI Figure

Model Name: RH19_RH20 Single Head	TYPE:	WEIGHT:
SPEC.:	DIM.:	SERIAL No.:2022091301
	SUR.:0.05m	PROTECTION ANGLE:



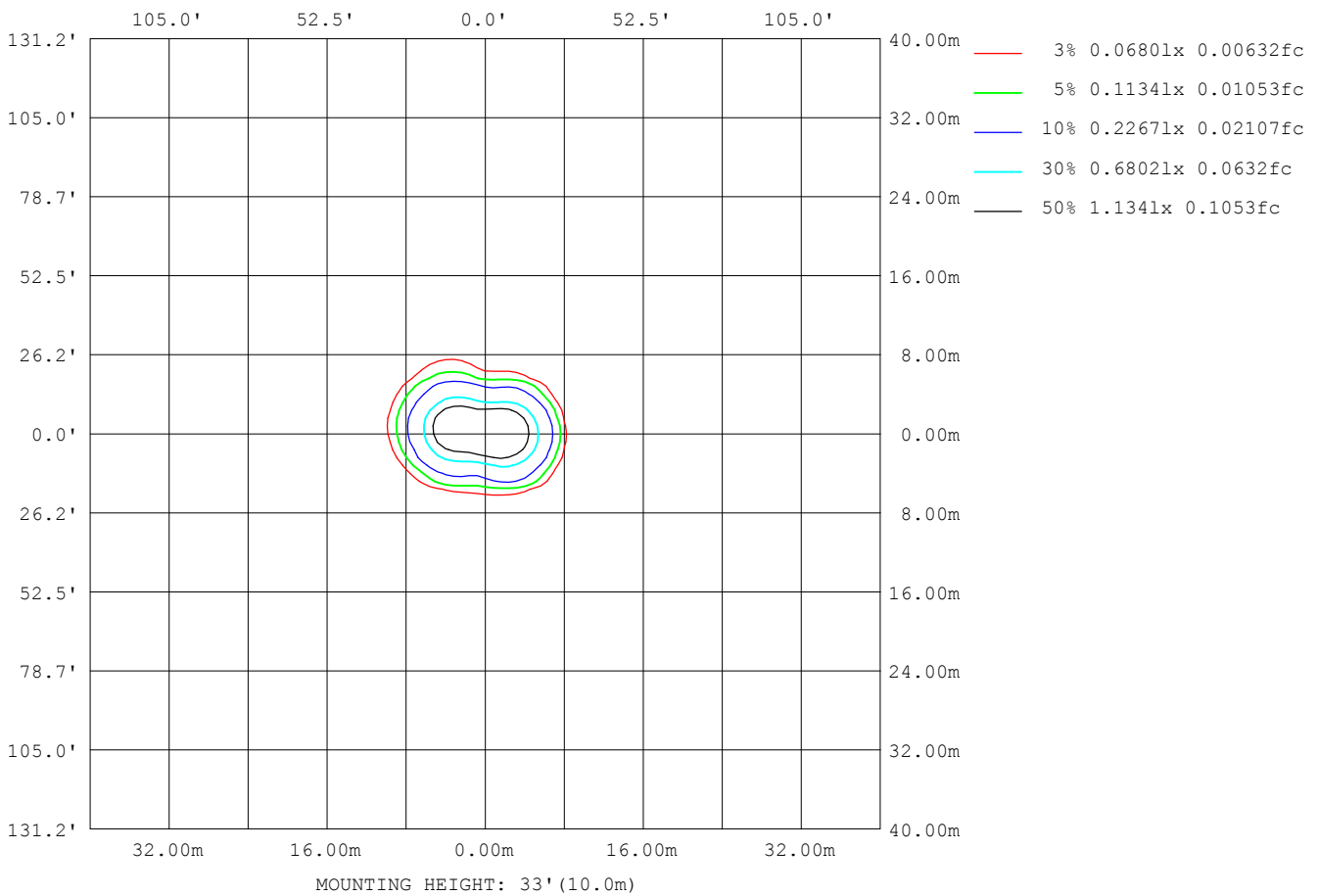
Note: The Curves indicate the illuminated area and the average illumination when the luminaire is at different distance.

C Range: 0 - 360DEG
 C Interval: 5.0DEG
 Test Speed: HIGH
 Temperature:25.3DEG
 Operators:HJL
 Test Date:2022-09-13

γ Range: 0 - 90DEG
 γ Interval: 0.5DEG
 Test System:EVERFINE GO-2000H_V1 SYSTEM V2.0.287
 Humidity:65.0%
 Test Distance:13.693m [K=1.0000]
 Remarks:

ISOLUX DIAGRAM

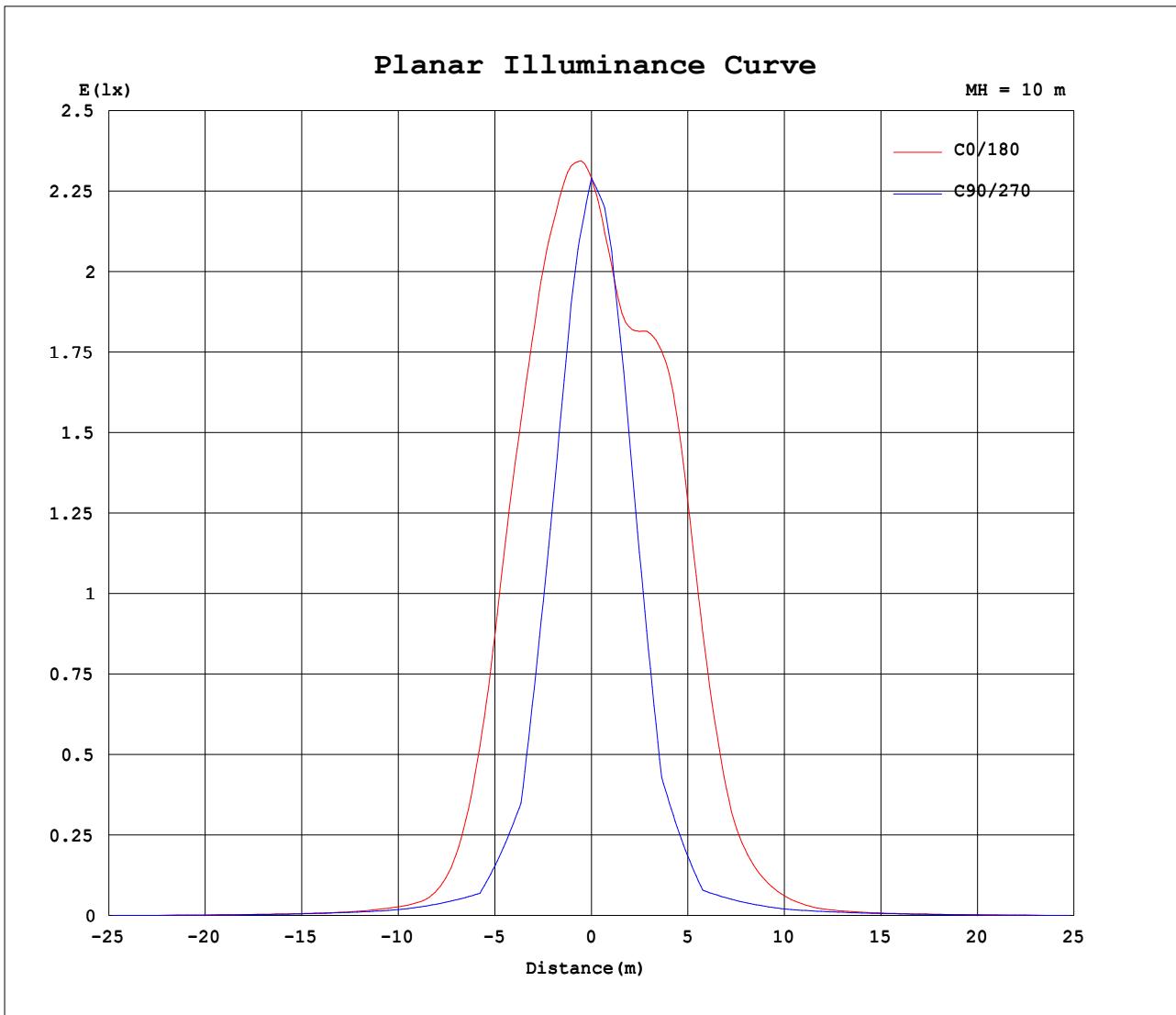
Model Name: RH19_RH20 Single Head	TYPE:	WEIGHT:
SPEC.:	DIM.:	SERIAL No.:2022091301
	SUR.:0.05m	PROTECTION ANGLE:



C Range: 0 - 360DEG
 C Interval: 5.0DEG
 Test Speed: HIGH
 Temperature:25.3DEG
 Operators:HJL
 Test Date:2022-09-13

γ Range: 0 - 90DEG
 γ Interval: 0.5DEG
 Test System:EVERFINE GO-2000H_V1 SYSTEM V2.0.287
 Humidity:65.0%
 Test Distance:13.693m [K=1.0000]
 Remarks:

Planar Illuminance Curve



C Range: 0 - 360DEG
 C Interval: 5.0DEG
 Test Speed: HIGH
 Temperature:25.3DEG
 Operators:HJL
 Test Date:2022-09-13

γ Range: 0 - 90DEG
 γ Interval: 0.5DEG
 Test System:EVERFINE GO-2000H_V1 SYSTEM V2.0.287
 Humidity:65.0%
 Test Distance:13.693m [K=1.0000]
 Remarks:

LUMINOUS DISTRIBUTION INTENSITY DATA

Model Name: RH19_RH20 Single Head		TYPE :	WEIGHT :
SPEC. :		DIM. :	SERIAL No.:2022091301
		SUR. : 0.05m	PROTECTION ANGLE :

Table--1

UNIT: cd

C (DEG) γ (DEG)	0	5	10	15	20	25	30	35	40	45	50	55	60	65	70	75	80	85	90
0	229	229	229	229	229	229	229	229	229	229	229	229	229	229	229	229	229	229	229
5	236	234	232	230	227	225	223	221	219	217	215	214	211	209	207	205	204	202	201
10	231	226	222	218	215	211	207	203	198	193	187	181	176	170	165	161	156	153	150
15	216	210	204	199	194	188	182	177	170	162	153	144	135	127	119	112	106	100	96.1
20	186	180	176	171	165	159	152	142	132	122	112	102	91.8	81.8	72.1	63.0	54.6	47.5	42.3
25	141	138	135	130	124	116	107	97.1	87.4	77.8	68.3	62.0	56.3	50.4	44.3	38.8	33.9	29.8	26.6
30	81.1	79.4	78.0	73.8	69.6	64.6	58.6	50.9	43.3	42.3	39.6	35.4	30.2	24.6	19.5	15.5	12.8	11.4	10.8
35	34.7	33.7	32.5	30.7	29.5	27.6	23.6	22.5	22.2	20.4	16.7	11.2	10.4	10.2	9.85	9.56	9.33	9.15	8.99
40	12.8	12.8	12.5	12.2	11.9	10.7	10.8	11.1	10.2	8.34	8.40	8.38	8.28	8.14	7.85	7.56	7.35	7.24	7.18
45	7.93	7.85	7.85	7.39	6.99	6.85	6.68	6.36	6.47	6.48	6.50	6.42	6.28	6.09	5.83	5.54	5.44	5.41	5.47
50	5.68	5.59	5.57	5.29	5.11	5.07	4.93	4.87	4.95	4.96	4.86	4.74	4.62	4.68	4.68	4.59	4.57	4.57	4.63
55	4.54	4.39	4.31	4.18	4.08	4.03	3.92	3.82	3.76	3.77	3.80	3.90	3.95	4.00	4.01	3.93	3.89	3.87	3.89
60	3.65	3.51	3.39	3.33	3.29	3.18	3.08	2.97	2.97	3.05	3.15	3.20	3.29	3.35	3.35	3.27	3.21	3.17	3.16
65	2.77	2.70	2.56	2.69	2.53	2.46	2.41	2.37	2.36	2.44	2.52	2.55	2.61	2.61	2.61	2.52	2.47	2.45	2.45
70	2.26	2.19	2.14	2.09	1.94	1.88	1.90	1.86	1.80	1.85	1.86	1.86	1.88	1.81	1.81	1.74	1.72	1.71	1.75
75	1.74	1.61	1.68	1.54	1.54	1.48	1.45	1.38	1.28	1.28	1.26	1.28	1.32	1.30	1.33	1.31	1.32	1.32	1.36
80	1.32	1.26	1.20	1.25	1.19	1.04	0.97	0.98	0.92	0.92	0.92	0.92	0.95	0.93	0.94	0.93	0.94	0.94	0.96
85	0.99	0.88	0.94	0.85	0.79	0.71	0.67	0.66	0.62	0.59	0.59	0.57	0.58	0.55	0.55	0.56	0.56	0.56	0.57
90	0.06	0.55	0.55	0.54	0.50	0.42	0.37	0.34	0.33	0.28	0.26	0.23	0.21	0.17	0.17	0.17	0.17	0.17	0.17

C Range: 0 - 360DEG
 C Interval: 5.0DEG
 Test Speed: HIGH
 Temperature:25.3DEG
 Operators:HJL
 Test Date:2022-09-13

γ Range: 0 - 90DEG
 γ Interval: 0.5DEG
 Test System:EVERFINE GO-2000H_V1 SYSTEM V2.0.287
 Humidity:65.0%
 Test Distance:13.693m [K=1.0000]
 Remarks:

LUMINOUS DISTRIBUTION INTENSITY DATA

Model Name: RH19_RH20 Single Head	TYPE :	WEIGHT :
SPEC. :	DIM. :	SERIAL No. : 2022091301
	SUR. : 0.05m	PROTECTION ANGLE :

Table--2

UNIT: cd

C (DEG) γ (DEG)	95	100	105	110	115	120	125	130	135	140	145	150	155	160	165	170	175	180	185
0	229	229	229	229	229	229	229	229	229	229	229	229	229	229	229	229	229	229	229
5	199	198	197	197	197	196	197	197	197	198	198	199	201	202	204	205	207	210	209
10	148	148	148	148	149	151	153	155	158	162	166	170	174	177	181	185	189	193	195
15	93.9	93.3	94.0	95.8	98.8	103	109	116	125	134	142	151	160	168	177	185	193	201	206
20	39.3	39.2	42.1	47.0	53.7	61.7	71.2	82.1	94.0	107	120	134	147	160	174	187	199	211	217
25	24.4	23.9	25.0	27.4	30.6	34.7	39.5	46.5	59.9	74.1	89.1	104	120	135	152	168	182	196	199
30	10.8	11.3	12.5	14.6	17.5	21.4	25.9	30.4	34.6	38.0	50.6	64.5	76.8	87.9	100	113	124	136	138
35	8.84	8.82	8.97	9.19	9.51	9.87	10.8	15.6	19.7	22.5	24.4	28.9	39.1	46.2	51.0	58.4	65.0	71.6	72.5
40	7.16	7.26	7.40	7.63	7.91	8.27	8.67	8.96	9.08	11.5	14.0	15.7	17.4	21.8	25.1	28.4	31.9	35.4	36.6
45	5.60	5.74	5.82	6.05	6.25	6.57	6.90	7.12	7.23	7.23	7.31	9.03	9.69	10.6	12.8	14.2	15.8	17.5	18.3
50	4.73	4.80	4.84	4.89	4.93	4.98	5.22	5.46	5.63	5.69	5.80	5.81	6.28	6.73	7.18	7.48	7.91	8.35	8.70
55	3.96	3.96	4.00	4.03	4.08	4.14	4.23	4.29	4.36	4.53	4.61	4.66	4.69	4.96	5.22	5.32	5.50	5.62	5.69
60	3.16	3.13	3.15	3.20	3.24	3.32	3.37	3.42	3.50	3.57	3.75	3.77	3.85	3.96	4.16	4.24	4.36	4.40	4.44
65	2.46	2.47	2.48	2.53	2.50	2.55	2.55	2.60	2.67	2.76	2.89	2.97	3.04	3.13	3.19	3.34	3.31	3.35	3.34
70	1.76	1.83	1.87	1.89	1.88	1.92	1.96	1.97	1.97	1.98	2.11	2.20	2.27	2.39	2.36	2.40	2.44	2.47	2.50
75	1.36	1.41	1.44	1.42	1.42	1.44	1.44	1.43	1.45	1.51	1.53	1.57	1.62	1.74	1.85	1.72	1.83	1.78	1.88
80	0.96	1.01	1.03	1.03	1.04	1.06	1.07	1.11	1.10	1.12	1.13	1.17	1.19	1.20	1.23	1.36	1.32	1.29	1.36
85	0.57	0.60	0.62	0.63	0.65	0.68	0.71	0.79	0.78	0.80	0.82	0.85	0.91	0.93	0.99	0.89	0.99	0.92	1.06
90	0.17	0.20	0.21	0.24	0.26	0.30	0.36	0.47	0.47	0.47	0.51	0.54	0.61	0.61	0.61	0.59	0.43	0.02	0.79

C Range: 0 - 360DEG
 C Interval: 5.0DEG
 Test Speed: HIGH
 Temperature: 25.3DEG
 Operators: HJL
 Test Date: 2022-09-13

γ Range: 0 - 90DEG
 γ Interval: 0.5DEG
 Test System: EVERFINE GO-2000H_V1 SYSTEM V2.0.287
 Humidity: 65.0%
 Test Distance: 13.693m [K=1.0000]
 Remarks:

LUMINOUS DISTRIBUTION INTENSITY DATA

Model Name: RH19_RH20 Single Head	TYPE:	WEIGHT:
SPEC.:	DIM.:	SERIAL No.:2022091301
	SUR.:0.05m	PROTECTION ANGLE:

Table--3

UNIT: cd

C (DEG) γ (DEG)	190	195	200	205	210	215	220	225	230	235	240	245	250	255	260	265	270	275	280
0	229	229	229	229	229	229	229	229	229	229	229	229	229	229	229	229	229	229	229
5	209	209	209	209	210	210	211	211	212	212	212	213	213	213	214	215	216	217	218
10	196	198	199	199	198	197	194	190	186	182	178	174	171	169	169	170	171	173	175
15	210	213	213	210	205	200	195	183	169	157	145	135	126	119	114	112	112	112	115
20	222	223	220	215	207	188	170	153	136	120	106	92.6	81.2	71.4	63.1	56.6	52.0	50.2	51.9
25	202	200	195	184	166	148	130	112	94.7	82.2	71.5	61.7	53.2	45.9	39.9	35.2	32.1	30.7	31.4
30	140	138	132	120	107	93.1	79.9	73.3	64.5	54.8	44.9	35.7	27.8	21.4	16.6	13.5	12.2	12.3	13.3
35	72.7	71.0	68.2	63.7	53.9	48.7	46.3	41.8	34.0	24.2	21.4	19.2	16.9	14.6	12.5	10.9	10.1	9.97	10.1
40	37.0	36.1	34.2	31.6	29.8	27.4	23.7	19.6	18.9	17.8	16.4	14.6	12.8	11.1	9.65	8.57	8.06	7.95	8.07
45	18.9	18.1	17.5	16.8	15.7	13.4	13.7	13.8	13.2	12.2	10.8	9.39	8.09	7.11	6.57	6.28	6.11	6.04	6.03
50	8.96	8.84	8.79	8.56	7.66	8.50	8.96	8.82	8.02	6.87	6.10	5.87	5.71	5.57	5.44	5.34	5.25	5.18	5.14
55	5.64	5.68	5.51	5.32	5.48	5.70	5.84	5.46	5.29	5.21	5.13	4.97	4.84	4.71	4.66	4.59	4.53	4.46	4.46
60	4.47	4.39	4.23	4.20	4.25	4.27	4.33	4.39	4.34	4.27	4.19	4.04	3.95	3.86	3.87	3.83	3.81	3.76	3.77
65	3.48	3.32	3.36	3.32	3.37	3.39	3.42	3.45	3.42	3.36	3.31	3.23	3.15	3.09	3.09	3.05	3.03	2.99	3.02
70	2.53	2.49	2.58	2.58	2.56	2.60	2.65	2.70	2.75	2.70	2.61	2.51	2.42	2.35	2.31	2.27	2.24	2.24	2.26
75	1.84	1.91	1.89	1.88	1.92	2.05	2.15	2.18	2.20	2.11	1.99	1.94	1.88	1.85	1.82	1.79	1.77	1.76	1.77
80	1.46	1.38	1.41	1.59	1.58	1.61	1.66	1.68	1.70	1.62	1.45	1.43	1.39	1.37	1.34	1.32	1.29	1.29	1.29
85	1.08	1.21	1.21	1.22	0.98	0.97	1.18	1.19	1.19	1.13	0.90	0.93	0.90	0.89	0.87	0.85	0.82	0.81	0.81
90	0.94	0.94	0.90	0.83	0.37	0.35	0.70	0.70	0.69	0.63	0.35	0.42	0.41	0.41	0.40	0.37	0.35	0.34	0.34

C Range: 0 - 360DEG
 C Interval: 5.0DEG
 Test Speed: HIGH
 Temperature:25.3DEG
 Operators:HJL
 Test Date:2022-09-13

γ Range: 0 - 90DEG
 γ Interval: 0.5DEG
 Test System:EVERFINE GO-2000H_V1 SYSTEM V2.0.287
 Humidity:65.0%
 Test Distance:13.693m [K=1.0000]
 Remarks:

LUMINOUS DISTRIBUTION INTENSITY DATA

Model Name: RH19_RH20Single Head	TYPE:	WEIGHT:
SPEC.:	DIM.:	SERIAL No.:2022091301
	SUR.:0.05m	PROTECTION ANGLE:

Table--4 UNIT: cd

C (DEG) γ (DEG)	285	290	295	300	305	310	315	320	325	330	335	340	345	350	355				
0	229	229	229	229	229	229	229	229	229	229	229	229	229	229	229				
5	219	221	222	224	226	227	228	229	230	231	232	233	234	235	235				
10	179	182	187	192	197	203	209	215	220	223	227	228	229	229	230				
15	119	126	134	143	153	164	176	187	195	202	209	214	217	216	215				
20	57.2	65.3	75.6	87.4	100	113	126	139	152	164	171	177	183	185	185				
25	33.9	37.9	42.8	47.9	52.7	59.5	72.8	85.1	96.1	106	114	122	129	135	138				
30	15.6	19.0	23.1	27.6	31.8	35.1	37.4	38.8	47.2	55.4	62.2	67.5	71.8	76.7	78.7				
35	10.6	11.1	11.5	11.5	11.9	16.1	19.1	20.7	20.9	22.2	26.7	29.2	30.6	32.8	34.2				
40	8.46	8.83	9.03	9.02	8.85	8.64	8.45	9.94	10.8	10.6	10.7	11.7	11.8	12.1	12.5				
45	6.21	6.50	6.70	6.80	6.82	6.81	6.73	6.62	6.51	6.89	7.04	7.19	7.37	7.71	7.76				
50	5.19	5.19	5.15	5.13	5.21	5.33	5.36	5.30	5.21	5.20	5.30	5.26	5.39	5.55	5.57				
55	4.50	4.50	4.47	4.45	4.41	4.38	4.32	4.33	4.35	4.36	4.37	4.34	4.34	4.43	4.47				
60	3.80	3.84	3.80	3.79	3.78	3.74	3.67	3.63	3.64	3.67	3.64	3.62	3.57	3.54	3.60				
65	3.05	3.08	3.09	3.10	3.17	3.16	3.07	3.03	3.04	3.00	2.90	2.89	2.87	2.74	2.83				
70	2.30	2.28	2.34	2.31	2.42	2.45	2.45	2.46	2.45	2.40	2.34	2.29	2.28	2.24	2.24				
75	1.78	1.74	1.77	1.71	1.75	1.79	1.82	1.86	1.86	1.97	1.91	1.83	1.71	1.73	1.65				
80	1.30	1.27	1.29	1.26	1.29	1.35	1.36	1.38	1.38	1.45	1.45	1.49	1.41	1.25	1.30				
85	0.82	0.81	0.82	0.81	0.83	0.92	0.94	0.97	0.97	1.02	1.05	1.09	1.10	1.09	0.94				
90	0.34	0.34	0.35	0.35	0.38	0.48	0.52	0.57	0.56	0.59	0.64	0.71	0.72	0.72	0.75				

C Range: 0 - 360DEG	γ Range: 0 - 90DEG
C Interval: 5.0DEG	γ Interval: 0.5DEG
Test Speed: HIGH	Test System:EVERFINE GO-2000H_V1 SYSTEM V2.0.287
Temperature:25.3DEG	Humidity:65.0%
Operators:HJL	Test Distance:13.693m [K=1.0000]
Test Date:2022-09-13	Remarks: