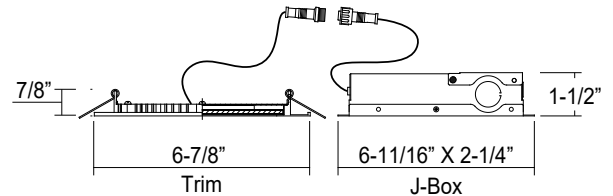
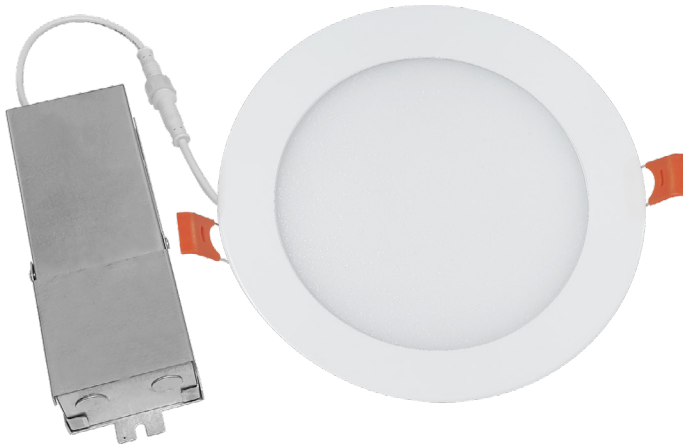


8542-5CCT

120V

Catalog #:		Type
Project:		Date
Prepared by:		

6" LED Ultra-Thin Downlight, 5CCT Selectable



DESCRIPTION

A versatile LED down light solution with edge-lit technology and an off-board driver allow for an ultra slim profile and flexible mounting options. Installation is a snap with the plenum-rated driver box and linkable connector cable — there is no need for a j-box or recessed housing when used for retrofit. The simple spring-loaded retention tabs securely hold each downlight snug to the ceiling.

DESIGN FEATURES

Construction

- Ultra-thin profile
- Durable aluminum construction
- Frosted acrylic lens diffuses glare and maximizes output

Electrical

- 120V-60Hz, AC
- Dimmable TRIAC or ELV, 10-100%
- 50,000 hour projected life
- 120° Beam Angle
- Nominal 12.5W | 1055 lms
- 90 CRI | 5CCT Selectable: 27K, 3K, 35K, 4K, 5K

Installation

- Spring-loaded retention tabs hold downlight snug to ceiling surface, off-board driver/ junction box, poke-in connectors, and linkable connector cable
- IC Rated for direct contact with batt type fiberglass insulation

EM Option

- RP Lighting 4782EM emergency battery pack factory installed
 - Emergency Battery Output = 9W
 - Emergency Lumen Output = 9W x Fixture L/W

Certifications

- cETLus listed for wet location
- IC Rated | Air Tight Rated
- LED Light Source: 5 year limited warranty
- Other Components: 1 year limited warranty

ORDERING GUIDE

Example: 8542WH-90-5CCT

Model #	Finish	CRI	CCT	EM
8542	WH	-90	-5CCT	
8542	WH : White	-90 : 90 CRI	-5CCT : 27K, 3K, 35K, 4K, 5K	: Blank (no EM) -EM : adds -EM option
Accessories				
PF-6	: Mounting Plate (see page 2 for details)			
8542PR	: Plastic Trim Ring (see page 2 for details)			

8542-5CCT

120V

Available Accessory Information

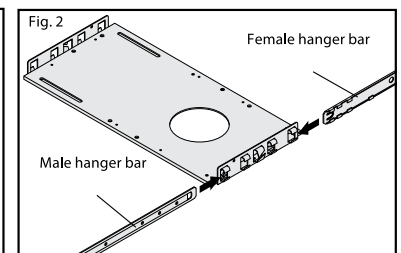
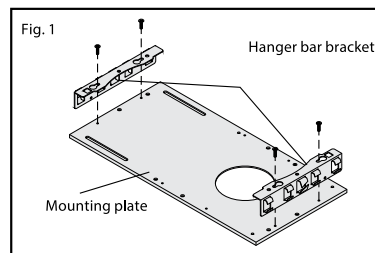
Accessory Mounting Plate Assembly

- **PF-6**
- Includes four 12" bar hanger to allow for easy adjustment and easy installation
- Durable aluminum construction
- Perfect for installing recessed lighting into new construction



New Construction Mounting Plate Assembly:

1. Align hanger bar brackets with mounting holes on the new construction mounting plate and secure in place with mounting screws (Fig. 1).
NOTE: Hanger bars can be installed on long or short side of the new construction mounting plate.
1. Insert both female and male parts of the hanger bars into the bracket from opposite ends (Fig. 2). Make sure that the male part is inserted within the female part and that the end tab is facing downwards.



Accessory Goof Ring

- **8542PR**: Plastic trim ring
- 8-3/8" OD x 6-11/16" ID x 3/4" W

