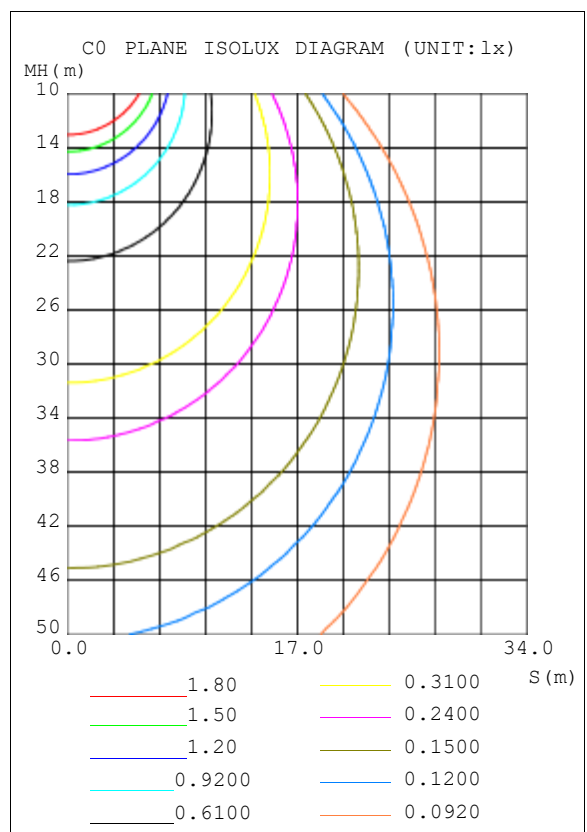
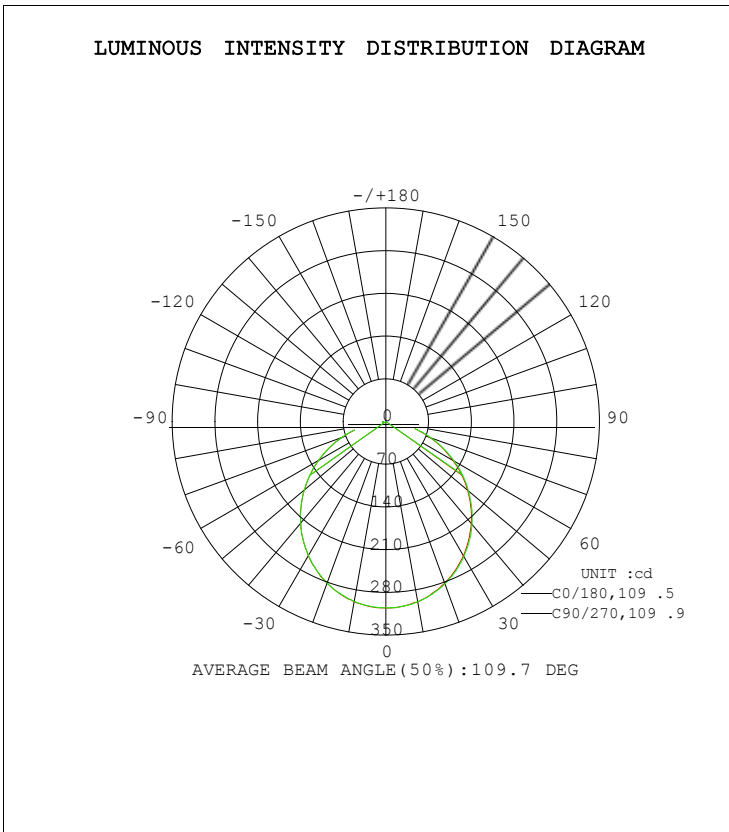


LUMINAIRE PHOTOMETRIC TEST REPORT

Test:U:120.0V I:0.0962A P:11.05W PF:0.9572 Lamp Flux:843.571x1 lm		
NAME:IRP98LED	TYPE:N/A	WEIGHT:N/A
SPEC.:N/A	DIM.: N/A	SERIAL No.:N/A
MFR.:	SUR.:N/A	Shielding Angle:N/A

DATA OF LAMP		PHOTOMETRIC DATA			
MODEL	IRP98LED	Imax (cd)	305.6	S/MH (C0/180)	1.24
NOMINAL POWER (W)		LOR (%)	100.0	S/MH (C90/270)	1.24
RATED VOLTAGE (V)	120	TOTAL FLUX(lm)	843.57	v UP, DN (C0-180)	0.1,49.8
NOMINAL FLUX (lm)	843.571	CIE CLASS	DIRECT	v UP, DN (C180-360)	0.0,50.1
LAMPS INSIDE	1	v up (%)	0.1	CIBSE SHR NOM	1.25
TEST VOLTAGE (V)	120	v down (%)	99.9	CIBSE SHR MAX	1.35



C Range: 0 - 360DEG  
 C Interval: 22.5DEG  
 Test Speed: HIGH  
 Temperature:25.1DEG  
 Operators:Evan  
 Test Date:2022-10-14

γ Range: 0 - 180DEG  
 γ Interval: 1.0DEG  
 Test System:EVERFINE GO-R5000\_V2 SYSTEM V2.0.351  
 Humidity:39%  
 Test Distance:2.532m [K=1.0000]  
 Remarks:

ZONAL FLUX DIAGRAM

ZONAL FLUX DIAGRAM:

γ	C0	C45	C90	C135	C180	C225	C270	C315	γ	● zone	● total	%lum, lamp
10	299.6	298.9	299.1	299.0	299.8	299.5	299.9	299.5	0- 10	28.86	28.86	3.42,3.42
20	282.0	281.2	281.4	281.2	281.9	282.5	283.2	282.3	10- 20	82.37	111.2	13.2,13.2
30	253.9	253.6	253.7	253.3	254.2	255.4	255.8	254.3	20- 30	124.0	235.3	27.9,27.9
40	217.5	217.2	217.3	216.7	217.9	219.2	219.6	218.1	30- 40	148.2	383.4	45.5,45.5
50	174.8	174.6	174.5	173.9	174.7	176.5	176.9	175.2	40- 50	152.1	535.5	63.5,63.5
60	127.2	127.3	127.3	126.7	126.8	128.6	129.0	127.1	50- 60	135.7	671.2	79.6,79.6
70	77.78	77.78	77.72	77.32	77.67	79.11	79.34	77.83	60- 70	101.7	772.9	91.6,91.6
80	30.05	30.54	30.68	30.42	30.74	31.45	31.22	30.21	70- 80	56.87	829.8	98.4,98.4
90	0.0448	0.0459	0.0449	0.0444	0.0135	0.0166	0.0166	0.0156	80- 90	12.75	842.5	99.9,99.9
100	0.0703	0.0720	0.0719	0.0703	0.0293	0.0299	0.0289	0.0297	90-100	0.0425	842.6	99.9,99.9
110	0.0933	0.0941	0.0941	0.0926	0.0559	0.0561	0.0549	0.0557	100-110	0.0654	842.6	99.9,99.9
120	0.1302	0.1328	0.1310	0.1305	0.0919	0.0917	0.0912	0.0909	110-120	0.0905	842.7	99.9,99.9
130	0.2018	0.2031	0.2024	0.2010	0.1335	0.1332	0.1336	0.1334	120-130	0.1228	842.8	99.9,99.9
140	0.3360	0.3360	0.3361	0.3340	0.1745	0.1749	0.1746	0.1747	130-140	0.1597	843.0	99.9,99.9
150	0.5142	0.5140	0.5165	0.5117	0.2221	0.2229	0.2222	0.2220	140-150	0.1960	843.2	100,100
160	0.6475	0.6466	0.6461	0.6459	0.2960	0.2952	0.2934	0.2965	150-160	0.1948	843.4	100,100
170	0.6114	0.6109	0.6104	0.6092	0.3611	0.3600	0.3567	0.3599	160-170	0.1364	843.5	100,100
180	0.5076	0.5093	0.5096	0.5061	0.5109	0.5094	0.5095	0.5074	170-180	0.0472	843.6	100,100
DEG	LUMINOUS INTENSITY: cd									UNIT: lm		

Conical surface Flux(90deg): 460.29 lm

%lum = 54.6%  
 %lamp = 54.6%

Conical surface Flux(120deg): 671.19 lm

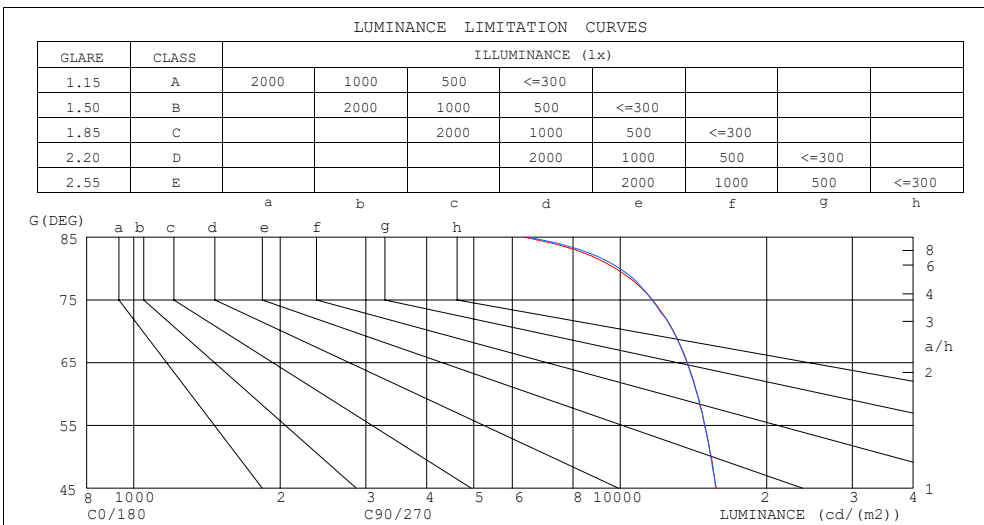
%lum = 79.6%  
 %lamp = 79.6%

C Range: 0 - 360DEG  
 C Interval: 22.5DEG  
 Test Speed: HIGH  
 Temperature:25.1DEG  
 Operators:Evan  
 Test Date:2022-10-14

γ Range: 0 - 180DEG  
 γ Interval: 1 .0DEG  
 Test System: EVERFINE GO-R5000\_V2 SYSTEM V2.0.351  
 Humidity:39%  
 Test Distance:2.532m [K=1.0000]  
 Remarks:

LUMINANCE LIMITATION CURVES

Test:U:120.0V I:0.0962A P:11.05W PF:0.9572 Lamp Flux:843.571x1 lm		
NAME: IRP98LED	TYPE:N/A	WEIGHT:N/A
SPEC.:N/A	DIM.: N/A	SERIAL No.:N/A
MFR.:	SUR.:N/A	Shielding Angle:N/A



LUMINANCE cd/(m2)		
G (DEG)	C0/180	C90/270
85	6336	6466
80	9797	9993
75	11651	11629
70	12873	12853
65	13739	13723
60	14401	14404
55	14936	14920
50	15390	15354
45	15760	15718

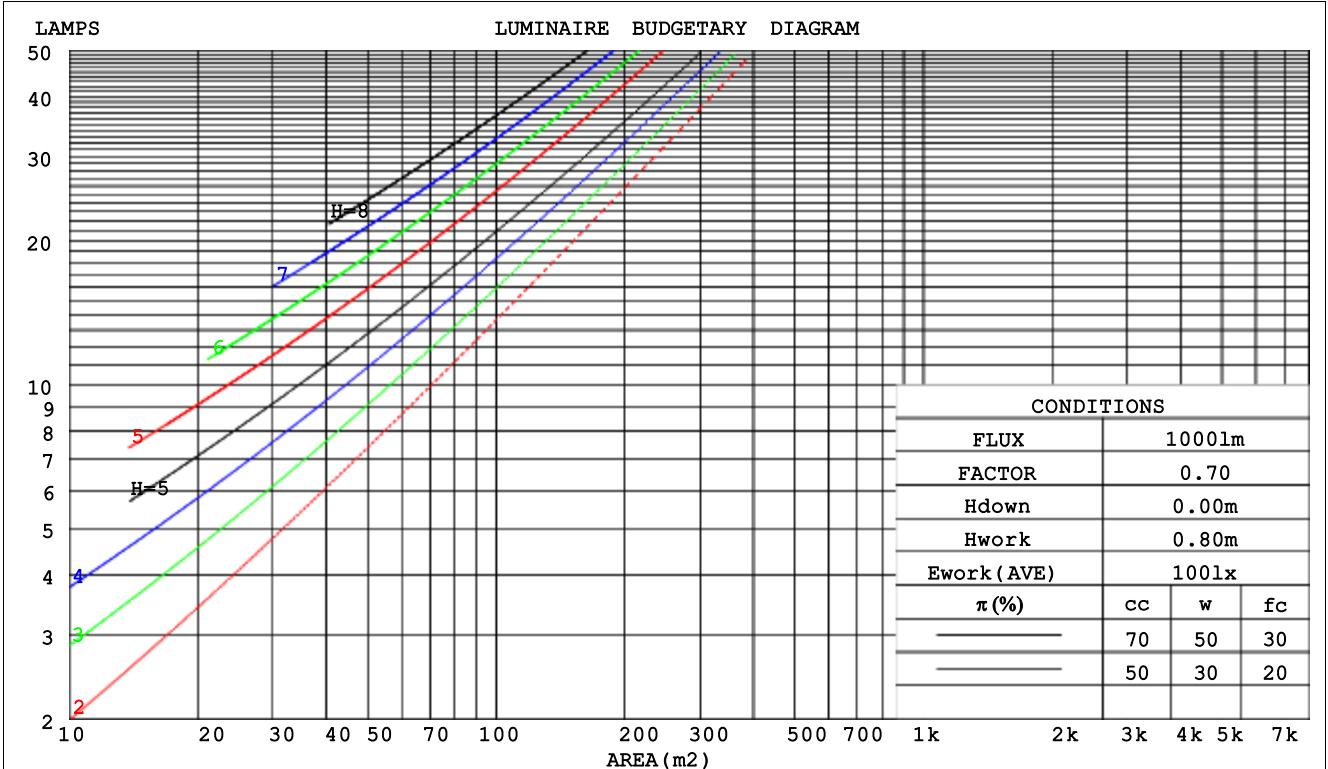
C Range: 0 - 360DEG  
 C Interval: 22.5DEG  
 Test Speed: HIGH  
 Temperature:25.1DEG  
 Operators:Evan  
 Test Date:2022-10-14

γ Range: 0 - 180DEG  
 γ Interval: 1 .0DEG  
 Test System: EVERFINE GO-R5000\_V2 SYSTEM V2.0.351  
 Humidity:39%  
 Test Distance:2.532m [K=1.0000]  
 Remarks:

CU AND LUMINAIRE BUDGETARY ESTIMATE DIAGRAM

Test:U:120.0V I:0.0962A P:11.05W PF:0.9572 Lamp Flux:843.571x1 lm		
NAME: IRP98LED	TYPE:N/A	WEIGHT:N/A
SPEC.:N/A	DIM.: N/A	SERIAL No.:N/A
MFR.:	SUR.:N/A	Shielding Angle:N/A

$\pi$ cc	80%			70%			50%			30%			10%			0
$\pi$ w	50%	30%	10%	50%	30%	10%	50%	30%	10%	50%	30%	10%	50%	30%	10%	0
$\pi$ fc	20%			20%			20%			20%			20%			0
RCR	RCR: Room Cavity Ratio			Coefficients of Utilization(CU)												
0.0	1.19	1.19	1.19	1.16	1.16	1.16	1.11	1.11	1.11	1.06	1.06	1.06	1.02	1.02	1.02	.00
1.0	1.04	.00	.96	1.02	.98	.95	.98	.94	.92	.94	.91	.89	.90	.88	.86	.84
2.0	.91	.84	.78	.89	.83	.77	.85	.80	.76	.82	.78	.74	.79	.75	.72	.70
3.0	.80	.72	.65	.78	.71	.65	.75	.69	.63	.72	.67	.62	.70	.65	.61	.59
4.0	.71	.62	.55	.69	.61	.55	.67	.60	.54	.65	.58	.53	.62	.57	.53	.50
5.0	.63	.54	.48	.62	.54	.47	.60	.53	.47	.58	.51	.46	.56	.50	.46	.44
6.0	.57	.48	.42	.56	.48	.41	.54	.47	.41	.52	.46	.41	.51	.45	.40	.38
7.0	.52	.43	.37	.51	.42	.37	.49	.42	.36	.48	.41	.36	.46	.40	.36	.34
8.0	.47	.39	.33	.46	.38	.33	.45	.38	.32	.44	.37	.32	.43	.37	.32	.30
9.0	.43	.35	.29	.43	.35	.29	.41	.34	.29	.40	.34	.29	.39	.33	.29	.27
10.0	.40	.32	.27	.39	.32	.27	.38	.31	.27	.37	.31	.26	.37	.31	.26	.25



C Range: 0 - 360DEG  
 C Interval: 22.5DEG  
 Test Speed: HIGH  
 Temperature:25.1DEG  
 Operators:Evan  
 Test Date:2022-10-14

$\gamma$  Range: 0 - 180DEG  
 $\gamma$  Interval: 1.0DEG  
 Test System: EVERFINE GO-R5000\_V2 SYSTEM V2.0.351  
 Humidity:39%  
 Test Distance:2.532m [K=1.0000]  
 Remarks:

WEC AND CCEC

Test:U:120.0V I:0.0962A P:11.05W PF:0.9572 Lamp Flux:843.571x1 lm		
NAME: IRP98LED	TYPE:N/A	WEIGHT:N/A
SPEC.:N/A	DIM.: N/A	SERIAL No.:N/A
MFR.:	SUR.:N/A	Shielding Angle:N/A

$\pi$ CC	80%			70%			50%			30%			10%			0
$\pi$ W	50%	30%	10%	50%	30%	10%	50%	30%	10%	50%	30%	10%	50%	30%	10%	0
$\pi$ fc	20%			20%			20%			20%			20%			0
RCR	RCR:Room Cavity Ratio						Wall Exitance Coefficients(WEC)									
0.0																
1.0	.304	.173	.055	.296	.169	.054	.283	.162	.052	.271	.156	.050	.260	.150	.049	
2.0	.287	.158	.048	.281	.155	.048	.270	.150	.047	.259	.145	.045	.249	.141	.044	
3.0	.267	.142	.043	.261	.140	.042	.251	.136	.041	.241	.132	.041	.232	.129	.040	
4.0	.247	.128	.038	.242	.127	.037	.233	.123	.037	.224	.120	.036	.216	.117	.036	
5.0	.228	.116	.034	.224	.115	.034	.216	.112	.033	.208	.110	.033	.201	.108	.032	
6.0	.212	.106	.030	.208	.105	.030	.201	.103	.030	.194	.101	.030	.188	.099	.029	
7.0	.198	.098	.028	.194	.097	.028	.188	.095	.027	.182	.093	.027	.176	.091	.027	
8.0	.185	.090	.025	.182	.089	.025	.176	.088	.025	.170	.086	.025	.165	.085	.025	
9.0	.173	.084	.023	.170	.083	.023	.165	.082	.023	.160	.080	.023	.156	.079	.023	
10.0	.163	.078	.022	.160	.077	.022	.156	.076	.021	.151	.075	.021	.147	.074	.021	

$\pi$ CC	80%			70%			50%			30%			10%			0
$\pi$ W	50%	30%	10%	50%	30%	10%	50%	30%	10%	50%	30%	10%	50%	30%	10%	0
$\pi$ fc	20%			20%			20%			20%			20%			0
RCR	RCR:Room Cavity Ratio						Ceiling Cavity Exitance Coefficients(CCEC)									
0.0	.191	.191	.191	.164	.164	.164	.112	.112	.112	.064	.064	.064	.021	.021	.021	
1.0	.181	.157	.136	.155	.135	.117	.106	.093	.081	.061	.054	.047	.020	.017	.015	
2.0	.173	.133	.099	.148	.114	.086	.101	.079	.060	.058	.046	.035	.019	.015	.011	
3.0	.165	.115	.076	.141	.099	.066	.097	.069	.046	.056	.040	.027	.018	.013	.009	
4.0	.157	.102	.060	.135	.088	.052	.093	.061	.036	.054	.036	.022	.017	.012	.007	
5.0	.150	.091	.048	.129	.079	.042	.089	.055	.030	.051	.032	.018	.017	.011	.006	
6.0	.143	.083	.040	.123	.072	.035	.085	.050	.025	.049	.030	.015	.016	.010	.005	
7.0	.136	.076	.034	.117	.066	.030	.081	.046	.021	.047	.027	.013	.015	.009	.004	
8.0	.129	.070	.030	.111	.061	.026	.077	.043	.018	.045	.025	.011	.015	.008	.004	
9.0	.123	.065	.026	.106	.057	.023	.074	.040	.016	.043	.024	.010	.014	.008	.003	
10.0	.118	.061	.024	.102	.053	.021	.070	.037	.015	.041	.022	.009	.013	.007	.003	

C Range: 0 - 360DEG  
 C Interval: 22.5DEG  
 Test Speed: HIGH  
 Temperature:25.1DEG  
 Operators:Evan  
 Test Date:2022-10-14

$\gamma$  Range: 0 - 180DEG  
 $\gamma$  Interval: 1 .0DEG  
 Test System: EVERFINE GO-R5000\_V2 SYSTEM V2.0.351  
 Humidity:39%  
 Test Distance:2.532m [K=1.0000]  
 Remarks:

UGR(Unified Glare Rating) Table

Test:U:120.0V I:0.0962A P:11.05W PF:0.9572 Lamp Flux:843.571x1 lm										
NAME: IRP98LED					TYPE:N/A			WEIGHT:N/A		
SPEC.:N/A					DIM.: N/A			SERIAL No.:N/A		
MFR.:					SUR.:N/A			Shielding Angle:N/A		
ceiling/cavity	0.7	0.7	0.5	0.5	0.3	0.7	0.7	0.5	0.5	0.3
walls	0.5	0.3	0.5	0.3	0.3	0.5	0.3	0.5	0.3	0.3
working plane	0.2	0.2	0.2	0.2	0.2	0.2	0.2	0.2	0.2	0.2
Room dimensions	Viewed crosswise					Viewed endwise				
x = 2H y = 2H	22.2	23.7	22.5	23.9	24.2	22.2	23.7	22.5	23.9	24.2
3H	23.7	25.1	24.0	25.3	25.6	23.7	25.1	24.0	25.3	25.6
4H	24.2	25.6	24.6	25.8	26.1	24.3	25.6	24.6	25.8	26.1
6H	24.6	25.9	24.9	26.1	26.4	24.6	25.9	25.0	26.1	26.4
8H	24.7	25.9	25.0	26.2	26.5	24.7	25.9	25.1	26.2	26.5
12H	24.7	25.9	25.1	26.2	26.5	24.8	25.9	25.1	26.2	26.5
4H 2H	22.8	24.2	23.1	24.4	24.7	22.8	24.2	23.1	24.4	24.7
3H	24.5	25.6	24.8	25.9	26.2	24.5	25.6	24.8	25.9	26.2
4H	25.1	26.2	25.5	26.5	26.9	25.1	26.2	25.5	26.5	26.9
6H	25.6	26.6	26.0	26.9	27.3	25.6	26.6	26.0	26.9	27.3
8H	25.8	26.6	26.2	27.0	27.4	25.8	26.7	26.2	27.0	27.4
12H	25.8	26.6	26.2	27.0	27.4	25.8	26.6	26.3	27.0	27.4
8H 4H	25.4	26.3	25.8	26.6	27.0	25.4	26.3	25.8	26.6	27.0
6H	26.0	26.7	26.4	27.1	27.6	26.0	26.7	26.5	27.2	27.6
8H	26.2	26.8	26.7	27.3	27.7	26.2	26.9	26.7	27.3	27.8
12H	26.3	26.9	26.8	27.3	27.8	26.3	26.9	26.8	27.3	27.8
12H 4H	25.4	26.2	25.8	26.6	27.0	25.4	26.2	25.8	26.6	27.0
6H	26.0	26.7	26.5	27.1	27.6	26.1	26.7	26.5	27.1	27.6
8H	26.3	26.8	26.7	27.3	27.7	26.3	26.9	26.8	27.3	27.8
Variations with the observer position at spacings:										
S = 1.0H	+ 0.2 / - 0.2					+ 0.2 / - 0.2				
1.5H	+ 0.2 / - 0.3					+ 0.2 / - 0.3				
2.0H	+ 0.2 / - 0.3					+ 0.2 / - 0.3				

CIE Pub.117 Corrected 843.6 lm Total Lamp Luminous Flux. (8log(F/F0) = -0.6)

C Range: 0 - 360DEG  
 C Interval: 22.5DEG  
 Test Speed: HIGH  
 Temperature:25.1DEG  
 Operators:Evan  
 Test Date:2022-10-14

γ Range: 0 - 180DEG  
 γ Interval: 1 .0DEG  
 Test System: EVERFINE GO-R5000\_V2 SYSTEM V2.0.351  
 Humidity:39%  
 Test Distance:2.532m [K=1.0000]  
 Remarks:

UTILIZATION FACTORS TABLE

Test:U:120.0V I:0.0962A P:11.05W PF:0.9572 Lamp Flux:843.571x1 lm		
NAME: IRP98LED	TYPE:N/A	WEIGHT:N/A
SPEC.:N/A	DIM.: N/A	SERIAL No.:N/A
MFR.:	SUR.:N/A	Shielding Angle:N/A

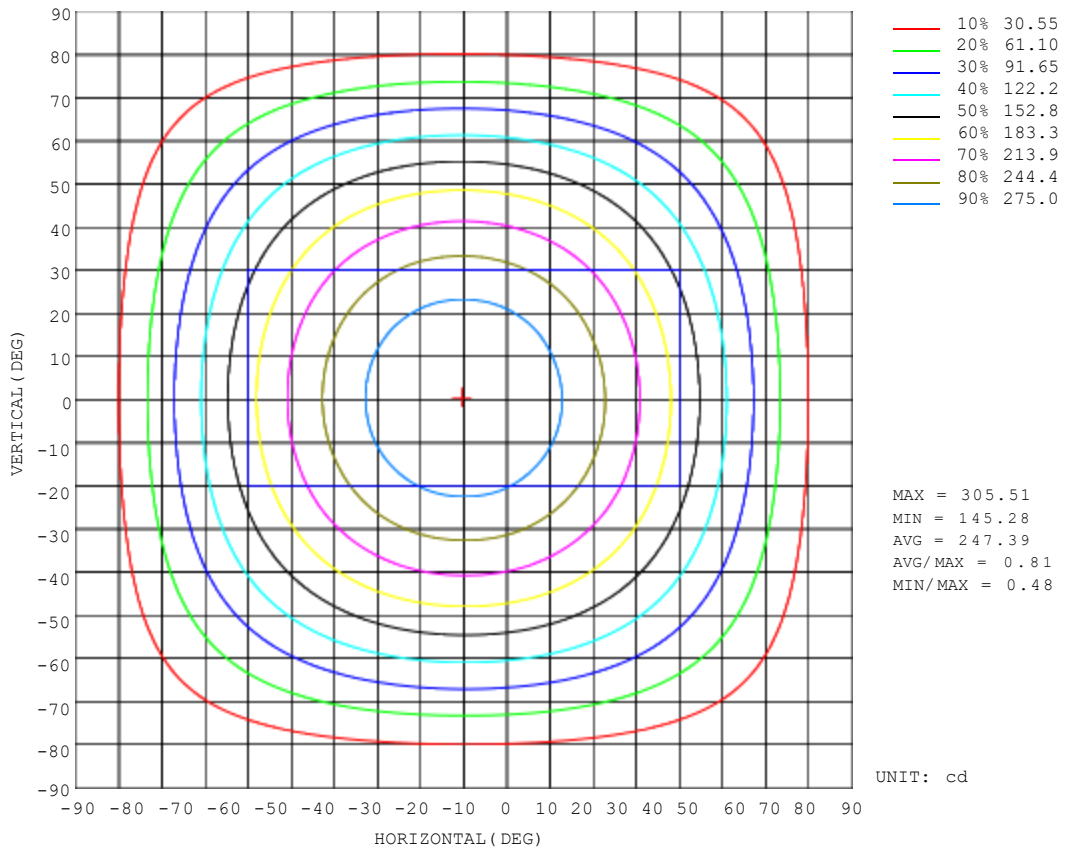
REFLECTANCE										
Ceiling	0.8	0.8	0.8	0.7	0.7	0.7	0.5	0.5	0.5	0
Walls	0.7	0.5	0.3	0.7	0.5	0.3	0.7	0.5	0.3	0
Working plane	0.2	0.2	0.2	0.2	0.2	0.2	0.2	0.2	0.2	0
ROOM INDEX	UTILIZATION FACTORS (PERCENT) k(RI) x RCR = 5									
k = 0.60	58	46	40	57	46	39	56	46	39	33
0.80	68	57	49	67	56	49	65	55	49	42
1.00	76	65	58	75	65	58	73	66	57	50
1.25	84	73	66	82	72	66	79	71	65	58
1.50	89	79	72	87	78	71	84	76	70	63
2.00	95	87	81	93	86	80	90	83	78	70
2.50	99	92	86	97	90	85	93	87	83	75
3.00	103	96	90	100	94	89	96	91	87	79
4.00	106	101	96	104	99	95	100	96	92	83
5.00	109	104	100	106	102	99	102	99	95	86
ROOM INDEX	UF(total)									Direct
According to DIN EN 13032-2 2004			Suspended				SHRNOM = 1.25			

C Range: 0 - 360DEG  
 C Interval: 22.5DEG  
 Test Speed: HIGH  
 Temperature:25.1DEG  
 Operators:Evan  
 Test Date:2022-10-14

γ Range: 0 - 180DEG  
 γ Interval: 1 .0DEG  
 Test System: EVERFINE GO-R5000\_V2 SYSTEM V2.0.351  
 Humidity:39%  
 Test Distance:2.532m [K=1.0000]  
 Remarks:

ISOCANDELA DIAGRAM

Test:U:120.0V I:0.0962A P:11.05W PF:0.9572 Lamp Flux:843.571x1 lm		
NAME: 1RP98LED	TYPE:N/A	WEIGHT:N/A
SPEC.:N/A	DIM.: N/A	SERIAL No.:N/A
MFR.:	SUR.:N/A	Shielding Angle:N/A



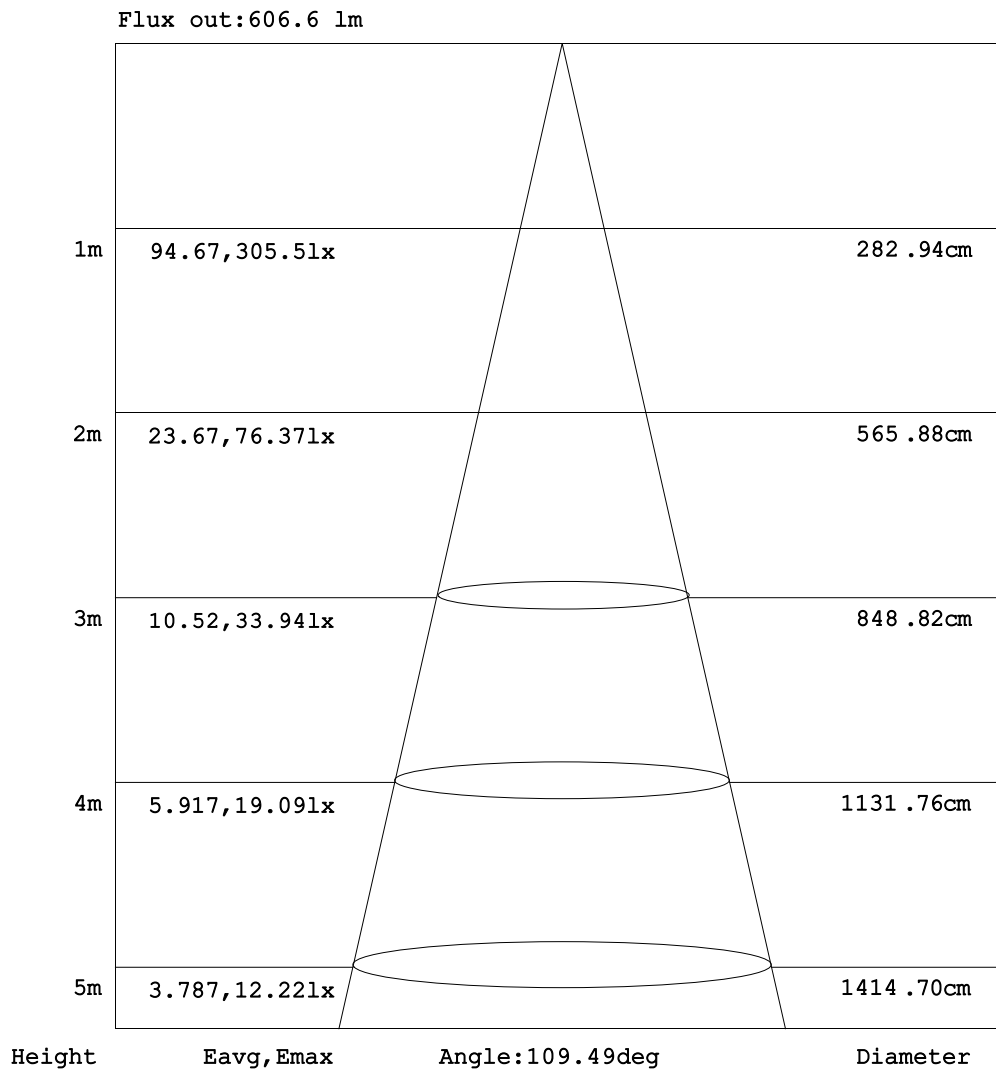
C Range: 0 - 360DEG  
 C Interval: 22.5DEG  
 Test Speed: HIGH  
 Temperature:25.1DEG  
 Operators:Evan  
 Test Date:2022-10-14

γ Range: 0 - 180DEG  
 γ Interval: 1.0DEG  
 Test System: EVERFINE GO-R5000\_V2 SYSTEM V2.0.351  
 Humidity:39%  
 Test Distance:2.532m [K=1.0000]  
 Remarks:



AAI Figure

Test:U:120.0V I:0.0962A P:11.05W PF:0.9572 Lamp Flux:843.571x1 lm		
NAME: IRP98LED	TYPE:N/A	WEIGHT:N/A
SPEC.:N/A	DIM.: N/A	SERIAL No.:N/A
MFR.:	SUR.:N/A	Shielding Angle:N/A



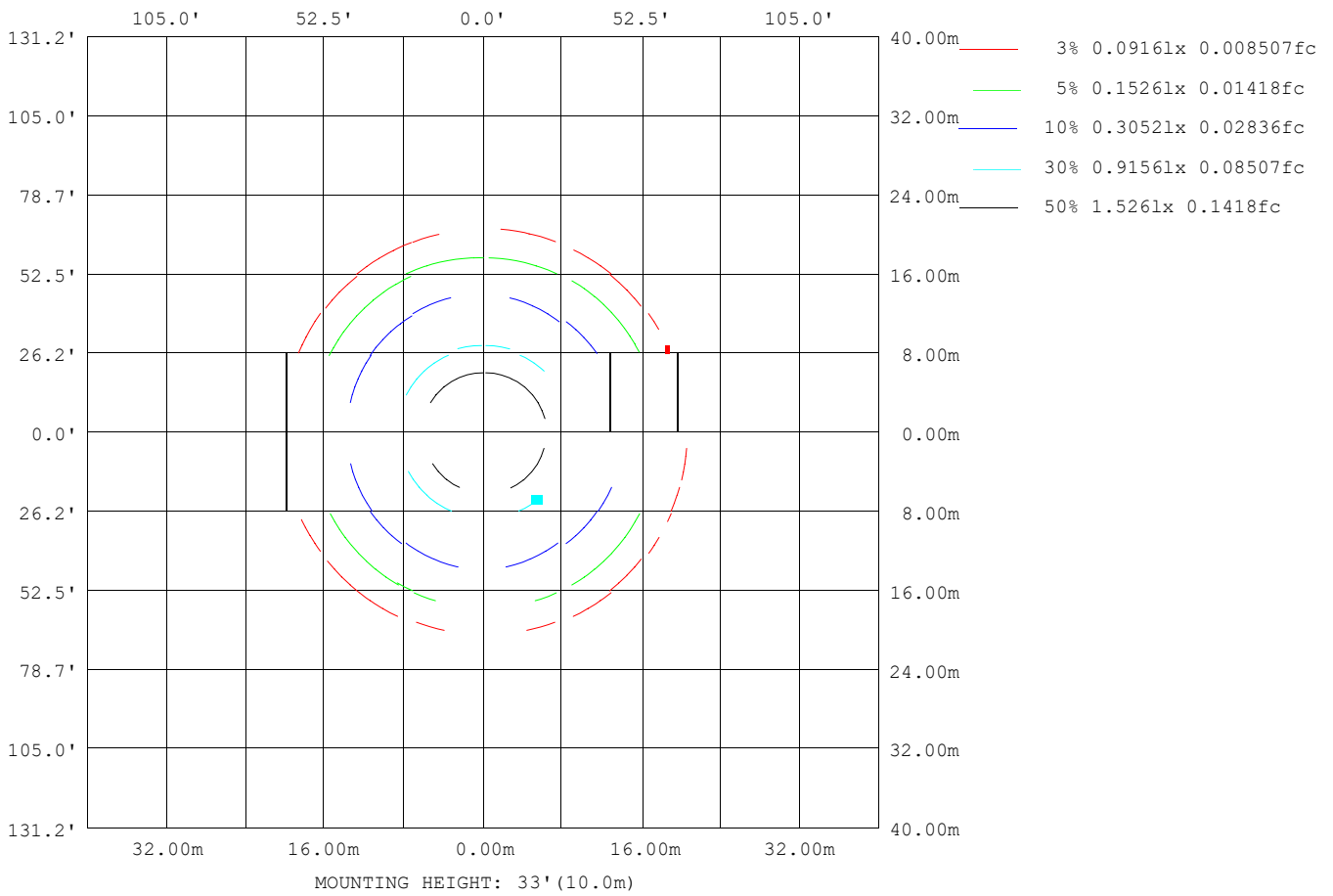
Note:The Curves indicate the illuminated area and the average illumination when the luminaire is at different distance.

C Range: 0 - 360DEG  
 C Interval: 22.5DEG  
 Test Speed: HIGH  
 Temperature:25.1DEG  
 Operators:Evan  
 Test Date:2022-10-14

γ Range: 0 - 180DEG  
 γ Interval: 1.0DEG  
 Test System: EVERFINE GO-R5000\_V2 SYSTEM V2.0.351  
 Humidity:39%  
 Test Distance:2.532m [K=1.0000]  
 Remarks:

ISOLUX DIAGRAM

Test:U:120.0V I:0.0962A P:11.05W PF:0.9572 Lamp Flux:843.571x1 lm		
NAME: IRP98LED	TYPE:N/A	WEIGHT:N/A
SPEC.:N/A	DIM.: N/A	SERIAL No.:N/A
MFR.:	SUR.:N/A	Shielding Angle:N/A



C Range: 0 - 360DEG  
 C Interval: 22.5DEG  
 Test Speed: HIGH  
 Temperature:25.1DEG  
 Operators:Evan  
 Test Date:2022-10-14

Y Range: 0 - 180DEG  
 Y Interval: 1 .0DEG  
 Test System: EVERFINE GO-R5000\_V2 SYSTEM V2.0.351  
 Humidity:39%  
 Test Distance:2.532m [K=1.0000]  
 Remarks:

## LED Avg.L Report

Test:U:120.0V I:0.0962A P:11.05W PF:0.9572 Lamp Flux:843.571x1 lm		
NAME: 1RP98LED	TYPE:N/A	WEIGHT:N/A
SPEC.:N/A	DIM.: N/A	SERIAL No.:N/A
MFR.:	SUR.:N/A	Shielding Angle:N/A

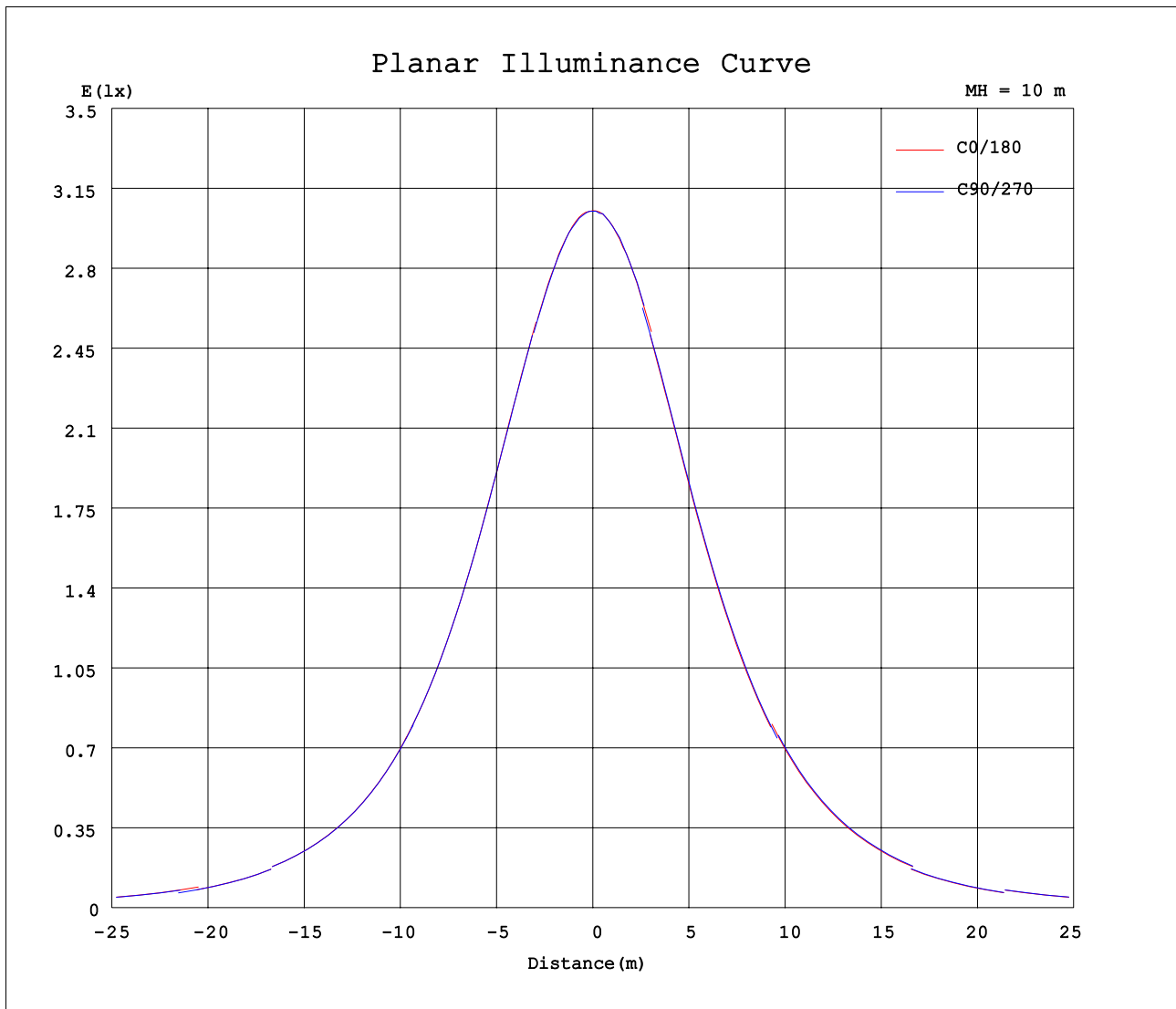
AvgL	cd/m2
L 0~180 (65) av	13724
L 0~180 (75) av	11685
L 0~180 (85) av	6618
L 90~270 (65) av	13851
L 90~270 (75) av	11818
L 90~270 (85) av	6756
L 45 (65) av	13771
L 45 (75) av	11736
L 45 (85) av	6701

Standard: GB/T 29293-2012

C Range: 0 - 360DEG  
 C Interval: 22.5DEG  
 Test Speed: HIGH  
 Temperature:25.1DEG  
 Operators:Evan  
 Test Date:2022-10-14

γ Range: 0 - 180DEG  
 γ Interval: 1 .0DEG  
 Test System: EVERFINE GO-R5000\_V2 SYSTEM V2.0.351  
 Humidity:39%  
 Test Distance:2.532m [K=1.0000]  
 Remarks:

Planar Illuminance Curve



C Range: 0 - 360DEG  
 C Interval: 22.5DEG  
 Test Speed: HIGH  
 Temperature:25.1DEG  
 Operators:Evan  
 Test Date:2022-10-14

Y Range: 0 - 180DEG  
 Y Interval: 1 .0DEG  
 Test System: EVERFINE GO-R5000\_V2 SYSTEM V2.0.351  
 Humidity:39%  
 Test Distance:2.532m [K=1.0000]  
 Remarks:

LUMINOUS DISTRIBUTION INTENSITY DATA

Test:U:120.0V I:0.0962A P:11.05W PF:0.9572 Lamp Flux:843.571x1 lm		
NAME: IRP08LED	TYPE:N/A	WEIGHT:N/A
SPEC.:N/A	DIM.: N/A	SERIAL No.:N/A
MFR.:	SUR.:N/A	Shielding Angle:N/A

Table--1

UNIT: cd

C (DEG)	0	22.5	45	67.5	90	112.5	135	157.5	180	202.5	225	247.5	270	292.5	315	337.5			
0	305	305	305	305	305	305	305	305	305	305	305	305	305	305	305	305			
5	304	304	304	304	304	304	303	303	304	304	304	304	304	304	303	304			
10	300	299	299	299	299	299	299	299	300	300	300	300	300	299	299	299			
15	292	292	292	292	292	292	291	292	292	292	293	293	293	293	292	292			
20	282	282	281	282	281	281	281	282	282	282	283	283	283	282	282	281			
25	269	269	268	269	269	268	268	269	269	270	270	271	271	270	269	269			
30	254	254	254	254	254	253	253	254	254	255	255	256	256	255	254	254			
35	237	237	236	237	236	236	236	236	237	237	238	239	238	238	237	236			
40	217	218	217	217	217	217	217	217	218	218	219	220	220	219	218	217			
45	197	197	197	197	196	196	196	196	197	198	198	199	199	198	197	197			
50	175	175	175	175	174	174	174	174	175	176	176	177	177	176	175	174			
55	151	151	151	152	151	151	151	151	152	153	154	154	154	153	152	151			
60	127	127	127	127	127	127	127	127	127	128	129	129	129	128	127	126			
65	103	103	103	103	103	102	102	102	102	103	104	105	104	103	103	102			
70	77.8	77.6	77.8	77.9	77.7	77.4	77.3	77.7	77.7	78.3	79.1	79.6	79.3	78.5	77.8	77.3			
75	53.3	53.2	53.3	53.6	53.2	53.0	52.9	53.2	53.6	54.2	54.9	55.2	54.8	54.1	53.6	53.1			
80	30.1	30.2	30.5	30.8	30.7	30.5	30.4	30.5	30.7	31.1	31.4	31.5	31.2	30.7	30.2	29.9			
85	9.76	9.74	9.87	9.96	9.96	10.0	10.1	10.3	10.6	10.9	11.0	11.0	10.8	10.5	10.2	10.1			
90	0.04	0.05	0.05	0.05	0.04	0.04	0.04	0.04	0.01	0.01	0.02	0.02	0.02	0.02	0.02	0.01			
95	0.06	0.06	0.06	0.06	0.06	0.06	0.06	0.06	0.02	0.02	0.02	0.02	0.02	0.02	0.02	0.02			
100	0.07	0.07	0.07	0.07	0.07	0.07	0.07	0.07	0.03	0.03	0.03	0.03	0.03	0.03	0.03	0.03			
105	0.08	0.08	0.08	0.08	0.08	0.08	0.08	0.08	0.04	0.04	0.04	0.04	0.04	0.04	0.04	0.04			
110	0.09	0.10	0.09	0.09	0.09	0.09	0.09	0.09	0.06	0.06	0.06	0.06	0.06	0.05	0.06	0.06			
115	0.11	0.11	0.11	0.11	0.11	0.11	0.11	0.11	0.07	0.07	0.07	0.07	0.07	0.07	0.07	0.07			
120	0.13	0.13	0.13	0.13	0.13	0.13	0.13	0.13	0.09	0.09	0.09	0.09	0.09	0.09	0.09	0.09			
125	0.16	0.16	0.16	0.16	0.16	0.16	0.16	0.16	0.11	0.11	0.11	0.11	0.11	0.11	0.11	0.11			
130	0.20	0.20	0.20	0.20	0.20	0.20	0.20	0.20	0.13	0.13	0.13	0.13	0.13	0.13	0.13	0.13			
135	0.26	0.26	0.26	0.26	0.26	0.26	0.26	0.26	0.15	0.15	0.15	0.15	0.15	0.15	0.15	0.15			
140	0.34	0.34	0.34	0.34	0.34	0.34	0.33	0.33	0.17	0.18	0.17	0.17	0.17	0.17	0.17	0.18			
145	0.43	0.43	0.43	0.43	0.43	0.43	0.43	0.43	0.20	0.20	0.20	0.20	0.20	0.20	0.20	0.20			
150	0.51	0.51	0.51	0.52	0.52	0.51	0.51	0.51	0.22	0.22	0.22	0.22	0.22	0.22	0.22	0.22			
155	0.59	0.60	0.59	0.59	0.59	0.59	0.59	0.59	0.26	0.26	0.26	0.26	0.26	0.26	0.26	0.26			
160	0.65	0.65	0.65	0.65	0.65	0.65	0.65	0.65	0.30	0.30	0.30	0.29	0.29	0.29	0.30	0.30			
165	0.64	0.64	0.64	0.64	0.64	0.64	0.64	0.64	0.33	0.33	0.33	0.32	0.32	0.32	0.33	0.33			
170	0.61	0.61	0.61	0.61	0.61	0.61	0.61	0.61	0.36	0.36	0.36	0.36	0.36	0.36	0.36	0.36			
175	0.58	0.58	0.58	0.58	0.58	0.58	0.58	0.58	0.43	0.43	0.43	0.43	0.43	0.43	0.43	0.43			
180	0.51	0.51	0.51	0.51	0.51	0.51	0.51	0.51	0.51	0.51	0.51	0.51	0.51	0.51	0.51	0.51			

C Range: 0 - 360DEG  
 C Interval: 22.5DEG  
 Test Speed: HIGH  
 Temperature:25.1DEG  
 Operators:Evan  
 Test Date:2022-10-14

γ Range: 0 - 180DEG  
 γ Interval: 1 .0DEG  
 Test System: EVERFINE GO-R5000\_V2 SYSTEM V2.0.351  
 Humidity:39%  
 Test Distance:2.532m [K=1.0000]  
 Remarks: