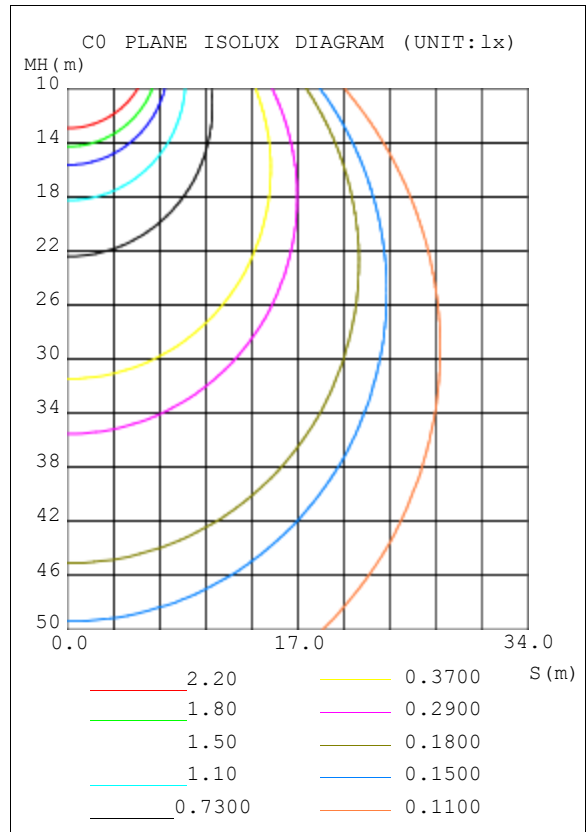
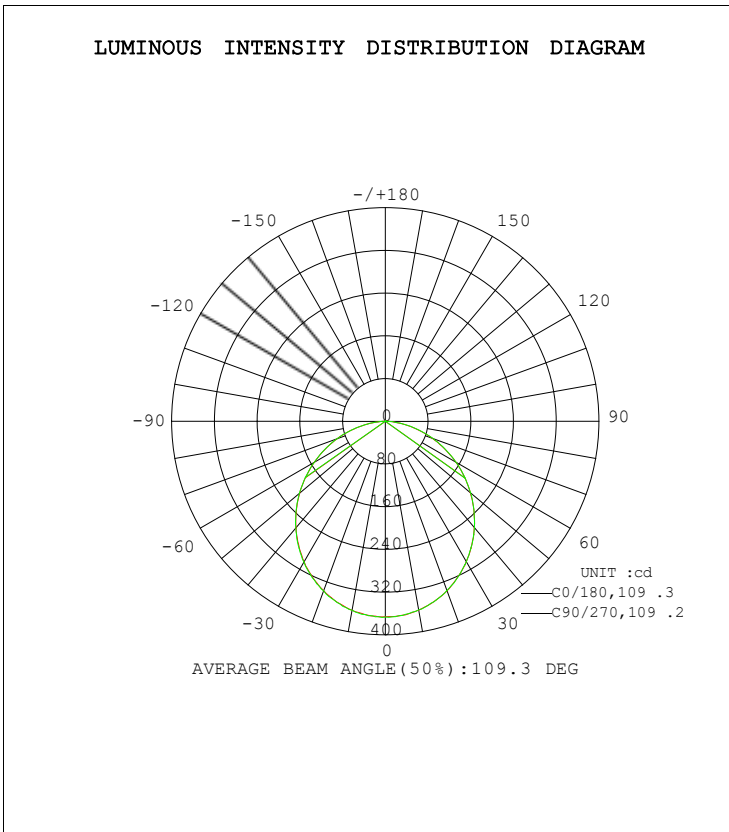


LUMINAIRE PHOTOMETRIC TEST REPORT

Test:U:120.1V I:0.1035A P:11.98W PF:0.9635 Lamp Flux:1012.29x1 lm		
NAME: 1RP69-1LED	TYPE:N/A	WEIGHT:N/A
SPEC.:N/A	DIM.: N/A	SERIAL No.:N/A
MFR.: Royal Pacific	SUR.:N/A	Shielding Angle:N/A

DATA OF LAMP		PHOTOMETRIC DATA			
MODEL	1RP69-1LED	Imax (cd)	367.2	S/MH (C0/180)	1.24
NOMINAL POWER (W)	12	LOR (%)	100.0	S/MH (C90/270)	1.23
RATED VOLTAGE (V)	120	TOTAL FLUX(lm)	1012.3	v UP, DN (C0-180)	0.1,50.3
NOMINAL FLUX (lm)	1012.29	CIE CLASS	DIRECT	v UP, DN (C180-360)	0.0,49.6
LAMPS INSIDE	1	v up (%)	0.1	CIBSE SHR NOM	1.25
TEST VOLTAGE (V)	120	v down (%)	99.9	CIBSE SHR MAX	1.35



C Range: 0 - 360DEG
 C Interval: 22.5DEG
 Test Speed: HIGH
 Temperature:25.0DEG
 Operators:Carl
 Test Date:2023-04-07

γ Range: 0 - 180DEG
 γ Interval: 1 .0DEG
 Test System:EVERFINE GO-R5000_V2 SYSTEM V2.0.351
 Humidity:42%
 Test Distance:2.532m [K=1.0000]
 Remarks:

ZONAL FLUX DIAGRAM

ZONAL FLUX DIAGRAM:

γ	C0	C45	C90	C135	C180	C225	C270	C315	γ	● zone	● total	%lum, lamp
10	359.5	358.3	359.3	359.6	359.2	357.7	358.6	358.7	0- 10	34.61	34.61	3.42,3.42
20	337.9	337.1	338.2	338.5	337.5	336.0	337.0	336.7	10- 20	98.70	133.3	13.2,13.2
30	304.2	303.8	304.8	304.7	303.5	301.8	303.0	302.7	20- 30	148.3	281.6	27.8,27.8
40	260.5	260.0	260.9	261.1	259.3	257.7	258.9	258.9	30- 40	176.8	458.5	45.3,45.3
50	209.5	208.8	210.2	210.5	207.9	206.4	207.6	207.9	40- 50	181.2	639.6	63.2,63.2
60	153.7	153.3	154.3	154.7	152.3	151.1	152.2	152.6	50- 60	162.0	801.6	79.2,79.2
70	95.99	95.80	97.08	97.37	93.93	93.09	94.24	94.63	60- 70	122.7	924.3	91.3,91.3
80	38.79	38.92	40.06	40.24	37.61	37.20	38.08	38.14	70- 80	70.19	994.5	98.2,98.2
90	0.0612	0.0619	0.0642	0.0647	0.0170	0.0162	0.0154	0.0168	80- 90	16.64	1011	99.9,99.9
100	0.0804	0.0804	0.0808	0.0813	0.0336	0.0339	0.0342	0.0336	90-100	0.0489	1011	99.9,99.9
110	0.1058	0.1059	0.1062	0.1066	0.0640	0.0646	0.0653	0.0651	100-110	0.0750	1011	99.9,99.9
120	0.1457	0.1452	0.1467	0.1463	0.1060	0.1061	0.1066	0.1071	110-120	0.1032	1011	99.9,99.9
130	0.2211	0.2208	0.2215	0.2208	0.1523	0.1529	0.1537	0.1538	120-130	0.1383	1011	99.9,99.9
140	0.3575	0.3571	0.3570	0.3566	0.1964	0.1971	0.1981	0.1979	130-140	0.1757	1012	99.9,99.9
150	0.5462	0.5464	0.5459	0.5456	0.2441	0.2453	0.2456	0.2457	140-150	0.2118	1012	100,100
160	0.6899	0.6916	0.6913	0.6898	0.3207	0.3197	0.3234	0.3212	150-160	0.2092	1012	100,100
170	0.6574	0.6563	0.6595	0.6536	0.3917	0.3901	0.3933	0.3920	160-170	0.1473	1012	100,100
180	0.5508	0.5424	0.5481	0.5484	0.5501	0.5474	0.5481	0.5494	170-180	0.0509	1012	100,100
DEG	LUMINOUS INTENSITY: cd									UNIT: lm		

Conical surface Flux(90deg): 550.04 lm

%lum = 54.3%
 %lamp = 54.3%

Conical surface Flux(120deg): 801.6 lm

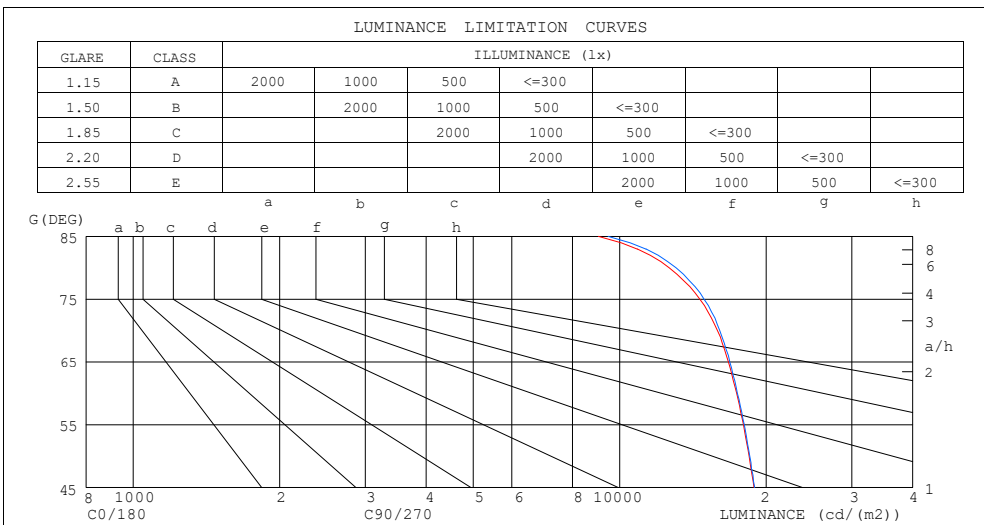
%lum = 79.2%
 %lamp = 79.2%

C Range: 0 - 360DEG
 C Interval: 22.5DEG
 Test Speed: HIGH
 Temperature:25.0DEG
 Operators:Carl
 Test Date:2023-04-07

γ Range: 0 - 180DEG
 γ Interval: 1 .0DEG
 Test System: EVERFINE GO-R5000_V2 SYSTEM V2.0.351
 Humidity:42%
 Test Distance:2.532m [K=1.0000]
 Remarks:

LUMINANCE LIMITATION CURVES

Test:U:120.1V I:0.1035A P:11.98W PF:0.9635 Lamp Flux:1012.29x1 lm		
NAME: 1RP69-1LED	TYPE:N/A	WEIGHT:N/A
SPEC.:N/A	DIM.: N/A	SERIAL No.:N/A
MFR.: Royal Pacific	SUR.:N/A	Shielding Angle:N/A



LUMINANCE cd/(m2)		
G (DEG)	C0/180	C90/270
85	9040	9471
80	12636	13055
75	14604	14898
70	15876	16060
65	16714	16828
60	17388	17458
55	17953	18028
50	18432	18502
45	18875	18941

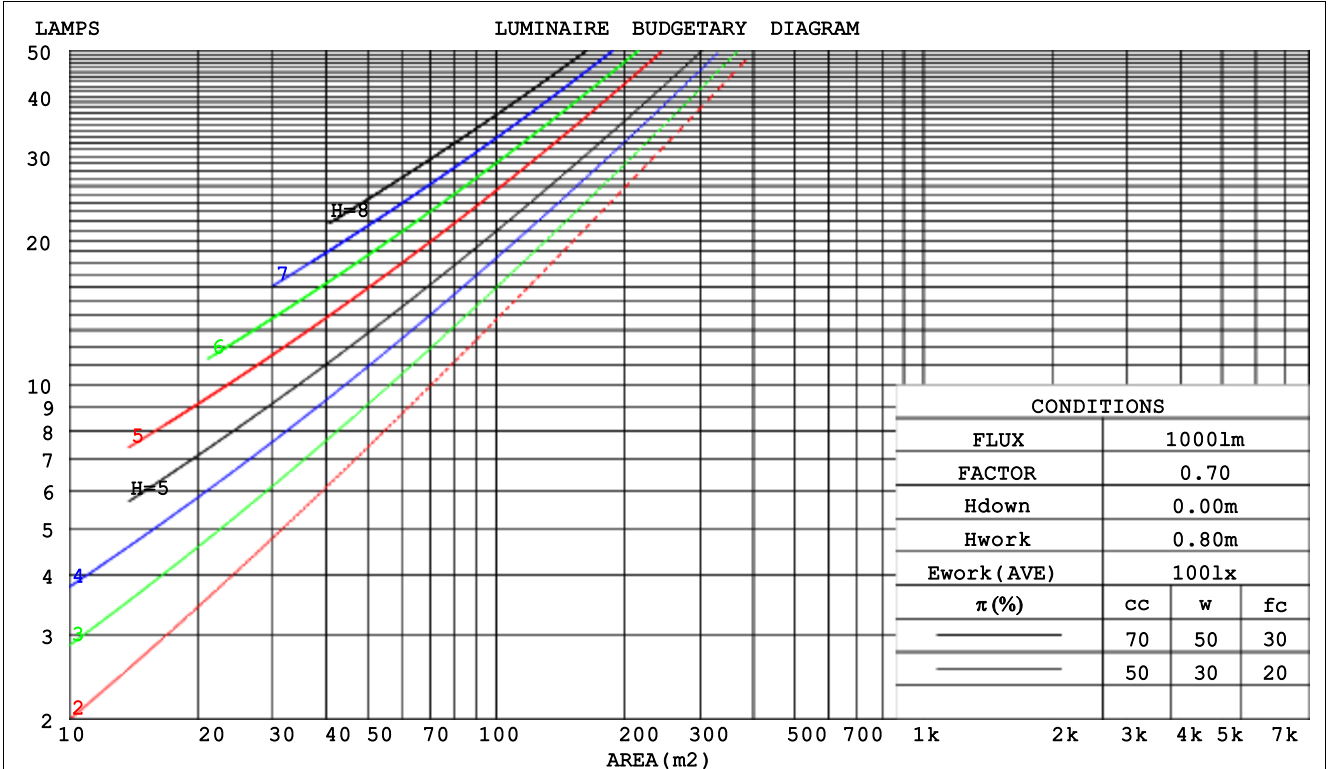
C Range: 0 - 360DEG
 C Interval: 22.5DEG
 Test Speed: HIGH
 Temperature:25.0DEG
 Operators:Carl
 Test Date:2023-04-07

γ Range: 0 - 180DEG
 γ Interval: 1 .0DEG
 Test System: EVERFINE GO-R5000_V2 SYSTEM V2.0.351
 Humidity:42%
 Test Distance:2.532m [K=1.0000]
 Remarks:

CU AND LUMINAIRE BUDGETARY ESTIMATE DIAGRAM

Test:U:120.1V I:0.1035A P:11.98W PF:0.9635 Lamp Flux:1012.29x1 lm		
NAME: 1RP69-1LED	TYPE:N/A	WEIGHT:N/A
SPEC.:N/A	DIM.: N/A	SERIAL No.:N/A
MFR.: Royal Pacific	SUR.:N/A	Shielding Angle:N/A

π cc	80%			70%			50%			30%			10%			0
π w	50%	30%	10%	50%	30%	10%	50%	30%	10%	50%	30%	10%	50%	30%	10%	0
π fc	20%			20%			20%			20%			20%			0
RCR	RCR: Room Cavity Ratio						Coefficients of Utilization (CU)									
0.0	1.19	1.19	1.19	1.16	1.16	1.16	1.11	1.11	1.11	1.06	1.06	1.06	1.02	1.02	1.02	.00
1.0	1.04	.00	.96	1.02	.98	.94	.97	.94	.91	.94	.91	.89	.90	.88	.86	.84
2.0	.91	.84	.78	.89	.83	.77	.85	.80	.75	.82	.78	.74	.79	.75	.72	.70
3.0	.80	.71	.65	.78	.70	.64	.75	.69	.63	.72	.67	.62	.70	.65	.61	.59
4.0	.71	.62	.55	.69	.61	.55	.67	.60	.54	.64	.58	.53	.62	.57	.52	.50
5.0	.63	.54	.47	.62	.53	.47	.60	.52	.47	.58	.51	.46	.56	.50	.46	.43
6.0	.57	.48	.41	.56	.47	.41	.54	.46	.41	.52	.46	.40	.51	.45	.40	.38
7.0	.52	.43	.37	.51	.42	.36	.49	.42	.36	.48	.41	.36	.46	.40	.36	.34
8.0	.47	.39	.33	.46	.38	.33	.45	.38	.32	.44	.37	.32	.43	.36	.32	.30
9.0	.43	.35	.29	.43	.35	.29	.41	.34	.29	.40	.34	.29	.39	.33	.29	.27
10.0	.40	.32	.27	.39	.32	.27	.38	.31	.26	.37	.31	.26	.36	.31	.26	.24



C Range: 0 - 360DEG
 C Interval: 22.5DEG
 Test Speed: HIGH
 Temperature:25.0DEG
 Operators:Carl
 Test Date:2023-04-07

γ Range: 0 - 180DEG
 γ Interval: 1.0DEG
 Test System: EVERFINE GO-R5000_V2 SYSTEM V2.0.351
 Humidity:42%
 Test Distance:2.532m [K=1.0000]
 Remarks:

WEC AND CCEC

Test:U:120.1V I:0.1035A P:11.98W PF:0.9635 Lamp Flux:1012.29x1 lm		
NAME: 1RP69-1LED	TYPE:N/A	WEIGHT:N/A
SPEC.:N/A	DIM.: N/A	SERIAL No.:N/A
MFR.: Royal Pacific	SUR.:N/A	Shielding Angle:N/A

π CC	80%			70%			50%			30%			10%			0
π W	50%	30%	10%	50%	30%	10%	50%	30%	10%	50%	30%	10%	50%	30%	10%	0
π fc	20%			20%			20%			20%			20%			0
RCR	RCR:Room Cavity Ratio						Wall Exitance Coefficients(WEC)									
0.0																
1.0	.306	.174	.055	.299	.170	.054	.285	.164	.052	.273	.158	.051	.262	.152	.049	
2.0	.289	.158	.049	.283	.156	.048	.271	.151	.047	.260	.146	.046	.250	.142	.045	
3.0	.268	.143	.043	.262	.141	.042	.252	.137	.042	.242	.133	.041	.233	.129	.040	
4.0	.247	.129	.038	.243	.127	.038	.233	.124	.037	.225	.121	.036	.217	.118	.036	
5.0	.229	.117	.034	.225	.115	.034	.216	.113	.033	.209	.110	.033	.202	.108	.032	
6.0	.212	.107	.030	.209	.105	.030	.201	.103	.030	.195	.101	.030	.188	.099	.029	
7.0	.198	.098	.028	.194	.097	.028	.188	.095	.027	.182	.093	.027	.176	.091	.027	
8.0	.185	.090	.025	.182	.089	.025	.176	.088	.025	.170	.086	.025	.165	.085	.025	
9.0	.173	.084	.023	.171	.083	.023	.165	.082	.023	.160	.080	.023	.156	.079	.023	
10.0	.163	.078	.022	.160	.078	.022	.156	.076	.021	.151	.075	.021	.147	.074	.021	

π CC	80%			70%			50%			30%			10%			0
π W	50%	30%	10%	50%	30%	10%	50%	30%	10%	50%	30%	10%	50%	30%	10%	0
π fc	20%			20%			20%			20%			20%			0
RCR	RCR:Room Cavity Ratio						Ceiling Cavity Exitance Coefficients(CCEC)									
0.0	.191	.191	.191	.164	.164	.164	.112	.112	.112	.064	.064	.064	.021	.021	.021	
1.0	.181	.157	.136	.155	.135	.117	.106	.093	.081	.061	.054	.047	.020	.017	.015	
2.0	.173	.133	.099	.148	.114	.086	.101	.079	.060	.058	.046	.035	.019	.015	.011	
3.0	.165	.115	.075	.141	.099	.065	.097	.069	.046	.056	.040	.027	.018	.013	.009	
4.0	.157	.102	.059	.135	.088	.052	.093	.061	.036	.054	.036	.022	.017	.012	.007	
5.0	.150	.091	.048	.129	.079	.042	.089	.055	.030	.051	.032	.018	.017	.011	.006	
6.0	.143	.083	.040	.123	.072	.035	.085	.050	.025	.049	.030	.015	.016	.010	.005	
7.0	.136	.076	.034	.117	.066	.030	.081	.046	.021	.047	.027	.013	.015	.009	.004	
8.0	.130	.070	.030	.111	.061	.026	.077	.043	.018	.045	.025	.011	.015	.008	.004	
9.0	.123	.065	.026	.106	.057	.023	.074	.040	.016	.043	.024	.010	.014	.008	.003	
10.0	.118	.061	.023	.102	.053	.020	.070	.037	.015	.041	.022	.009	.013	.007	.003	

C Range: 0 - 360DEG
 C Interval: 22.5DEG
 Test Speed: HIGH
 Temperature:25.0DEG
 Operators:Carl
 Test Date:2023-04-07

γ Range: 0 - 180DEG
 γ Interval: 1 .0DEG
 Test System: EVERFINE GO-R5000_V2 SYSTEM V2.0.351
 Humidity:42%
 Test Distance:2.532m [K=1.0000]
 Remarks:

UGR(Unified Glare Rating) Table

Test:U:120.1V I:0.1035A P:11.98W PF:0.9635 Lamp Flux:1012.29x1 lm										
NAME: 1RP69-1LED					TYPE:N/A			WEIGHT:N/A		
SPEC.:N/A					DIM.: N/A			SERIAL No.:N/A		
MFR.: Royal Pacific					SUR.:N/A			Shielding Angle:N/A		
ceiling/cavity	0.7	0.7	0.5	0.5	0.3	0.7	0.7	0.5	0.5	0.3
walls	0.5	0.3	0.5	0.3	0.3	0.5	0.3	0.5	0.3	0.3
working plane	0.2	0.2	0.2	0.2	0.2	0.2	0.2	0.2	0.2	0.2
Room dimensions	Viewed crosswise					Viewed endwise				
x = 2H y = 2H	22.9	24.4	23.1	24.6	24.8	22.9	24.4	23.2	24.6	24.8
3H	24.4	25.8	24.7	26.0	26.3	24.4	25.8	24.7	26.1	26.3
4H	25.0	26.3	25.3	26.6	26.8	25.0	26.4	25.4	26.6	26.9
6H	25.4	26.6	25.7	26.9	27.2	25.5	26.7	25.8	27.0	27.3
8H	25.5	26.7	25.8	27.0	27.3	25.6	26.8	25.9	27.1	27.4
12H	25.5	26.7	25.9	27.0	27.3	25.6	26.8	26.0	27.1	27.4
4H 2H	23.5	24.8	23.8	25.1	25.3	23.5	24.8	23.8	25.1	25.4
3H	25.2	26.3	25.5	26.6	26.9	25.2	26.4	25.6	26.7	27.0
4H	25.9	27.0	26.3	27.3	27.6	26.0	27.0	26.3	27.3	27.7
6H	26.4	27.4	26.8	27.7	28.1	26.5	27.4	26.9	27.8	28.2
8H	26.6	27.5	27.0	27.8	28.2	26.7	27.5	27.1	27.9	28.3
12H	26.7	27.5	27.1	27.9	28.3	26.8	27.6	27.2	27.9	28.4
8H 4H	26.2	27.0	26.6	27.4	27.8	26.2	27.1	26.6	27.5	27.8
6H	26.8	27.6	27.3	28.0	28.4	26.9	27.6	27.3	28.0	28.5
8H	27.1	27.7	27.5	28.1	28.6	27.1	27.8	27.6	28.2	28.7
12H	27.2	27.8	27.7	28.2	28.7	27.3	27.8	27.8	28.3	28.8
12H 4H	26.2	27.0	26.6	27.4	27.8	26.2	27.0	26.6	27.4	27.8
6H	26.9	27.5	27.3	27.9	28.4	26.9	27.6	27.4	28.0	28.5
8H	27.1	27.7	27.6	28.1	28.6	27.2	27.8	27.7	28.2	28.7
Variations with the observer position at spacings:										
S = 1.0H	+ 0.2 / - 0.2					+ 0.2 / - 0.2				
1.5H	+ 0.2 / - 0.3					+ 0.2 / - 0.3				
2.0H	+ 0.2 / - 0.3					+ 0.2 / - 0.3				

CIE Pub.117 Corrected 1012 lm Total Lamp Luminous Flux. (8log(F/F0) = 0.0)

C Range: 0 - 360DEG
 C Interval: 22.5DEG
 Test Speed: HIGH
 Temperature:25.0DEG
 Operators:Carl
 Test Date:2023-04-07

γ Range: 0 - 180DEG
 γ Interval: 1 .0DEG
 Test System: EVERFINE GO-R5000_V2 SYSTEM V2.0.351
 Humidity:42%
 Test Distance:2.532m [K=1.0000]
 Remarks:

UTILIZATION FACTORS TABLE

Test:U:120.1V I:0.1035A P:11.98W PF:0.9635 Lamp Flux:1012.29x1 lm		
NAME: 1RP69-1LED	TYPE:N/A	WEIGHT:N/A
SPEC.:N/A	DIM.: N/A	SERIAL No.:N/A
MFR.: Royal Pacific	SUR.:N/A	Shielding Angle:N/A

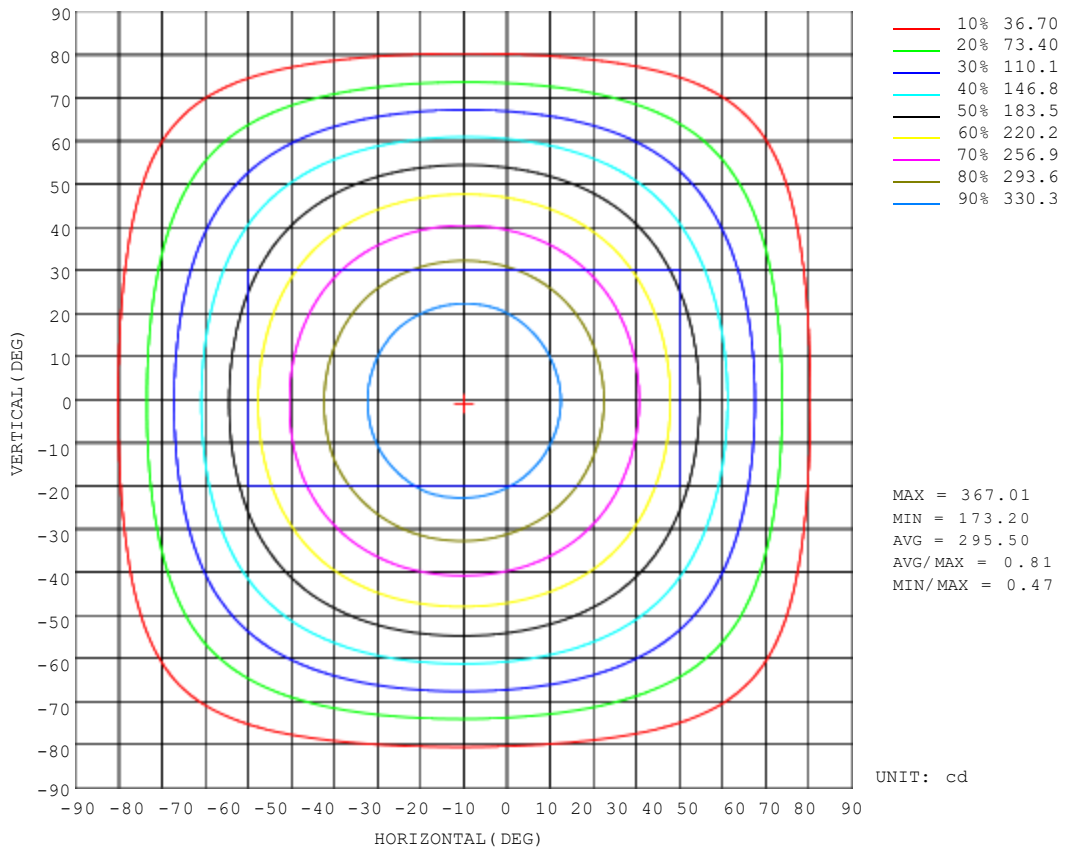
REFLECTANCE										
Ceiling	0.8	0.8	0.8	0.7	0.7	0.7	0.5	0.5	0.5	0
Walls	0.7	0.5	0.3	0.7	0.5	0.3	0.7	0.5	0.3	0
Working plane	0.2	0.2	0.2	0.2	0.2	0.2	0.2	0.2	0.2	0
ROOM INDEX	UTILIZATION FACTORS (PERCENT) $k(RI) \times RCR = 5$									
k = 0.60	58	46	39	57	46	39	56	46	39	33
0.80	68	56	49	67	56	49	65	55	49	42
1.00	76	65	58	75	65	58	73	66	57	50
1.25	83	73	66	82	72	65	79	71	65	57
1.50	88	79	72	87	78	71	84	76	70	63
2.00	95	87	80	93	86	80	90	83	78	70
2.50	99	91	85	97	90	84	93	87	83	74
3.00	102	96	90	100	94	89	96	91	87	78
4.00	106	101	96	104	99	95	100	96	92	83
5.00	109	104	100	106	102	98	102	98	95	86
ROOM INDEX	UF(total)									Direct
According to DIN EN 13032-2 2004			Suspended				SHRNOM = 1.25			

C Range: 0 - 360DEG
 C Interval: 22.5DEG
 Test Speed: HIGH
 Temperature:25.0DEG
 Operators:Carl
 Test Date:2023-04-07

γ Range: 0 - 180DEG
 γ Interval: 1 .0DEG
 Test System: EVERFINE GO-R5000_V2 SYSTEM V2.0.351
 Humidity:42%
 Test Distance:2.532m [K=1.0000]
 Remarks:

ISOCANDELA DIAGRAM

Test:U:120.1V I:0.1035A P:11.98W PF:0.9635 Lamp Flux:1012.29x1 lm		
NAME: 1RP69-1LED	TYPE:N/A	WEIGHT:N/A
SPEC.:N/A	DIM.: N/A	SERIAL No.:N/A
MFR.: Royal Pacific	SUR.:N/A	Shielding Angle:N/A

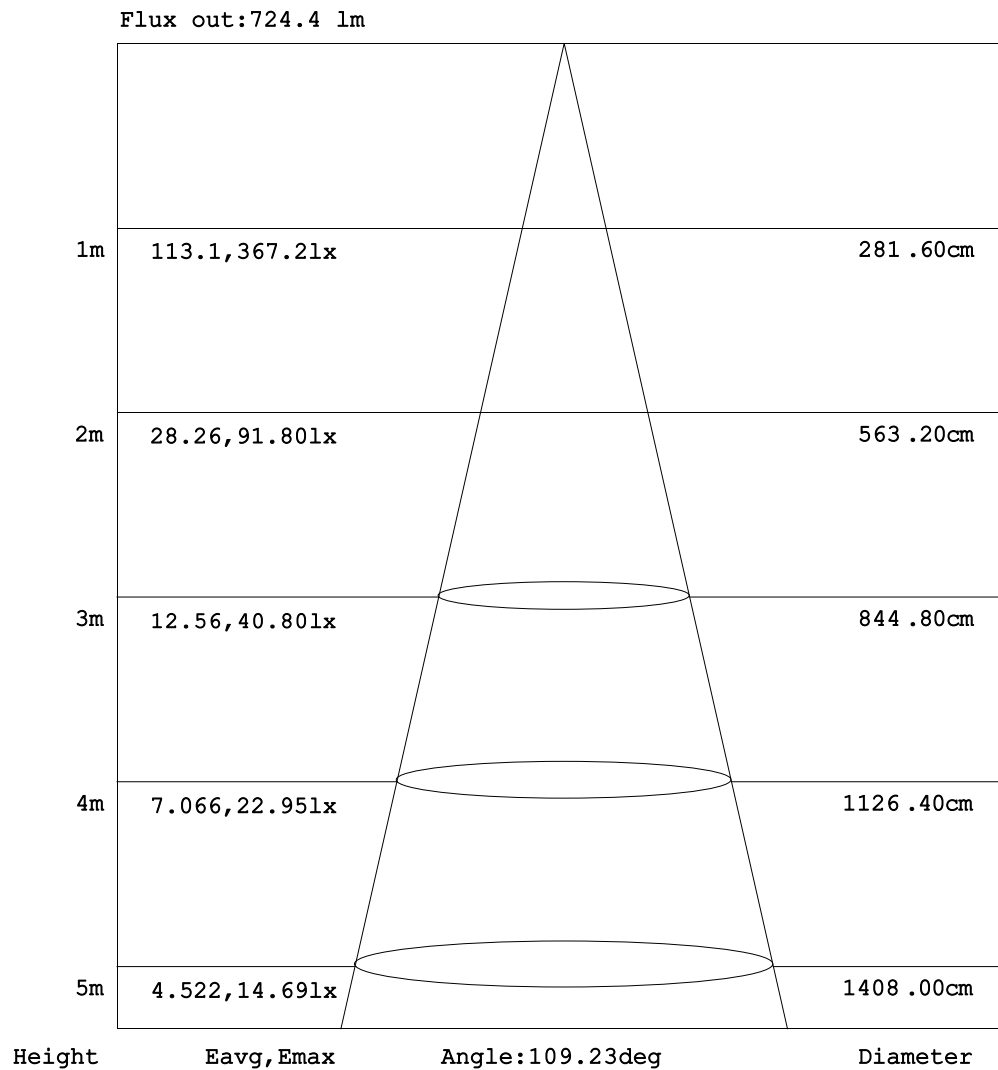


C Range: 0 - 360DEG
 C Interval: 22.5DEG
 Test Speed: HIGH
 Temperature:25.0DEG
 Operators:Carl
 Test Date:2023-04-07

γ Range: 0 - 180DEG
 γ Interval: 1.0DEG
 Test System: EVERFINE GO-R5000_V2 SYSTEM V2.0.351
 Humidity:42%
 Test Distance:2.532m [K=1.0000]
 Remarks:

AAI Figure

Test:U:120.1V I:0.1035A P:11.98W PF:0.9635 Lamp Flux:1012.29x1 lm		
NAME: 1RP69-1LED	TYPE:N/A	WEIGHT:N/A
SPEC.:N/A	DIM.: N/A	SERIAL No.:N/A
MFR.: Royal Pacific	SUR.:N/A	Shielding Angle:N/A



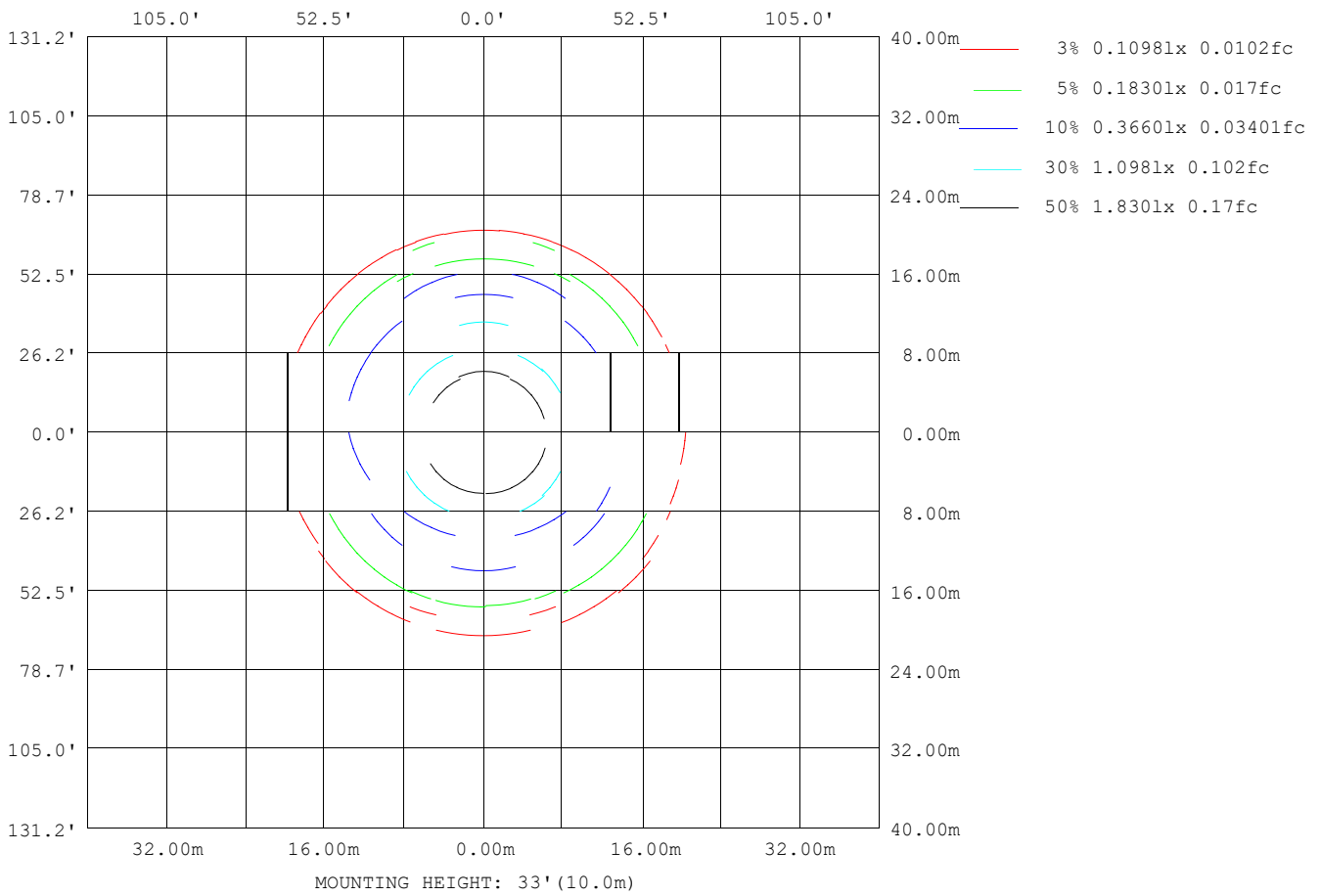
Note:The Curves indicate the illuminated area and the average illumination when the luminaire is at different distance.

C Range: 0 - 360DEG
 C Interval: 22.5DEG
 Test Speed: HIGH
 Temperature:25.0DEG
 Operators:Carl
 Test Date:2023-04-07

γ Range: 0 - 180DEG
 γ Interval: 1.0DEG
 Test System: EVERFINE GO-R5000_V2 SYSTEM V2.0.351
 Humidity:42%
 Test Distance:2.532m [K=1.0000]
 Remarks:

ISOLUX DIAGRAM

Test:U:120.1V I:0.1035A P:11.98W PF:0.9635 Lamp Flux:1012.29x1 lm		
NAME: 1RP69-1LED	TYPE:N/A	WEIGHT:N/A
SPEC.:N/A	DIM.: N/A	SERIAL No.:N/A
MFR.: Royal Pacific	SUR.:N/A	Shielding Angle:N/A



C Range: 0 - 360DEG
 C Interval: 22.5DEG
 Test Speed: HIGH
 Temperature:25.0DEG
 Operators:Carl
 Test Date:2023-04-07

Y Range: 0 - 180DEG
 Y Interval: 1 .0DEG
 Test System: EVERFINE GO-R5000_V2 SYSTEM V2.0.351
 Humidity:42%
 Test Distance:2.532m [K=1.0000]
 Remarks:

LED Avg.L Report

Test:U:120.1V I:0.1035A P:11.98W PF:0.9635 Lamp Flux:1012.29x1 lm		
NAME: 1RP69-1LED	TYPE:N/A	WEIGHT:N/A
SPEC.:N/A	DIM.: N/A	SERIAL No.:N/A
MFR.: Royal Pacific	SUR.:N/A	Shielding Angle:N/A

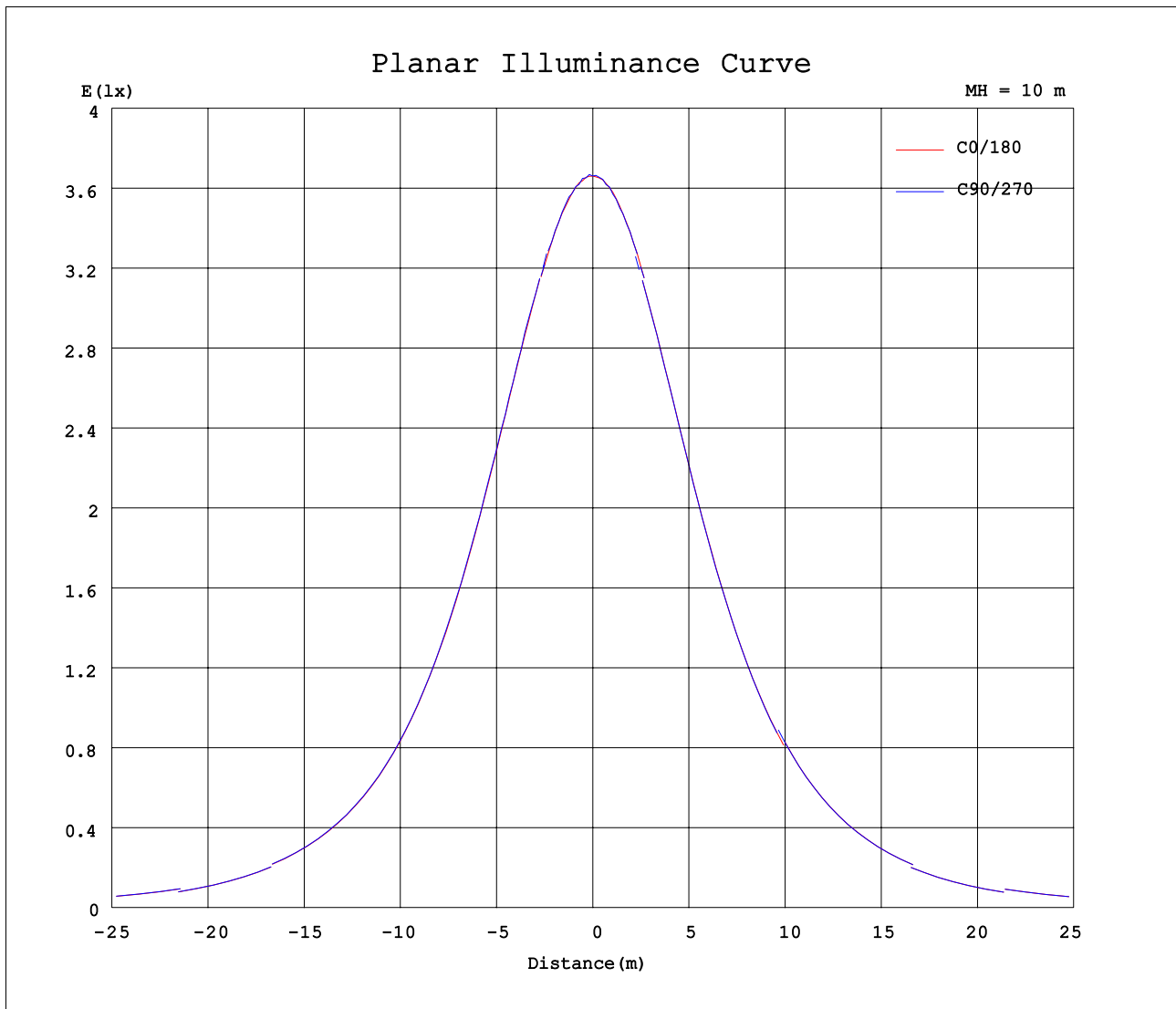
AvgL	cd/m2
L 0~180 (65) av	16586
L 0~180 (75) av	14428
L 0~180 (85) av	8780
L 90~270 (65) av	16632
L 90~270 (75) av	14620
L 90~270 (85) av	9072
L 45 (65) av	16590
L 45 (75) av	14514
L 45 (85) av	8935

Standard: GB/T 29293-2012

C Range: 0 - 360DEG
C Interval: 22.5DEG
Test Speed: HIGH
Temperature:25.0DEG
Operators:Carl
Test Date:2023-04-07

γ Range: 0 - 180DEG
γ Interval: 1 .0DEG
Test System: EVERFINE GO-R5000_V2 SYSTEM V2.0.351
Humidity:42%
Test Distance:2.532m [K=1.0000]
Remarks:

Planar Illuminance Curve



C Range: 0 - 360DEG
 C Interval: 22.5DEG
 Test Speed: HIGH
 Temperature:25.0DEG
 Operators:Carl
 Test Date:2023-04-07

γ Range: 0 - 180DEG
 γ Interval: 1 .0DEG
 Test System: EVERFINE GO-R5000_V2 SYSTEM V2.0.351
 Humidity:42%
 Test Distance:2.532m [K=1.0000]
 Remarks:

LUMINOUS DISTRIBUTION INTENSITY DATA

Test:U:120.1V I:0.1035A P:11.98W PF:0.9635 Lamp Flux:1012.29x1 lm		
NAME: 1RP69-1LED	TYPE:N/A	WEIGHT:N/A
SPEC.:N/A	DIM.: N/A	SERIAL No.:N/A
MFR.: Royal Pacific	SUR.:N/A	Shielding Angle:N/A

Table--1

UNIT: cd

C (DEG)	0	22.5	45	67.5	90	112.5	135	157.5	180	202.5	225	247.5	270	292.5	315	337.5			
0	366	366	366	366	366	366	366	366	366	366	366	366	366	366	366	366			
5	365	364	364	365	365	365	365	365	365	364	363	364	365	365	365	364			
10	359	359	358	359	359	359	360	360	359	358	358	359	359	359	359	359			
15	351	350	349	351	351	351	352	350	350	349	348	350	350	350	350	349			
20	338	338	337	338	338	338	338	339	338	337	336	337	337	337	337	338			
25	323	322	322	323	324	323	323	324	322	321	320	321	322	321	321	321			
30	304	304	304	304	305	304	305	305	303	302	302	302	303	303	303	303			
35	283	283	283	284	285	284	285	284	283	281	281	281	282	281	281	282			
40	260	260	260	261	261	261	261	261	259	259	258	258	259	259	259	260			
45	236	235	235	236	237	237	237	237	235	234	233	233	234	233	234	234			
50	209	209	209	210	210	210	211	210	208	207	206	207	208	208	208	208			
55	182	182	182	182	183	183	183	183	181	180	179	180	180	180	181	180			
60	154	153	153	154	154	155	155	154	152	152	151	152	152	152	153	152			
65	125	124	125	125	126	126	126	125	123	122	122	122	123	123	123	123			
70	96.0	95.5	95.8	96.5	97.1	97.6	97.4	96.8	93.9	93.4	93.1	93.7	94.2	94.4	94.6	94.1			
75	66.8	66.5	66.7	67.6	68.1	68.4	68.5	67.8	65.1	64.6	64.5	64.9	65.5	65.6	65.7	65.3			
80	38.8	38.7	38.9	39.5	40.1	40.3	40.2	39.7	37.6	37.1	37.2	37.7	38.1	38.2	38.1	37.8			
85	13.9	13.8	14.0	14.4	14.6	14.7	14.7	14.5	13.1	12.9	12.9	13.1	13.3	13.4	13.3	13.1			
90	0.06	0.06	0.06	0.06	0.06	0.06	0.06	0.06	0.02	0.02	0.02	0.02	0.02	0.02	0.02	0.02			
95	0.07	0.07	0.07	0.07	0.07	0.07	0.07	0.07	0.02	0.02	0.02	0.02	0.02	0.02	0.02	0.02			
100	0.08	0.08	0.08	0.08	0.08	0.08	0.08	0.08	0.03	0.03	0.03	0.03	0.03	0.04	0.03	0.03			
105	0.09	0.09	0.09	0.09	0.09	0.09	0.09	0.09	0.05	0.05	0.05	0.05	0.05	0.05	0.05	0.05			
110	0.11	0.11	0.11	0.11	0.11	0.11	0.11	0.11	0.06	0.06	0.06	0.06	0.07	0.07	0.07	0.06			
115	0.12	0.12	0.12	0.12	0.12	0.12	0.12	0.12	0.08	0.08	0.08	0.08	0.08	0.08	0.09	0.08			
120	0.15	0.15	0.15	0.15	0.15	0.15	0.15	0.15	0.11	0.11	0.11	0.11	0.11	0.11	0.11	0.11			
125	0.18	0.18	0.18	0.18	0.18	0.18	0.18	0.18	0.13	0.13	0.13	0.13	0.13	0.13	0.13	0.13			
130	0.22	0.22	0.22	0.22	0.22	0.22	0.22	0.22	0.15	0.15	0.15	0.15	0.15	0.15	0.15	0.15			
135	0.28	0.28	0.28	0.28	0.28	0.28	0.28	0.28	0.18	0.18	0.18	0.18	0.18	0.18	0.18	0.18			
140	0.36	0.36	0.36	0.36	0.36	0.36	0.36	0.36	0.20	0.20	0.20	0.20	0.20	0.20	0.20	0.20			
145	0.46	0.46	0.46	0.46	0.46	0.46	0.46	0.46	0.22	0.22	0.22	0.22	0.23	0.23	0.22	0.22			
150	0.55	0.55	0.55	0.55	0.55	0.54	0.55	0.55	0.24	0.25	0.25	0.25	0.25	0.25	0.25	0.25			
155	0.63	0.63	0.63	0.63	0.63	0.63	0.63	0.63	0.28	0.28	0.28	0.28	0.29	0.28	0.28	0.28			
160	0.69	0.69	0.69	0.69	0.69	0.69	0.69	0.69	0.32	0.32	0.32	0.32	0.32	0.32	0.32	0.32			
165	0.69	0.69	0.69	0.69	0.69	0.69	0.69	0.69	0.36	0.35	0.35	0.36	0.36	0.36	0.36	0.35			
170	0.66	0.66	0.66	0.66	0.66	0.66	0.65	0.66	0.39	0.39	0.39	0.39	0.39	0.39	0.39	0.39			
175	0.62	0.62	0.62	0.62	0.62	0.62	0.62	0.62	0.47	0.46	0.46	0.47	0.47	0.47	0.47	0.46			
180	0.55	0.55	0.54	0.55	0.55	0.55	0.55	0.55	0.55	0.55	0.55	0.55	0.55	0.55	0.55	0.55			

C Range: 0 - 360DEG
 C Interval: 22.5DEG
 Test Speed: HIGH
 Temperature:25.0DEG
 Operators:Carl
 Test Date:2023-04-07

γ Range: 0 - 180DEG
 γ Interval: 1 .0DEG
 Test System: EVERFINE GO-R5000_V2 SYSTEM V2.0.351
 Humidity:42%
 Test Distance:2.532m [K=1.0000]
 Remarks: